

Product datasheet for **RC220569**

Ribonuclease 3 (RNASE3) (NM_002935) Human Tagged ORF Clone

Product data:

Product Type:	Expression Plasmids
Product Name:	Ribonuclease 3 (RNASE3) (NM_002935) Human Tagged ORF Clone
Tag:	Myc-DDK
Symbol:	Ribonuclease 3
Synonyms:	ECP; RAF1; RNS3
Mammalian Cell Selection:	Neomycin
Vector:	pCMV6-Entry (PS100001)
E. coli Selection:	Kanamycin (25 ug/mL)
ORF Nucleotide Sequence:	>RC220569 ORF sequence Red=Cloning site Blue=ORF Green=Tags(s)

TTTTGTAATACGACTCACTATAGGGCGGCCGGAATTCGTCGACTGGATCCGGTACCGAGGAGATCTGCC
GCC**CGATCGCC**

ATGGTTCCAAAAGTTCACCTCCCAAATTTGTCTGCTTCTTCTGTTGGGGCTTATGGGTGTGGAGGGCT
CACTCCATGCCAGACCCACAGTTTACGAGGGCTCAGTGGTTTGCCATCCAGCACATCAGTCTGAACCC
CCCTCGATGCACCATTGCAATGCGGGCAATTAACAATTATCGATGGCGTTGCAAAAACAAAATACTTTT
CTTCGTACAACCTTTTCTAATGTAGTTAATGTTTGTGGTAACCAAAGTATACGCTGCCCTCATAACAGAA
CTCTCAACAATTGTCATCGGAGTAGATTCCGGTGCCTTTACTCCACTGTGACCTCATAAATCCAGGTGC
ACAGAATATTTCAAAGTGCAGGTATGCAGACAGACCAGGAAGGAGTTCTATGTAGTTGCATGTGACAAC
AGAGATCCACGGGATTCTCCACGGTATCCTGTGGTTCCAGTTCACCTGGATACCACCATC

ACGCGTACGCGGCCGCTCGAGCAGAACTCATCTCAGAAGAGGATCTGGCAGCAAATGATATCCTGGATT
ACAAGGATGACGACGATAAGGTTTAA

Protein Sequence:	>RC220569 protein sequence Red=Cloning site Green=Tags(s)
-------------------	--------------------------------------------------------------

MVPKLFTSQICLLLLLGLMGVEGSLHARPPQFTRAQWFAIQHISLNPPRCTIAMRAINNYRWRCKNQNTF
LRTTFANVVNVCGNQSIKCPHNRLLNCHRSRFRVPLLHCDLINPGAQNISNCRYADRPGRFFYVACDN
RDPDRSPRYPPVPHLDTTI

TRTRPLEQKLISEEDLAANDILDYKDDDDKV

Chromatograms:	https://cdn.origene.com/chromatograms/mk6451_e09.zip
----------------	-------------------------------------------------------------------------------------------------------------------------



[View online >](#)

Restriction Sites: SgfI-MluI

Cloning Scheme:



ACCN: NM_002935

ORF Size: 480 bp

OTI Disclaimer: The molecular sequence of this clone aligns with the gene accession number as a point of reference only. However, individual transcript sequences of the same gene can differ through naturally occurring variations (e.g. polymorphisms), each with its own valid existence. This clone is substantially in agreement with the reference, but a complete review of all prevailing variants is recommended prior to use. [More info](#)

OTI Annotation: This clone was engineered to express the complete ORF with an expression tag. Expression varies depending on the nature of the gene.

Components: The ORF clone is ion-exchange column purified and shipped in a 2D barcoded Matrix tube containing 10ug of transfection-ready, dried plasmid DNA (reconstitute with 100 ul of water).

Reconstitution Method:

1. Centrifuge at 5,000xg for 5min.
2. Carefully open the tube and add 100ul of sterile water to dissolve the DNA.
3. Close the tube and incubate for 10 minutes at room temperature.
4. Briefly vortex the tube and then do a quick spin (less than 5000xg) to concentrate the liquid at the bottom.
5. Store the suspended plasmid at -20°C. The DNA is stable for at least one year from date of shipping when stored at -20°C.

RefSeq: [NM_002935.1](#)

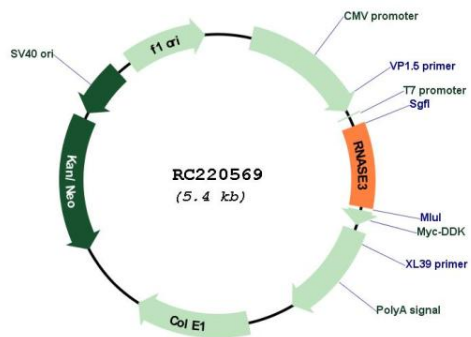
RefSeq Size: 716 bp

RefSeq ORF: 483 bp

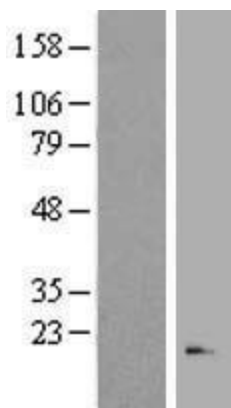
Locus ID: 6037

UniProt ID: [P12724](#)
Cytogenetics: 14q11.2
Domains: RNase_Pc
Protein Pathways: Asthma
MW: 18.4 kDa
Gene Summary: The protein encoded by this gene belongs to the pancreatic ribonuclease family, a subset of the ribonuclease A superfamily. The protein exhibits antimicrobial activity against pathogenic bacteria [provided by RefSeq, Oct 2014]

Product images:



Circular map for RC220569



Western blot validation of overexpression lysate (Cat# [LY419004]) using anti-DDK antibody (Cat# [TA50011-100]). Left: Cell lysates from untransfected HEK293T cells; Right: Cell lysates from HEK293T cells transfected with RC220569 using transfection reagent MegaTran 2.0 (Cat# [TT210002]).