

## Product datasheet for RC220559

### BARHL1 (NM\_020064) Human Tagged ORF Clone

#### Product data:

Product Type:	Expression Plasmids
Product Name:	BARHL1 (NM_020064) Human Tagged ORF Clone
Tag:	Myc-DDK
Symbol:	BARHL1
Mammalian Cell Selection:	Neomycin
Vector:	pCMV6-Entry (PS100001)
E. coli Selection:	Kanamycin (25 ug/mL)
ORF Nucleotide Sequence:	>RC220559 representing NM_020064 Red=Cloning site Blue=ORF Green=Tags(s)

TTTTGTAATACGACTCACTATAGGGCGGCCGGAATTCGTCGACTGGATCCGGTACCGAGGAGATCTGCCGCCCGATCGCC

ATGGAAGGCTCCAATGGCTTTGGGATCGACTCCATTCTCTCCACCGCGCGGGCAGCCCCGCCCTTCCCA  
AGGGGGACCCCTTGCTCGGGGACTGCCGTTGCCCCCTGGAGCTGAGTCCACGCTCAGAGAGCAGCAGCGA  
CTGCTCTTCGCCAGCCTCTCCAGGAAGGGACTGTTGGAGACGGGGACCCACGGCCTGGCGGGGCATCC  
GGCCCAGGTTTGGACTCCACCTGCAGCCCGGGCAGCTCTAGCCCCGGCCAGTCGCGCACCGTCACT  
CCTCCTTTCTGATCAGGGACATCCTTGCCGACTGCAAACCACTCGCGGCCTGTGCACCTACTCTAGCAG  
CGGGCAGCCGGCAGCCCCGAGCCTGAGCCTGGGGCCGCTTGCAGCCAAAGGCCGCGGAGGACTTTAGAGACAAG  
CTGGACAAAAGTGGCAGCAACGCCTCATCGGACTCTGAGTATAAAGTGAAGGAGGAGGGCAGCCGAGAG  
TCTCCAGCTCCAGGGACAGTCCCCCGGTGCGCCTGAAAAAGCCACGCAAGGCGCGCACGGCCTTACCCGA  
CCATCAGCTGGCGCAGCTGGAGCGCAGCTTCGAGCGGCAGAACTACCTGAGCGTGCAGGACCCGATGGAG  
CTCGCCGCTCGCTCAACCTCACCGACACGCAGGTCAAGACCTGGTACCAGAACCGCAGGACTAAATGGA  
AGCGACAGACGGCCGTCGGTTGGAGCTGCTGGCGGAGGCAGGCAATTACTCAGCGCTCCAGCGGATGTT  
CCCGTCGCCTTATTTCTACCCGAGAGTCTGGTTTCCAACCTGGACCCCGCGCGGGCCTCTACCTGTAC  
CGCGGCCCCAGCGCGCCCGCCTGCTCTCCAGAGACCTCTGGTGCCCCGCATCCTCATCCAGGACTCC  
AGGGCGCCAGCGAGCCGCCCGCGCTGCCCCCTGGCGGGCTCCTCCACGCGCCGCGCAGCCTCG  
G

ACGCGTACGCGGCCGCTCGAGCAGAACTCATCTCAGAAGAGGATCTGGCAGCAAATGATATCCTGGATT  
ACAAGGATGACGACGATAAGGTTTAA



[View online »](#)

**Protein Sequence:** >RC220559 representing NM\_020064  
Red=Cloning site Green=Tags(s)

MEGSNGFGIDSILSHRAGSPALPKGDPLLGDRCSPLELSPRSESSSDCSSPASPGRDCLGTGTPRPGGAS  
 GPGLDHLQPGQLSAPAQSRTVTSSFLIRDILADCKPLAACAPYSSSQPAAPEPGGRLAAKAAEDFRDK  
 LDKSGSNASSDSEYKVKKEEGDREISSSRDPPVRLKKPRKARTAFDTHQLAQLERSFERQKYL SVQDRME  
 LAASLNL TDTQVKTWYQNRRTKWKRQTAVGLELLAEAGNYSALQRMFPPSPYFYPQSLVSNLDPGAALYLY  
 RGPSAPPPALQRPLVPRILIHGLQGASEPPPLPPLAGVLPRAAQPR

TRTRPLEQKLISEEDLAANDILDYKDDDDKV

**Chromatograms:** [https://cdn.origene.com/chromatograms/mk8041\\_h10.zip](https://cdn.origene.com/chromatograms/mk8041_h10.zip)

**Restriction Sites:** Sgfl-MluI

**Cloning Scheme:**

Cloning sites used for ORF Shuttling:



\* The last codon before the Stop codon of the ORF

**ACCN:** NM\_020064

**ORF Size:** 981 bp

**OTI Disclaimer:** The molecular sequence of this clone aligns with the gene accession number as a point of reference only. However, individual transcript sequences of the same gene can differ through naturally occurring variations (e.g. polymorphisms), each with its own valid existence. This clone is substantially in agreement with the reference, but a complete review of all prevailing variants is recommended prior to use. [More info](#)

**OTI Annotation:** This clone was engineered to express the complete ORF with an expression tag. Expression varies depending on the nature of the gene.

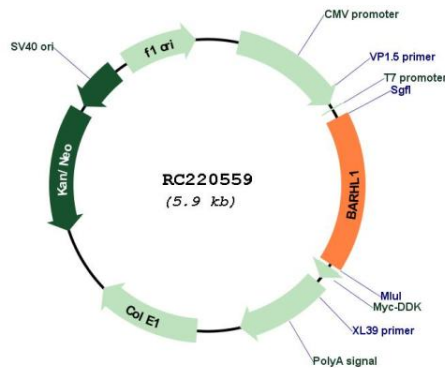
**Components:** The ORF clone is ion-exchange column purified and shipped in a 2D barcoded Matrix tube containing 10ug of transfection-ready, dried plasmid DNA (reconstitute with 100 ul of water).

**Reconstitution Method:**

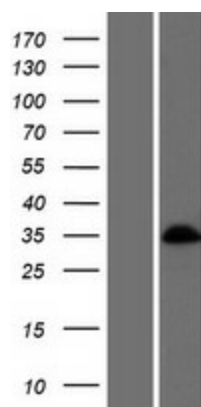
1. Centrifuge at 5,000xg for 5min.
2. Carefully open the tube and add 100ul of sterile water to dissolve the DNA.
3. Close the tube and incubate for 10 minutes at room temperature.
4. Briefly vortex the tube and then do a quick spin (less than 5000xg) to concentrate the liquid at the bottom.
5. Store the suspended plasmid at -20°C. The DNA is stable for at least one year from date of shipping when stored at -20°C.

**RefSeq:** [NM\\_020064.4](#)  
**RefSeq Size:** 1907 bp  
**RefSeq ORF:** 984 bp  
**Locus ID:** 56751  
**UniProt ID:** [Q9BZE3](#)  
**Cytogenetics:** 9q34.13  
**Protein Families:** Transcription Factors  
**MW:** 34.9 kDa

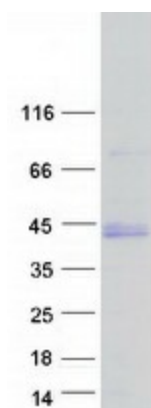
**Product images:**



Circular map for RC220559



Western blot validation of overexpression lysate (Cat# [LY412653]) using anti-DDK antibody (Cat# [TA50011-100]). Left: Cell lysates from untransfected HEK293T cells; Right: Cell lysates from HEK293T cells transfected with RC220559 using transfection reagent MegaTran 2.0 (Cat# [TT210002]).



Coomassie blue staining of purified BARHL1 protein (Cat# [TP320559]). The protein was produced from HEK293T cells transfected with BARHL1 cDNA clone (Cat# RC220559) using MegaTran 2.0 (Cat# [TT210002]).