

Product datasheet for **RC220558**

Mineralocorticoid Receptor (NR3C2) (NM_000901) Human Tagged ORF Clone

Product data:

Product Type:	Expression Plasmids
Product Name:	Mineralocorticoid Receptor (NR3C2) (NM_000901) Human Tagged ORF Clone
Tag:	Myc-DDK
Symbol:	NR3C2
Synonyms:	MCR; MLR; MR; NR3C2VIT
Vector:	pCMV6-Entry (PS100001)
E. coli Selection:	Kanamycin (25 ug/mL)
Cell Selection:	Neomycin
ORF Nucleotide Sequence:	>RC220558 representing NM_000901 Red=Cloning site Blue=ORF Green=Tags(s)

TTTTGTAATACGACTCACTATAGGGCGCCGGAATTCGTCGACTGGATCCGGTACCGAGGAGATCTGCC
GCC**CGATCGCC**

ATGGAGACCAAAGGCTACCACAGTCTCCCTGAAGGTCTAGATATGGAAAGACGGTGGGGTCAAGTTTCTC
AGGCTGTGGAGCGTTCTCCCTGGGACCTACAGAGAGGACCGATGAGAATAACTACATGGAGATTGTCAA
CGTAAGCTGTGTTCCGGTGTCTATTCCAACAACAGTACTCAAGGAAGCAGCAAAGAAAAACAAGAACTA
CTCCCTTGCCCTTACGCAAGACAATAATCGGCCTGGGATTTAACATCTGATATTAAGAACTGAGCTGGAA
CTAAGGAACCTTTCAGCAACTGTAGCTGAGTCCATGGGTTTATATATGGATTCTGTAAGAGATGCTGACTA
TTCTATGAGCAGCAGAACCAACAAGGAAGCATGAGTCCAGCTAAGATTTATCAGAATGTTGAACAGCTG
GTGAAATTTTACAAGGAAATGGCCATCGTCTCCACTTAAGTTGTGTGAACACGCCCTTGAGATCAT
TTATGTCTGACTCTGGGAGCTCCGTGAATGGTGGCGTCATGCGCGCCGTGTTAAAAGCCCTATCATGTG
TCATGAGAAAAGCCCGTCTGTTGCAGCCCTCTGAACATGACATCTTCGGTTTGCAGCCCTGCTGGAATC
AACTCTGTGTCTCCACCACAGCCAGCTTGGCAGTTTTCCAGTGCACAGCCCAATCACCCAGGGAACCTC
CTCTGACATGCTCCCCTAATGTTGAAAAATCGAGGCTCCAGTGCACAGCCCTGCACATGCTAGCAAATGT
GGGCTCTCTCTCAAGTCCGTTAAGTAGCATGAAATCCTCAATTTCCAGCCCTCCAAGTCACTGCAGT
GTAAAAATCTCCAGTCTCCAGTCCCAATAATGCTACTCTGAGATCCTCTGTGTCTAGCCCTGCAAATATTA
ACAACCTCAAGGTGCTCTGTTCCAGCCCTTCGAACACTAATAACAGATCCACGCTTTCCAGTCCGGCAGC
CAGTACTGTGGGATCTATCTGTAGCCCTGTAAACAATGCCTTCAGCTACACTGCTTCTGGCACCTCTGCT
GGATCCAGTACATTGCGGGATGTGGTCCCAGTCCAGACACGCAGGAGAAAGGTGCTCAAGAGGTCCCTT
TTCCTAAGACTGAGGAAGTAGAGAGTGCCATCTCAAATGGTGTGACTGGCCAGCTTAATATTGTCCAGTA
CATAAAACCAGAACCAGATGGAGCTTTTAGCAGCTCATGTCTAGGAGGAAATAGCAAAATAAATTCGGAT
TCTTCATTCTCAGTACCAATAAAGCAAGAATCAACCAAGCATTATGTTCCAGGCACCTCTTTTAAAGGGA
ATCCAACAGTAAACCCGTTTCCATTTATGGATGGCTCGTATTTTCCCTTATGGATGATAAAGACTATTA
TTCCCTATCAGGAATTTTAGGACCACCTGTGCCCGGCTTTGATGGTAACTGTGAAGGCAGCGGATCCCA
GTGGGTATTAACAAGAACCAGATGATGGGAGCTATTACCAGAGGCCAGCATCCCTTCTCTGCTATTG



[View online »](#)

TTGGGGTGAATTCAGGTGGACAGTCCTTCCACTACAGGATTGGTGCTCAAGGTACAATATCTTTATCACG
 ATCGGCTAGAGACCAATCTTTCCAACACCTGAGTTCCTTTCTCTGTCAATACTTTAGTGGAGTCATGG
 AAATCACACGGCGACCTGTCGTCTAGAAGAAGTATGGGTATCCGGTCTTAGAATACATTCCAGAAAATG
 TATCAAGCTCTACTTTACGAAGTGTCTACTGGATCTTCAAGACCTTCAAAAATATGTTTGGTGTGTGG
 GGATGAGGCTTCAGGATGCCATTATGGGGTAGTCACCTGTGGCAGCTGCAAAGTTTTCTTCAAAGAGCA
 ATTGGAAGGGCAACACAACATTTTATGTGCTGGAAGAAATGATTGCATCATTGATAAAGATTCGACGAAAGA
 ATTTGCTGCTTGCAGACTTCAGAAATGTCTTCAAGCTGGAATGAATTTAGGAGCACGAAAGTCAAAGAA
 GTTGGGAAAGTTAAAAGGGATTACAGAGGAGCAGCCACAGCAGCAGCAGCCCCACCCACCCACCCACCC
 CCGCAAAGCCAGAGGAAGGGACAACTACATCGCTCCTGCAAAAAGAACCTCGGTCAACACAGCACTGG
 TTCCTCAGCTCTCCACAATCTCACGAGCGCTCACACCTTCCCCGTTATGGTCTTGAAAACATTGAACC
 TGAAATTTGATATGCAGGCTATGACAGCTCAAACCCAGATACAGCCGAAAATCTGCTCTCCAGCTCAAC
 CGCTTAGCAGGCAAACAGATGATCCAAGTCGTGAAGTGGGCAAAGGTAATCCAGGATTTAAAACCTTGC
 CTCTTGAGGACCAAATACCTAATCCAGTATTCTTGGATGTGTCTATCATCATTGCTTGGCTGAGCTGGAG
 ATCGTACAAAACATACGAACAGCCAAATTTCTCTATTTTGCACCAGACCTAGTCTTTAATGAAGAGAAGATG
 CATCAGTCTGCCATGTATGAACTATGCCAGGGATGCACCAAATCAGCCTCAGTTCGTTGACTGCAGC
 TCACCTTTGAAGAATACACCATCATGAAAGTTTTGCTGCTACTAAGCACAAATCCAAAGGATGGCCTCAA
 AAGCCAGGCTGCATTTGAAGAAATGAGGACAAATTACATCAAAGAACTGAGGAAGATGGTAACTAAGTGT
 CCCAACAAATCTGGGCGAGCTGGCAGAGGTTCTACCACTGACCAAGCTGCTGGACTCCATGCATGACC
 TGGTGAGCGACCTGCTGGAATTCGCTTACACCTTCCGAGAGTCCCATGCGCTGAAGGTAGAGTTCCC
 CGCAATGCTGGTGGAGATCATCAGCGACCAGCTGCCAAAGGTGGAGTGGGGGACGCCAAGCCGCTCTAC
 TTCCACCGGAAG

ACGCGTACGCGGCCGCTCGAGCAGAACTCATCTCAGAAGAGGATCTGGCAGCAAATGATATCCTGGATT
 ACAAGGATGACGACGATAAGGTTTAA

Protein Sequence:

>RC220558 representing NM_000901
 Red=Cloning site Green=Tags(s)

METKGYHSLPEGLDMERRWGQVSQAVERSLGPTEERTDENNYMEIVNVSCVSGAIPNNSQTQSSKEKQEL
 LPCLQDNNRPGILTSDIKTELESKELSATVAESMGLYMDSVRDADYSYEQNQQGSMSPAKIYQNVEQL
 VKFYKGNHRPSTLSCVNTPLRSFMSDSGSSVNGGVMRAVVKSPIMCHEKSPSVCPLNMTSSVCSFAGI
 NSVSSTTASFSGFPVHSPITQGTPLTCSNVENRGRSHSPAHASNVGSPLSSPLSSMKSSISSPSSHCS
 VKSPVSSPNNVTLRSSVSSPANINNSRCSVSSPSNTNRRSTLSSPAASTVGSICSPVNNAFSYTASGTS
 GSSTLRDVPSPDTQEKGAQEVFPKTEEVESAISNGVTGQLNIVQYIKPEPDGAFSSSCLGGNSKINSD
 SSFVSPVPIKQESTKHSCSGTSFKGNPTVNPFFMDGSYFSFMDKDYSLSGILGPPVPGFDGNCESGFP
 VGIKQEPDDGSYYPEASIPSSAIVGVNSGGQSFHYRIGAQGTISLSRSARDQSFQHLSSFPVNTLVESW
 KSHGDLSSRRSDGYVLEYIPENVSSSTLRVSTGSSRPSKICLVCGDEASGCHYGVVTCGSCVKVFKRA
 VEGQHNYLCAGRNDICIIDKIRRNCPACRLQKCLQAGMNLGARKSKKLGKLGKIHQEQPQQQPPPPPPP
 PQSPEEGTTYIAPAKEPSVNTALVPQLSTISRALTPSPVMLENIEPEIVYAGYDSSKPDATENLLSTLN
 RLAGKQMIQVVKWAKVLPGFKNLPLEDQITLIQYSWMCLSSFALSWRSYKHTNSQFLYFAPDLVFNEEKM
 HQSAMYELCQGMHQISLQFVRLQLTFEEYTIMKVLVLLSTIPKDGKLSQAAFEEMRTNYIKELRKMVTKC
 PNNSGQSWQRFYQLTKLLDSMHDLVSDLLEFCYTFRESHALKVEFPAMLVEIISDQLPKVESGNAKPLY
 FHRK

TRTRPLEQKLISEEDLAANDILDYKDDDDKV

Chromatograms:

https://cdn.origene.com/chromatograms/mk6715_b03.zip

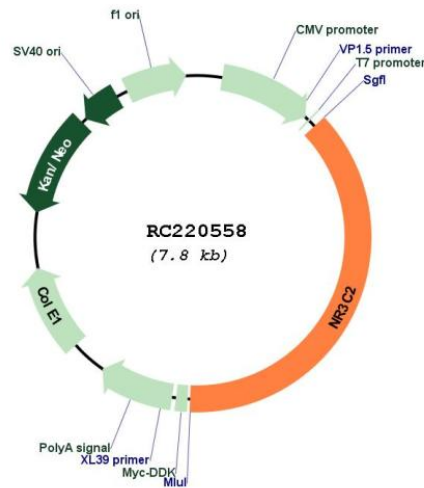
Restriction Sites:

Sgfl-Mlul

Cloning Scheme:



Plasmid Map:



ACCN: NM_000901

ORF Size: 2952 bp

OTI Disclaimer: Due to the inherent nature of this plasmid, standard methods to replicate additional amounts of DNA in E. coli are highly likely to result in mutations and/or rearrangements. Therefore, OriGene does not guarantee the capability to replicate this plasmid DNA. Additional amounts of DNA can be purchased from OriGene with batch-specific, full-sequence verification at a reduced cost. Please contact our customer care team at custsupport@origene.com or by calling 301.340.3188 option 3 for pricing and delivery.

The molecular sequence of this clone aligns with the gene accession number as a point of reference only. However, individual transcript sequences of the same gene can differ through naturally occurring variations (e.g. polymorphisms), each with its own valid existence. This clone is substantially in agreement with the reference, but a complete review of all prevailing variants is recommended prior to use. [More info](#)

OTI Annotation: This clone was engineered to express the complete ORF with an expression tag. Expression varies depending on the nature of the gene.

Components: The ORF clone is ion-exchange column purified and shipped in a 2D barcoded Matrix tube containing 10ug of transfection-ready, dried plasmid DNA (reconstitute with 100 ul of water).

Reconstitution Method:

1. Centrifuge at 5,000xg for 5min.
2. Carefully open the tube and add 100ul of sterile water to dissolve the DNA.
3. Close the tube and incubate for 10 minutes at room temperature.
4. Briefly vortex the tube and then do a quick spin (less than 5000xg) to concentrate the liquid at the bottom.
5. Store the suspended plasmid at -20°C. The DNA is stable for at least one year from date of shipping when stored at -20°C.

RefSeq: [NM_000901.5](#)

RefSeq Size: 5749 bp

RefSeq ORF: 2955 bp

Locus ID: 4306

UniProt ID: [P08235](#)

Cytogenetics: 4q31.23

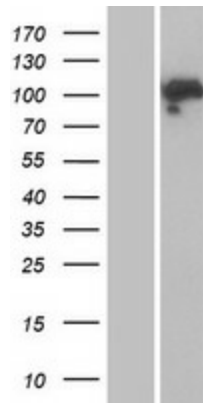
Domains: HOLI, zf-C4

Protein Families: Druggable Genome, Nuclear Hormone Receptor, Transcription Factors

MW: 106.9 kDa

Gene Summary:

This gene encodes the mineralocorticoid receptor, which mediates aldosterone actions on salt and water balance within restricted target cells. The protein functions as a ligand-dependent transcription factor that binds to mineralocorticoid response elements in order to transactivate target genes. Mutations in this gene cause autosomal dominant pseudohypoaldosteronism type I, a disorder characterized by urinary salt wasting. Defects in this gene are also associated with early onset hypertension with severe exacerbation in pregnancy. Alternative splicing results in multiple transcript variants. [provided by RefSeq, Oct 2009]

Product images:

Western blot validation of overexpression lysate (Cat# [LY424465]) using anti-DDK antibody (Cat# [TA50011-100]). Left: Cell lysates from untransfected HEK293T cells; Right: Cell lysates from HEK293T cells transfected with RC220558 using transfection reagent MegaTran 2.0 (Cat# [TT210002]).