

Product datasheet for **RC220553**

TMPRSS11E (NM_014058) Human Tagged ORF Clone

Product data:

Product Type:	Expression Plasmids
Product Name:	TMPRSS11E (NM_014058) Human Tagged ORF Clone
Tag:	Myc-DDK
Symbol:	TMPRSS11E
Synonyms:	DESC1; TMPRSS11E2
Mammalian Cell Selection:	Neomycin
Vector:	pCMV6-Entry (PS100001)
E. coli Selection:	Kanamycin (25 ug/mL)



[View online »](#)

ORF Nucleotide Sequence:

>RC220553 representing NM_014058
 Red=Cloning site Blue=ORF Green=Tags(s)

TTTTGTAATACGACTCACTATAGGGCGGCCGGAATTCGTCGACTGGATCCGGTACCGAGGAGATCTGCC
 GCC**CGGATCGCC**

ATGATGTATCGGCCAGATGTGGTGAGGGCTAGGAAAAGAGTTTGTGGGAACCTGGGTTATCGGCCTCG
 TCATCTTCATATCCCTGATTGCTCTGGCAGTGTGCATTGGACTCACTGTTCAATTATGTGAGATATAATCA
 AAAGAAGACCTACAATTACTATAGCACATTGTCATTTACAACGACAACTATATGCTGAGTTTGGCAGA
 GAGGCTTCTAACAATTTACAGAAATGAGCCAGAGACTTGAATCAATGGTGAAAAATGCATTTTATAAAT
 CTCCATTAAGGGAAGAATTTGTCAAGTCTCAGGTTATCAAGTTCAGTCAACAGAAGCATGGAGTGTGGC
 TCATATGCTGTTGATTTGTAGATTTCACTCTACTGAGGATCCTGAACTGTAGATAAAATTTGTTCAACT
 GTTTTACATGAAAAGCTGCAAGATGCTGTAGGACCCCTAAAGTAGATCCTCACTCAGTAAAATTTAAAA
 AAATCAACAAGACAGAAACAGACAGCTATCTAAACCATTGCTGCGGAACACGAAGAAGTAAAACCTAGG
 TCAGAGTCTCAGGATCGTTGGTGGGACAGAAGTAGAAGAGGGTGAATGGCCCTGCGAGGCTAGCCTGCAG
 TGGGATGGGAGTCATCGCTGTGGAGCAACCTTAATTAATGCCACATGGCTTGTGAGTGTCTCACTGTT
 TTACAACATATAAGAACCCTGCCAGATGGACTGCTTCCCTTTGGAGTAACAATAAAACCTTCGAAAATGAA
 ACGGGGTCTCCGGAGAATAATTGTCATGAAAAATACAAACACCCATCACATGACTATGATATTTCTCTT
 GCAGAGCTTTCTAGCCCTGTTCCCTACACAAATGCAGTACATAGAGTTTGTCTCCCTGATGCATCCTATG
 AGTTTCAACCAGGTGATGTGATGTTTGTGACAGGATTTGGAGCACTGAAAAATGATGGTTACAGTCAAAA
 TCATCTTCGACAAGCACAGGTGACTCTCATAGACGCTACAACCTTGAATGAACCTCAAGCTTACAATGAC
 GCCATAACTCCTAGAATGTTATGTGCTGGCTCCTTAGAAGGAAAAACAGATGCATGCCAGGGTACTCTG
 GAGGACCACTGGTTAGTTCAGATGCTAGAGATATCTGGTACCTTGTCTGGAATAGTGAGCTGGGAGATGA
 ATGTGCGAAACCCAACAAGCCTGGTGTATACTAGAGTTACGGCCTTGGGGACTGGATTACTTCAAAA
 ACTGGTATC

ACGCGTACGCGGCCGCTCGAGCAGAACTCATCTCAGAAGAGGATCTGGCAGCAATGATATCCTGGATT
 ACAAGGATGACGACGATAAGGTTTAA

Protein Sequence:

>RC220553 representing NM_014058
 Red=Cloning site Green=Tags(s)

MMYRPDVVRARKRVCWEPWVIGLVIFISLIVLAVCIGLTVHYVRYNQKKTYYNYSTLSFTTDKLYAEFGR
 EASNNFTEMSQRLESMVKNAFYKSPLREEFVKSQVIKFSQKQKHGVLAHMLLICRFHSTEDPETVDKIVQL
 VLHEKLQDAVGPPKVDPHSVKIKKINKTETDSYLNHCCGTRRSKTLGQSLRIVGGTEVEEGEWPWQASLQ
 WDGSHRCGATLINATWLVSAAHCFTTYKNPARWTASFGVTIKPSKMKRGLRRIIVHEKYKHPSHDYDISL
 AELSSPVPYTNVHRVCLPDASYEFQPGDVMFVTGFGALKNDGYSQNHRLRQAQVTLIDATTCNEPQAYND
 AITPRMLCAGSLEKGTDACQGDSSGGLVSSDARDIWYLAGIVSWGDECAKPNKPGVYTRVTALRDWITSK
 TGI

TRTRPLEQKLISEEDLAANDILDYKDDDDKV

Chromatograms:

https://cdn.origene.com/chromatograms/mg3868_d01.zip

Restriction Sites:

Sgfl-Mlul

Cloning Scheme:


ACCN: NM_014058

ORF Size: 1269 bp

OTI Disclaimer: The molecular sequence of this clone aligns with the gene accession number as a point of reference only. However, individual transcript sequences of the same gene can differ through naturally occurring variations (e.g. polymorphisms), each with its own valid existence. This clone is substantially in agreement with the reference, but a complete review of all prevailing variants is recommended prior to use. [More info](#)

OTI Annotation: This clone was engineered to express the complete ORF with an expression tag. Expression varies depending on the nature of the gene.

Components: The ORF clone is ion-exchange column purified and shipped in a 2D barcoded Matrix tube containing 10ug of transfection-ready, dried plasmid DNA (reconstitute with 100 ul of water).

- Reconstitution Method:**
1. Centrifuge at 5,000xg for 5min.
 2. Carefully open the tube and add 100ul of sterile water to dissolve the DNA.
 3. Close the tube and incubate for 10 minutes at room temperature.
 4. Briefly vortex the tube and then do a quick spin (less than 5000xg) to concentrate the liquid at the bottom.
 5. Store the suspended plasmid at -20°C. The DNA is stable for at least one year from date of shipping when stored at -20°C.

Note: Plasmids are not sterile. For experiments where strict sterility is required, filtration with 0.22um filter is required.

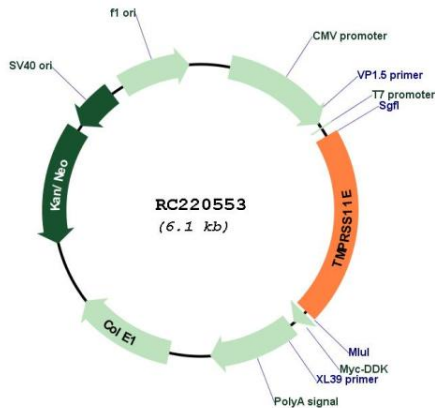
RefSeq: [NM_014058.4](#)

RefSeq Size: 2103 bp

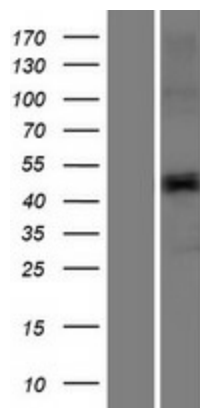
RefSeq ORF: 1272 bp

Locus ID: 28983

UniProt ID: [Q9UL52](#)
Cytogenetics: 4q13.2
Protein Families: Druggable Genome, Protease, Secreted Protein, Transmembrane
MW: 47.5 kDa
Gene Summary: Serine protease which possesses both gelatinolytic and caseinolytic activities. Shows a preference for Arg in the P1 position.[UniProtKB/Swiss-Prot Function]

Product images:


Circular map for RC220553



Western blot validation of overexpression lysate (Cat# [LY415501]) using anti-DDK antibody (Cat# [TA50011-100]). Left: Cell lysates from untransfected HEK293T cells; Right: Cell lysates from HEK293T cells transfected with RC220553 using transfection reagent MegaTran 2.0 (Cat# [TT210002]).