

Product datasheet for RC220551

Renalase (RNLS) (NM_018363) Human Tagged ORF Clone

Product data:

Product Type:	Expression Plasmids
Product Name:	Renalase (RNLS) (NM_018363) Human Tagged ORF Clone
Tag:	Myc-DDK
Symbol:	Renalase
Synonyms:	C10orf59; RENALASE
Mammalian Cell Selection:	Neomycin
Vector:	pCMV6-Entry (PS100001)
E. coli Selection:	Kanamycin (25 ug/mL)
ORF Nucleotide Sequence:	>RC220551 representing NM_018363 Red=Cloning site Blue=ORF Green=Tags(s)

TTTTGTAATACGACTCACTATAGGGCGCCGGGAATTCGTCGACTGGATCCGGTACCGAGGAGATCTGCC
GCC**CGATCGCC**

ATGGCGCAGGTGCTGATCGTGGGCGCCGGGATGACAGGAAGCTTGTGCGCTGCGCTGCTGAGGAGGCAGA
CGTCCGGTCCCTTGACCTTGCTGTGTGGGACAAGGCTGAGGACTCAGGGGAAGAATGACTACAGCCTG
CAGTCCTCATAATCCTCAGTGCACAGCTGACTTGGGTGCTCAGTACATCACCTGCACTCCTCATTATGCC
AAAAACACCAACGTTTTATGATGAACTGTTAGCCTATGGCGTTTTGAGGCCTAAGCTCGCCTATTG
AAGGAATGGTGTGAAAGAAGGAGACTGTAACCTTGTGGCACCTCAAGGAATTTCTCAATTATTAAGCA
TTACTTGAAAGAATCAGGTGCAGAAGTCTACTTCAGACATCGTGTGACACAGATCAACCTAAGAGATGAC
AAATGGGAAGTATCCAAACAAACAGGCTCCCCTGAGCAGTTTGATCTTATTGTTCTCACAATGCCAGTTC
CTGAGATTCTGCAGCTTCAAGGTGACATCACCACTTAATTAGTGAATGCCAAAGGCAGCAACTGGAGGC
TGTGAGCTACTCCTCTCGATATGCTCTGGGCTCTTTATGAAGCTGGTACGAAGATTGATGTCCCTTGG
GCTGGGCAGTACATCACCAAGTAACTCCCTGCATACGCTTCGCTCCATTGATAATAAGAAGCGCAATATAG
AGTCATCAGAAATGGGCCTTCCCTCGTGATTCACACCACTGTCCATTTGGAGTTACATACTTGGAAACA
CAGCATTGAGGATGTGCAAGAGTTAGTCTTCCAGCAGCTGGAAAACATTTGCCGGTTTTGCCTCAGCCA
ATTGCTACCAAATGCCAAAATGGAGACATTCACAGGTACCAAGTCTGGTGTGATTCTAGGATGTGCCA
AGAGCCCTGGATGATGGCGATTGGATTCCCATC

ACGCGTACGCGGCCGCTCGAGCAGAAACTCATCTCAGAAGAGGATCTGGCAGCAAATGATATCCTGGATT
ACAAGGATGACGACGATAAGGTTTAA



[View online »](#)

Protein Sequence: >RC220551 representing NM_018363
Red=Cloning site Green=Tags(s)

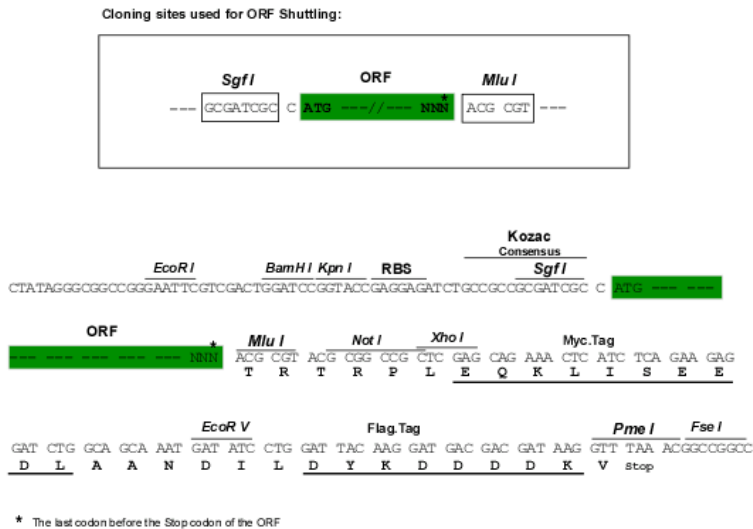
MAQVLIVGAGMTGSLCAALLRRQTSGLPLYAVWDKAEDSGGRMTTACSPHNPQCTADLGAQYITCTPHYA
 KKHQRFYDELLAYGVLRLPLSSPIEGMVMKEGDCNFVAPQGISSIIKHYLKESGAEVYFRHRVTQINLRDD
 KWEVSKQTGSPEQFDLIVLTMPVPEILQLQGDITTLISECQRQQLEAVSYSSRYALGLFYEAGTKIDVPW
 AGQYITSNPCIRFVSIDNKKRNIESSIEIGPSLVIHTTVPFGVTYLEHSIEDVQELVFQQLLENILPGLPQP
 IATKCKQWRHSQVPSAGVILGCAKSPWMMIAIGFPI

TRTRPLEQKLISEEDLAANDILDYKDDDDKV

Chromatograms: https://cdn.origene.com/chromatograms/mk6482_e10.zip

Restriction Sites: SgfI-MluI

Cloning Scheme:



ACCN: NM_018363

ORF Size: 945 bp

OTI Disclaimer: The molecular sequence of this clone aligns with the gene accession number as a point of reference only. However, individual transcript sequences of the same gene can differ through naturally occurring variations (e.g. polymorphisms), each with its own valid existence. This clone is substantially in agreement with the reference, but a complete review of all prevailing variants is recommended prior to use. [More info](#)

OTI Annotation: This clone was engineered to express the complete ORF with an expression tag. Expression varies depending on the nature of the gene.

Components: The ORF clone is ion-exchange column purified and shipped in a 2D barcoded Matrix tube containing 10ug of transfection-ready, dried plasmid DNA (reconstitute with 100 ul of water).

Reconstitution Method:

1. Centrifuge at 5,000xg for 5min.
2. Carefully open the tube and add 100ul of sterile water to dissolve the DNA.
3. Close the tube and incubate for 10 minutes at room temperature.
4. Briefly vortex the tube and then do a quick spin (less than 5000xg) to concentrate the liquid at the bottom.
5. Store the suspended plasmid at -20°C. The DNA is stable for at least one year from date of shipping when stored at -20°C.

RefSeq: [NM_018363.3](#)

RefSeq Size: 2107 bp

RefSeq ORF: 948 bp

Locus ID: 55328

UniProt ID: [Q5VYX0](#)

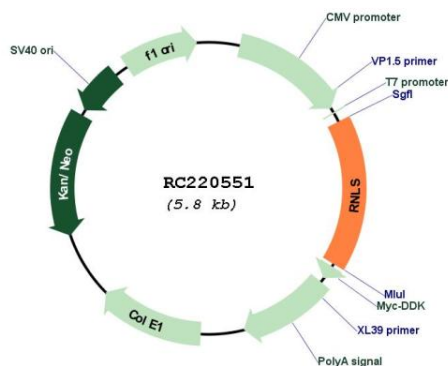
Cytogenetics: 10q23.31

Protein Families: Secreted Protein

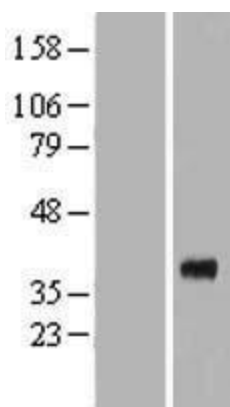
MW: 34.8 kDa

Gene Summary: Renalase is a flavin adenine dinucleotide-dependent amine oxidase that is secreted into the blood from the kidney (Xu et al., 2005 [PubMed 15841207]).[supplied by OMIM, Mar 2008]

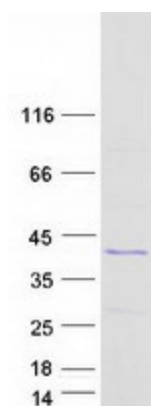
Product images:



Circular map for RC220551



Western blot validation of overexpression lysate (Cat# [LY413115]) using anti-DDK antibody (Cat# [TA50011-100]). Left: Cell lysates from untransfected HEK293T cells; Right: Cell lysates from HEK293T cells transfected with RC220551 using transfection reagent MegaTran 2.0 (Cat# [TT210002]).



Coomassie blue staining of purified RNLS protein (Cat# [TP320551]). The protein was produced from HEK293T cells transfected with RNLS cDNA clone (Cat# RC220551) using MegaTran 2.0 (Cat# [TT210002]).