

## Product datasheet for **RC220548L3V**

### Neurotensin Receptor 1 (NTSR1) (NM\_002531) Human Tagged ORF Clone Lentiviral Particle

#### Product data:

Product Type:	Lentiviral Particles
Product Name:	Neurotensin Receptor 1 (NTSR1) (NM_002531) Human Tagged ORF Clone Lentiviral Particle
Symbol:	Neurotensin Receptor 1
Synonyms:	NTR
Mammalian Cell Selection:	Puromycin
Vector:	pLenti-C-Myc-DDK-P2A-Puro (PS100092)
Tag:	Myc-DDK
ACCN:	NM_002531
ORF Size:	1254 bp
ORF Nucleotide Sequence:	The ORF insert of this clone is exactly the same as(RC220548).
OTI Disclaimer:	The molecular sequence of this clone aligns with the gene accession number as a point of reference only. However, individual transcript sequences of the same gene can differ through naturally occurring variations (e.g. polymorphisms), each with its own valid existence. This clone is substantially in agreement with the reference, but a complete review of all prevailing variants is recommended prior to use. <a href="#">More info</a>
OTI Annotation:	This clone was engineered to express the complete ORF with an expression tag. Expression varies depending on the nature of the gene.
RefSeq:	<a href="#">NM_002531.1</a> , <a href="#">NP_002522.1</a>
RefSeq Size:	4131 bp
RefSeq ORF:	1257 bp
Locus ID:	4923
UniProt ID:	<a href="#">P30989</a>
Cytogenetics:	20q13.33
Protein Families:	Druggable Genome, GPCR, Transmembrane
Protein Pathways:	Calcium signaling pathway, Neuroactive ligand-receptor interaction

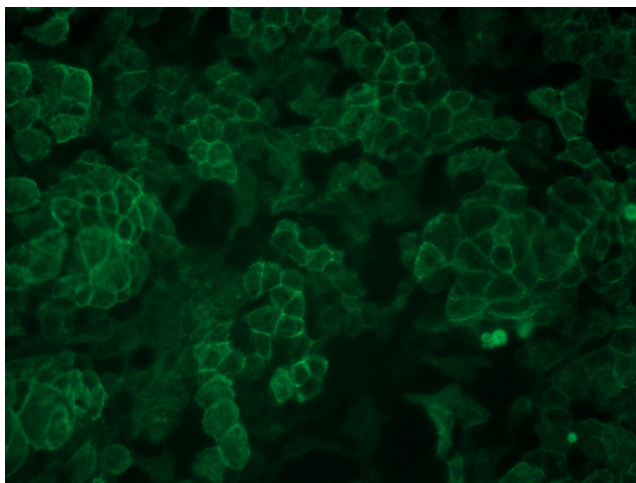


[View online »](#)

MW: 46.1 kDa

**Gene Summary:** Neurotensin receptor 1 belongs to the large superfamily of G-protein coupled receptors. NTSR1 mediates the multiple functions of neurotensin, such as hypotension, hyperglycemia, hypothermia, antinociception, and regulation of intestinal motility and secretion. [provided by RefSeq, Jul 2008]

**Product images:**



[RC220548L3] was used to prepare Lentiviral particles using [TR30037] packaging kit. HEK293T cells were transduced with RC220548L3V particle to overexpress human NTSR1-Myc-DDK fusion protein.