

Product datasheet for **RC220548**

Neurotensin Receptor 1 (NTSR1) (NM_002531) Human Tagged ORF Clone

Product data:

Product Type:	Expression Plasmids
Product Name:	Neurotensin Receptor 1 (NTSR1) (NM_002531) Human Tagged ORF Clone
Tag:	Myc-DDK
Symbol:	Neurotensin Receptor 1
Synonyms:	NTR
Mammalian Cell Selection:	Neomycin
Vector:	pCMV6-Entry (PS100001)
E. coli Selection:	Kanamycin (25 ug/mL)
ORF Nucleotide Sequence:	>RC220548 representing NM_002531 Red=Cloning site Blue=ORF Green=Tags(s)

TTTTGTAATACGACTCACTATAGGGCGGCCGGAATTCGTCGACTGGATCCGGTACCGAGGAGATCTGCC
GCC**CGATCGCC**

ATGCGCCTCAACAGCTCCGCGCCGGGAACCCGGGCACGCCGGCCGCGACCCCTCCAGCGGGCGCAGG
CCGGACTGGAGGAGGCGCTGCTGGCCCCGGCTTCGGCAACGCTTCGGGCAACCGCTCGGAGCGCGTCTCT
GGCGGCACCCAGCAGCGAGCTGGACGTGAACCCGACATCTACTCAAAGTGCTGGTACCGCCGTGTAC
CTGGCGCTCTTCGTGGTGGCAGGTTGGCAACACGGTGACGGCGTTCACGCTGGCGCGGAAGAAGTCGC
TGCAGAGCCTGCAGAGCACGGTGCATTACCACCTGGGCAGCCTGGCGCTGTCGACCTGCTCACCCCTGCT
GCTGGCCATGCCCGTGGAGCTGTACAATTCATCTGGGTGCACCACCCCTGGGCCTTCGGCGACGCCGGC
TGCCCGCGCTACTACTTCTGCGCGACGCTGCACCTACGCCACGGCCCTCAACGTGGCCAGCCTGAGTG
TGGAGCGCTACCTGGCCATCTGCCACCCCTTAAGGCCAAGACCCTCATGTCCCAGGCCGACCAAGAA
GTTTCATCAGCGCCATCTGGCTCGCTCGGCCCTGCTGACGGTGCCTATGCTGTTACCATGGGCGAGCAG
AACCAGCGCCGACGGCCAGCACGCCGGCGGCCCTGGTGTGCACCCCAACATCCACACTGCCACCGTCA
AGGTCGTCATACAGGTCAACACCTTCATGTCCTTCATATCCCCATGGTGGTTCATCTCGGTCCTGAACAC
CATCATCGCCAACAAGCTGACCGTATGGTACGCCAGGCGGCCGAGCAGGCGCAAGTGTGCACGGTCCGG
GGCGAGCACAGCATTACAGCATGGCCATCGAGCCTGGCAGGGTCCAGGCCCTGGCGACGGCGTGGCGG
TCCTACGTGCAGTGGTTCATCGCCTTTGGTCTGCTGGCTGCCCTACCAGTGCGCGCCTCATGTTCTG
CTACATCTCGGATGAGCAGTGGACTCCGTTCTCTATGACTTCTACCCTACTTCTACATGGTGACCAAC
GCACTTCTACGTCAGCTCCACCATCAACCCATCCTGTACAACCTCGTCTGCAACTTCCGCCACA
TCTTCTGGCCACACTGGCCTGCCTCTGCCCGGTGGCGGCGCAGGAGGAAGAGGCCAGCCTTCTCGAG
GAAGGCCGACAGCGTGTCCAGCAACACACCCCTCTCCAGCAATGCCACCCGCGAGACGCTGTAC

AG**CGGACCG**ACGCGTACGCGGCCGCTCGAGCAGAACTCATCTCAGAAGAGGATCTGGCAGCAAATGATATCC
TGGATTACAAGGATGACGACGATAAGGTTTAA



[View online >](#)

Protein Sequence: >RC220548 representing NM_002531
Red=Cloning site Green=Tags(s)

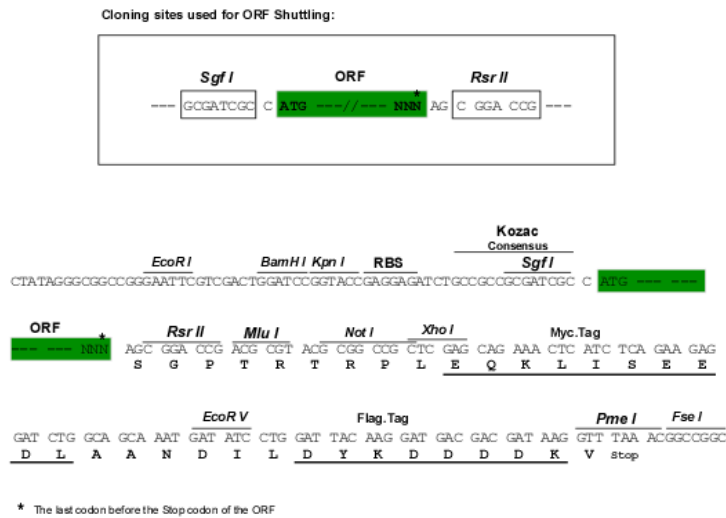
MRLNSSAPGTPGTPAADPFQRAQAGLEEEALLAPGFGNASGNASERVLAAPSELDVNTDIYSKVLVTAVY
 LALFVVGTVGNTVTAFTLARKKSLQSLQSTVHYHLGSLALSDLLTLLAMPVELYNFIWVHPWAFGDAG
 CRGYFLRDACTYATALNVASLSVERYLAICHFPKAKTLMRSRRTKFKISAIWLASALLTVPMLFTMGEQ
 NRSADGQHAGGLVCTPTIHTATVKVVIQVNTFMSFIFPMVVISVLNTIIANKLTVMVRQAAEQGQVCTVG
 GEHSTFSMAIEPGRVQALRHGVRVLRVVIAFVVCWLPYHVRRMLFCYISDEQWTPFLYDFYHYFYMVTN
 ALFYVSSSTINPILYNLVSANFRHIFLATLACLCPVWRRRRKRPAFSRKADSVSSNHTLSSNATRETLY

SGPTRTRRLEQKLI SEEDLAANDILDYKDDDDKV

Chromatograms: https://cdn.origene.com/chromatograms/mk6622_d09.zip

Restriction Sites: SgfI-RsrII

Cloning Scheme:



ACCN: NM_002531

ORF Size: 1254 bp

OTI Disclaimer: The molecular sequence of this clone aligns with the gene accession number as a point of reference only. However, individual transcript sequences of the same gene can differ through naturally occurring variations (e.g. polymorphisms), each with its own valid existence. This clone is substantially in agreement with the reference, but a complete review of all prevailing variants is recommended prior to use. [More info](#)

OTI Annotation: This clone was engineered to express the complete ORF with an expression tag. Expression varies depending on the nature of the gene.

Components: The ORF clone is ion-exchange column purified and shipped in a 2D barcoded Matrix tube containing 10ug of transfection-ready, dried plasmid DNA (reconstitute with 100 ul of water).

Reconstitution Method:

1. Centrifuge at 5,000xg for 5min.
2. Carefully open the tube and add 100ul of sterile water to dissolve the DNA.
3. Close the tube and incubate for 10 minutes at room temperature.
4. Briefly vortex the tube and then do a quick spin (less than 5000xg) to concentrate the liquid at the bottom.
5. Store the suspended plasmid at -20°C. The DNA is stable for at least one year from date of shipping when stored at -20°C.

RefSeq: [NM_002531.1](#), [NP_002522.1](#)

RefSeq Size: 4131 bp

RefSeq ORF: 1257 bp

Locus ID: 4923

UniProt ID: [P30989](#)

Cytogenetics: 20q13.33

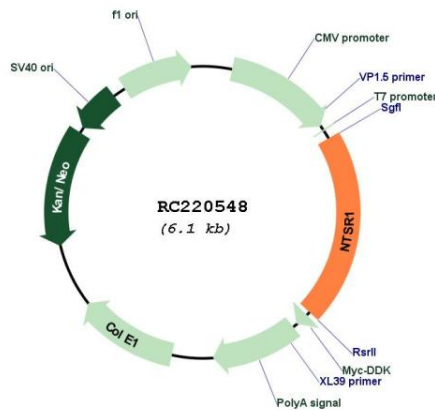
Protein Families: Druggable Genome, GPCR, Transmembrane

Protein Pathways: Calcium signaling pathway, Neuroactive ligand-receptor interaction

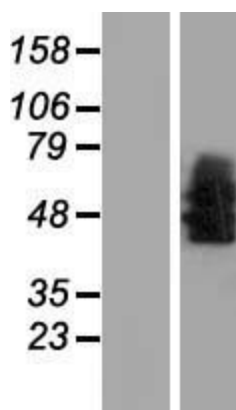
MW: 46.1 kDa

Gene Summary: Neurotensin receptor 1 belongs to the large superfamily of G-protein coupled receptors. NTSR1 mediates the multiple functions of neurotensin, such as hypotension, hyperglycemia, hypothermia, antinociception, and regulation of intestinal motility and secretion. [provided by RefSeq, Jul 2008]

Product images:



Circular map for RC220548



Western blot validation of overexpression lysate (Cat# [LY419265]) using anti-DDK antibody (Cat# [TA50011-100]). Left: Cell lysates from untransfected HEK293T cells; Right: Cell lysates from HEK293T cells transfected with RC220548 using transfection reagent MegaTran 2.0 (Cat# [TT210002]).