

Product datasheet for **RC220544**

Cyclin C (CCNC) (NM_005190) Human Tagged ORF Clone

Product data:

Product Type:	Expression Plasmids
Product Name:	Cyclin C (CCNC) (NM_005190) Human Tagged ORF Clone
Tag:	Myc-DDK
Symbol:	Cyclin C
Synonyms:	CycC; hSRB11; SRB11
Mammalian Cell Selection:	Neomycin
Vector:	pCMV6-Entry (PS100001)
E. coli Selection:	Kanamycin (25 ug/mL)
ORF Nucleotide Sequence:	>RC220544 representing NM_005190 Red=Cloning site Blue=ORF Green=Tags(s)

TTTTGTAATACGACTCACTATAGGGCGGCCGGAATTCGTCGACTGGATCCGGTACCGAGGAGATCTGCC
GCC**CGGATCGCC**

ATGGCAGGGAACTTTTGGCAGAGCTCCCACTATTTGCAATGGATTTTGGATAAACAAGATCTGTTGAAGG
AGCGCCAAAAGGATTTAAAGTTTCTCTCAGAGGAAGAATATTGGAAGTTACAAATATTTTTACAAATGT
TATCCAAGCATTAGGTGAACATCTAAATTAAGACAACAAGTTATTGCCACTGCTACGGTATATTTCAAG
AGATTCTATGCCAGGTATTCTCTGAAAAGTATAGATCCTGTATTAATGGCTCCTACATGTGTGTTTTGG
CATCCAAAGTAGAGGAATTTGGAGTAGTTTCAAATACAAGATTGATTGCTGCTGCTACTTCTGTATTA
AACTAGATTTTCATATGCCTTTCCAAAGGAATTCCTTATAGGATGAATCATATATTAGAATGTGAATTC
TATCTGTTAGAATAATGGATTGTTGCTTGATAGTGTATCATCCTTATAGACCTTTGCTCCAGTATGTGC
AGGACATGGGCCAAGAAGACATGTTGCTTCCCCTTGCAATGGAGGATAGTGAATGATACCTACAGAACGGA
TCTTTGCCTACTGTATCCTTTCATGATAGCTTTAGCTTGCTACATGTAGCCTGTGTTGTACAGCAG
AAAGATGCCAGGCAATGGTTTGTGAGCTTTCTGTGGATATGGAAAAGATTTTGGAAATAATCAGGGTTA
TTTTAAACTATATGAGCAGTGAAGAATTTTCGATGAGAGAAAAGAGATGGCAACCATTCTAGTAAGAT
GCCAAAACAAAACCACTCCAAACAGTGAAGGAGAGCAGGGTCCAAATGGAAGTCAGAATCTAGCTAC
AGCCAATCT

ACGCGTACGCGGCCGCTCGAGCAGAAACTCATCTCAGAAGAGGATCTGGCAGCAAATGATATCCTGGATT
ACAAGGATGACGACGATAAGGTTTAA



[View online »](#)

Protein Sequence: >RC220544 representing NM_005190
Red=Cloning site Green=Tags(s)

MAGNFWQSSHYLQWILDKQDLLKERQKDLKFLSEEEYWKLQIFFTNVIQALGEHLKLRQQVIATATVYFK
 RFYARYSLKSIDPVLMAPTCVFLASKVEEFGVVSNTRLIAAATSVLKTRFSYAFPKEFPYRMNHILECEF
 YLLELMDCCILIVYHPYRPLLQYVQDMGQEDMLLPLAWRIVNDTYRTDCLLYPPFMIALACLVACVAVVQQ
 KDARQWFAELSVDMEKILEIIRVILKLYEQWKNFDERKEMATILSKMPKPKPPNSEGEQGPNGSQNSSY
 SQS

TRTRPLEQKLISEEDLAANDILDYKDDDDKV

Chromatograms: https://cdn.origene.com/chromatograms/mk6172_b08.zip

Restriction Sites: SgfI-MluI

Cloning Scheme:



ACCN: NM_005190

ORF Size: 849 bp

OTI Disclaimer: The molecular sequence of this clone aligns with the gene accession number as a point of reference only. However, individual transcript sequences of the same gene can differ through naturally occurring variations (e.g. polymorphisms), each with its own valid existence. This clone is substantially in agreement with the reference, but a complete review of all prevailing variants is recommended prior to use. [More info](#)

OTI Annotation: This clone was engineered to express the complete ORF with an expression tag. Expression varies depending on the nature of the gene.

Components: The ORF clone is ion-exchange column purified and shipped in a 2D barcoded Matrix tube containing 10ug of transfection-ready, dried plasmid DNA (reconstitute with 100 ul of water).

Reconstitution Method:

1. Centrifuge at 5,000xg for 5min.
2. Carefully open the tube and add 100ul of sterile water to dissolve the DNA.
3. Close the tube and incubate for 10 minutes at room temperature.
4. Briefly vortex the tube and then do a quick spin (less than 5000xg) to concentrate the liquid at the bottom.
5. Store the suspended plasmid at -20°C. The DNA is stable for at least one year from date of shipping when stored at -20°C.

RefSeq: [NM_005190.4](#)

RefSeq Size: 2321 bp

RefSeq ORF: 852 bp

Locus ID: 892

UniProt ID: [P24863](#)

Cytogenetics: 6q16.2

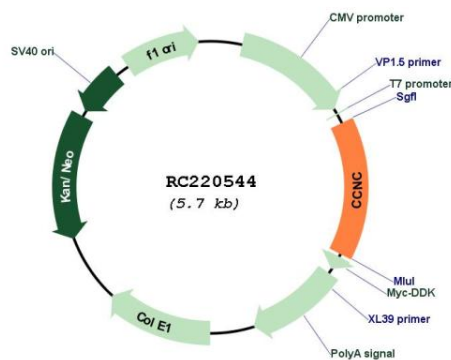
Domains: CYCLIN, cyclin

Protein Families: Druggable Genome, Transcription Factors

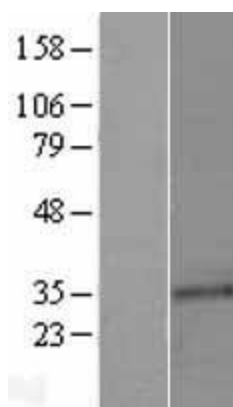
MW: 33.1 kDa

Gene Summary: The protein encoded by this gene is a member of the cyclin family of proteins. The encoded protein interacts with cyclin-dependent kinase 8 and induces the phosphorylation of the carboxy-terminal domain of the large subunit of RNA polymerase II. The level of mRNAs for this gene peaks in the G1 phase of the cell cycle. Two transcript variants encoding different isoforms have been found for this gene. [provided by RefSeq, Jul 2008]

Product images:



Circular map for RC220544



Western blot validation of overexpression lysate (Cat# [LY401590]) using anti-DDK antibody (Cat# [TA50011-100]). Left: Cell lysates from untransfected HEK293T cells; Right: Cell lysates from HEK293T cells transfected with RC220544 using transfection reagent MegaTran 2.0 (Cat# [TT210002]).