

Product datasheet for **RC220540**

SYVN1 (NM_172230) Human Tagged ORF Clone

Product data:

Product Type:	Expression Plasmids
Product Name:	SYVN1 (NM_172230) Human Tagged ORF Clone
Tag:	Myc-DDK
Symbol:	SYVN1
Synonyms:	DER3; HRD1
Mammalian Cell Selection:	Neomycin
Vector:	pCMV6-Entry (PS100001)
E. coli Selection:	Kanamycin (25 ug/mL)



[View online »](#)

Chromatograms: https://cdn.origene.com/chromatograms/mg2944_d11.zip

Restriction Sites: SgfI-MluI

Cloning Scheme:



ACCN: NM_172230

ORF Size: 1851 bp

OTI Disclaimer: The molecular sequence of this clone aligns with the gene accession number as a point of reference only. However, individual transcript sequences of the same gene can differ through naturally occurring variations (e.g. polymorphisms), each with its own valid existence. This clone is substantially in agreement with the reference, but a complete review of all prevailing variants is recommended prior to use. [More info](#)

OTI Annotation: This clone was engineered to express the complete ORF with an expression tag. Expression varies depending on the nature of the gene.

Components: The ORF clone is ion-exchange column purified and shipped in a 2D barcoded Matrix tube containing 10ug of transfection-ready, dried plasmid DNA (reconstitute with 100 ul of water).

- Reconstitution Method:**
1. Centrifuge at 5,000xg for 5min.
 2. Carefully open the tube and add 100ul of sterile water to dissolve the DNA.
 3. Close the tube and incubate for 10 minutes at room temperature.
 4. Briefly vortex the tube and then do a quick spin (less than 5000xg) to concentrate the liquid at the bottom.
 5. Store the suspended plasmid at -20°C. The DNA is stable for at least one year from date of shipping when stored at -20°C.

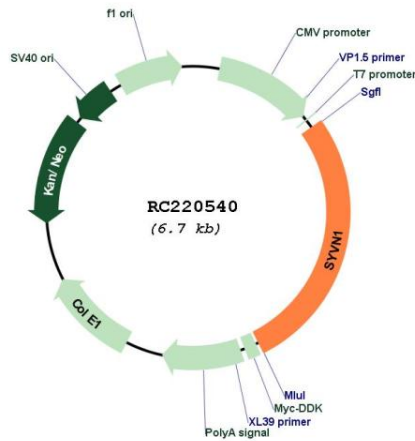
Note: Plasmids are not sterile. For experiments where strict sterility is required, filtration with 0.22um filter is required.

RefSeq: [NM_172230.3](#)

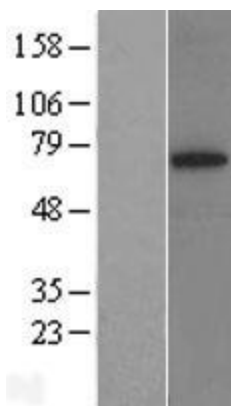
RefSeq Size: 3074 bp

RefSeq ORF:	1854 bp
Locus ID:	84447
UniProt ID:	Q86TM6
Cytogenetics:	11q13.1
Protein Families:	Druggable Genome, Transmembrane
Protein Pathways:	Ubiquitin mediated proteolysis
MW:	67.5 kDa
Gene Summary:	This gene encodes a protein involved in endoplasmic reticulum (ER)-associated degradation. The encoded protein removes unfolded proteins, accumulated during ER stress, by retrograde transport to the cytosol from the ER. This protein also uses the ubiquitin-proteasome system for additional degradation of unfolded proteins. Sequence analysis identified two transcript variants that encode different isoforms. [provided by RefSeq, May 2011]

Product images:



Circular map for RC220540



Western blot validation of overexpression lysate (Cat# [LY406753]) using anti-DDK antibody (Cat# [TA50011-100]). Left: Cell lysates from untransfected HEK293T cells; Right: Cell lysates from HEK293T cells transfected with RC220540 using transfection reagent MegaTran 2.0 (Cat# [TT210002]).