

Product datasheet for **RC220536**

TLE4 (NM_007005) Human Tagged ORF Clone

Product data:

Product Type:	Expression Plasmids
Product Name:	TLE4 (NM_007005) Human Tagged ORF Clone
Tag:	Myc-DDK
Symbol:	TLE4
Synonyms:	BCE-1; BCE1; E(spl); E(spl); ESG; ESG4; Grg-4; GRG4
Mammalian Cell Selection:	Neomycin
Vector:	pCMV6-Entry (PS100001)
E. coli Selection:	Kanamycin (25 ug/mL)



[View online »](#)

ORF Nucleotide Sequence:

>RC220536 representing NM_007005
 Red=Cloning site Blue=ORF Green=Tags(s)

TTTTGTAATACGACTCACTATAGGGCGGCCGGAATTCGTCGACTGGATCCGGTACCGAGGAGATCTGCC
 GCC**CGCATCGCC**

ATGATTTCGCGACCTGAGCAAGATGTACCCGACAGACACCCGGCACCGCATCAGCCTGCTCAACCTT
 TTAATTTTACAATTTCCGAATCCTGTGATCGGATTAAGGAAGAGTTTCAGTTTTTACAGGCTCAATACCA
 CAGTCTGAAGCTGGAATGTGAGAACTCCGCAAGTGAAGACAGAGATGCAGCGCATTATGTCATGTAT
 TATGAAATGTCCTATGGTTGAATATAGAAATGCACAAGCAGGCAGAGATTGTCAAGAGGCTGAATGCTA
 TCTGTGCACAAGTCATTCTTTCTGTCCCAAGAGCACCAGCAACAAGTGGTGCAGGCTGTGGAACGGGC
 CAAGCAGGTGACCATGGCAGAATGAACGCCATCATTGGGCAACAACCCAGGCCAGCATTTATCACAT
 GGACATGGTCTCCCCGTACCTCTGACTCCACACCTTCAGGGCTCCAGCCCCCTGCCATTCCACCCATCG
 GTAGCAGTGCCGGCTTCTGGCCCTCTCCAGTGTCTAGGAGTCAAGTCCATCTTCCAATTAAGATGA
 GAAGAAGCACCATGACAATGATCACAAAGAGACAGAGACTCCATCAAGAGCTCTTCAGTATCCCCATCA
 GCCAGTTTCCGAGGTGCTGAGAAGCACAGAACTCCGCAGACTACTCCTCAGAGAGCAAAAAGCAGAAAA
 CTGAAGAAAAGGAAATTGCAGCTCGTTATGACAGCGATGGTGAGAAAAGTATGACAACCTTGGTGGTTGA
 CGTTTTCAATGAGGATCCATCTTCCCCTCGAGGGAGCCAGCACATTCCCCCAGAGAGAATGGCCTAGAC
 AAGACACGCCTGCTCAAGAAAGATGCCCGATTAGTCCAGCCTCTATTGCATCTTCCAGCAGTACTCCCT
 CCTCCAATCAAAGAATTAGCCTTAATGAAAAATCTACTACTCCCGTCTCAAAGTCCAATACCCCTAC
 TCCACGAACTGATGCGCCACCCAGGCAGTAACTCTACTCCCGATTGAGGCCTGTACCTGGAAAAACCA
 CCAGGAGTTGACCCTTTGGCCTCAAGCCTAAGGACCCCAATGGCAGTACCTTGTCCATATCCAACCTCC
 TTGGGATTGTGCCCATGCTGGAATGAACGGAGAGCTGACCAGCCCCGGAGCGGCCTACGCTGGGCTCCA
 CAACATCTCCCCTCAGATGAGCGCAGCTGCTGCCGCCCGCTGCTGCTGCCTATGGGAGATACCA
 GTGGTGGGATTTGATCCACACCATCACATGCGTGTGCCAGCAATACCTCCAAACCTGACAGGCATCCAG
 GAGAAAACCAGCATACTCCTTCCATGTTAGCGCAGATGGTCAGATGCAGCCTGTCCCTTTTCCACCCGA
 CGCCCTCATCGGACCTGGAATCCCCGGCATGCTCGCCAGATCAACACCTCAACCACGGGGAGGTGGTG
 TGCGCGGTGACCATCAGCAACCCACGAGACACGTGTACACGGGTGGGAAGGGCTGCGTCAAGGTCTGGG
 ACATCAGCCACCCAGGCAATAAGAGTCTGTCTCCAGCTCGACTGTCTGAACAGGGATAACTACATCCG
 TTCCTGCAGATTGCTCCCTGATGGTGCACCCCTAATTGTTGGAGGGGAAGCCAGTACTTTGTCCATTGG
 GACCTGGCGGCTCCAACCCACGCATCAAGGCAGAGCTGACATCCTCGGCCCCCGCTGCTATGCCCTGG
 CCATCAGCCCCGATTCCAAGGTCTGCTTCTCATGCTGCAGCGACGCAACATCGCTGTGTGGGATCTGCA
 CAACCAGACCTTGGTGAAGCAATTCCAGGGCCACACAGATGGAGCCAGCTGTATTGACATTTCTAATGAT
 GGCACCAAGCTCTGGACAGGTGGTTTGGACAACACGGTCAAGTCTGGGACCTGCGCGAGGGGCGGCAGC
 TGCAGCAGCAGACTTACCTCCAGATCTTTTCTCTGGGCTACTGCCAACTGGAGAGTGGCTTGCAGT
 GGGGATGGAGAACAGCAATGTGGAAGTTTTGCATGTCCAAAGCCAGACAAATACCAACTACATCTTCAT
 GAGAGCTGTGTGCTGTGCTCAAGTTTGGCCATGTGGCAATGGTTTGTAAAGACTGGAAGGACAACC
 TTCTGAATGCCTGGAGAACACCTTATGGGGCCAGTATATCCAGTCCAAGAATCCTCATCGGTGCTTAG
 CTGTGACATCTCGTGGACGACAAATACATTGTCACTGGCTCTGGGGATAAGAAGGCCACAGTTTATGAA
 GTTATTTAT

ACGCGTACGCGGCCGCTCGAGCAGAACTCATCTCAGAAGAGGATCTGGCAGCAATGATATCCTGGATT
 ACAAGGATGACGACGATAAGGTTTAA

Protein Sequence: >RC220536 representing NM_007005
Red=Cloning site Green=Tags(s)

MIRDL SKMYPQTRHPAPHQPAQPFKFTISESCDRIKEEFQFLQAQYHSLKLECEKLASEKTEMQRHYVMY
YEMSYGLNIEMHKQAEIVKRLNAICAQVIPFLSQEHQQVVQAVERAKQVTMAELNAIIGQQLQAQHLSH
GHGLPVPLTPHPSGLQPPAIPPIGSSAGLLALSSALGGQSHLPKDEKKHHDNDHQDRDRIKSSSVSPS
ASFRTGAEKHRNSADYSSSEKQKTEEKEIAARYDSGEEKSDDNLVVDVSNEDPSSPRGSPAHSPRENGLD
KTRLLKKDAPISPASIASSSSTPSSKSKELSLNEKSTTPVSKSNTPTPRTDAPTPGSNSTPGLRPVPGK
PGVDPLASSLRTPMAVPCPYPTPFGIVPHAGMNGELTSPGAAYAGLHNISPQMSAAAAAAAAAAAYGRSP
VVGFDPHHMRVPAIPPNLTGIPGGKPAYSFHVSADGQMOPVFPFPDALIGPGIPRHARQINTLNHGEVV
CAVTISNPTRHVYTGKGCVKVWDISHPGNKSPVSQLDCLNRDNYIRSCRLLPDGRTLIVGGEASTLSIW
DLAAPTTRIKAELTSSAPACYALAI SPDSKVCFCSSDGNIAVWDLHNQTLVRQFQGHTDGASCIDISND
GTKLWTGGLDNTVRSWDLREGRQLQQHDFTSQIFSLGYCPTGEWLAVGMENSNEVLHVTKPKDYQLHLH
ESCVL SLKFAHCGKWFVSTGKDNLLNAWRTPYGASIFQSKESSVLSCDISVDDKYIVTGS GDKKATVYE
VIY

TRTRPLEQKLISEEDLAANDILDYKDDDDKV

Chromatograms: https://cdn.origene.com/chromatograms/mk8028_d01.zip

Restriction Sites: Sgfl-Mlul

Cloning Scheme:


ACCN: NM_007005

ORF Size: 2319 bp

OTI Disclaimer: The molecular sequence of this clone aligns with the gene accession number as a point of reference only. However, individual transcript sequences of the same gene can differ through naturally occurring variations (e.g. polymorphisms), each with its own valid existence. This clone is substantially in agreement with the reference, but a complete review of all prevailing variants is recommended prior to use. [More info](#)

OTI Annotation: This clone was engineered to express the complete ORF with an expression tag. Expression varies depending on the nature of the gene.

Components: The ORF clone is ion-exchange column purified and shipped in a 2D barcoded Matrix tube containing 10ug of transfection-ready, dried plasmid DNA (reconstitute with 100 ul of water).

Reconstitution Method:

1. Centrifuge at 5,000xg for 5min.
2. Carefully open the tube and add 100ul of sterile water to dissolve the DNA.
3. Close the tube and incubate for 10 minutes at room temperature.
4. Briefly vortex the tube and then do a quick spin (less than 5000xg) to concentrate the liquid at the bottom.
5. Store the suspended plasmid at -20°C. The DNA is stable for at least one year from date of shipping when stored at -20°C.

RefSeq: [NM_007005.5](#)

RefSeq Size: 4749 bp

RefSeq ORF: 2322 bp

Locus ID: 7091

UniProt ID: [Q04727](#)

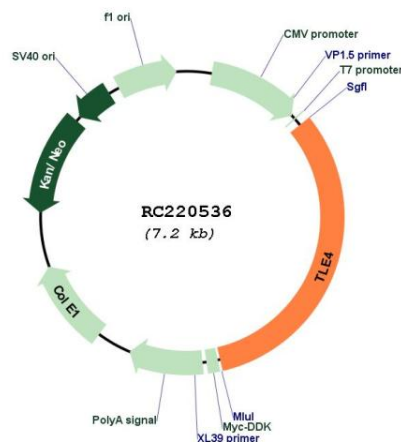
Cytogenetics: 9q21.31

Protein Families: Transcription Factors

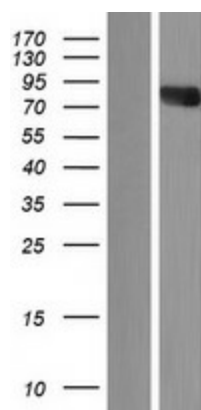
MW: 83.6 kDa

Gene Summary: Transcriptional corepressor that binds to a number of transcription factors. Inhibits the transcriptional activation mediated by PAX5, and by CTNNB1 and TCF family members in Wnt signaling. The effects of full-length TLE family members may be modulated by association with dominant-negative AES. Essential for the transcriptional repressor activity of SIX3 during retina and lens development and for SIX3 transcriptional auto-repression (By similarity). [UniProtKB/Swiss-Prot Function]

Product images:



Circular map for RC220536



Western blot validation of overexpression lysate (Cat# [LY416261]) using anti-DDK antibody (Cat# [TA50011-100]). Left: Cell lysates from untransfected HEK293T cells; Right: Cell lysates from HEK293T cells transfected with RC220536 using transfection reagent MegaTran 2.0 (Cat# [TT210002]).