

Product datasheet for **RC220535**

COL23A1 (NM_173465) Human Tagged ORF Clone

Product data:

Product Type:	Expression Plasmids
Product Name:	COL23A1 (NM_173465) Human Tagged ORF Clone
Tag:	Myc-DDK
Symbol:	COL23A1
Mammalian Cell Selection:	Neomycin
Vector:	pCMV6-Entry (PS100001)
E. coli Selection:	Kanamycin (25 ug/mL)



[View online »](#)

ORF Nucleotide Sequence:

>RC220535 representing NM_173465
 Red=Cloning site Blue=ORF Green=Tags(s)

TTTTGTAATACGACTCACTATAGGGCGGCCGGGAATTCGTCGACTGGATCCGGTACCGAGGAGATCTGCC
 GCC**CGGATCGCC**

ATGGGCCAGCGAGCGCCGGTGGCGCGCGACGCGGGAAGGGCAATGCGCGGGCGCGCGCGCG
 GAGGGCGCTCGGCGACGACGCGCCGGTCCCGGGCGGTGAGCGCGCTGTGCCTGCTCTCCGTGGGCTC
 GGCGGCTGCCTGCTGCTGGGTGTCCAGGCGCGCGCTGCAGGGCCGGGTGGCGCGCTCGAGGAG
 GAGCGGGAGTGTGCGGCGCGGGGCCGCCAGGCGCCCTGGACGCTGGGCGAGCCGCACCTGGAGC
 GCCTGCTCGGGAGAAGTTGGACGGACTAGCGAAGATCCGGACTGCTCGGGAAGCTCCATCCGAATGTGT
 CTGCCCCCAGGGCCCCCTGGACGGCGCGCAAGCCTGGGAGAAGAGGCGACCCTGGTCTCCAGGGCAA
 TCAGGACGAGATGGTACCCGGGACCCCTGGGTTTGGATGGCAAGCCGGACTTCCAGGCCCGAAAGGGG
 AAAAGGGTGCACCAGGAGACTTTGGCCCCGGGAGACCAAGGACAAGATGGAGCTGCTGGGCTCCGGG
 GCCCCTGGACCTCCTGGGGCCCGGGCCCTCCTGGCGACTGGGAAAGATGGCCCCAGGGGAGCACAA
 GGCCAGCGGGCCCAAAGGAGAGCCCGGACAAGACGGCGAGATGGGCCCAAAGGGACCCCAAGGGCCCA
 AGGGTGAGCCTGGAGTACCTGGAAGAAGGGCGACGATGGGACACCAAGCCAGCCTGGACCACAGGGCC
 CAAGGGCGAGCCAGGGAGCATGGGGCTCGGGGAGAGAACGGTGTGGACGGTGGCCAGGACCGAAGGGG
 GAGCCTGGCCACCGAGGCACGGATGGAGCTGCAGGGCCCCGGGTGCCCCAGGCTCAAGGGCGAGCAGG
 GAGACACAGTGGTGCAGTATGATGGCAGGATCTTGGATGCCCTCAAGGGGCTCCCGGACCACAGGG
 GCCCCAGGGCCACCAGGGATCCCTGGAGCCAAGGGCGAGCTTGGATTGCCCGGTGCCCCAGGAATCGAT
 GGAGAGAAGGGCCCAAAGGACAGAAAGGAGACCCAGGAGAGCCTGGGCCAGCAGGACTCAAAGGGGAAG
 CAGGCGAGATGGCTTGTCCGGCTCCCGGGCGCTGACGGCCTCAAGGGGAGAAAGGGGAGTCCGGCTC
 TGACAGCCTACAGGAGAGCCTGGCTCAGCTCATAGTGGAGCCAGGGCCCTGGCCCCCTGGCCCCCA
 GGCCCGATGGGCCTCCAGGGAATCCAGGGTCCCAAGGGCTTGGATGGAGCAAAGGGAGAGAAGGGTGCCT
 CGGGTGAGAGAGGCCCCAGCGGCCTGCCTGGGCCAGTTGGCCACCGGGCCTTATTGGGCTGCCAGGAAC
 CAAAGGAGAGAAGGGCAGACCCGGGAGCCAGGACTAGATGGTTTCCCTGGACCCGAGGAGAGAAAAGGT
 GATCGGAGCGAGCGTGGAGAGAAGGGAGAACGAGGGGTCCCCGGCGGAAAGGAGTGAAGGGCCAGAAGG
 GCGAGCCGGGACCACCAGGCCTGGACCAGCCGTGTCCCGTGGGCCCGACGGGCTGCCTGTGCTGGCTG
 CTGGCATAAG

ACGCGTACGCGGCGGCTCGAGCAGAAACTCATCTCAGAAGAGGATCTGGCAGCAAATGATATCCTGGATT
 ACAAGGATGACGACGATAAGGTTTAA

Protein Sequence:

>RC220535 representing NM_173465
 Red=Cloning site Green=Tags(s)

MGPGERAGGGDAGKNAAGGGGGRSATTAGSRAVSALCLLLSVGSAAACLLLVQAAAALQGRVAALEE
 ERELLRRAGPPGALDAWAEPHLERLLREKLDGLAKIRTAREAPSECVCPPGPPGRRGKPRRRGDPGPPGQ
 SGRDGYGPLGLDGKPLPGPKGEKAGPFDGPRGDQGDGAAGPPGPPGPPGARPPGDTGKDGPRGAQ
 GPAGPKGEPGQDGMGPKGPPGPKGEPGVPKKGDDGTPSQPPGPKGEPGSMGPRGENVDGAPGPKG
 EPGHRGTDGAAGPRGAPGLKGEQDQTVVVDYDGRILDALKGPPGPPGPPGPIGAKGELGLPGAPGID
 GEKGPKGQKQDPEPAGLKEAGEMGLSGLPGADGLKGEKESASDSLQESLAQLIVEPDPGPPGPPGPP
 GPMGLQGIQGPGLDGAKEKASGERGPSGLPGVPVPPGLIPLGPKGKGRPEGLDGFPPRGEK
 DRSERGEKGERGVPGRKGVKQKGEPPGLDQPCVGPDPGLPVPGCWHK

TRTRPLEQKLISEEDLAANDILDYKDDDDKV

Chromatograms:

https://cdn.origene.com/chromatograms/mk8042_b03.zip

Restriction Sites:

Sgfl-Mlul

Cloning Scheme:


ACCN: NM_173465

ORF Size: 1620 bp

OTI Disclaimer: The molecular sequence of this clone aligns with the gene accession number as a point of reference only. However, individual transcript sequences of the same gene can differ through naturally occurring variations (e.g. polymorphisms), each with its own valid existence. This clone is substantially in agreement with the reference, but a complete review of all prevailing variants is recommended prior to use. [More info](#)

OTI Annotation: This clone was engineered to express the complete ORF with an expression tag. Expression varies depending on the nature of the gene.

Components: The ORF clone is ion-exchange column purified and shipped in a 2D barcoded Matrix tube containing 10ug of transfection-ready, dried plasmid DNA (reconstitute with 100 ul of water).

- Reconstitution Method:**
1. Centrifuge at 5,000xg for 5min.
 2. Carefully open the tube and add 100ul of sterile water to dissolve the DNA.
 3. Close the tube and incubate for 10 minutes at room temperature.
 4. Briefly vortex the tube and then do a quick spin (less than 5000xg) to concentrate the liquid at the bottom.
 5. Store the suspended plasmid at -20°C. The DNA is stable for at least one year from date of shipping when stored at -20°C.

RefSeq: [NM_173465.4](#)

RefSeq Size: 3067 bp

RefSeq ORF: 1623 bp

Locus ID: 91522

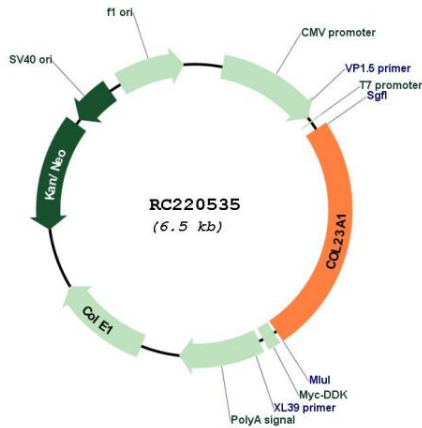
UniProt ID: [Q86Y22](#)

Cytogenetics: 5q35.3

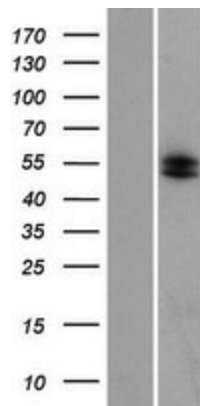
MW: 51.8 kDa

Gene Summary: COL23A1 is a member of the transmembrane collagens, a subfamily of the nonfibrillar collagens that contain a single pass hydrophobic transmembrane domain (Banyard et al., 2003 [PubMed 12644459]).[supplied by OMIM, Mar 2008]

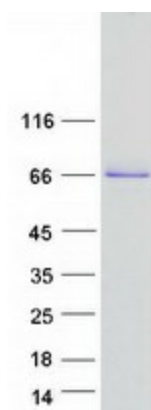
Product images:



Circular map for RC220535



Western blot validation of overexpression lysate (Cat# [LY406619]) using anti-DDK antibody (Cat# [TA50011-100]). Left: Cell lysates from untransfected HEK293T cells; Right: Cell lysates from HEK293T cells transfected with RC220535 using transfection reagent MegaTran 2.0 (Cat# [TT210002]).



Coomassie blue staining of purified COL23A1 protein (Cat# [TP320535]). The protein was produced from HEK293T cells transfected with COL23A1 cDNA clone (Cat# RC220535) using MegaTran 2.0 (Cat# [TT210002]).