

Product datasheet for **RC220518**

RAB19B (RAB19) (NM_001008749) Human Tagged ORF Clone

Product data:

Product Type: Expression Plasmids
Product Name: RAB19B (RAB19) (NM_001008749) Human Tagged ORF Clone
Tag: Myc-DDK
Symbol: RAB19B
Synonyms: RAB19B
Mammalian Cell Selection: Neomycin
Vector: pCMV6-Entry (PS100001)
E. coli Selection: Kanamycin (25 ug/mL)
ORF Nucleotide Sequence: >RC220518 representing NM_001008749
 Red=Cloning site Blue=ORF Green=Tags(s)

TTTTGTAATACGACTCACTATAGGGCGGCCGGAATTCGTCGACTGGATCCGGTACCGAGGAGATCTGCC
 GCC**CGATCGCC**

ATGCATTCTCCAGCTCAGCCAGGGCAGCAGATGAGAACTTTGACTATTTGTTCAAGATTATCCTCATTG
 GGGATTCCAATGTGGGAAGACGTGTGTGGTGCAGCATTCAAGTCTGGAGTCTACACTGAGACACAGCA
 GAACACGATTGGAGTGGACTTTACCGTGCCTTCCCTTGATATTGACGGCAAAAAGTGAAGAACAGTTCCG
 GCCAGTATTACCTTTGCCAGTATCCAGATCCACGGGCAGACTCAAAGATGAGCCCCAAATCTGGA
 CCAAGAGTTCCATTACCTGTGGGAACCCCTGATTTGGACTCTCCTTCTGTCTTCTCCAGATGCAGGT
 GTGGGACACAGCTGGCCAGGAGCGCTTCCGCACCATCACCCAAAGCTACTACCGCAGTGCCACGCAGCC
 ATCATCGCCTATGACCTACCCGGCGGTCCACGTTTCGAGTCCATCCCTCACTGGATTATGAGATAGAGA
 AATATGGAGCTGCAAATGTGGTCATTATGCTGATTGAAAATAAATGTGACCTCTGGGAAAAGCGGCACGT
 CCTGTTGAGGATGCCTGCACACTGGCTGAGAAGTACGGCCTCTGGCCGTTTTGGAGACATCTGCCAAG
 GAGTCAAAGAACATAGAAGAAGTCTTCTGTGCTCATGGCCAAGGAGCTGATCGCGCGCAACAGCCTGCACC
 TATATGGGAGAGTGCCCTGAACGGCTCCCCCTGGACTCCAGCCCCGTTCTTATGGCCAGGGTCCAAG
 TGAAGAAGACCCACTGCACTTGC

ACGCGTACGCGGCCGCTCGAGCAGAAACTCATCTCAGAAGAGGATCTGGCAGCAAATGATATCCTGGATT
 ACAAGGATGACGACGATAAGGTTTAA



[View online »](#)

Protein Sequence: >RC220518 representing NM_001008749
Red=Cloning site Green=Tags(s)

MHFSSSARAADENFDYLFKIIILIGDSNVGKTCVVQHFKSGVYTETQQNTIGVDFTVRSIDLIDGKKVKNSS
 ASIITFASIQIHGQTQKMSPQIWTKSSHYLWEPLIWTLLPVLLQMQVWDTAGQERFRTITQSYRSAHAA
 IIAIDLTRRSTFESIPHWIHEIEKYGAANVVIIMLIGNKCDLWEKRHVLFEACTLAEKYGLLAVLETSAK
 ESKNIEEVFVLMAKELIARNSLHLYGESALNGLPLDSSPVLMAQGPSEKTHCTC

TRTRPLEQKLISEEDLAANDILDYKDDDDKV

Chromatograms: https://cdn.origene.com/chromatograms/mk6505_a03.zip

Restriction Sites: SgfI-MluI

Cloning Scheme:



ACCN: NM_001008749

ORF Size: 792 bp

OTI Disclaimer: The molecular sequence of this clone aligns with the gene accession number as a point of reference only. However, individual transcript sequences of the same gene can differ through naturally occurring variations (e.g. polymorphisms), each with its own valid existence. This clone is substantially in agreement with the reference, but a complete review of all prevailing variants is recommended prior to use. [More info](#)

OTI Annotation: This clone was engineered to express the complete ORF with an expression tag. Expression varies depending on the nature of the gene.

Components: The ORF clone is ion-exchange column purified and shipped in a 2D barcoded Matrix tube containing 10ug of transfection-ready, dried plasmid DNA (reconstitute with 100 ul of water).

Reconstitution Method:

1. Centrifuge at 5,000xg for 5min.
2. Carefully open the tube and add 100ul of sterile water to dissolve the DNA.
3. Close the tube and incubate for 10 minutes at room temperature.
4. Briefly vortex the tube and then do a quick spin (less than 5000xg) to concentrate the liquid at the bottom.
5. Store the suspended plasmid at -20°C. The DNA is stable for at least one year from date of shipping when stored at -20°C.

RefSeq: [NM_001008749.1](#), [NP_001008749.1](#)

RefSeq Size: 952 bp

RefSeq ORF: 654 bp

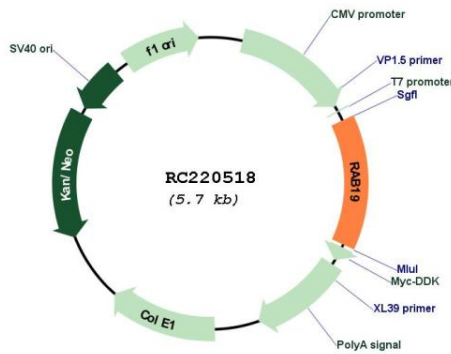
Locus ID: 401409

UniProt ID: [A4D1S5](#)

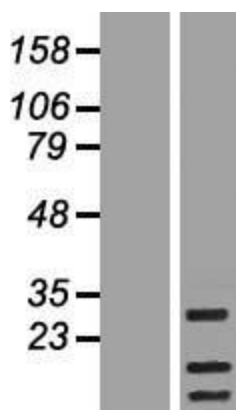
Cytogenetics: 7q34

MW: 29.8 kDa

Product images:



Circular map for RC220518



Western blot validation of overexpression lysate (Cat# [LY423372]) using anti-DDK antibody (Cat# [TA50011-100]). Left: Cell lysates from untransfected HEK293T cells; Right: Cell lysates from HEK293T cells transfected with RC220518 using transfection reagent MegaTran 2.0 (Cat# [TT210002]).