

Product datasheet for **RC220507**

KLHDC9 (NM_001007255) Human Tagged ORF Clone

Product data:

Product Type: Expression Plasmids
Product Name: KLHDC9 (NM_001007255) Human Tagged ORF Clone
Tag: Myc-DDK
Symbol: KLHDC9
Synonyms: KARCA1
Mammalian Cell Selection: Neomycin
Vector: pCMV6-Entry (PS100001)
E. coli Selection: Kanamycin (25 ug/mL)
ORF Nucleotide Sequence: >RC220507 representing NM_001007255
Red=Cloning site Blue=ORF Green=Tags(s)

TTTTGTAATACGACTCACTATAGGGCGGCCGGAATTCGTCGACTGGATCCGGTACCGAGGAGATCTGCC
GCC**CGATCGCC**

ATGGCGGTGGCCGTGCCCGGGTGGGCGCAGGCTCAGGCTGGGCTGGAGGCCAGTGGCGGGGACG
CGCTTTTGGCTAGAGCTTCCATTCATGCACCGAACTGCGGGGACGGTTCTATCTCGTAGGTGGTCTCCT
AGCAGGAGGAGCGAGAGAGCCAGCAGCGATACGGTGGTTTTCGACCCAGCTAGGGGCCAGGCCGTACGA
TTGGGAGCCCGGGCAGCCCCCGCAGTCACCACGACGCGGCACCCGTGGACGGCGTTGGCTCTGCG
TGGTGGGCGGCTGGGACGGTCTCGCCGCTTGGCCACAGTGACCGCACTGGACACAGAGCGCGGTGTGTG
GGAGGCGTGGACAGGGACCCCTGGTGAATGCCCCCGCGGCCTCAGTGTGACACCTGCACCCGAATC
TCTGACCGAGAGCTGCAGGTGGCTGGCCGGGAGGGCGGTATCCACACTCAGCGACGCTATGGAAGCATCT
ACACATTAAGGCTGGACCCAGCGCCCGCACCTATTGCTACAAGCAAGAAGGCTGCCACACAGCCTCAGC
CTCAGGCTCACTGTGCGGCCCTGCTCAAACCTCTGGACCCATCCAGGTCATCAGCTATTGCTCTTTGGA
GGTTGCAACTTAGCTGAACCAGAAGTAGCTGGCATTGGAGTCATGGGAAAATTAAGTCCTTTCTTTCTC
CCCAAGGAGGAACCACCTGTTGCTCCTCATTTGATGGAACAGCTTGAAGGCTTGTGAGCAGTGGGCAGG
GGTCCCAGAAGGGGCCCATGGACTACGGCATCACTCATGTTCTGTGGTGGGCCCTTTGCTGTGCTGTT
TGGTGGAGAACTCTGACCAGAGC

**ACGCGTACGCGGGCGCTCGAGCAGAAACTCATCTCAGAAGAGGATCTGGCAGCAAATGATATCCTGGATT
ACAAGGATGACGACGATAAGGTTTAA**



[View online »](#)

Protein Sequence: >RC220507 representing NM_001007255
Red=Cloning site Green=Tags(s)

MAVAVPPGRAAGSGWAWRPVARDALLARAFHSCTELRGRFYLVGGLLAGGAREPSSDVTVFDPARGQAVR
 LGARGSPPRSHHDAAPVDGRWLCVVGWDGSRRLATVTALDTERGVWEAWTGTGDCPPAGLSSHTCTRI
 SDRELQVAGREGGIHTQRRYGSYTLRLDPSARTYCYKQEGCHTASRSGHCAALLQTPGPHPGHQLLLF
 GCNLAPEVAGHWSHGKIKSFLSPQGGTCCSSFDTACKACEQWAGVPEGAPWTTASLMFCGRALCCA
 WWRNSDQS

TRTRPLEQKLISEEDLAANDILDYKDDDDKV

Chromatograms: https://cdn.origene.com/chromatograms/mk8049_f10.zip

Restriction Sites: SgfI-MluI

Cloning Scheme:



ACCN: NM_001007255

ORF Size: 864 bp

OTI Disclaimer: The molecular sequence of this clone aligns with the gene accession number as a point of reference only. However, individual transcript sequences of the same gene can differ through naturally occurring variations (e.g. polymorphisms), each with its own valid existence. This clone is substantially in agreement with the reference, but a complete review of all prevailing variants is recommended prior to use. [More info](#)

OTI Annotation: This clone was engineered to express the complete ORF with an expression tag. Expression varies depending on the nature of the gene.

Components: The ORF clone is ion-exchange column purified and shipped in a 2D barcoded Matrix tube containing 10ug of transfection-ready, dried plasmid DNA (reconstitute with 100 ul of water).

Reconstitution Method:

1. Centrifuge at 5,000xg for 5min.
2. Carefully open the tube and add 100ul of sterile water to dissolve the DNA.
3. Close the tube and incubate for 10 minutes at room temperature.
4. Briefly vortex the tube and then do a quick spin (less than 5000xg) to concentrate the liquid at the bottom.
5. Store the suspended plasmid at -20°C. The DNA is stable for at least one year from date of shipping when stored at -20°C.

Note: Plasmids are not sterile. For experiments where strict sterility is required, filtration with 0.22um filter is required.

RefSeq: [NM_001007255.3](#)

RefSeq Size: 1375 bp

RefSeq ORF: 867 bp

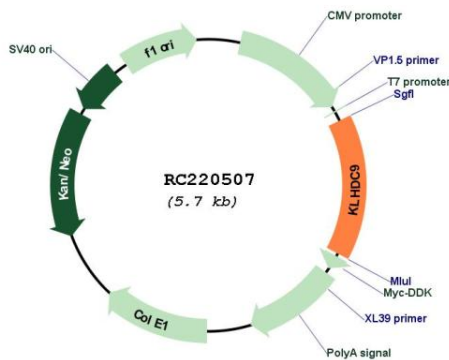
Locus ID: 126823

UniProt ID: [Q8NEP7](#)

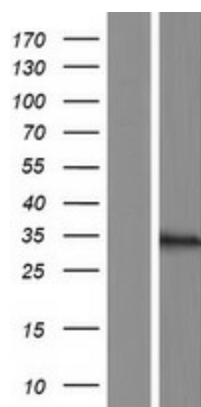
Cytogenetics: 1q23.3

MW: 30.5 kDa

Product images:



Circular map for RC220507



Western blot validation of overexpression lysate (Cat# [LY423473]) using anti-DDK antibody (Cat# [TA50011-100]). Left: Cell lysates from untransfected HEK293T cells; Right: Cell lysates from HEK293T cells transfected with RC220507 using transfection reagent MegaTran 2.0 (Cat# [TT210002]).