

Product datasheet for RC220506

NrCAM (NM_001037132) Human Tagged ORF Clone

Product data:

Product Type:	Expression Plasmids
Product Name:	NrCAM (NM_001037132) Human Tagged ORF Clone
Tag:	Myc-DDK
Symbol:	NRCAM
Mammalian Cell Selection:	Neomycin
Vector:	pCMV6-Entry (PS100001)
E. coli Selection:	Kanamycin (25 ug/mL)
ORF Nucleotide Sequence:	>RC220506 representing NM_001037132 Red=Cloning site Blue=ORF Green=Tags(s)

TTTTGTAATACGACTCACTATAGGGCGGCCGGGAATTCGTCGACTGGATCCGGTACCGAGGAGATCTGCC
GCC**CGATCGCC**

ATGCAGCTTAAAATAATGCCGAAAAGAAGCGCTTATCTGCGGGCAGAGTGCCCTGATTCTCTTCTGT
GCCAGATGATTAGTGCCTGGAAGTACCTCTTGATCCAAAACCTCTTGAAGACTTGGTACAGCCTCCAAC
CATCACCAACAGTCTCCAAAAGATTACATTATTGACCCTCGGGAGAATATTGTAATCCAGTGTGAAGCC
AAAGGAAACCGCCCCAAGCTTTTCTGGACCGTAATGGGACTCATTTTGACATCGATAAAGACCCTC
TGGTCACCATGAAGCCTGGCACAGGAACGCTCATAATTAACATCATGAGCGAAGGAAAGCTGAGACCTA
TGAAGGAGTCTATCAGTGTACAGCAAGGAACGAACGCGGAGTGCAGTTTCTAATAACATTGTTGTCGCG
CCATCCAGATCACCAATTGTGGACCAAAGAAAACCTTGAACCAATCACACTTCAAAGTGGTCACTTTAG
TACTTCCCTGCAGACCCCAATTGGATTACCACCACCTATAATATTTGGATGGATAATTCTTTCAAAG
ACTTCCACAAAGTGAGAGAGTTTCTCAAGGTTTGAATGGGGACCTTTATTTTCCAATGCCTCCCAGAG
GACACCCGCGAAGACTATATCTGTTATGCTAGATTTAATCATACTCAAACCATACAGCAGAAGCAACCTA
TTTCTGTGAAGGTGATTTCAAGTGAAGGAGGACCAACATTTTAACTCCAGAAGGCAATGCAAGTAACAA
GAGGAATTAAGAGGAAATGTGCTTTCACCTGGAGTGCATTGCAGAAGGACTGCCTACCCCAATTATTTACT
GGGCAAAGGAAGATGGAATGCTACCCAAAACAGGACAGTTTATAAGAATTTGAGAAAACCTTGCAGAT
CATTATGTTTTCAGAAGCAGACTCTGAAATTACCAATGTATAGCAAAAACGCATTAGGAGCCATCCAC
CATACCATTTCTGTTAGAGTTAAAGCGGCTCCATACTGGATCACAGCCCCCTAAAATCTTGTGCTGTCCC
CAGGAGAGGATGGGACCTTGATCTGCAGAGCTAATGGCAACCCCAACCCAGAATTAGCTGGTTAACAAA
TGGAGTCCCAATAGAAATGGCCCTGATGACCCAGCAGAAAAATAGATGGCGATACCATTATTTTTTCA
AATGTTCAAGAAAGATCAAGTGCAGTCTATCAGTGAATGCCTCTAATGAATATGGATATTTACTGGCAA
ACGCATTTGTAATGTGCTGGCTGAGCCACCACGAATCCTCACACCTGCAAAACACTCTACCAGGTCAT
TGCAAACAGGCCCTGCTTTACTAGACTGTGCCTTTTGGGTCTCCTCTCCCAACCATCGAGTGGTTAAA
GGAGCTAAAGGAAGTGCCTTTCATGAAGATATTTATGTTTTACATGAAAATGGAACCTTTGAAAATTCCTG
TGGCCAAAAGGACAGTACAGGAACCTTACGTGTGTTGCAAGGAATAAATTAGGGATGGCGAAGAAATGA



[View online »](#)

AGTTCACTTAGAAATCAAAGATCCTACATGGATCGTTAAACAGCCGAATATGCAGTTGTGCAAAGAGGG
AGCATGGTGCCTTTGAATGCAAAGTGAACATGATCACACCTTATCCCTCACTGTCTGTGGTGAAGG
ACAACAGGGAAGTCCCAGTGTAAAGGTTCACTGTTGACAAGGATCATCTAGTGGTAGCTGATGTCAG
TGACGATGACAGCGGGACCTACACGTGTGTGGCCAACACCACTCTGGACAGCGTCTCCGCCAGCGTGTG
CTTAGCGTTGTTGCTCTACTCCAACCTCAGCTCCCGTTACGATGTCCCAAATCCTCCCTTTGACTTAG
AACTGACAGATCAACTTGACAAAAGTGTTCAGCTGTCTGGACCCAGGCGATGACAACAATAGCCCCAT
TACAAAATTCATCATCGAATATGAAGATGCAATGCACAAGCCAGGCTGTGGCACCACCAAACTGAAGTT
TCTGGAACACAGACCACAGCCAGCTGAAGCTGTCTCTTACGTGAACTACTCCTTCCGCGTGATGGCAG
TGAACAGCATTGGGAAGAGCTTGCCACGAGGCGTCTGAGCAGTATTTGACGAAAGCCTCAGAACCAGA
TAAAAACCCACAGCTGTGGAAGGACTGGGATCAGAGCCTGATAATTTGGTGATTACGTGGAAGCCCTTG
AATGGTTTCGAATCTAATGGGCCAGGCCTCAGTACAAAGTTAGCTGGCGCCAGAAAAGTGGTGATGATG
AATGGACATCTGTGGTTGTGGCAAATGTATCCAAATATATTGTCTCAGGCACGCCAACCTTTGTTCCATA
CCTGATCAAAGTTCAGGCCCTGAATGACATGGGGTTTGCCTCCGAGCCAGCTGTAGTCATGGGACATTCT
GGAGAAGACCTCCAATGGTGGCTCCTGGGAACGTGCGTGTGAATGGTGAACAGTACCTTAGCCGAGG
TGCACTGGGACCCAGTACCTCTGAAAAGCATCCGAGGACACCTACAAGGCTATCGGATTTACTATTGGAA
GACCCAGAGTTTACTTAAAGAAAACAGAGCTCACATTGAGAAAAAGATCCTCACCTTCCAAGGCAGCAAG
ACTCATGGCATGTTGCCGGGGCTAGAGCCCTTAGCCACTACACACTGAATGTCCGAGTGGTCAATGGGA
AAGGGGAGGGCCAGCCAGCCCTGACAGAGTCTTAACTCCAGAAGGAGTCCCAGTGCCTCCCTCGTC
TTTGAAGATTGTGAATCCAACACTGGACTCTCTCACTTTGGAATGGGATCCACCGAGCCACCCGAATGGC
ATTTTGACAGAGTACACCTTAAAGTATCAGCCAATTAACAGCACACATGAATTAGGCCCTCTGGTAGATT
TGAAAATTCCTGCCAACAAAGACACGGTGGACTTTAAAAATTTAAATTCAGCACTCGATATAAGTTTTA
TTTCTATGCACAAACATCAGCAGGATCAGGAAGTCAAATTACAGAGGAAGCAGTAAACAACCTGTGGATGAA
GCTGGTATTCTTCCACCTGATGTAGGTGCAGGCAAAGTTCAAGCAGTAAATCCCAGGATCAGCAATCTTA
CTGCTGCAGCTGCTGAGACCTATGCCAATATCAGTTGGGAATATGAGGGACCAGAGCATGTGAACCTTTTA
TGTTGAATATGGTGTAGCAGGCAGCAAAGAAGAATGGAGAAAAGAAATTGTAATGGTTCTCGGAGCTTC
TTTGGGTTAAAGGGTCTAATGCCAGGAACAGCATACAAAGTTCGAGTTGGTGTCTGTGGGGACTCTGGTT
TTGTGAGTTCAGAGGATGTGTTGAGACAGGCCAGCGATGGCAAGCCGGCAGGTGGATATTGCAACTCA
GGGCTGGTTCATTGGTCTGATGTGTGCTGTTGCTCTCCTTATCTTAATTTTGTGATTGTTTGTTCATC
AGAAGAAACAAGGGTGGTAAATATCCAGTTAAAGAAAAGGAAGATGCCCATGCTGACCCTGAAATCCAGC
CTATGAAGGAAGATGATGGGACATTTGGAGAATACAGTGTGCAGAAGACCACAAGCCTTTGAAAAAAGG
AAGTCGAACCTCTCAGACAGGACTGTGAAAAAGAAGATAGTGACGACAGCCTAGTTGACTATGGAGAA
GGGGTTAATGGCCAGTTC AATGAGGATGGCTCCTTTATTGGACAATACAGTGGTAAGAAAAGAGAAAGAGC
CGGCTGAAGGAAACGAAAGCTCAGAGGCACCTTCTCTGTCAACGCCATGAATTCCTTTGTT

ACGCGTACGCGGCCGCTCGAGCAGAACTCATCTCAGAAGAGGATCTGGCAGCAATGATATCCTGGATT
ACAAGGATGACGACGATAAGGTTTAA

Protein Sequence: >RC220506 representing NM_001037132
 Red=Cloning site Green=Tags(s)

MQLKIMPKKKRLSAGRVPLILFLCQMISALEVPLDPKLLLEDLVQPPTITQQSPKDYIIDPRENIVIQCEA
 KGKPPPSFSWTRNGTHFDIDKDLVMTKPGTGLIINIMSEGKAETYEYVYQCTARNERGAAVSNNIVVR
 PSRSPLWTKLEPITLQSGQSLVPCRPPIGLPPPIIFWMDNSFQRLPQSERSVQGLNGDLYFSNVLPE
 DTREDYICYARFNHTQTIQQKQPI SVKVISVDELNDTIAANLSDTEFYGAKSSRRPPTFLTPEGNASNK
 EELRGNVLSLECIAEGLPTPIIYWAKEDGMLPKNRTVYKNFEKTLQIIHVSEADSGNYQCI AKNALGAIH
 HTISVRVKAAPYWITAPQNLVLSPGEDGLICRANGNPKPRISWLTNGVPIEIA PDDPSRKIDGDTIIFS
 NVQERSAVYQCNASNEYGYLLANAFVNVLAEP RPRILTPANTLYQVIANRPALLDCAFFGSPLPTIEWFK
 GAKGSALHEDIYVLHENGTL EIPVAQKDGSTGYTCVARNKLGMAKNEVHLEIKDPTWIVKQPEYAVVQRG
 SMVSFECKVKHDHTLSLTVLWLDKNRELPSDERFTVDKDHLVVADVSDDDSGTYTCVANTLDSVSASAV
 LSVVAPTPTAPVYDVPNPPFDLELTDQLDKSVQLSWTPGDDNNSPITKFIIEYEDAMHKPGLWHHQTVEV
 SGTQTTAQLKLSPVVNSFRVMVNSIGKSLPSEASEQYLTKASEPDKNPTAVEGLGSEPDNLVITWKPL
 NGFESNGPGLQYKYSWRQKDGDEWTSVVVANVSKYIVSGTPTFPVYLIKVQALNDMGFAPEPAVVMGHS
 GEDLPMVAPGNVRVNVNSTLAEVHWDPVPLKSI RGHLLQGYRIYYWKTQSSSKRNRRIIEKKILTQFGSK
 THGMLPGLPEF SHYTLNVRVVNGKGE GPASPDRVFNTPEGVPSAPSSLKIVNPTLDSLTL EWDPPSHPNG
 ILTEYTLKYQPINSTHELGPLVDLKIPANKTRWTLKLNLFSTRYKFYFYAQT SAGSGSQITEEAVTTVDE
 AGILPPDVGAGKVQAVNPRISNL TAAAAEYANISWEYEGPEHVNFYVEYGVAGSKEEWRKEIVNGSRSF
 FGLKGLMPGTAYKVRVAVGDSGFVSS EDDVFETGPAMASRQVDIATQGWFI GLMCAVALLILILLIVCFI
 RRNKGKYPVKEKEDAHADPEIQPMKEDDGT FGEYSDAEDHKPLKKSRTPSDRTVKKEDSDDSLVDYGE
 GVNGQFNEDGSF IGQYSGKKEKEPAEGNESSEAPSPVAMNSFV

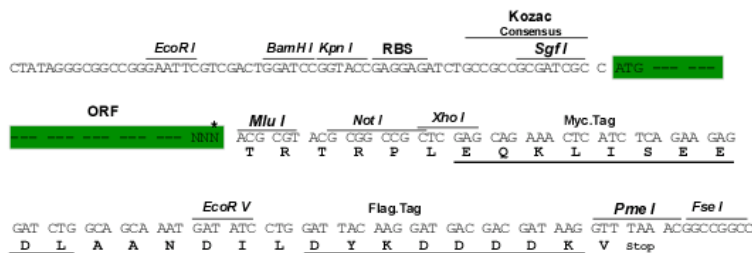
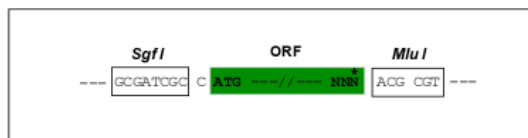
TRTRPLEQKLISEEDLAANDILDYKDDDDKV

Chromatograms: https://cdn.origene.com/chromatograms/ja2442_g08.zip

Restriction Sites: Sgfl-MluI

Cloning Scheme:

Cloning sites used for ORF Shuttling:



* The last codon before the Stop codon of the ORF

ACCN: NM_001037132

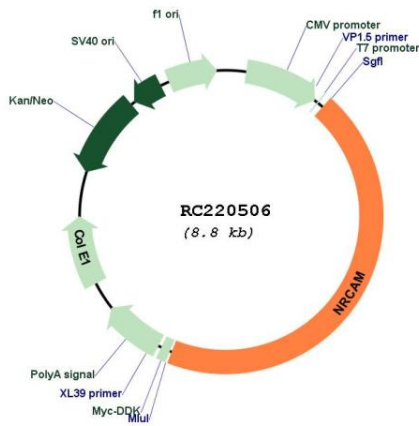
ORF Size: 3912 bp

OTI Disclaimer:	<p>Due to the inherent nature of this plasmid, standard methods to replicate additional amounts of DNA in E. coli are highly likely to result in mutations and/or rearrangements. Therefore, OriGene does not guarantee the capability to replicate this plasmid DNA. Additional amounts of DNA can be purchased from OriGene with batch-specific, full-sequence verification at a reduced cost. Please contact our customer care team at custsupport@origene.com or by calling 301.340.3188 option 3 for pricing and delivery.</p> <p>The molecular sequence of this clone aligns with the gene accession number as a point of reference only. However, individual transcript sequences of the same gene can differ through naturally occurring variations (e.g. polymorphisms), each with its own valid existence. This clone is substantially in agreement with the reference, but a complete review of all prevailing variants is recommended prior to use. More info</p>
OTI Annotation:	This clone was engineered to express the complete ORF with an expression tag. Expression varies depending on the nature of the gene.
Components:	The ORF clone is ion-exchange column purified and shipped in a 2D barcoded Matrix tube containing 10ug of transfection-ready, dried plasmid DNA (reconstitute with 100 ul of water).
Reconstitution Method:	<ol style="list-style-type: none"> 1. Centrifuge at 5,000xg for 5min. 2. Carefully open the tube and add 100ul of sterile water to dissolve the DNA. 3. Close the tube and incubate for 10 minutes at room temperature. 4. Briefly vortex the tube and then do a quick spin (less than 5000xg) to concentrate the liquid at the bottom. 5. Store the suspended plasmid at -20°C. The DNA is stable for at least one year from date of shipping when stored at -20°C.
RefSeq:	NM_001037132.4
RefSeq Size:	6305 bp
RefSeq ORF:	3915 bp
Locus ID:	4897
UniProt ID:	Q92823
Cytogenetics:	7q31.1
Protein Families:	Druggable Genome, Transmembrane
Protein Pathways:	Cell adhesion molecules (CAMs)
MW:	144.3 kDa

Gene Summary:

Cell adhesion molecules (CAMs) are members of the immunoglobulin superfamily. This gene encodes a neuronal cell adhesion molecule with multiple immunoglobulin-like C2-type domains and fibronectin type-III domains. This ankyrin-binding protein is involved in neuron-neuron adhesion and promotes directional signaling during axonal cone growth. This gene is also expressed in non-neural tissues and may play a general role in cell-cell communication via signaling from its intracellular domain to the actin cytoskeleton during directional cell migration. Allelic variants of this gene have been associated with autism and addiction vulnerability. Alternative splicing results in multiple transcript variants encoding different isoforms. [provided by RefSeq, Jul 2008]

Product images:



Circular map for RC220506