

Product datasheet for RC220502

Collagen XVII (COL17A1) (NM_000494) Human Tagged ORF Clone

Product data:

Product Type:	Expression Plasmids
Product Name:	Collagen XVII (COL17A1) (NM_000494) Human Tagged ORF Clone
Tag:	Myc-DDK
Symbol:	Collagen XVII
Synonyms:	BA16H23.2; BP180; BPA-2; BPAG2; EBR2A; ERED; JEB-I; LAD-1
Mammalian Cell Selection:	Neomycin
Vector:	pCMV6-Entry (PS100001)
E. coli Selection:	Kanamycin (25 ug/mL)
ORF Nucleotide Sequence:	>RC220502 representing NM_000494 Red=Cloning site Blue=ORF Green=Tags(s)

TTTTGTAATACGACTCACTATAGGGCGGCCGGAATTCGTCGACTGGATCCGGTACCGAGGAGATCTGCC
GCC**CGATCGCC**

ATGGATGTAACCAAGAAAAACAACGAGATGGAAGTCAAGTCACTGAGAGAATTGCTCACTGAAACAGTAA
CCACAAGACTTACATCCTTACCACCAAAAGCGGGACCAGCAATGGCTATGCTAAAACAGCCTCTCTTGG
TGGAGGGAGCCGGCTGGAGAAACAAGCCTGACTCATGGCAGCAGCGGCTACATAAACTCAACTGGAAGC
ACACGAGGCCATGCCTCCACCTTAGTTACAGGAGGGCTCACTCACCTGCCTCCACTCTGCCAACTCCC
CAGGCTCAACCTTTGAAAGGAAAACCTCAGTTACCCGCCATGCGTATGAAGGGAGCTCCAGTGGCAACTC
TTCTCCGGAGTACCCTCGGAAGGAATTTGCATCTTCTCAACCAGAGGACGGAGTCAAACACGAGAGAGT
GAAATTCGAGTTCGACTGCAGAGTGCCTCCCATCCACCCGATGGACAGAATTGGATGATGTTAAGCGTT
TGCTCAAGGGGAGTGCATCGGCAAGTGTGAGCCCCACCCGGAATTCCTCCAACACACTCCCCATCCCCAA
GAAAGGCACTGTGGAGACCAAAATTGTGACAGCGAGCTCCAGTCGGTGTGAGGCACCTACGATGCAATG
ATCCTGGATGCCAACCTTCCCTCCCATGTGTGGTCTCCACCTGCCCGGGGGTCTCCATGGGGACCT
ATCACAACAACATGACAACCCAGAGTCACTCCCTCAACCAATGCCTACTCTGCGGGATCAGTCTT
CGGAGTTCAAACAACATGGCGTCTGTCACCACTTTGACCCTGGACTCAGCACATCCTCTCAGTG
TTTGGCATGCAGAACAATCTGGCCCCAGCTTGACCACCCTGTCCATGGCACCACCACCTTCCACAG
CATATGGGGTGAAGAAAACATGCCCCAGAGTCTGCGGCTGTGAACACTGGCGTTTCCACTCCGCGCGC
CTGCACCACAAGTGTGCAGAGCGATGACCTTTTGCACAAGGACTGCAAGTTCTGATCCTAGAGAAAGAC
AACACACCTGCTAAGAAGGAGATGGAGCTGCTCATCATGACCAAGGACAGCGGGAAGGTCTTTACAGCCT
CCCCTGCCAGCATCGCTGCAACTTCTTTTTCAGAAGACACCCTAAAAAAGAAAAGCAAGCTGCCTACAA
TGCTGACTCAGGCCTAAAAGCCGAAGCTAATGGAGACCTGAAGACTGTGTCCACAAGGGCAAGACCACC
ACTGCAGATATCCACAGTACAGCAGCAGTGGTGGTGGTGGCAGTGGAGGAGTGGCGGTGTTGGTGGCG
CTGGCGGGCCCTTGGGGACCAGCGCCAGCCTGGTGGCCCTGCGGCTCCTGCTGCAGCTGGTGAAGTG
GCTGCTGGGCTGCTGCTCACCTGGCTGCTACTCTGGGGCTGCTCTTCGGCCTATTGCTCTGGCGGAG



[View online >](#)

GAGGTGAGGAAGCTGAAGGCGCGTGTGGATGAGCTGGAGAGGATCAGGAGGAGCATACTGCCCTATGGGG
 ACAGCATGGATAGAATAGAAAAGGACCGCCTCCAGGGCATGGCACCCGCGGGGAGCAGACCTGGACAA
 AATTGGGCTGCACAGTGACAGCCAGGAGGAGCTCTGGATGTTCTGTGAGGAAGAAGCTAATGATGGAACAG
 GAAAATGGAAATCTCCGAGGAAGCCCTGGCCCTAAAGGTGACATGGGAAGTCCAGGCCCTAAAGGAGATC
 GAGGGTTCCTGGGACTCCAGGTATCCCTGGGCCCTTGGGCCACCCAGGTCCACAAGGACCAAAGGGTCA
 AAAAGGCAGCGTGGGAGATCTGGCATGGAAGGCCCATGGGCCAGAGAGGGCGAGAAGGCCCATGGGA
 CCTCGTGGTGAGGCAGGGCCTCCTGGATCTGGAGAGAAAGGGGAAAGAGGGGCTCTGTGAAACCAGGT
 CTCATGGCCACCTGGTGTCCAGGTTCTGTGGGTCCCAAAGGTTCCAGCGGCTCTCTGGCCACAGGG
 CCCTCCAGGTCTGTAGGTCTCCAAGGGCTCCAGGTGAAGTAGGACTTCTGGTGTCAAAGGTGACAAA
 GGACAGTGGGACCACCAGGACCAAAGGTGACCAGGGTGAGAAAGGACCTCGAGGCCTCACAGGCGAGC
 CTGGCATGAGAGGTTTGCCTGGTGTGTTGGTGTGAGCCCGGGGCTAAAGGAGCAATGGGTCTGTGGCC
 AGACGGACACCAAGGCCAAGAGGTGAACAAGGTCTTACTGGGATGCCTGGAATCCGTGGCCACCAGGA
 CCTTCTGGAGACCCAGGAAAGCCAGGTCTCACAGGACCCAGGGACCTCAGGGACTTCCCGTACCCCTG
 GCCGACCAGGAATAAAAGGTGAACCAGGAGCTCCAGGCAAGATCGTGACTTCGGAGGGTTCATCGATGCT
 CACTGTCCAGGCCCCAGGACCTCCTGGAGCCATGGGACCCAGGACCTCCAGGTGCCCCAGGCCCT
 GCCGGCCAGCTGGTCTCCAGGACATCAAGAAGTCTTAATTTACAAGGTCCCCAGGCCACCCGGCC
 CACGCGGGCCACCAGGGCCTTCCATTCCAGGCCACCAGGACCCGAGGCCACCAGGGGAGGGTTTGC
 AGGCCACCAGGCCACCAGGATCGTTCCTGTCCAACCTCAGAAACCTTCTCTCCGGCCCCCAGGCCCA
 CCTGGCCCCCAGGTCCCAAGGGAGACCAAGGTCCCCAGGCCCCAGAGGACCAAGGCGAGCAAGGCC
 TCCCAGGTTTCTCAACCTCAGGGTCCAGTCTTTCCGACTCAACCTTCCAGGGACCCAGGCCACCTGG
 CCCCCAGGACCAAAAGGTGACAAAGGTGATCCGGGTGTCCAGGGGCTTTGGCATTCTAGTGGTCTCT
 TCTGAAGGGGATCATCAAGTACCATGTACGTGTACAGCCCGCCAGGGCCCCCTGGGCCCTGGCCCTC
 CGGGCTCATCAGCAGCTCTGGCCAGGAGATTGACAGTACATCTCTGAGTACATGCAGATGACAGCAT
 TAGATCTTACCTATCCGGAGTTCAGGGTCCCCAGGCCACCTGGTCCCCAGGACCTGTACCACCATC
 ACAGGCGAGACTTTCGACTACTCAGAGCTGGAAGCCACGTTGTGAGCTACTTACGGACTTCGGGTACG
 GTGTCAGTCTGTCTCGTCTCCATCTCTTCTGAAGACATCCTGGCTGTGCTGCAGCGGGATGACGTGCG
 TCAGTACCTACGTAGTACTTGTGGGCCCTCGGGTCCGCCAGGGCCACCAGGAGCCAGTGGAGATGGG
 TCCCTCTGTCTTGGACTATGCAGAGCTGAGTAGTGCATTCTCAGCTACATGTCGAGTCTCTGGGATCA
 GCATTGGGCTTCTGGTCCCCGGGGCCCCCTGGCTTGGCGGAACCTCCTATGAGGAGCTCCTCTCCTT
 GCTGCGAGGTCTGAATTCAGAGGCATCGTTGGACCCAGGTCCCCGGGTCCACCAGGATCCCAGGC
 AATGTGTGGTCCAGCATCAGCGTGGAGGACCTCTCGTCTTACTTACATACTGCCGCTTGTATTATCC
 CAGGCCCTCCAGGACCTCCTGGTCCCCAGGGCCTCGAGGGCCCCGGGTGTCTCAGGAGCCTGGCAAC
 CTATGCAGCTGAAAACAGCGACAGCTTCCGGAGCGAGCTGATCAGCTACCTCACAAGTCTGATGTGCGC
 AGCTTCATTGTTGGCCCCCAGGCCCTCCTGGGCCGAGGGACCCCTGGGGACAGCCGCTCCTGTCCA
 CGGATGCCTCCCACAGTCGGGGTAGCAGCTCCTCCTCACAGCTCATCTGTGAGCGGGGAGCTCCTA
 CAGCTCTTCCATGAGCACAGGAGGAGGTGGTGCAGGCTCCTGGGTGCAGGCGGTGCCTTTGGTGAAGCT
 GCAGGAGACAGGGGTCCCTATGGCACTGACATCGGCCAGGCGGAGGCTATGGGGCAGCAGCAGAAGGGC
 GCATGTATGCTGGCAATGGCGGACTATTGGGAGCTGACTTTGCTGGAGATCTGGATTACAATGAGCTGGC
 TGTGAGGGTGTGAGAGCATGCAGCGTCAGGGCCTACTGCAAGGGATGGCCTACTGTCCAGGGCCCCA
 CCAGGCCAGCCTGGGCCACAGGGCCACCCGGCATCAGCAAGGTTCTCTGCTACAGCAACGTGACTG
 CGGACCTCATGGACTTCTTCAAACCTTATGGAGCCATTCAAGGACCCCTGGGCAAAAAGGAGAGATGGG
 CACTCCAGGACCAAAGGTGACAGGGCCCTGCTGGGCCACCAGGTATCCTGGGCCACCTGGCCCTCGA
 GGACACAAAGGGAGAAAAGGAGACAAAGGTGACCAAGTCTATGCTGGGCGGAGAAGGAGAAGATTG
 CTGTCAAGCCG

ACGCGTACGCGGCCGCTCGAGCAGAACTCATCTCAGAAGAGGATCTGGCAGCAATGATATCCTGGATT
 ACAAGGATGACGACGATAAGGTTTAA

Protein Sequence: >RC220502 representing NM_000494
 Red=Cloning site Green=Tags(s)

```
MDVTKKNKRDGTEVTERIVTETVTRLTSLPPKGGTSNGYAKTASLGGGSRLKQSLTHGSSGYINSTGS
TRGHASTSSYRRAHSPASTLPNSPGSTFERKTHVTRHAYEGSSSGNSSPEYRKEFASSTRGRSQTRES
EIRVRLQASASPSTRWTELDDVKRLLKGSRSASVSPTRNSSNTLPKPKGTVETKIIVTASSQSVSGTYDAM
ILDANLPSHVWSSSTLPAGSSMGTYHNNMTTQSSLLNTNAYSAGSVFGVPPNMMASCSPTLHPGLSTSSV
FGMQNNLAPSLTTLSHGTTTTSTAYGVKKNMPQSPAAVNTGVSTSAACCTSVQSDLLHKDCKFLILEKD
NTPAKKEMELLIMTKDSGVFTASPASIAATSFSEDTLKKKQAAYNADSGLKAEANGDLKTVSTKGKTT
TADIHSYSSSGGGGGGGGGVGGAGGPPWGPAPAWPCGSCCSWWKWLGLLLTWLLLLGLLFLGLIALAE
EVRKLRVDELERIRRSILPYGDSMDRIEKDRLQGMAPAAGADLDKIGLHSDSQEELWMFVRKLMMEQ
ENGLRGSPPGPKGDMGSPGPKGDRGFPPTGPIGPLGHPGPQPKGQKGSVGDGMEGPMQREGPMG
PRGEAGPPGSGEKGERGAAGEGPHGPPGVPVGSVGPKGSSGSPGQPPGPVGLQGLRGEVGLPGVKGDK
GPVGGPKGQGEKGRPLTGEPMRGLPGAVGEPGAKGAMGAPGDGHQGRGEQGLTGMPGIRGPPG
PSGDPGKPLTGPQGPQLPGTPGRPGIKGEPGAPGKIVTSEGSSMLTVPGPPGPPGAMGPPGPPGAPG
AGPAGLPQHVELNLQGPVPPGPRGPPGPSIPGPPGPRGPPGELPGPPGPPGFSLSNSETFLSGPPG
PGPPGPKGDQGPGRGHQGEQGLPGFSTSGSSSFFGLNLQGPVPPGPPGQPKGDKGDPVPGALGIPSGP
SEGGSSSTMYVSGPPGPPGPPGPGSISSSSQEIQYI SEYMQSDSIRSYL SGVQGPVPPGPPGPVTTI
TGETFDYSELASHVSYLRTSGYVSLFSSSISSEDLAVLQRDDVRYLRQYLMGPRGPPGPPGASGDG
SLLSLDYAELSSRILSYMSSSGISIGLPGPPGPPGLPGTSYEELLSLLRGSEFRGIVGPPGPPGPPGIPG
NVWSSISVEDLSSYLHTAGLSFIPGPPGPPGPPGPRGPPGVSGALATYAAENSDSFRSELISYLTSPDVR
SFIVGPPGPPGPPGPPGDSRLLSTDASHSRGSSSSSHSSSVRRGSSYSSSMSTGGGGAGSLGAGGAFGEA
AGDRGPYGTDIGPGGYAAAEGMYAGNGLLGADFAGDLYNELAVRSESMQRQGLLQGMAYTVQGP
PGQPGQPPGPIKVFSAYSNVTADLMDFFQTYGAIQGPVQKQKGMGTPGPKGDRGPAGPPGHPGPPGPR
GHKGEKGDQVYAGRRRRRSIAVKP
```

TRTRPLEQKLISEEDLAANDILDYKDDDDKV

Chromatograms: https://cdn.origene.com/chromatograms/mk6259_g09.zip

Restriction Sites: SgfI-MluI

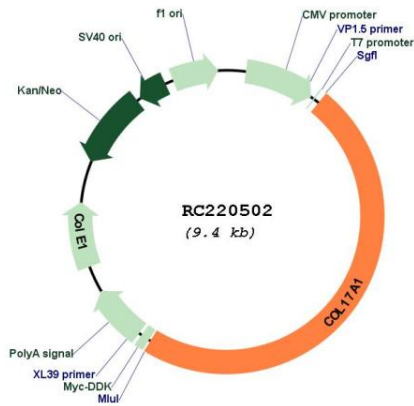
Cloning Scheme:



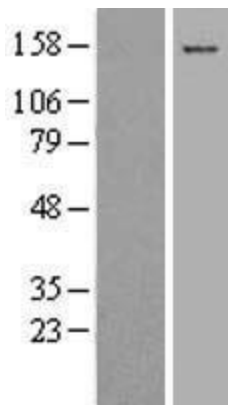
ACCN: NM_000494

ORF Size:	4491 bp
OTI Disclaimer:	The molecular sequence of this clone aligns with the gene accession number as a point of reference only. However, individual transcript sequences of the same gene can differ through naturally occurring variations (e.g. polymorphisms), each with its own valid existence. This clone is substantially in agreement with the reference, but a complete review of all prevailing variants is recommended prior to use. More info
OTI Annotation:	This clone was engineered to express the complete ORF with an expression tag. Expression varies depending on the nature of the gene.
Components:	The ORF clone is ion-exchange column purified and shipped in a 2D barcoded Matrix tube containing 10ug of transfection-ready, dried plasmid DNA (reconstitute with 100 ul of water).
Reconstitution Method:	<ol style="list-style-type: none">1. Centrifuge at 5,000xg for 5min.2. Carefully open the tube and add 100ul of sterile water to dissolve the DNA.3. Close the tube and incubate for 10 minutes at room temperature.4. Briefly vortex the tube and then do a quick spin (less than 5000xg) to concentrate the liquid at the bottom.5. Store the suspended plasmid at -20°C. The DNA is stable for at least one year from date of shipping when stored at -20°C.
RefSeq:	NM_000494.4
RefSeq Size:	5610 bp
RefSeq ORF:	4494 bp
Locus ID:	1308
UniProt ID:	Q9UMD9
Cytogenetics:	10q25.1
Protein Families:	Transmembrane
MW:	150.2 kDa
Gene Summary:	This gene encodes the alpha chain of type XVII collagen. Unlike most collagens, collagen XVII is a transmembrane protein. Collagen XVII is a structural component of hemidesmosomes, multiprotein complexes at the dermal-epidermal basement membrane zone that mediate adhesion of keratinocytes to the underlying membrane. Mutations in this gene are associated with both generalized atrophic benign and junctional epidermolysis bullosa. Two homotrimeric forms of type XVII collagen exist. The full length form is the transmembrane protein. A soluble form, referred to as either ectodomain or LAD-1, is generated by proteolytic processing of the full length form. [provided by RefSeq, Jul 2008]

Product images:



Circular map for RC220502



Western blot validation of overexpression lysate (Cat# [LY424682]) using anti-DDK antibody (Cat# [TA50011-100]). Left: Cell lysates from untransfected HEK293T cells; Right: Cell lysates from HEK293T cells transfected with RC220502 using transfection reagent MegaTran 2.0 (Cat# [TT210002]).