

Product datasheet for **RC220494**

BRCC45 (BRE) (NM_199191) Human Tagged ORF Clone

Product data:

Product Type:	Expression Plasmids
Product Name:	BRCC45 (BRE) (NM_199191) Human Tagged ORF Clone
Tag:	Myc-DDK
Symbol:	BRCC45
Synonyms:	BRCC4; BRCC45; BRE
Mammalian Cell Selection:	Neomycin
Vector:	pCMV6-Entry (PS100001)
E. coli Selection:	Kanamycin (25 ug/mL)
ORF Nucleotide Sequence:	>RC220494 ORF sequence Red=Cloning site Blue=ORF Green=Tags(s)

TTTTGTAATACGACTCACTATAGGGCGCCGGGAATTCGTCGACTGGATCCGGTACCGAGGAGATCTGCC
GCC**CGATCGCC**

ATGTCCCAGAAGTGGCCTTGAACCGAATATCTCCAATGCTCTCCCCTTTCATATCTAGCGTGGTCCGGA
ATGAAAAGTGGGACTGGATGCTACAACTGTTGAGGATAACTGACTTAAAATCTGGCTGCACATCATT
GACTCTGGGCCCAACTGTGACCGATTTAACTGCACATACCATATGCTGGAGAGACATTAAGTGGGAT
ATCATTTTCAATGCCAATACCCAGAAGTGCCTCCGATTTTATCTTTGGAGAAGATGCTGAATCTCTG
CAGACCCCTCAGCTTTCAGAACTTGCCTCCTGGAATCCTTCAAATCCTGAATGTCTTACTTGTGGT
GAAGGAATTGTGCAACAATATACCAATTCCAATGTAGCCGCTCCGGGAGAGCTCCCGCTCATGTTT
GAATACCAGACATTACTGGAGGACACAGTATGGAGAGAACATGGAAATTTATGCTGGGAAAAAACA
ACTGGACTGGTGAATTTTCAGCTCGTTTCTTTGAAAGCTGCCCGTAGATTTTCAGCAATATCCCCACATA
CCTTCTCAAGGATGTAATGAAGACCCTGGAGAAGATGTGGCCCTCCTCTCTGTTAGTTTGGAGCACT
GAAGCCACCCAGGTGTACCCCAAGCTGTACTTGTACCTCGAATTGAGCATGCACCTGGAGGCTCCTCAG
CTCTTCATATCCAGCTTTTCCAGGAGGAGGATGTCTCATTGATTACGTTCTCAAGTATGCCACCTGCT
CACCAACAAGGTGCAGTACGTGATTCAAGGGTATCACAAAAGAAGAGAGTATATTGCTGCTTTTCTCAGT
CACTTTGGCACAGGTGCTGGAATATGATGCAGAAGGCTTACAAAACACTCACTGCTGATGTGGA
AAGATTTTGTCTTGTACACATTGACCTGCCTCTGTTTTTCCCTCGAGACCAGCCAACCTCTCATT
TCAGTCCGTTTATCACTTTACCAACAGTGGACAGCTTTACTCCAGGCCAAAAAATTATCCGTACAGC
CCCAGATGGGATGAAATGAAATGGCCAAAAGAGCAAAGGCTTATTTCAAACCTTTGTCCCTCAGTTCC
AGGAGGCAGCATTGCAATGGAAGCTC

ACGCGTACGCGGCCGCTCGAGCAGAACTCATCTCAGAAGAGGATCTGGCAGCAATGATATCCTGGATT
ACAAGGATGACGACGATAAGGTTTAA



[View online »](#)

Protein Sequence: >RC220494 protein sequence
Red=Cloning site Green=Tags(s)

MSPEVALNRISPMLSPFISSVVRNGKVGLDATNCLRITDLKSGCTSLTPGPNCDRFKLHIPPYAGETLKWD
 IIFNAQYPELPPDFIFGEDAEFLPDPALQNLASWNPSNPECLLLVVKELVQYHQFQCSRLRESSRLMF
 EYQTLLEEPQYGENMEIYAGKKNWTGEFSARFLKLPVDFSNIPTYLLKDVNEDPGEDVALLSVSFEDT
 EATQVYPKLYLSPRIEHALGGSSALHIPAFPPGGCLIDYVPQVCHLLTNKVQYVIQGYHKRREYIAAFLS
 HFGTGVVEYDAEGFTKLTLLLMWKDFCFLVHIDLPLFFPRDQPTLTFQSVYHFTNSGQLYSQAQKNYPYS
 PRWDGNEMAKRAKAYFKTFVPQFQEAFAANGKL

TRTRPLEQKLISEEDLAANDILDYKDDDDKV

Chromatograms: https://cdn.origene.com/chromatograms/mk6300_h12.zip

Restriction Sites: SgfI-MluI

Cloning Scheme:



* The last codon before the Stop codon of the ORF

ACCN: NM_199191

ORF Size: 1149 bp

OTI Disclaimer: The molecular sequence of this clone aligns with the gene accession number as a point of reference only. However, individual transcript sequences of the same gene can differ through naturally occurring variations (e.g. polymorphisms), each with its own valid existence. This clone is substantially in agreement with the reference, but a complete review of all prevailing variants is recommended prior to use. [More info](#)

OTI Annotation: This clone was engineered to express the complete ORF with an expression tag. Expression varies depending on the nature of the gene.

Components: The ORF clone is ion-exchange column purified and shipped in a 2D barcoded Matrix tube containing 10ug of transfection-ready, dried plasmid DNA (reconstitute with 100 ul of water).

Reconstitution Method:

1. Centrifuge at 5,000xg for 5min.
2. Carefully open the tube and add 100ul of sterile water to dissolve the DNA.
3. Close the tube and incubate for 10 minutes at room temperature.
4. Briefly vortex the tube and then do a quick spin (less than 5000xg) to concentrate the liquid at the bottom.
5. Store the suspended plasmid at -20°C. The DNA is stable for at least one year from date of shipping when stored at -20°C.

RefSeq: [NM_199191.3](#)

RefSeq Size: 1804 bp

RefSeq ORF: 1152 bp

Locus ID: 9577

UniProt ID: [Q9NXR7](#)

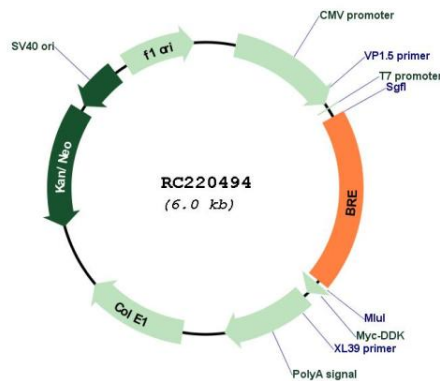
Cytogenetics: 2p23.2

Protein Families: Druggable Genome

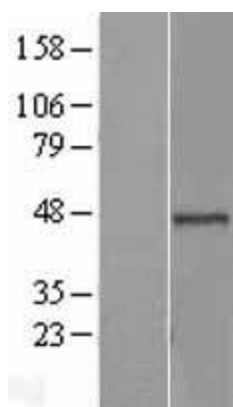
MW: 43.6 kDa

Gene Summary: This gene encodes an anti-apoptotic, death receptor-associated protein that interacts with tumor necrosis factor-receptor-1. The encoded protein acts as an adapter in several protein complexes, including the BRCA1-A complex and the BRISC complex. The BRCA1-A complex possesses ubiquitinase activity and targets sites of double strand DNA breaks, while the BRISC complex exhibits deubiquitinase activity and is involved in mitotic spindle assembly. This gene is upregulated in several types of cancer. [provided by RefSeq, Jun 2016]

Product images:



Circular map for RC220494



Western blot validation of overexpression lysate (Cat# [LY404687]) using anti-DDK antibody (Cat# [TA50011-100]). Left: Cell lysates from untransfected HEK293T cells; Right: Cell lysates from HEK293T cells transfected with RC220494 using transfection reagent MegaTran 2.0 (Cat# [TT210002]).