

Product datasheet for **RC220473**

MAP1LC3A (NM_181509) Human Tagged ORF Clone

Product data:

Product Type: Expression Plasmids
Product Name: MAP1LC3A (NM_181509) Human Tagged ORF Clone
Tag: Myc-DDK
Symbol: MAP1LC3A
Synonyms: ATG8E; LC3; LC3A; MAP1ALC3; MAP1BLC3
Mammalian Cell Selection: Neomycin
Vector: pCMV6-Entry (PS100001)
E. coli Selection: Kanamycin (25 ug/mL)
ORF Nucleotide Sequence: >RC220473 representing NM_181509
Red=Cloning site Blue=ORF Green=Tags(s)

TTTTGTAATACGACTCACTATAGGGCGCCGGGAATTCGTCGACTGGATCCGGTACCGAGGAGATCTGCC
GCC**CGGATCGCC**

ATGAAGATGAGATTCTTCAGTTCTCCATGTGGAAAAGCAGCTGTGGACCCAGCCGACCGCTGTAAGGAGG
TACAGCAGATCCGCGACCAGCACCCAGCAAATCCCGGTGATCATCGAGCGCTACAAGGGTGAGAAGCA
GCTGCCGCTCCTGGACAAGACCAAGTTTTTGGTCCCGGACCATGTCAACATGAGCGAGTTGGTCAAGATC
ATCCGGCGCCGCTGCAGCTGAACCCACGCAGGCCTTCTCCTGCTGGTGAACCAGCACAGCATGGTGA
GTGTGTCCAGCCATCGCGGACATCTACGAGCAGGAGAAAGACGAGGACGGCTTCTCTATATGGTCTA
CGCTCCAGGAAACCTTCGGCTTC

ACGCGTACGCGGCCGCTCGAGCAGAAACTCATCTCAGAAGAGGATCTGGCAGCAAATGATATCCTGGATT
ACAAGGATGACGACGATAAGGTTTAA

Protein Sequence: >RC220473 representing NM_181509
Red=Cloning site Green=Tags(s)
MKMRFFSSPCGKAAVDPADRCKEVQQIRDQHPSKIPVIIERYKGEKQLPVLDKTKFLVPDHVNMSELVKI
IRRLQLNPTQAFLLVNQHSMSVSTPIADIYEQEKDEDEGFLYMYASQETFGF

TRTRPLEQKLISEEDLAANDILDYKDDDDKV

Chromatograms: https://cdn.origene.com/chromatograms/mg3244_c02.zip

Restriction Sites: SgfI-MluI



[View online »](#)

Cloning Scheme:


ACCN: NM_181509

ORF Size: 375 bp

OTI Disclaimer: The molecular sequence of this clone aligns with the gene accession number as a point of reference only. However, individual transcript sequences of the same gene can differ through naturally occurring variations (e.g. polymorphisms), each with its own valid existence. This clone is substantially in agreement with the reference, but a complete review of all prevailing variants is recommended prior to use. [More info](#)

OTI Annotation: This clone was engineered to express the complete ORF with an expression tag. Expression varies depending on the nature of the gene.

Components: The ORF clone is ion-exchange column purified and shipped in a 2D barcoded Matrix tube containing 10ug of transfection-ready, dried plasmid DNA (reconstitute with 100 ul of water).

Reconstitution Method:

1. Centrifuge at 5,000xg for 5min.
2. Carefully open the tube and add 100ul of sterile water to dissolve the DNA.
3. Close the tube and incubate for 10 minutes at room temperature.
4. Briefly vortex the tube and then do a quick spin (less than 5000xg) to concentrate the liquid at the bottom.
5. Store the suspended plasmid at -20°C. The DNA is stable for at least one year from date of shipping when stored at -20°C.

RefSeq: [NM_181509.3](#)

RefSeq Size: 990 bp

RefSeq ORF: 378 bp

Locus ID: 84557

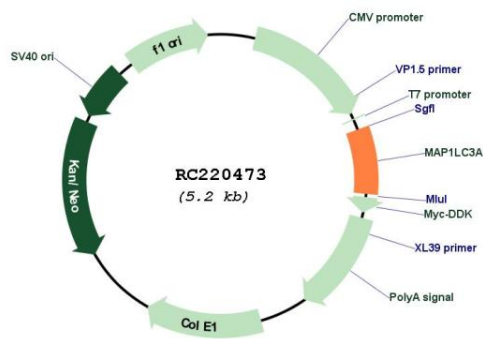
UniProt ID: [Q9H492](#)

Cytogenetics: 20q11.22

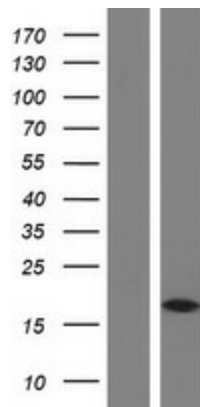
MW: 14.3 kDa

Gene Summary: MAP1A and MAP1B are microtubule-associated proteins which mediate the physical interactions between microtubules and components of the cytoskeleton. MAP1A and MAP1B each consist of a heavy chain subunit and multiple light chain subunits. The protein encoded by this gene is one of the light chain subunits and can associate with either MAP1A or MAP1B. Two transcript variants encoding different isoforms have been found for this gene. The expression of variant 1 is suppressed in many tumor cell lines, suggesting that may be involved in carcinogenesis. [provided by RefSeq, Feb 2012]

Product images:



Circular map for RC220473



Western blot validation of overexpression lysate (Cat# [LY405680]) using anti-DDK antibody (Cat# [TA50011-100]). Left: Cell lysates from untransfected HEK293T cells; Right: Cell lysates from HEK293T cells transfected with RC220473 using transfection reagent MegaTran 2.0 (Cat# [TT210002]).