

Product datasheet for **RC220460**

Integrin Linked Kinase (ILK) (NM_001014794) Human Tagged ORF Clone

Product data:

Product Type:	Expression Plasmids
Product Name:	Integrin Linked Kinase (ILK) (NM_001014794) Human Tagged ORF Clone
Tag:	Myc-DDK
Symbol:	Integrin Linked Kinase
Synonyms:	HEL-S-28; ILK-1; ILK-2; P59; p59ILK
Mammalian Cell Selection:	Neomycin
Vector:	pCMV6-Entry (PS100001)
E. coli Selection:	Kanamycin (25 ug/mL)



[View online »](#)

ORF Nucleotide Sequence:

>RC220460 ORF sequence
 Red=Cloning site Blue=ORF Green=Tags(s)

TTTTGTAATACGACTCACTATAGGGCGGCCGGGAATTCGTGCGACTGGATCCGGTACCGAGGAGATCTGCC
 GCC**GCGATCGCC**

ATGGACGACATTTTCACTCAGTGCCGGGAGGGCAACGCGAGTCGCCGTTTCGCTGTGGCTGGACAACACGG
 AGAACGACCTCAACCAGGGGACGATCATGGCTTCTCCCTTGCCTGCGGCTGCCGAGAGGGCCGCTC
 TGCTGTGGTTGAGATGTTGATCATGCGGGGGCACGGATCAATGTAATGAACCGTGGGGATGACACCCCC
 CTGCATCTGGCAGCCAGTCATGGACACCGTGATATTGTACAGAAGCTATTGCAGTACAAGGCAGACATCA
 ATGCAGTGAATGAACATGGGAATGTGCCCTGCGACTATGCCTGTTTTGGGGCCAAGATCAAGTGGCAGA
 GGACCTGGTGGCAAATGGGGCCCTTGTGAGCATCTGTAACAAGTATGGAGAGATGCCTGTGGACAAAGCC
 AAGGCACCCCTGAGAGAGCTTCCGAGAGCGGGCAGAGAAGATGGCCAGAATCTCAACCGTATCCAT
 ACAAGGACACATTCTGGAAGGGGACCACCCGACTCGGCCCGAAATGGAACCTGAACAAACACTCTGG
 CATTGACTTCAAACAGCTTAACTTCTGACGAAGCTCAACGAGAATCACTCTGGAGAGCTATGGAAGGGC
 CGCTGGCAGGGCAATGACATTGTCGTGAAGGTGCTGAAGGTTTCGAGACTGGAGTACAAGGAAGAGCAGGG
 ACTTCAATGAAGAGTGTCCCGGCTCAGGATTTTCTCGCATCAAATGTGCTCCCAAGTGTAGGTGCTG
 CCAGTCTCCACCTGCTCCTCATCTACTCTCATCACACTGGATGCCATATGGATCCCTTACAATGTA
 CTACATGAAGGCACCAATTTTCGTGCGGGACAGCCAGGCTGTGAAGTTTGGCTTTGGACATGGCAAGGG
 GCATGGCCTTCTACACACACTAGAGCCCTCATCCACGACATGCACCTCAATAGCCGTAGTGTAAATGAT
 TGATGAGGACATGACTGCCCGAATTAGCATGGCTGATGTCAAGTTCTCTTCCAATGTCTGGTTCGATG
 TATGCACCTGCCTGGGTAGCCCCGAAGCTCTGCAGAAGAAGCCTGAAGACACAAACAGACGCTCAGCAG
 ACATGTGGAGTTTTGCAGTGCTTCTGTGGGAAGTGGTGACACGGGAGGTACCCTTTGCTGACCTCCAA
 TATGGAGATTGGAATGAAGGTGGCATTGGAAGGCCTTCGGCCTACCATCCACCAGGTATTTCCCTCAT
 GTGTGTAAGCTCATGAAGATCTGCATGAATGAAGACCCTGCAAAGCGACCCAAATTTGACATGATTGTGC
 CTATCCTTGAGAAGATGCAGGACAAG

ACGCGTACGCGGCCGCTCGAGCAGAACTCATCTCAGAAGAGGATCTGGCAGCAAATGATATCCTGGATT
 ACAAGGATGACGACGATAAGGTTTAA

Protein Sequence:

>RC220460 protein sequence
 Red=Cloning site Green=Tags(s)

MDDIFTQCREGNAVAVRLWLDNTENDLNQGDHGFSPHWAACREGRSAVVEMLIMRGARINVMNRGDDTP
 LHLAASHGHRDIVQKLLQYKADINAVNEHGNVPLHYACFWGQDQVAEDLVANGALVSI CNKYGEMPVDKA
 KAPLRELLRERAEMQNLRIPYKDTFWKGTTRTRPRNGTLNKHSGIDFKQLNFLTKLNENHSGELWKG
 RWQGNDIVVKVLKVRDWSTRKSRDFNEECPRLRIFSHPNVLPVLGACQSPAPHPPTLITHWMPYGSLYNV
 LHEGTNFVVDQSQAVKFDLDMARGMAFLHTLEPLIPRHALNSRSMIDEDMTARISMADVKFSFQCPGRM
 YAPAWVAPEALQKPEDTNRRSADMWSFAVLLWELVTREVPFADLSNMEIGMKVALEGLRPTIPPGISPH
 VCKLMKICMNEDPAKRPKFDMIVPILEKMQDK

TRTRPLEQ**KL**ISEEDLAANDILDYKDDDDKV

Chromatograms:

https://cdn.origene.com/chromatograms/mk6323_c06.zip

Restriction Sites:

Sgfl-Mlul

Cloning Scheme:


ACCN: NM_001014794

ORF Size: 1356 bp

OTI Disclaimer: The molecular sequence of this clone aligns with the gene accession number as a point of reference only. However, individual transcript sequences of the same gene can differ through naturally occurring variations (e.g. polymorphisms), each with its own valid existence. This clone is substantially in agreement with the reference, but a complete review of all prevailing variants is recommended prior to use. [More info](#)

OTI Annotation: This clone was engineered to express the complete ORF with an expression tag. Expression varies depending on the nature of the gene.

Components: The ORF clone is ion-exchange column purified and shipped in a 2D barcoded Matrix tube containing 10ug of transfection-ready, dried plasmid DNA (reconstitute with 100 ul of water).

Reconstitution Method:

1. Centrifuge at 5,000xg for 5min.
2. Carefully open the tube and add 100ul of sterile water to dissolve the DNA.
3. Close the tube and incubate for 10 minutes at room temperature.
4. Briefly vortex the tube and then do a quick spin (less than 5000xg) to concentrate the liquid at the bottom.
5. Store the suspended plasmid at -20°C. The DNA is stable for at least one year from date of shipping when stored at -20°C.

RefSeq: [NM_001014794.3](#)

RefSeq Size: 1797 bp

RefSeq ORF: 1359 bp

Locus ID: 3611

UniProt ID: [Q13418](#)

Cytogenetics: 11p15.4

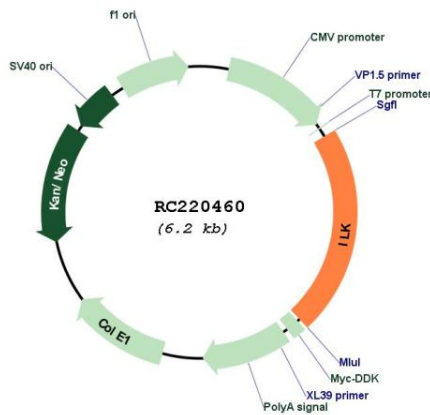
Protein Families: Druggable Genome, Protein Kinase

Protein Pathways: Endometrial cancer, Focal adhesion, PPAR signaling pathway

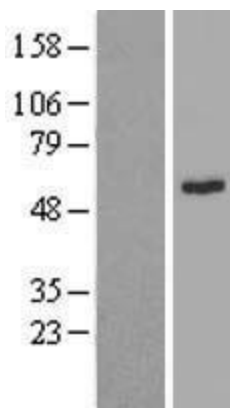
MW: 51.4 kDa

Gene Summary: This gene encodes a protein with a kinase-like domain and four ankyrin-like repeats. The encoded protein associates at the cell membrane with the cytoplasmic domain of beta integrins, where it regulates integrin-mediated signal transduction. Activity of this protein is important in the epithelial to mesenchymal transition, and over-expression of this gene is implicated in tumor growth and metastasis. Alternative splicing results in multiple transcript variants. [provided by RefSeq, Jun 2013]

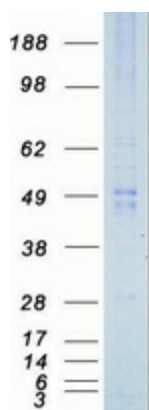
Product images:



Circular map for RC220460



Western blot validation of overexpression lysate (Cat# [LY423078]) using anti-DDK antibody (Cat# [TA50011-100]). Left: Cell lysates from untransfected HEK293T cells; Right: Cell lysates from HEK293T cells transfected with RC220460 using transfection reagent MegaTran 2.0 (Cat# [TT210002]).



Coomassie blue staining of purified ILK protein (Cat# [TP320460]). The protein was produced from HEK293T cells transfected with ILK cDNA clone (Cat# RC220460) using MegaTran 2.0 (Cat# [TT210002]).