

Product datasheet for RC220450

EGFLAM (NM_152403) Human Tagged ORF Clone

Product data:

Product Type:	Expression Plasmids
Product Name:	EGFLAM (NM_152403) Human Tagged ORF Clone
Tag:	Myc-DDK
Symbol:	EGFLAM
Synonyms:	AGRINL; AGRNL; PIKA
Mammalian Cell Selection:	Neomycin
Vector:	pCMV6-Entry (PS100001)
E. coli Selection:	Kanamycin (25 ug/mL)
ORF Nucleotide Sequence:	>RC220450 representing NM_152403 Red=Cloning site Blue=ORF Green=Tags(s)

TTTTGTAATACGACTCACTATAGGGCGGCCGGAATTCGTCGACTGGATCCGGTACCGAGGAGATCTGCCGCCGCGATCGCC

ATGGATTTAATCCGAGGCGTCTTGCTCCGGCTCCTGCTCCTGGCTTCCAGCCTCGGACCCGGCGCGGTGTCGCTCCGAGCGGCATCCGAAAACAGGCAAGGTAGGGCCTCCTCTTGACATCAAGCTGGGCGCATTGAACTGTACGGCTTTCAGCATCCAGTGGAAAATGCCAAGGCATCCTGGAAGTCCCATCCTTGGGTACTGTCTTTACTCTGAGGTTGGCGCAGATAAATCCCTGCAGGAGCAGTTGCACAGCGTGCCTCTCAGCCGGGACATCCCGACCACGGAGGAAGTGATTGGAGATTTGAAACCAGGCACTGAATATCGTGTGAGCATAGCAGCTTACAGCCAGGCTGGCAAAGGGCGGCTGAGCTCTCCTCGGCATGTCAACACTTGTCCCAAGATTCCTGCCTGCCTCCTCTGCAGCTCCCCAGCAGCCACATGTCAATTGTGGTTTCGGATTCTGAGGTGGCCCTGTCTTGAAACCTGGAGCGAGTGAAGGAAGCGCCCTATTCACTACTATTCTGTGGAATTCATCAGGCCAGATTCGACAAAGAGTGGACCTCAATCCATGAGCGGATCCAGATGGACTCCATGGTTATCAAGGGCCTCGATCCAGATACCACTACCAGTTTGCCGTGAGGGCAATGAATCCCATGGCCCCAGCCCCGAGCTGGCCAGTGACATCATCCGGACCCTCTGCCCTGAGGAGCGGGAAGTGGCCGCTATGGACCCGTTATATCACCGACATGGGAGCTGGTGAGGATGATGAAGGATTTGAAGACGACTTAGATTTGGATATTTCTTTGAGGAGGTTAAACCACTCCTGCTACCAAAGGAGGGAATAAGAAATTTTGGTGGAAAGCAAGAAGATGTCTATCTAACCCAAAGACCAATTTCTAGGCTCATCCCCCTACCTCAGCATCTCTCCCTGTGACCACGGTGGCTCCCCAGCCATTCCATACAGAGAAAAGGGAAGAATGGTGTGCCAATATGTC AAGGCTCTTTGACATGCCTTGTGATGAAACTCTCTGCTCTGCTGACAGCTTCTGTGCAATGACTACACCTGGGGGGCTCGCGATGCCAGTGACCCCTGGCAAAGGTGGTGAGAGCTGCTCAGAAGATATTGTTATCCAGTATCCTCAGTTCTTTGGCCACTCCTATGT AACGTTTGAACCTCTGAAGAATCTTATCAGGCATTTCAAATTACTCTTGAATTTAGGGCGGAGGCAGAGATGGCTTACTGCTCTACTGTGGGAGAACGAACAGGGAGGGGGATTCATGTCCCTGGCTATCATCCGACGCTCCCTGCAGTTCAGGTTTAAATTGTGGAACCTGGGTTGCCATCATCGTAAGTGAGACCAAAATCAA ACTAGGGGTTGGCACATGGTTATGCTCTACAGAGATGGGCTGAACGGGCTGCTGCAGCTGAACAATGGC



[View online >](#)

ACCCCAGTGACAGGCCAGTCTCAGGGCCAATACAGTAAAATTACTTTCCGGACACCTCTCTATCTTGGTG
 GCGCTCCCAGCGCTTACTGGTTGGTTAGAGCAACAGGGACAAACCGAGGCTTCAAGGCTGTGTGCAGTC
 GCTCGCTGTGAATGGGAGGAGAATTGACATGAGGCCCTGGCCCTGGGAAAAGCACTCAGTGGGGCTGAT
 GTGGGGGAATGCAGCAGTGAATCTGTGATGAGGCCTCGTGATCCATGGTGGCACCTGCACAGCAATCA
 AAGCCGACTCTACATTTGCCTCTGTCCCTTGGGTTTAAAGTGCAGACTGTGAAGATGCTTTCACCTT
 GACCATTCCTCAGTTCAGAGAGTCTCTGAGATCTTACGCTGCAACTCCCTGGCCACTGGAGCCCCAGCAT
 TACCTTTCCCTTTCATGGAATTTGAGATCACATTTTCGGCCAGACTCAGGAGATGGTGTCCCTGTACAGCT
 ATGACACAGGCAGCAAGACTTCTGTCCATCAACTTGGCAGGGGGCCAGTGGAGTTCGCTTTGACTG
 TGGCTCTGGGACCGGTGTCTCAGGAGTGAAGATCCCCTCACCTGGGCAACTGGCACGAGCTTCGTGTA
 TCTCGCACAGCAAAGAATGGAATCTTACAGGTGGATAAGCAGAAGATAGTGGAGGAATGGCAGAGGGAG
 GCTTCACACAGATTAAGTGAACACAGACATTTTCATTGGCGGAGTCCCCAATTATGATGATGTGAAGAA
 GAACTCGGGTGTCTGAAGCCTTTCAGCGGGAGCATCCAGAAGATCATCTGAATGACCGAACCATCCAT
 GTGAAGCATGACTTACCTCCGGAGTGAATGTGGAGAATGCGGCCACCCTGTGTGAGAGCCCCTGTG
 CCCATGGGGCAGCTGCCGGCCAGGAAGGAGGCTATGACTGTGACTGCCCTTGGGCTTGGAGGGCT
 TCACTGCCAGAAAGCGATCATAGAAGCCATTGAGATCCCGCAGTTTATCGGCCGAGTTACCTGACGTAT
 GACAACCCAGATATCTTGAAGAGGGTGTGAGGATCAAGATCAAATGTGTTTCATGAGGTTTAAAACA
 ACTGCCAAGGATGGCCTTTTGTGTGGAGGGGAGACAGCCCATGAGACCCAACAGCGACTTCATTTCTTGGG
 CCTTCGGGATGGAGCCCTCGTGTTCAGCTATAACCTGGGCAGTGGTGTGGCATCCATCATGGTGAATGGC
 TCCTTCAACGATGGTTCGGTGGCACCAGTAAAGGCCGTTAGGGATGGCCAGTCAAGAAAGATAACCGTGG
 ATGACTATGGAGCCAGAACAGGCAAAATCCCGAGCATGATGCGGCAGCTTAACATCAATGGAGCTCTGTA
 TGTGGGTGGAATGAAGGAAATGCTCTGCACACTAACAGGCAATATATGAGAGGGCTCGTGGGCTGTATC
 TCTCACTTACCCTGTCCACCGATTACCACATTTCCCTCGTGAAGATGCCGTGGATGGAAAAACATCA
 ACATTGTGGAGCCAAG

ACGCGTACGCGGCCGCTCGAGCAGAAACTCATCTCAGAAGAGGATCTGGCAGCAAATGATATCCTGGATT
 ACAAGGATGACGACGATAAGGTTTAA

Protein Sequence:

>RC220450 representing NM_152403
 Red=Cloning site Green=Tags(s)

MDLIRGVLLRLLLLASSLGPVAVSLRAAIRKPGKVGPPLDIKLGNLCTAFSIQWKMPRHPGSPILGYTV
 FYSEVADKSLQQLHSVPLSRDIPTEEVIGDLKPGTEYRVSI AAYSQAGKGR LSSPRHVTTLSQD SCL
 PPAAPQQPHVIVVSDSEVALSWKPGASEGSAPIQYYSVEFIRPDFDKKWT SIHERIQMDSMVIKGLDPDT
 NYQFAVRAMNSHGSPRSWPSDIIRTLCP E EAGSGRYGPRYITDMGAGEDDEGFEDDLDLDISFEEVKPL
 PATKGGNKKFLVESKKMSISNPKTISR LIPPTSASLPVTTVAPQPIPIQRKGNKVAIMSRLFDMPCDET
 LCSADSFVNDYTWGGSRCQCTLGKGGESCE DIVIQYPQFFGHSYVTFEPLKNSYQAFQITLFRAEAE
 DG LLLYCGENEHGRGDFMSLAIIRRS LQFRFNCGTGVAIIVSETKIKLGGWHMVMLYRDGLNGLLQ L NNG
 TPVTGQSQGQYSKITFR TPLYLGGAPSA YWLV RATGTNRGFQGC VQSLAVNGRRIDMRPWPLGKALSGAD
 VGECSGICDEASCIHGGTCTAIKADSYICL CPLGFKGRHCEDAFTLTIPQFRESLRSYAATPWPLEPQH
 YLSFMEFEITFRPDSGDGVLLYSYDTGSKDFLSINLAGGHVEFRFDCGSGTGVL RSEDP LTLGNWHEL RV
 SRTAKNGILQVDKQKIVEGMAEGGFTQIKCNTDIFIGGVPNYDDVKNSGVLPKPSGSIQKIILNDRTIH
 VKHDFTSGVNVENAAHPCVRAPCAHGGSCRPRKEGYDCPLGF E GLHCQKAIIEAIEIPQF IGRSYLT Y
 DNPDI LKRVSRSNVFMRFKTTAKDGLLLWRGDSMPRPNSDFISLGLRDGALVFSYNLGSVVASIMVNG
 SFNDGRWHRVKA VRDQSGKITVDDY GARTGKSPGMMRQLNINGALYVGGMKEIALHTNRQYMRGLVGI
 SHFTLSTDYHISLVEDAVDGNINTCGAK

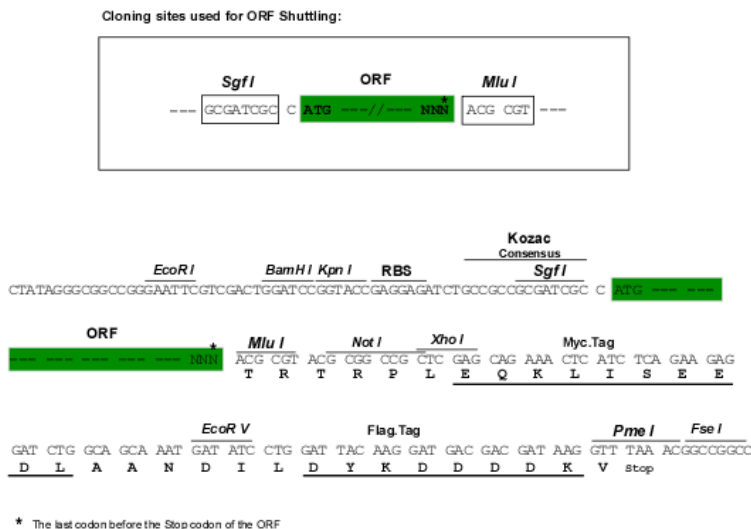
TRTRPLEQKLI SEEDLAANDILDYKDDDDKV

Chromatograms:

https://cdn.origene.com/chromatograms/mg3691_h01.zip

Restriction Sites:

Sgfl-Mlul

Cloning Scheme:


ACCN: NM_152403

ORF Size: 3027 bp

OTI Disclaimer: The molecular sequence of this clone aligns with the gene accession number as a point of reference only. However, individual transcript sequences of the same gene can differ through naturally occurring variations (e.g. polymorphisms), each with its own valid existence. This clone is substantially in agreement with the reference, but a complete review of all prevailing variants is recommended prior to use. [More info](#)

OTI Annotation: This clone was engineered to express the complete ORF with an expression tag. Expression varies depending on the nature of the gene.

Components: The ORF clone is ion-exchange column purified and shipped in a 2D barcoded Matrix tube containing 10ug of transfection-ready, dried plasmid DNA (reconstitute with 100 ul of water).

- Reconstitution Method:**
1. Centrifuge at 5,000xg for 5min.
 2. Carefully open the tube and add 100ul of sterile water to dissolve the DNA.
 3. Close the tube and incubate for 10 minutes at room temperature.
 4. Briefly vortex the tube and then do a quick spin (less than 5000xg) to concentrate the liquid at the bottom.
 5. Store the suspended plasmid at -20°C. The DNA is stable for at least one year from date of shipping when stored at -20°C.

RefSeq: [NM_152403.4](#)

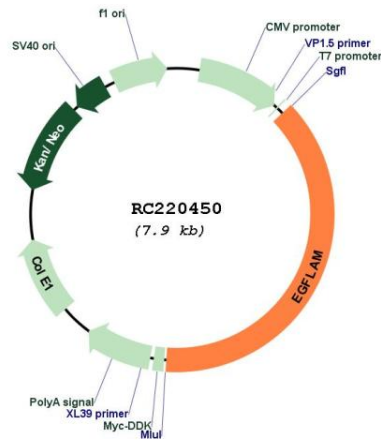
RefSeq Size: 3952 bp

RefSeq ORF: 3030 bp

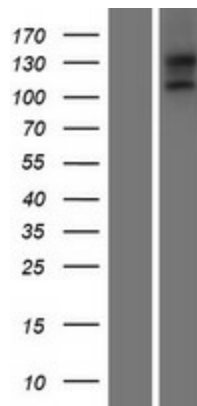
Locus ID: 133584

UniProt ID: [Q63HQ2](#)
Cytogenetics: 5p13.2-p13.1
Protein Families: Transmembrane
MW: 110.2 kDa
Gene Summary: Involved in both the retinal photoreceptor ribbon synapse formation and physiological functions of visual perception. Necessary for proper bipolar dendritic tip apposition to the photoreceptor ribbon synapse. Promotes matrix assembly and cell adhesiveness (By similarity).[UniProtKB/Swiss-Prot Function]

Product images:



Circular map for RC220450



Western blot validation of overexpression lysate (Cat# [LY407571]) using anti-DDK antibody (Cat# [TA50011-100]). Left: Cell lysates from untransfected HEK293T cells; Right: Cell lysates from HEK293T cells transfected with RC220450 using transfection reagent MegaTran 2.0 (Cat# [TT210002]).