

Product datasheet for RC220449

ErbB 4 (ERBB4) (NM_005235) Human Tagged ORF Clone

Product data:

Product Type:	Expression Plasmids
Product Name:	ErbB 4 (ERBB4) (NM_005235) Human Tagged ORF Clone
Tag:	Myc-DDK
Symbol:	ErbB 4
Synonyms:	ALS19; HER4; p180erbB4
Mammalian Cell Selection:	Neomycin
Vector:	pCMV6-Entry (PS100001)
E. coli Selection:	Kanamycin (25 ug/mL)
ORF Nucleotide Sequence:	>RC220449 representing NM_005235 Red=Cloning site Blue=ORF Green=Tags(s)

TTTTGTAATACGACTCACTATAGGGCGGCCGGAATTCGTCGACTGGATCCGGTACCGAGGAGATCTGCC
GCC**CGATCGCC**

ATGAAGCCGGCGACAGGACTTTGGGTCTGGGTGAGCCTTCTCGTGGCGCGGGGACCGTCCAGCCCAGCG
ATTCTCAGTCAGTGTGTGCAGGAACGGAGAATAAACTGAGCTCTCTCTGACCTGGAACAGCAGTACCG
AGCCTTGCACAAGTACTATGAAAAGTGTGAGGTTGTCTGGGCAACCTGGAGATAACCAGCATTGAGCAC
AACCGGGACCTCTCCTTCTGCGGTCTGTTGAGAAGTACAGGCTACGTGTTAGTGCTCTTAATCAGT
TTCGTTACCTGCCTCTGGAGAATTTACGCATTATTCGTGGGACAAAACCTTTATGAGGATCGATATGCCTT
GGCAATATTTTTAACTACAGAAAAGATGGAAAACCTTTGGACTTCAAGAACTTGGATTAAAGAACTTGACA
GAAATCCTAAATGGTGGAGTCTATGTAGACCAGAACAAATTCCTTTGTTATGCAGACACCATTCATTGGC
AAGATATTGTTCCGAACCCATGGCCTTCCAACCTTGACTCTTGTGTCAACAAATGGTAGTTCAGGATGTGG
ACGTTGCCATAAGTCCTGTACTGGCCGTTGCTGGGGACCCACAGAAAATCATTGCCAGACTTTGACAAGG
ACGGTGTGTGCAGAACATGTGACGGCAGATGCTACGGACCTTACGTGAGTACTGCTGCCATCGAGAAT
GTGCTGGAGGCTGCTCAGGACCTAAGGACACAGACTGCTTTCCTGCATGAATTTCAATGACAGTGGAGC
ATGTGTTACTCAGTGTCCCAAACCTTTGTCTACAATCCAACACCTTTCAACTGGAGCACAAATTTCAAT
GCAAAGTACACATATGGAGCATTCTGTGTCAAGAAATGTCCACATAACTTTGTGGTAGATTCAGTCTTT
GTGTGCGTGCCTGCCCTAGTTCCAAGATGGAAGTAGAAGAAAATGGGATTAATGTGTAACCTTGACAC
TGACATTTGCCAAAAGCTTGTGATGGCATTGGCACAGGATCATTGATGTCAGCTCAGACTGTGGATTCC
AGTAACATTGACAAATTCATAAACTGTACCAAGATCAATGGGAATTTGATCTTTCTAGTCACTGGTATTC
ATGGGGACCCTTACAATGCAATGAAGCCATAGACCCAGAGAACTGAACGTCTTTCCGACAGTCAGAGA
GATAACAGGTTTCTGAACATACAGTATGCCCACCAACATGACTGACTTCAGTGTTTTTTCTAACCTG
GTGACCATTGGTGAAGAGTACTCTATAGTGGCCTGTCTTGCTTATCCTCAAGCAACAGGGCATCACCT
CTCTACAGTTCAGTCCCTGAAGGAAATCAGCGCAGGAAACATCTATATTACTGACAACAGCAACCTGTG
TTATTATCATACCATTAAGTGGACAACACTCTTACGACAATCAACCAGAGAATAGTAATCCGGGACAAC



[View online »](#)

AGAAAAGCTGAAAATTGTACTGCTGAAGGAATGGTGTGCAACCATCTGTGTTCCAGTGATGGCTGTTGGG
GACCTGGGCCAGACCAATGTCTGTCTGTGCGCCGCTTCAGTAGAGGAAGGATCTGCATAGAGTCTTGTA
CCTCTATGATGGTGAATTCGGGAGTTTGAGAATGGCTCCATCTGTGAGTGTGACCCCCAGTGTGAG
AAGATGGAAGATGGCCTCCTCACATGCCATGGACCGGGTCTGACAACTGTACAAAGTGTCTCATTTTA
AAGATGGCCAACTGTGTGGAAAAATGCCAGATGGCTTACAGGGGGCAACAGTTTCATTTTCAAGTA
TGCTGATCCAGATCGGGAGTGCCACCCATGCCATCCAACTGCACCCAAGGGTGTAAACGGTCCCCTAGT
CATGACTGCATTTACTACCCATGGACGGCCATCCACTTTACCACAACATGCTAGAACTCCCCTGATTG
CAGCTGGAGTAATTGGTGGGCTTTCATTCTGGTCATTGTGGGTCTGACATTTGCTGTTTATGTTAGAAG
GAAGAGCATCAAAAAGAAAAGAGCCTTGAGAAGATTCTTGAAAACAGAGTTGGTGGAAACCATTAACCCC
AGTGGCACAGCACCCAATCAAGCTCAACTTCGATTTTTGAAAAGAACTGAGCTGAAGAGGGTAAAAGTCC
TTGGCTCAGGTGCTTTTGGAACGGTTTATAAAGGTATTTGGGTACCTGAAGGAGAAAAGTGTGAAGATTCC
TGTGGCTATTAAGATTCTTAATGAGACAACTGGTCCCAAGGCAATGTGGAGTTCATGGATGAAGCTCTG
ATCATGGCAAGTATGGATCATCCACACCTAGTCCGGTGTGGTGTGTCTGAGCCCAACCATCCAGC
TGGTACTCAACTTATGCCCCATGGCTGCCTGTTGGAGTATGTCCACGAGCACAAGGATAACATTGGATC
ACAACCTGTGCTTAACCTGGTGTGTCCAGATAGCTAAGGGAATGATGTACCTGGAAGAAAGACGACTCGTT
CATCGGGATTTGGCAGCCCGTAATGTCTTAGTGAATCTCCAAACCATGTGAAAAACACAGATTTGGGC
TAGCCAGACTCTTGGAAGGAGATGAAAAAGAGTACAATGCTGATGGAGGAAAGATGCCAATTAATGGAT
GGCTCTGGAGTGTATACATTACAGGAAATTCACCCATCAGAGTGACGTTTGGAGCTATGGAGTACTATA
TGGGAAGTGTGACCTTTGGAGGAAAACCTATGATGGAATCCAACGCGAGAAAACCTGATTTATTAG
AGAAAGGAGAACGTTTGCCTCAGCCTCCCATCTGCACTATTGACGTTTACATGGTATGGTCAAATGTTG
GATGATTGATGCTGACAGTAGACCTAAATTTAAGGAAGTGGTGTGAGTTTTCAAGGATGGCTCGAGAC
CCTCAAAGATACCTAGTTATTCAGGGTGTGATCGTATGAAGCTTCCCAGTCCAAATGACAGCAAGTTCT
TTCAGAATCTCTTGATGAAGAGGATTTGGAAGATATGATGGATGCTGAGGAGTACTTGGTCCCTCAGGC
TTTCAACATCCCACCTCCCATCTATACTTCCAGAGCAAGAATTGACTCGAATAGGAGTGAATTTGGACAC
AGCCCTCCTCCTGCCTACACCCCATGTGAGGAAACAGTTTGTATACCGAGATGGAGGTTTTGCTGCTG
AACAAAGGAGTGTCTGTGCCCTACAGAGCCCAACTAGCACAATTCAGAAGCTCCTGTGGCACAGGGTGC
TACTGCTGAGATTTTGTGACTCCTGTGTAATGGCACCTACGCAAGCCAGTGGCACCCCATGTCCAA
GAGGACAGTAGCACCCAGAGGTACAGTGTGACCCACCGTGTGCCCCAGAACGGAGCCACGAGGAG
AGCTGGATGAGGAAGGTTACATGACTCCTATGCGAGACAAACCAACAAGAATACCTGAATCCAGTGG
GGAGAACCCTTTGTTTCTCGGAGAAAAATGGAGACCTTCAAGCATTGGATAATCCCGAATATCACAAT
GCATCCAATGGTCCACCAAGGCCGAGGATGAGTATGTGAATGAGCCACTGTACCTCAACACCTTTGCCA
ACACCTTGGGAAAAGCTGAGTACCTGAAGAACAACATACTGTCAATGCCAGAGAAGGCCAAGAAAAGCGTT
TGACAACCTGACTACTGGAACACAGCCTGCCACCTCGGAGCACCCCTCAGCACCCAGACTACCTGCAG
GAGTACAGCACAAAATATTTTTATAAACAGAATGGGCGGATCCGGCTATTGTGGCAGAGAATCCTGAAT
ACCTCTCTGAGTTCTCCCTGAAGCCAGGCACTGTGCTGCCGCTCCACCTTACAGACACCCGAATACTGT
GGTG

ACGCGTACGCGGCCGCTCGAGCAGAACTCATCTCAGAAGAGGATCTGGCAGCAATGATATCCTGGATT
ACAAGGATGACGACGATAAGGTTTAA

Protein Sequence: >RC220449 representing NM_005235
 Red=Cloning site Green=Tags(s)

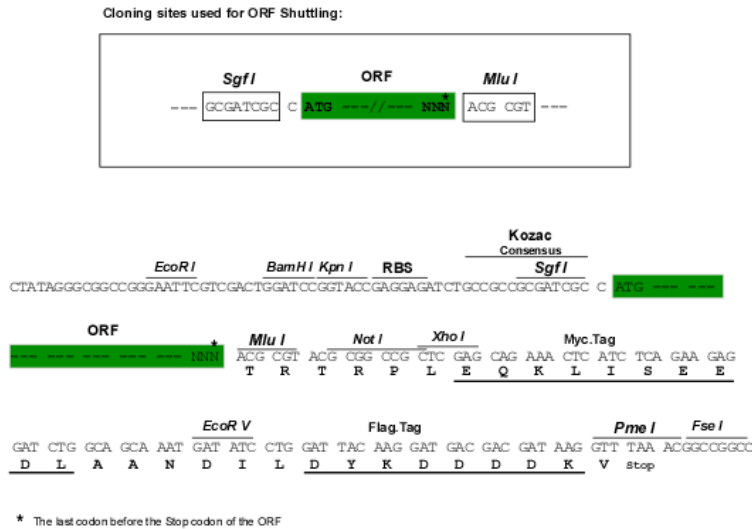
MKPATGLWVWSLLVAAGTVQPSDSQSV CAGTENKLSLSDLEQQYRALRKYENCEVVMGNLEITSIEH
 NRDLSFLRSVREVTGYVLVALNQFRYLPLENLRIIRGTKLYEDRYALAIFLNRYRKDGNFGLQELGLKNLT
 EILNGGVYVDQNKFLCYADTIHWQDIVRNPWPSNLTLVSTNGSSGGRCHKSGTGRCWGPTENHCQTLTR
 TVCAEQCDGRCYGPYVSDCCHRECAGGCSGPKDTCDFACMNFNDSGACVTQCPQTFVYNPTTFQLEHNFN
 AKYTYGAFVCVKKCPHNFVVDSSSVCVRACPSKMEVEENGIMCKPCTDICTPKACDGIQTGSLMSAQTVDS
 SNIDKFINCTKINGNLIFLVTGIHGDPYNAIEAIDPEKLNVFRTVREITGFLNIQSWPPNMTDFSVFNSL
 VTIGGRVLYSGLSLLILKQQGITSLSLQFQSLKEISAGNIYITDNSNLCYYHTINWTLFSTINQRIVIRDN
 RKAENCTAEGMVCNHLCSSDGCWGPDPQCLSCRRFSRGRICIESCNLYDGEFREFENGSIQVECDPQCE
 KMEDGLLTCHGPGDNTKCSHFKDGPNCEKCPDGLQGANSFIFKYADPDRECHPCHPCTQGCGNPTS
 HDCIYYPWTGHSTLPQHARTPLIAAGVIGGLFILVIVGLTFVYVRRKSIKKRALRRFLETETVEPLTP
 SGTAPNQAQLRILKETELKRVKVLGSGAFGTVYKGIWVPEGETVKIPVAIKILNETTGPKANVEFMDEAL
 IMASMDHPLVRLLVGCLSPITQLVTQLMPHGCLLEYVHEHKDNIQSLLNWCVQIAKGMMYLEERRLV
 HRDLAARNVVLKSPNHVKITDFGLARLLEGEKEYNADGGKMPIKWMALECIHYRKFTHQSDVWSYGTI
 WELMTFGGKPYDGIPTREIPDLLEKGERLPQPPICTIDVYVMVKCWMIDADSRPKFKELAAEFMRMARD
 PQRYLVIQDDRMKLPSPNDSKFFQNLLEEDLEDDMMAEEYLPQAFNIPPIYTSRARIDSNRSEIGH
 SPPPAYTPMSGNQFVYRDGGFAAEQGVSVYRAPSTIPEAPVAQGATAEIFDDSCCNGLRKPVAPHVQ
 EDSSTQRYADPTVFAPERSPRGELDEEGYMPMRDKPKQEYLNPEENPFVSRKNGDLQALDNPEYHN
 ASNGPPKAEDYVNEPLYLNTFANTLGKAEYLKNNILSMPEKAKKAFDNPDYWNHSLPPRSTLQHPDYLQ
 EYSTKYFYKQNGRIRPIVAENPEYLSEFSLKPGTVLPPPPYRHRNTVV

TRTRPLEQKLISEEDLAANDILDYKDDDDKV

Chromatograms: https://cdn.origene.com/chromatograms/mg2379_a01.zip

Restriction Sites: SgfI-MluI

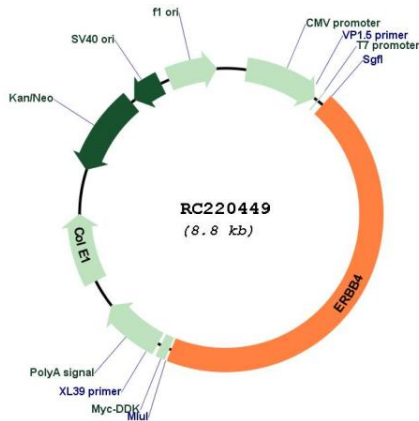
Cloning Scheme:



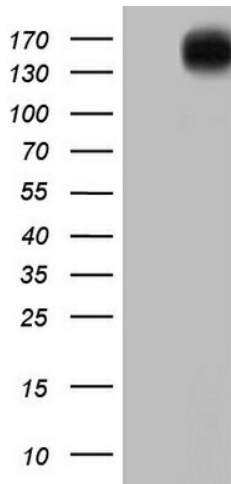
ACCN: NM_005235

ORF Size: 3924 bp

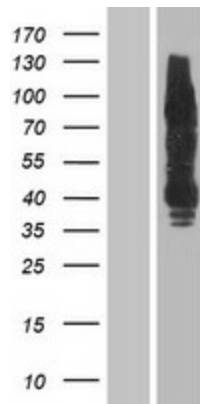
OTI Disclaimer:	The molecular sequence of this clone aligns with the gene accession number as a point of reference only. However, individual transcript sequences of the same gene can differ through naturally occurring variations (e.g. polymorphisms), each with its own valid existence. This clone is substantially in agreement with the reference, but a complete review of all prevailing variants is recommended prior to use. More info
OTI Annotation:	This clone was engineered to express the complete ORF with an expression tag. Expression varies depending on the nature of the gene.
Components:	The ORF clone is ion-exchange column purified and shipped in a 2D barcoded Matrix tube containing 10ug of transfection-ready, dried plasmid DNA (reconstitute with 100 ul of water).
Reconstitution Method:	<ol style="list-style-type: none">1. Centrifuge at 5,000xg for 5min.2. Carefully open the tube and add 100ul of sterile water to dissolve the DNA.3. Close the tube and incubate for 10 minutes at room temperature.4. Briefly vortex the tube and then do a quick spin (less than 5000xg) to concentrate the liquid at the bottom.5. Store the suspended plasmid at -20°C. The DNA is stable for at least one year from date of shipping when stored at -20°C.
Note:	Plasmids are not sterile. For experiments where strict sterility is required, filtration with 0.22um filter is required.
RefSeq:	NM_005235.3
RefSeq Size:	5484 bp
RefSeq ORF:	3927 bp
Locus ID:	2066
UniProt ID:	Q15303
Cytogenetics:	2q34
Domains:	Recep_L_domain, pkinase, TyrKc, S_TKc, YLP, Furin-like, FU
Protein Families:	Druggable Genome, Protein Kinase, Transmembrane
Protein Pathways:	Calcium signaling pathway, Endocytosis, ErbB signaling pathway
MW:	146.81 kDa
Gene Summary:	This gene is a member of the Tyr protein kinase family and the epidermal growth factor receptor subfamily. It encodes a single-pass type I membrane protein with multiple cysteine rich domains, a transmembrane domain, a tyrosine kinase domain, a phosphatidylinositol-3 kinase binding site and a PDZ domain binding motif. The protein binds to and is activated by neuregulins and other factors and induces a variety of cellular responses including mitogenesis and differentiation. Multiple proteolytic events allow for the release of a cytoplasmic fragment and an extracellular fragment. Mutations in this gene have been associated with cancer. Alternatively spliced variants which encode different protein isoforms have been described; however, not all variants have been fully characterized. [provided by RefSeq, Jul 2008]

Product images:


Circular map for RC220449



HEK293T cells were transfected with the pCMV6-ENTRY control (Cat# [PS100001], Left lane) or pCMV6-ENTRY ERBB4 (Cat# RC220449, Right lane) cDNA for 48 hrs and lysed. Equivalent amounts of cell lysates (5 ug per lane) were separated by SDS-PAGE and immunoblotted with anti-ERBB4 (Cat# [TA804931]). Positive lysates [LY401604] (100ug) and [LC401604] (20ug) can be purchased separately from OriGene.



Western blot validation of overexpression lysate (Cat# [LY401604]) using anti-DDK antibody (Cat# [TA50011-100]). Left: Cell lysates from untransfected HEK293T cells; Right: Cell lysates from HEK293T cells transfected with RC220449 using transfection reagent MegaTran 2.0 (Cat# [TT210002]).