

## Product datasheet for RC220444

### PARP4 (NM\_006437) Human Tagged ORF Clone

#### Product data:

Product Type:	Expression Plasmids
Product Name:	PARP4 (NM_006437) Human Tagged ORF Clone
Tag:	Myc-DDK
Symbol:	PARP4
Synonyms:	ADPRTL1; ARTD4; p193; PARP-4; PARPL; PH5P; VAULT3; VPARP; VWA5C
Mammalian Cell Selection:	Neomycin
Vector:	pCMV6-Entry (PS100001)
E. coli Selection:	Kanamycin (25 ug/mL)
ORF Nucleotide Sequence:	>RC220444 representing NM_006437 Red=Cloning site Blue=ORF Green=Tags(s)

TTTTGTAATACGACTCACTATAGGGCGGCCGGAATTCGTCGACTGGATCCGGTACCGAGGAGATCTGCC  
GCC**CGATCGCC**

ATGGTGATGGGAATCTTTGCAAATTGTATCTTCTGTTTAAAAGTGAAGTACTTACCTCAGCAGCAGAAGA  
AAAAGCTACAACTGACATTAAGGAAAATGGCGGAAAGTTTTCTTTTCGTTAAATCCTCAGTGCACACA  
TATAATCTTAGATAATGCTGATGTTCTGAGTCAGTACCAACTGAATTCATCCAAAAGAACCACGTTTCAT  
ATTGCAAACCCAGATTTTATATGGAATCTATCAGAGAAAAGAGACTCTGGATGTAAGAATTATGATC  
CTTATAAGCCCTGGACATCACACCACCTCCTGATCAGAAGGCGAGCAGTTCTGAAGTAAAACAGAAGG  
TCTATGCCCGGACAGTGCCACAGAGGAGGAAGACTGTGGAACCTCACTGAGTTTGGTATGCAGAATGTT  
GAAATTCCTCATCTTCTCAAGATTTTGAAGTTGCAAAATATAACACCTTGGAGAAAAGTGGGAATGGAGG  
GAGGCCAGGAAGCTGTGGTGGTGGAGCTTCAGTGTTCGCGGGACTCCAGGGACTGTCTTTCTGATATC  
CTCACACTTCTCCTGGATGATGGCATGGAGACTAGAAGACAGTTTGCTATAAAGAAAACCTCTGAAGAT  
GCAAGTGAATACTTTGAAAATTACATTGAAGAAGTGAAGAAAACAGGATTTCTACTAAGAGAACATTTCA  
CACCTGAAGCAACCCAATTAGCATCTGAACAATTGCAAGCATTGCTTTTGGAGGAAGTCATGAATCAAG  
CACTCTGAGCCAAGAGGTGAGCGATTTAGTAGAGATGATTTGGCAGAGGCCCTGGGCCACCTGGAACAC  
ATGCTTCTCAAGCCAGTGAACAGGATTAGCCTCAACGATGTGAGCAAGGCAGAGGGGATTCTCCTCTAG  
TAAAGGCAGCACTGAAAATGGAGAAAACAGCAGAGCAATTGCAAAAAGATGATGACAGAGTTTTACAGACT  
GATACCTCACAAAAGCACAATGCCCAAAGAAGTGAACCTGGGACTATTGGCTAAGAAAGCAGACCTCTGC  
CAGCTAATAAGAGACATGGTTAATGTCTGTGAACTAATTTGTCCAAACCAACCCACCATCCCTGGCCA  
AATACCGAGCTTTGAGGTGCAAAATTGAGCATGTTGAACAGAATACTGAAGAATTTCTCAGGGTTAGAAA  
AGAGGTTTTGCAGAATCATCACAGTAAGAGCCAGTGGATGTCTTGAGATATTTAGAGTTGGCAGAGTG  
AATGAAACCACAGAGTTTTGAGCAAACCTGGTAATGTGAGGCCCTTGTGCATGGTTCTCCTGTACAAA  
ACATCGTGGGAATCTTGTGTCGAGGGTTGCTTTACCAAAGTAGTGAAGATCGTGGTGTGCAAGAAC  
AGACGTCGGAACCTTGAAGTGGGATTTATTCAGTGATTCGCTCAGTACAAGTATCAAGTACTCACAC



[View online »](#)

CCGGGAGAGACAGATGGCACCAGACTCCTGCTCATTTGTGACGTAGCCCTCGAAAAGTGTATGGACTTAC  
 ATGAGAAGGACTTTTCTTAACCTGAAGCACCACCAGGCTACGACAGTGTGCATGGAGTTTCAAAACAGC  
 CTCTGTACCACAGACTTTGAGGATGATGAATTTGTTGTCTATAAAACCAATCAGGTTAAAATGAAATAT  
 ATTATTAATTTTCCATGCCTGGAGATCAGATAAAGGACTTTCATCCTAGTGATCATACTGAATTAGAGG  
 AATACAGACCTGAGTTTTCAAATTTTTCAAAGTTGAAGATTACCAGTTACCAGATGCCAAAACCTCCAG  
 CAGCACC AAGGCCGCCCTCCAGGATGCCTCTGGAACTTGGTTCCTCTGGAGGATGTCCACATCAAAGGG  
 AGAATCATAGACACTGTAGCCCAGGTCATTGTTTTTCAGACATACACAAAATAAAAGTCCAGTCCCATG  
 AGGCAAAAATATATCTTTCTTTGGATGACAAGGCCGCTGTGTGTGGCTTCGAAGCCTTCATCAATGGGAA  
 GCACATAGTTGGAGAGATTAAGAGAAGGAAGAAGCCAGCAAGAGTACCTAGAAGCCGTGACCCAGGGC  
 CATGGCGCTTACCTGATGAGTCAGGATGCTCCGGACGTTTTTACTGTAAGTGTGGAAAACCTACCCCTA  
 AGGCTAAGGTTCTTATAAAAATTACCTACATCACAGAACTCAGCATCCTGGGCACTGTTGGTGTCTTTTT  
 CATGCCGCCACCCTAGCACCCTGGCAACAGGACAAGGCTTTGAATGAAAACCTCAGGATACAGTAGAG  
 AAGATTTGTATAAAAAGAAATAGGAACAAAGCAAAGCTTCTTTGACTATGTCTATTGAGATGCCGTATG  
 TGATTGAATTCATTTTCAGTGATACACATGAACGAAACAAAAGCGCACAGACTGCAAAGCTGTCATTAG  
 CACCATGGAAGGCAGCTCCTTAGACAGCAGTGGATTTTCTCTCCACATCGGTTTGTCTGCTGCCATCTC  
 CCAAGAATGTGGGTTGAAAAACATCCAGAAAAAGAAAGCGAGGCTTGCATGCTTGTCTTCAACCGATC  
 TCGATGTCGACCTCCCTGACCTAGCCAGTGAGAGCGAAGTGATTATTTGTCTTACTGCTCCAGTCCAT  
 GGAGGGTGTGACATTCTTGCAAGCCAAGCAAATCACCTTGCATGCGCTGTCTTGGTGGGTGAGAAGCAG  
 AAAGTAAATATTATCCAGTTCGGCACAGGTTACAAGGAGCTATTTTCGTATCCTAAGCATATCACAAGCA  
 ATACCACGGCAGCAGAGTTTATCATGTCTGCCACACCTACCATGGGGAACACAGACTTCTGGAAAACCT  
 CCGATATCTTAGCTTATGTACCCTGCTCGAGGGTACGGAACATCCTCCTGGTGTCTGATGGGCACCTC  
 CAGGATGAGAGCCTGACATTACAGCTCGTGAAGAGGAGCCGCCGCACACCAGGTTATTCGCCTCGGTA  
 TCGGTTCTACAGCAAATCGTCAGTCTTAAAGATTTTGTCCCAGTGTGGTCCCGGAGTATTTGAATATTT  
 TAATGCAAAAATCCAAGCATAGTTGGAGAAAACAGATAGAAGACCAAATGACCAGGCTATGTTCTCCGAGT  
 TGCCACTCTGTCTCCGTCAAATGGCAGCAACTCAATCCAGATGCGCCCGAGGCCCTGCAGGCCCCAGCCC  
 AGGTGCCATCCTTGTTCGCAATGATCGACTCCTTGTCTATGGATTATTCTACTGCACACAAGCAAC  
 TCTGTGTGCACTAATTCAAGAGAAAAGAAATTTGTACAATGGTGTGCGACTACTGAGCTTCAGAAGCAACT  
 GGAATATGATCCACAAGCTGGCAGCCGAGCTTAATCAGAGATTATGAAGATGGCATTCTTACAGAAA  
 ATGAAACCAGTCATGAGATGAAAAAACAACCTTGAAATCTCTGATTATTAACCTCAGTAAAGAAAACCTC  
 TCTCATAACACAATTTACAAGCTTTGTGGCAGTTGAGAAAAGGGATGAGAATGAGTCGCCTTTTCTGAT  
 ATTCAAAAGTTTCTGAACTTATTGCCAAGAAGATGTAGACTTCTGCCCTACATGAGCTGGCAGGGGG  
 AGCCCCAAGAAGCCGTCAGGAACCAAGTCTTTTTAGCATCCTCTGAGTGGCCAGAATTACGTTTATCCAA  
 ACGAAAACATAGGAAAATTCATTTTCCAAAAGAAAAATGGAATATCTCAGCCAGAAGTTTCTGAAGAT  
 TTTGAAGAGGATGGCTTAGGTGTACTACCAGCTTTACATCAAATTTGGAACGTGGAGGTGTGAAAAGC  
 TATTGGATTTAAGTTGGACAGAGTCATGTAACCAACAGCAACTGAACCACTATTTAAGAAAAGTCAGTCC  
 ATGGGAAACATCTACTTCTAGCTTTTTTCTATTTTGGTCCGGCCGTTGGTTCCTATCTTCCCCGACT  
 GCCCGCCTCACAGTCTGCTTCTTGTCTTTTGCTCATATCGTCAGGTAGTATGTTTCGGTTCAGCTG  
 CTCCTCCAGACAGTTTGTGATGCTCAATTCAGCCAAGGCCCTGTCCCTGGCACTTGTGCTGACTGGAT  
 CCCACAGTCGGCGTCTTGTCCCACAGGACCTCCCAGAACCACCTTCTGCACCTATTGTGGCATTGTT  
 TTTTCAGGGAGCTCATTAAAGCTCTGCACAGTCTGCTCCACTGCAACATCCTGGAGGCTTTACTACCAGGC  
 CTCTGCTGGCACCTTCCCTGAGCTGGATTCTCCCAGCTTCATTTCTCTCTTCTACAGACCCTGATCC  
 CATCAGAGGTTTTGGGTCTTATCATCCCTCTGCTTACTCTCCTTTTCAATTTCAACCTTCCGACGCTCT  
 TTGACTGCCAACCTTAGGCTGCCAATGGCTCTGCTTTACCTGAGGCTCTTTGCAGTCAGTCCCGGACTA  
 CCCCAGTAGATCTCTGTCTTCTAGAAGAATCAGTAGGCAGTCTCGAAGGAAGTCGATGCTCTGTCTTTGC  
 TTTTCAAAGTTCTGACACAGAAAGTGTAGCTATCAGAAGTACTCAAGACAGCTGCTTTTTACAATA  
 AAATGTGATACAAAAGATGACAGTATCCCGTCTTTCTGGAAGTAAAAGAAGAGGATGAAATAGTGTGCA  
 CACAACACTGGCAGGATGCTGTGCCTTGGACAGAACTCCTCAGTCTACAGACAGAGGATGGCTTCTGGAA  
 ACTTACACCAGAACTGGGACTTATATTAATCTTAATACAAATGTTTGCACAGCTTTCTTAAACAAAAA  
 GGCATTCAATCTTAGGTGTAAGGAAGAGAATGTCTCCTGGACCTAATTGCCACAATGCTGGTACTAC  
 AGTTTATTCGCACCAGGTTGAAAAAGAGGGAATAGTGTCAAATCACTGATGAAAATGGATGACGCTTC  
 TATTTCCAGGAATATTCCTGGGCTTTTGGAGCAATAAAGCAAGCAAGTGAATGGGTAAGAAGAAGTAA  
 GGACAGTACCCATCTATCTGCCACGGCTTGAAGTGGGGAACGACTGGGACTCTGCCACCAAGCAGTTGC

TGGGACTCCAGCCCATAGCACTGTGTCCCCTTTCATAGAGTCTCCATTACAGTCAAGGC

ACGCGTACGCGGCCGCTCGAGCAGAACTCATCTCAGAAGAGGATCTGGCAGCAATGATATCCTGGATT  
ACAAGGATGACGACGATAAGGTTTAA

**Protein Sequence:**

>RC220444 representing NM\_006437  
Red=Cloning site Green=Tags(s)

MVMGIFANCIFCLKVKYLPQQQKKLQTDIKENGGKFSFSLNPQCTHIIILDNADVL SQYQLNSIQKNHVH  
IANPDFIWKSIREKRLLDVKNYDPYKPLDITPPPDQKASSEVKTEGLCPDSATEEEDTVELTEFGMQNV  
EIPHL PQDFEVAKYNTLEKVGMEGGQEA VVVELQCSRDSRDCPFLISSHFLDDGMETRRQFAIKKTS  
ASEYFENYIEELKKQGFLLREHFTPEATQLASEQLQALLLEEVMNSSTLSQEVSDLVEMIWAEALGHLEH  
MLLKPVNRI SLNDVSKAEGILLVKAALKNGETAEQLQKMMTEFYRLIPHKGTMPKEVNLGLLAKKADLC  
QLIRDMVNV CETNL SKPNPPSLAKYRALRCKIEHVEQNTTEEFLRVRKEVLQNHHSKSPVDVLQIFRVGRV  
NETTEFLSKLGNVRPLLHGSPVQNI VGILCRGLLLPKVVEDRGVQRTDVGNLGSGIYFSDSLSTS  
IKYSH  
PGETDGTLLLLICDVALGKCMDLHEKDFSLTEAPPGYDSVHGVSQTASVTTDFEDEFVYKTNQVKMKY  
I IKFSMPGDQIKDFHPSDHTLEEYRPEFSNF SKVEDYQLPDAKTSSTKAGLQDASGNLVPLEDVHIK  
GRIIDTVAQVIVFQTYTNKSHVPIEAKYIFPLDDKAAVCGFEAFINGKHI VGEIKEEEAQEYLEAVTQ  
G HGAYLMSQDAPDVFVTVSGNLPPKAKVLIKITYITEL SILGTVG VFFMPATVAPWQQDKALNENLQD  
TVE KICIKEIGTKQSFSLTMSIEMPVIEFIFSDTHELQKRTDCKAVISTMEGSSLDSSGFLHIGLSAAYL  
PRMWVEKHPEKESEACMLVFQPDLDVLDPLASESEV IICLDCSSMEGVTFLQAKQITLHALSLVGEKQ  
KVNIIQFGTGYKELFSYPKHITSNTTAAEFIMSATPTMGNTDFWKTLRYLSLLYPARGSRNILLVSDGHL  
QDESLTLQLVKRSRPHTRLFACGIGSTANRHVLRILSQCGAGVFEYFNAKSKHSWRKQIEDQMTRLCSPS  
CHSVSVKWWQQLNPDAPALQAPAQVPSLFRNDRLLVYGFIPHCTQATLICALIQEKEFCMVSTTELQKTT  
GTMIHKLAAARALIRDYEDGILHENETHEMCKQTLKSLIIKLSKENS LITQFTSFVAVEKRDENESFPD  
IPKVS ELIAKEDVDFLPYMSWQGEPEAVRNQSLLASSEWPELRLSKRKHRIKIPFSKRKME LSQPEV  
SEDFEEDGLGVLPAFTSNLERGGVEKLLDL SWTESCKPTATEPLFKKVSPWETSTSSFFPILAPAVG  
SYLPPT ARAHSPASLSFAS YRQVASF GSAAPRQFDASQFSQGPVPGTCADWIPQSASCP  
TGPPQNPPSAPYCGIV FSGSSLSSAQ SAPLQHPGGFTTRPSAGTFPELDSPLHFS  
LPTDPPDIRGFGSYHPSAYS PFHFQPSAAS LTANLRLPMASALPEALCSQSR  
TTPVDLC LLEESVGSLEGSRCPVFAFQSSDTESELDSEVLQDSCFLQI  
KCDTKDDSI PCFLEVKEEDEIVCTQHWQDAVPWTELLSLQTEDGFWKLTPELGLILN  
LNTNGLHSFLKQK GIQSLGVGRECLLDLIATMLVLQFIRTRLEKEGIVFKSLMKMDDASIS  
RNIPWAFEAIKQASEWVRRTE GQYPSICPRLELGNWDWSATKQLLGLQPISTVSPL  
HRVHLHYSQG

TRTRPLEQKLI SEEDLAANDILDYKDDDDKV

**Chromatograms:**

[https://cdn.origene.com/chromatograms/mg4684\\_b01.zip](https://cdn.origene.com/chromatograms/mg4684_b01.zip)

**Restriction Sites:**

Sgfl-MluI

Cloning Scheme:



ACCN: NM\_006437

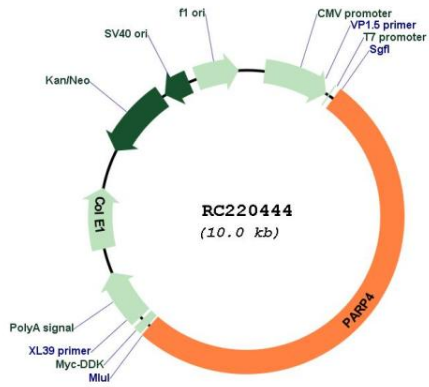
ORF Size: 5172 bp

OTI Disclaimer: Due to the inherent nature of this plasmid, standard methods to replicate additional amounts of DNA in E. coli are highly likely to result in mutations and/or rearrangements. Therefore, OriGene does not guarantee the capability to replicate this plasmid DNA. Additional amounts of DNA can be purchased from OriGene with batch-specific, full-sequence verification at a reduced cost. Please contact our customer care team at [custsupport@origene.com](mailto:custsupport@origene.com) or by calling 301.340.3188 option 3 for pricing and delivery.

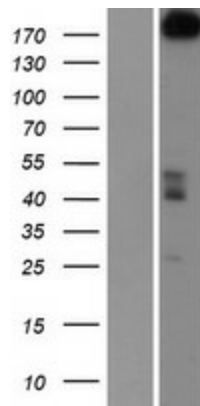
The molecular sequence of this clone aligns with the gene accession number as a point of reference only. However, individual transcript sequences of the same gene can differ through naturally occurring variations (e.g. polymorphisms), each with its own valid existence. This clone is substantially in agreement with the reference, but a complete review of all prevailing variants is recommended prior to use. [More info](#)

<b>OTI Annotation:</b>	This clone was engineered to express the complete ORF with an expression tag. Expression varies depending on the nature of the gene.
<b>Components:</b>	The ORF clone is ion-exchange column purified and shipped in a 2D barcoded Matrix tube containing 10ug of transfection-ready, dried plasmid DNA (reconstitute with 100 ul of water).
<b>Reconstitution Method:</b>	<ol style="list-style-type: none"><li>1. Centrifuge at 5,000xg for 5min.</li><li>2. Carefully open the tube and add 100ul of sterile water to dissolve the DNA.</li><li>3. Close the tube and incubate for 10 minutes at room temperature.</li><li>4. Briefly vortex the tube and then do a quick spin (less than 5000xg) to concentrate the liquid at the bottom.</li><li>5. Store the suspended plasmid at -20°C. The DNA is stable for at least one year from date of shipping when stored at -20°C.</li></ol>
<b>RefSeq Size:</b>	5468 bp
<b>RefSeq ORF:</b>	5175 bp
<b>Locus ID:</b>	143
<b>UniProt ID:</b>	<a href="#">Q9UKK3</a>
<b>Cytogenetics:</b>	13q12.12
<b>Domains:</b>	PARP, BRCT, VWA, VIT
<b>Protein Families:</b>	Druggable Genome
<b>Protein Pathways:</b>	Base excision repair
<b>MW:</b>	192.4 kDa
<b>Gene Summary:</b>	This gene encodes poly(ADP-ribosyl)transferase-like 1 protein, which is capable of catalyzing a poly(ADP-ribosyl)ation reaction. This protein has a catalytic domain which is homologous to that of poly (ADP-ribosyl) transferase, but lacks an N-terminal DNA binding domain which activates the C-terminal catalytic domain of poly (ADP-ribosyl) transferase. Since this protein is not capable of binding DNA directly, its transferase activity may be activated by other factors such as protein-protein interaction mediated by the extensive carboxyl terminus. [provided by RefSeq, Jul 2008]

Product images:



Circular map for RC220444



Western blot validation of overexpression lysate (Cat# [LY416645]) using anti-DDK antibody (Cat# [TA50011-100]). Left: Cell lysates from untransfected HEK293T cells; Right: Cell lysates from HEK293T cells transfected with RC220444 using transfection reagent MegaTran 2.0 (Cat# [TT210002]).