

Product datasheet for **RC220443**

RNASE4 (NM_002937) Human Tagged ORF Clone

Product data:

Product Type: Expression Plasmids
Product Name: RNASE4 (NM_002937) Human Tagged ORF Clone
Tag: Myc-DDK
Symbol: RNASE4
Synonyms: RAB1; RNS4
Mammalian Cell Selection: Neomycin
Vector: pCMV6-Entry (PS100001)
E. coli Selection: Kanamycin (25 ug/mL)
ORF Nucleotide Sequence: >RC220443 ORF sequence
Red=Cloning site Blue=ORF Green=Tags(s)

TTTTGTAATACGACTCACTATAGGGCGCCGGGAATTCGTCGACTGGATCCGGTACCGAGGAGATCTGCC
GCC**CGGATCGCC**

ATGGCTCTGCAGAGGACCCATTCATTGCTTCTGCTTTTGCTGCTGACCCTGCTGGGGCTGGGGCTGGTCC
AGCCCTCTATGGCCAGGATGGCATGTACCAGCGATTCTGCGGCAACACGTGCACCCTGAGGAGACAGG
TGGCAGTGATCGCTACTGCAACTTGATGATGCAAAGACGGAAGATGACTTTGTATCACTGCAAGCGCTTC
AACACCTTCATCCATGAAGATATCTGGAACATTCGTAGTATCTGCAGCACCACCAATATCCAATGAAGA
ACGGCAAGATGAACTGCCATGAGGGTGTAGTGAAGGTCACAGATTGCAGGGACACAGGAAGTTCCAGGGC
ACCCAACCTGCAGATATCGGGCCATAGCGAGCACTAGACGTGTTGTCATTGCTGTGAGGGTAACCCACAG
GTGCCTGTGCACTTTGACGGT

ACGCGTACGCGGCCGCTCGAGCAGAACTCATCTCAGAAGAGGATCTGGCAGCAAATGATATCCTGGATT
ACAAGGATGACGACGATAAGGTTTAA

Protein Sequence: >RC220443 protein sequence
Red=Cloning site Green=Tags(s)
MALQRTSLLLLLLLTLLGLGLVQPSYGQDGMVQRFLRQHVHPEETGGSDRYCNLMMQRRKMTLYHCKRF
NTFIHEDIWNIRSICSTTNIQCKNGKMNCHIEGVKVTDCRDTGSSRAPNCRYRAIASTRRVVIAEGNPQ
VPVHFDG

TRTRPLEQKLISEEDLAANDILDYKDDDDKV

Chromatograms: https://cdn.origene.com/chromatograms/mk6309_d04.zip



[View online >](#)

Restriction Sites: SgfI-MluI

Cloning Scheme:



ACCN: NM_002937

ORF Size: 441 bp

OTI Disclaimer: The molecular sequence of this clone aligns with the gene accession number as a point of reference only. However, individual transcript sequences of the same gene can differ through naturally occurring variations (e.g. polymorphisms), each with its own valid existence. This clone is substantially in agreement with the reference, but a complete review of all prevailing variants is recommended prior to use. [More info](#)

OTI Annotation: This clone was engineered to express the complete ORF with an expression tag. Expression varies depending on the nature of the gene.

Components: The ORF clone is ion-exchange column purified and shipped in a 2D barcoded Matrix tube containing 10ug of transfection-ready, dried plasmid DNA (reconstitute with 100 ul of water).

Reconstitution Method:

1. Centrifuge at 5,000xg for 5min.
2. Carefully open the tube and add 100ul of sterile water to dissolve the DNA.
3. Close the tube and incubate for 10 minutes at room temperature.
4. Briefly vortex the tube and then do a quick spin (less than 5000xg) to concentrate the liquid at the bottom.
5. Store the suspended plasmid at -20°C. The DNA is stable for at least one year from date of shipping when stored at -20°C.

RefSeq: [NM_002937.5](#)

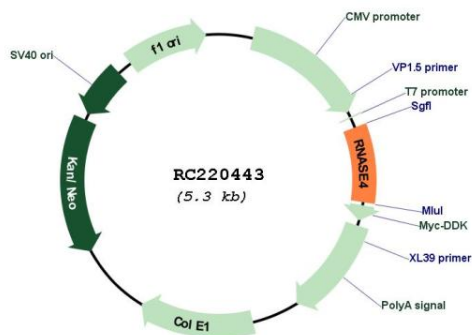
RefSeq Size: 1808 bp

RefSeq ORF: 444 bp

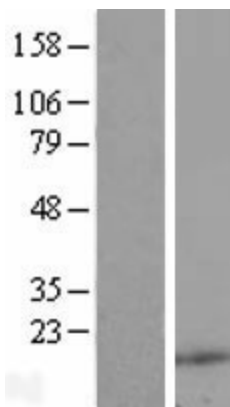
Locus ID: 6038

UniProt ID: [P34096](#)
Cytogenetics: 14q11.2
Domains: RNase_Pc
Protein Families: Secreted Protein, Transmembrane
MW: 16.8 kDa
Gene Summary: The protein encoded by this gene belongs to the pancreatic ribonuclease family. It plays an important role in mRNA cleavage and has marked specificity towards the 3' side of uridine nucleotides. Alternative splicing results in four transcript variants encoding the same protein. This gene and the gene that encodes angiogenin share promoters and 5' exons. Each gene splices to a unique downstream exon that contains its complete coding region. [provided by RefSeq, Aug 2013]

Product images:



Circular map for RC220443



Western blot validation of overexpression lysate (Cat# [LY419001]) using anti-DDK antibody (Cat# [TA50011-100]). Left: Cell lysates from untransfected HEK293T cells; Right: Cell lysates from HEK293T cells transfected with RC220443 using transfection reagent MegaTran 2.0 (Cat# [TT210002]).