

## Product datasheet for **RC220435**

### FCN3 (NM\_003665) Human Tagged ORF Clone

#### Product data:

**Product Type:** Expression Plasmids  
**Product Name:** FCN3 (NM\_003665) Human Tagged ORF Clone  
**Tag:** Myc-DDK  
**Symbol:** FCN3  
**Synonyms:** FCNH; HAKA1  
**Mammalian Cell Selection:** Neomycin  
**Vector:** pCMV6-Entry (PS100001)  
**E. coli Selection:** Kanamycin (25 ug/mL)  
**ORF Nucleotide Sequence:** >RC220435 representing NM\_003665  
 Red=Cloning site Blue=ORF Green=Tags(s)

TTTTGTAATACGACTCACTATAGGGCGGCCGGAATTCGTCGACTGGATCCGGTACCGAGGAGATCTGCC  
 GCC**CGGATCGCC**

ATGGATCTACTGTGGATCCTGCCCTCCCTGTGGCTTCTCCTGCTTGGGGGCCTGCCTGCCTGAAGACCC  
 AGGAACACCCCAGCTGCCAGGACCCAGGGAAGTGAAGCCAGCAAAGTTGTCCTCCTGCCAGTTGTCC  
 CGGAGCTCCAGGAAGTCTGGGGAGAAGGGAGCCCCAGGTCCTCAAGGGCCACCTGGACCACCAGGCAAG  
 ATGGGCCCAAGGGTGAAGCCAGGAGATCCAGTGAACCTGCTCCGGTGCCAGGAAGGCCCCAGAACTGCC  
 GGGAGCTGTTGAGCCAGGGCGCCACCTTGAGCGGCTGGTACCATCTGTGCCTACCTGAGGGCAGGGCCCT  
 CCCAGTCTTTTGTGACATGGACACCGAGGGGGCGGCTGGCTGGTGTTCAGAGGCGCCAGGATGGTTCT  
 GTGGATTTCTCCGCTCTTGGTCTCCTACAGAGCAGTTTTGGGAACCAAGAGTCTGAATTTCTGGCTGG  
 GAAATGAGAATTTGCACCAGTTACTCTCCAGGTAAGTGGGAGCTGCGGGTAGAGCTGGAAGACTTTAA  
 TGGTAACCGTACTTTGCCCCACTATGCGACCTTCCGCCTCCTCGGTGAGGTAGACCACTACCAGCTGGCA  
 CTGGGCAAGTTCTCAGAGGGCACTGCAGGGGATCCCTGAGCCTCCACAGTGGGAGGCCCTTTACCACCT  
 ATGACGCTGACCACGATTCAAGCAACAGCAACTGTGCAGTGATTGCCACGGTGCCTGGTGGTATGCATC  
 CTGTTACCGATCAAATCTCAATGGTCGCTATGCAGTGTCTGAGGCTGCCGCCACAAATATGGCATTGAC  
 TGGGCCCTCAGGCCGTGGTGTGGCCACCCCTACCGCAGGGTTCGGATGATGCTTCA

**ACGCGT**ACGCGGGCCGCTCGAGCAGAAACTCATCTCAGAAGAGGATCTGGCAGCAAATGATATCCTGGATT  
 ACAAGGATGACGACGATAAGGTTTAA



[View online »](#)

**Protein Sequence:** >RC220435 representing NM\_003665  
Red=Cloning site Green=Tags(s)

MDLLWILPSLWLLLLGGPACLKTQEHPSCPGPRELEASKVLLPSCPGAPGSPGEKGAPGPQGGPPGPK  
 MGPKGEPGDPVNLRLCQEGPRNCRELLSQGATLSGWYHLCLPEGRALPVFCMDTEGGWLVFQRRQDGS  
 VDFFRSWSYRAGFGNQESEFWLGNENLHQLTLQGNWELRVELEDFNGNRTFAHYATFRLLGEVDHYQLA  
 LGKFSEGTAGDSLHSGRPFTTYDADHDSSNSNCAVIHGAWWYASCYRSNLNGRYAVSEAAAHKYGID  
 WASGRGVGHPYRRVRMLLR

TRTRPLEQKLISEEDLAANDILDYKDDDDKV

**Restriction Sites:** SgfI-MluI

**Cloning Scheme:**

Cloning sites used for ORF Shuttling:



\* The last codon before the Stop codon of the ORF

**ACCN:** NM\_003665

**ORF Size:** 897 bp

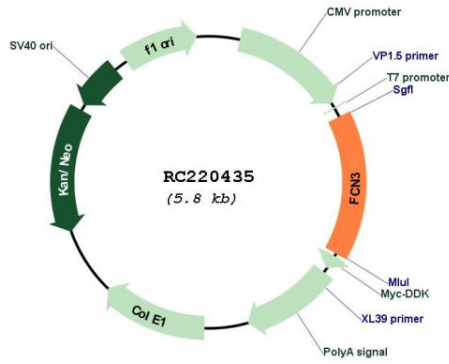
**OTI Disclaimer:** The molecular sequence of this clone aligns with the gene accession number as a point of reference only. However, individual transcript sequences of the same gene can differ through naturally occurring variations (e.g. polymorphisms), each with its own valid existence. This clone is substantially in agreement with the reference, but a complete review of all prevailing variants is recommended prior to use. [More info](#)

**OTI Annotation:** This clone was engineered to express the complete ORF with an expression tag. Expression varies depending on the nature of the gene.

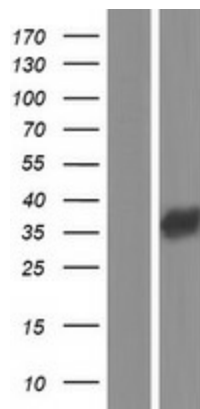
**Components:** The ORF clone is ion-exchange column purified and shipped in a 2D barcoded Matrix tube containing 10ug of transfection-ready, dried plasmid DNA (reconstitute with 100 ul of water).

<b>Reconstitution Method:</b>	<ol style="list-style-type: none"><li>1. Centrifuge at 5,000xg for 5min.</li><li>2. Carefully open the tube and add 100ul of sterile water to dissolve the DNA.</li><li>3. Close the tube and incubate for 10 minutes at room temperature.</li><li>4. Briefly vortex the tube and then do a quick spin (less than 5000xg) to concentrate the liquid at the bottom.</li><li>5. Store the suspended plasmid at -20°C. The DNA is stable for at least one year from date of shipping when stored at -20°C.</li></ol>
<b>RefSeq:</b>	<a href="#">NM_003665.4</a>
<b>RefSeq Size:</b>	1059 bp
<b>RefSeq ORF:</b>	900 bp
<b>Locus ID:</b>	8547
<b>UniProt ID:</b>	<a href="#">O75636</a>
<b>Cytogenetics:</b>	1p36.11
<b>Protein Families:</b>	Druggable Genome, Secreted Protein
<b>MW:</b>	32.9 kDa
<b>Gene Summary:</b>	<p>Ficolins are a group of proteins which consist of a collagen-like domain and a fibrinogen-like domain. In human serum, there are two types of ficolins, both of which have lectin activity. The protein encoded by this gene is a thermolabile beta-2-macroglycoprotein found in all human serum and is a member of the ficolin/opsonin p35 lectin family. The protein, which was initially identified based on its reactivity with sera from patients with systemic lupus erythematosus, has been shown to have a calcium-independent lectin activity. The protein can activate the complement pathway in association with MASPs and sMAP, thereby aiding in host defense through the activation of the lectin pathway. Alternative splicing occurs at this locus and two variants, each encoding a distinct isoform, have been identified. [provided by RefSeq, Jul 2008]</p>

Product images:



Circular map for RC220435



Western blot validation of overexpression lysate (Cat# [LY418514]) using anti-DDK antibody (Cat# [TA50011-100]). Left: Cell lysates from untransfected HEK293T cells; Right: Cell lysates from HEK293T cells transfected with RC220435 using transfection reagent MegaTran 2.0 (Cat# [TT210002]).