

Product datasheet for RC220434

Calcipressin 1 (RCAN1) (NM_004414) Human Tagged ORF Clone

Product data:

Product Type:	Expression Plasmids
Product Name:	Calcipressin 1 (RCAN1) (NM_004414) Human Tagged ORF Clone
Tag:	Myc-DDK
Symbol:	Calcipressin 1
Synonyms:	ADAPT78; CSP1; DSC1; DSCR1; MCIP1; RCN1
Mammalian Cell Selection:	Neomycin
Vector:	pCMV6-Entry (PS100001)
E. coli Selection:	Kanamycin (25 ug/mL)
ORF Nucleotide Sequence:	>RC220434 representing NM_004414 Red=Cloning site Blue=ORF Green=Tags(s)

TTTGTGTAATACGACTCACTATAGGGCGGCCGGAATTCGTCGACTGGATCCGGTACCGAGGAGATCTGCC
 GCCCGCATCGCC

ATGGAGGACGGCGTGGCCGGTCCCCAGCTCGGGGCCGCGCGGAGGCGGCGGAGGCGGCCGAGGCGCGAG
 CGCGGCCCGGGGTGACGCTGCGGCCCTTCGCGCCCCTCTCGGGGCGGCCGAGGCGGACGAGGGCGGCGG
 CGACTGGAGCTTCATTGACTGCGAGATGGAGGAGGTGGACCTGCAGGACCTGCCAGCGCCACCATCGCC
 TGTACCTGGACCCGCGCGTGTTCGTGGACGGCCTGTGCCGGGCCAAATTTGAGTCCCTCTTTAGGACGT
 ATGACAAGGACATCACCTTTCACTATTTTAAGAGCTTCAAACGAGTCAGAATAAACTTCAGCAACCCCTT
 CTCCGCAGCAGATGCCAGGCTCCAGCTGCATAAGACTGAGTTTCTGGGAAAGGAAATGAAGTTATATTTT
 GCTCAGACCTTACACATAGGAAGCTCACACCTGGCTCCGCCAAATCCAGACAAGCAGTTTCTGATCTCCC
 CTCCCGCCTCTCCGCCAGTGGGATGGAACAAGTGGAAGATGCGACCCAGTCATAAACTATGATCTCTT
 ATATGCCATCTCCAAGCTGGGGCCAGGGGAAAAGTATGAATTGCACGCAGCGACTGACACCACTCCCAGC
 GTGGTGGTCCATGTATGTGAGAGTGATCAAGAGAAGGAGGAAGAAGAGGAAATGGAAGAATGAGGAGAC
 CTAAGCCAAAAATTATCCAGACCAGGAGGCCGGAGTACACGCCGATCCACCTCAGC

ACGCGTACGCGGCCGCTCGAGCAGAACTCATCTCAGAAGAGGATCTGGCAGCAAATGATATCTGGATT
 ACAAGGATGACGACGATAAGGTTTAA


[View online »](#)

Protein Sequence: >RC220434 representing NM_004414
 Red=Cloning site Green=Tags(s)

MEDGVAGPQLGAAAEAAEAARARPGVTLRPFAPLSGAAEADGGGDSFIDCEMEEVDLQDLPSATIA
 CHLDPRVFDGLCRKFESLFRITYDKDITFYFKSFKRVIRINFSNPFSAADARLQLHKTEFLGKEMKLYF
 AQTLHIGSSHLAPPNDKQFLISPPASPPVGWKQVEDATPVINYDLLYAI SKLGPGEKYELHAATDTTPS
 VVVHVCESDQEKEEEEEMERMRRPKPKIIQTRRPEYTPIHLS

TRTRPLEQKLISEEDLAANDILDYKDDDDKV

Chromatograms: https://cdn.origene.com/chromatograms/mg4619_h09.zip

Restriction Sites: SgfI-MluI

Cloning Scheme:



ACCN: NM_004414

ORF Size: 756 bp

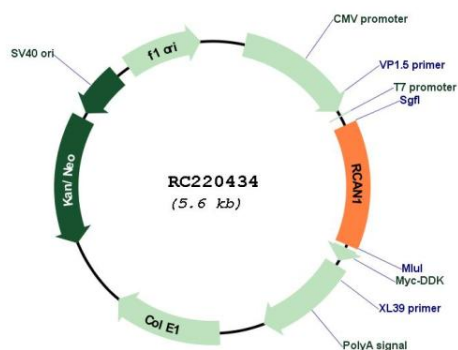
OTI Disclaimer: The molecular sequence of this clone aligns with the gene accession number as a point of reference only. However, individual transcript sequences of the same gene can differ through naturally occurring variations (e.g. polymorphisms), each with its own valid existence. This clone is substantially in agreement with the reference, but a complete review of all prevailing variants is recommended prior to use. [More info](#)

OTI Annotation: This clone was engineered to express the complete ORF with an expression tag. Expression varies depending on the nature of the gene.

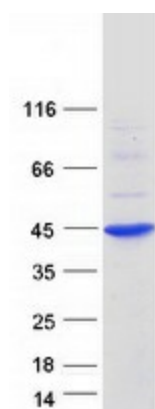
Components: The ORF clone is ion-exchange column purified and shipped in a 2D barcoded Matrix tube containing 10ug of transfection-ready, dried plasmid DNA (reconstitute with 100 ul of water).

Reconstitution Method:	<ol style="list-style-type: none"> 1. Centrifuge at 5,000xg for 5min. 2. Carefully open the tube and add 100ul of sterile water to dissolve the DNA. 3. Close the tube and incubate for 10 minutes at room temperature. 4. Briefly vortex the tube and then do a quick spin (less than 5000xg) to concentrate the liquid at the bottom. 5. Store the suspended plasmid at -20°C. The DNA is stable for at least one year from date of shipping when stored at -20°C.
Note:	Plasmids are not sterile. For experiments where strict sterility is required, filtration with 0.22um filter is required.
RefSeq:	NM_004414.7
RefSeq Size:	2457 bp
RefSeq ORF:	759 bp
Locus ID:	1827
UniProt ID:	P53805
Cytogenetics:	21q22.12
Domains:	Calcipressin
Protein Families:	Transcription Factors
MW:	27.9 kDa
Gene Summary:	<p>The protein encoded by this gene interacts with calcineurin A and inhibits calcineurin-dependent signaling pathways, possibly affecting central nervous system development. This gene is located in the minimal candidate region for the Down syndrome phenotype, and is overexpressed in the brain of Down syndrome fetuses. Chronic overexpression of this gene may lead to neurofibrillary tangles such as those associated with Alzheimer disease. Alternative splicing results in multiple transcript variants. [provided by RefSeq, Nov 2013]</p>

Product images:



Circular map for RC220434



Coomassie blue staining of purified RCAN1 protein (Cat# [TP320434]). The protein was produced from HEK293T cells transfected with RCAN1 cDNA clone (Cat# RC220434) using MegaTran 2.0 (Cat# [TT210002]).