

Product datasheet for **RC220429**

CLSTN2 (NM_022131) Human Tagged ORF Clone

Product data:

Product Type:	Expression Plasmids
Product Name:	CLSTN2 (NM_022131) Human Tagged ORF Clone
Tag:	Myc-DDK
Symbol:	CLSTN2
Synonyms:	ALC-GAMMA; alcagamma; CDHR13; CS2; CSTN2
Mammalian Cell Selection:	Neomycin
Vector:	pCMV6-Entry (PS100001)
E. coli Selection:	Kanamycin (25 ug/mL)



[View online »](#)

ORF Nucleotide Sequence:

>RC220429 representing NM_022131
 Red=Cloning site Blue=ORF Green=Tags(s)

TTTTGTAATACGACTCACTATAGGGCGGCCGGAATTCGTCGACTGGATCCGGTACCGAGGAGATCTGCC
 GCC**CGCATCGCC**

ATGCTGCCTGGGCGGCTGTGCTGGGTGCCGCTCCTGCTGGCGCTGGGCGTGGGGAGCGGCAGCGCGGTG
 GCGGGGACAGCCGCGCAGCGCCGCTCCTCGCGGCTAAAGTCAATAAGCACAAAGCCATGGATCGAGACTTC
 ATATCATGGAGTCATAACTGAGAACAATGACACAGTCATTTTGGACCCACCACTGGTAGCCCTGGATAAA
 GATGCACCGGTTCTTTTGCAGGGGAAATCTGTGCGTTCAAGATCCATGGCCAGGAGCTGCCCTTTGAGG
 CTGTGGTGTCAACAAGACATCAGGAGAGGGCCGCTCCGTGCCAAGAGCCCCATTGACTGTGAGTTGCA
 GAAGGAGTACACATTCATCATCCAGGCCTATGACTGTGGTGTGGGCCCCACGAGACAGCCTGGAAAAAG
 TCACACAAGGCCGTGGTCCATATACAGGTGAAGGATGTCAACGAGTTTGTCCCACCTTCAAAGAGCCAG
 CCTACAAGGCTGTTGTGACGGAGGGCAAGATCTATGACAGCATTCTGCAGGTGGAGGCCATTGACGAGGA
 CTGCTCCCCACAGTACAGCCAGATCTGCAACTATGAAATCGTCACCACAGATGTGCCTTTTCCATCGAC
 AGAAATGGCAACATCAGGAACACTGAGAAGCTGAGCTATGACAAAACAACACCAAGTATGAGATCCTGGTGA
 CCGCTACGACTGTGGACAGAAGCCCGCTGCTCAGGACACCCTGGTGCAGGTGGATGTGAAGCCAGTTTG
 CAAGCCTGGCTGGCAAGACTGGACCAAGAGGATTGAGTACCAGCCTGGCTCCGGGAGCATGCCCTGTTC
 CCCAGCATCCACCTGGAGACGTGCGATGGAGCCGTGTCTTCCCTCCAGATCGTCACAGAGCTGCAGACTA
 ATTACATTGGGAAGGTTGTGACCGGGAGACCTACTCTGAGAAATCCCTTCAAAGTTATGTGGAGCCTC
 CTCTGGCATCATTGACCTTGGCCATCCCTAGCGCTGCCACCACTGGACTGCAGGACTGCTGGTGGAC
 AGCAGTGAGATGATCTTCAAGTTTACGGCAGGAGGGTGCCAAAGTCCCGATGGGATTGTGCCAAGA
 ACCTGACCGATCAGTTCACCATACCATGTGGATGAAACACGGCCCCAGCCCTGGTGTGAGAGCCGAGAA
 GGAAACCATCCTCTGCAACTCAGACAAAACCGAAATGAACCGGCATCACTATGCCCTGTATGTGCACAAC
 TGCCGCTCGTCTTTCTTTCGCGAAGGACTTCGACCAGGCTGACACCTTTCGCCCCGCGGAGTTCCACT
 GGAAGCTGGATCAGATTTGTGACAAAGAGTGGCACTACTATGTCAATGTGGAGTTTCTGTGGTAAAC
 CTTATACATGGATGGAGCAACATATGAACCATACCTGGTACCACGACTGGCCATTATCCATCTCAC
 ATAGCCATGCAACTCACAGTCGGCGCTTGTGGCAAGGAGGAGAAGTACCACCAACAGTTTGTCTCAGT
 TCTTTCATGGAAGCCTGGCCAGTCTCACCATCCGCCCTGGCAAAATGAAAGCCAGAAGGTGATCTCCTG
 CCTGCAGGCTGCAAGGAAGGGCTGGACATTAATCCTTGGAAAGCCTTGGCCAAGGAATAAAGTATCAC
 TTCAACCCCTCGCAGTCCATCCTGGTGTGGAAGGTGACGACATTGGGAACATTAACCGTCTCTCCAGA
 AAGTCTCCTACATCAACTCCAGGAGTTCCCAACGGCGGGTGTGCGGCGCCTCAAAGTATCCTCAAAGT
 CCAAGTCTTTGGGAAGACGTATGCATCAGTATCCCTGAGGTAGATGCCTATGTGATGGTCTCCAGGCC
 ATCGAGCCCCGGATCACCTCCGGGGCACAGACCACTTCTGGAGACCTGTGCCAGTTTAAAAGTGCCA
 GGGGAGTGACCTCTTCCCTGATATCAAGATTGTGAGCACCTTCGCCAAAACCGAAGCCCCGGGGACGT
 GAAAACCACAGACCCCAATCAGAAGTCTTAGAGGAAATGCTTCATAACTTAGATTTCTGTGACATTTTG
 GTGATCGGAGGGGACTTGGACCAAGGCAGGAGTGCTTGGAGCTCAACCACAGTGAGCTCCACCAACGAC
 ACCTGGATGCCACTAATCTACTGCAGGCTACTCCATCTACGGTGTGGGCTCCATGAGCCGCTATGAGCA
 GGTGCTACATCACATCCGCTACCGCAACTGGCGTCCGGCTTCCCTTGGAGCCCGGGTTTCCGGATTAAG
 TGCTCAGAACTCAATGGGCGCTACACTAGCAATGAGTTCAACTTGGAGGTCAGCATCCTTATGAAGACC
 AAGTCTCAGATAAGGAGCATGTCAATCATCTGATTGTGACGCTCCCTTCTCCAGTCTGTCCATCATCC
 TGAGTCCCGGAGTAGCATCCAGCACAGTTCAGTGGTCCCAAGCATTGCCACAGTGGTATCATCATCTCC
 GTGTGCATGCTTGTGTTTGTGCGTGGCCATGGGTGTGTACCGGGTCCGGATCGCCACCAGCACTTATCC
 AGGAGACTGAGGCTGCCAAGGAATCTGAGATGGACTGGGACGATTCTGCGCTGACTATCACAGTCAACCC
 CATGGAGAAACATGAAGGACCAGGGCATGGGAAGATGAGACTGAGGGAGAAGAGGAGGAAGAAGCCGAG
 GAAGAAATGAGCTCCAGCAGTGGCTCTGACGACAGCGAAGAGGAGGAGGAGGAGGAAGGGATGGGCAGAG
 GCAGACATGGGCAGAATGGAGCCAGGCAAGCCAGCTGGAGTGGGATGACTCCACCTCCCTAC

ACGCGTACGCGGCCGCTCGAGCAGAACTCATCTCAGAAGAGGATCTGGCAGCAAATGATATCCTGGATT
 ACAAGGATGACGACGATAAGGTTTAA

Protein Sequence: >RC220429 representing NM_022131
 Red=Cloning site Green=Tags(s)

```
MLPGRLCWVPLLLALGVGSGGGGDSRQRLLAAKVNKHKPWIETSYHGVITENNDTVILDPLVALDK
DAPVPFAGEICAFKIHGQELPFEAVLNTSGEGRLRAKSPIDCELQKEYTFIIQAYDCGAGPHETAWKK
SHKAVVHIQVKDVFAPTFKEPAYKAVVTEGKIYDSILQVEAIDEDCSPQYSQICNYEIVTTDVPFAID
RNGNIRNTEKLSYDKQHQYEILVTAIDCGQKPAAQDTLVQVDVKPVCKPGWQDWTKRIEYQPGSGSMPLF
PSIHLETCDGAVSSLQIVTELQNTYIGKCDRETYSEKSLQKLCGASSGIIDLLPSPAATNWTAGLLVD
SSEMIFKFDGRQGAQVDPGIVPKNLTQFTITMWMKHGSPGVRAEKETILCNSDKTEMNRHHYALVYHN
CRLVFLLRKDFDQADTFRPAEFHWKLDQICDKEWHYVYINVEFPVVTLYMDGATYEPYLVNDWPVHPSH
IAMQLTVGACWQGGVTKPQFAQFFHGLASLTIRPGKMSQKVISCLQACKEGLDINSLES LGQGIKYH
FNPSQSILVMEGDDIGNINRALQKVSYINSRQFPPTAGVRRLLKVSQVCFGEDVCISIPEVDAYVMVLA
IEPRITLRGTDHFWRPAAQFESARGVTLFPDIKIVSTFAKTEAPGDVKTDDPKSEVLEEMLHNLDFCDIL
VIGGDLDPQCELELNHSELHQRHLDATNSTAGYSIYGVGMSRYEQLVHHIRYRNWRPASLEARRFRIK
CSELNGRYTSNEFNLEVSILHEDQVSDKEHVNLIVQPPFLQSVHHPESRSSIQHSSVVPSTATVVIIS
VCMLVFVYVAMGVYRVRIAHQHF IQETEAAKSEMDWDDSALTITVNPMEKHEGPGHGEDETEGEEEEEA
EEMSSSSGSDSEEEEEEGMGRGRHGQNGARQAQLEWDDSTLPY
```

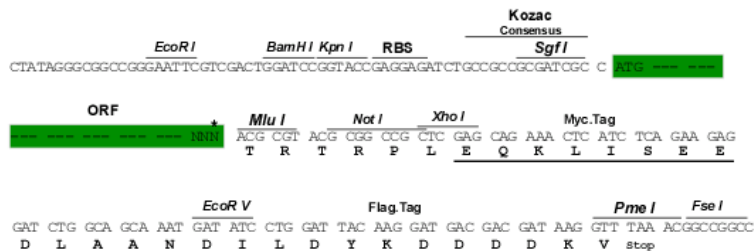
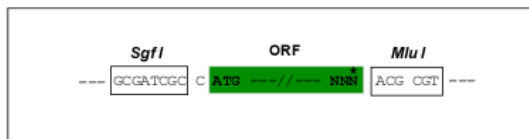
TRTRPLEQKLISEEDLAANDILDYKDDDDKV

Chromatograms: https://cdn.origene.com/chromatograms/mk6204_a08.zip

Restriction Sites: SgfI-MluI

Cloning Scheme:

Cloning sites used for ORF Shuttling:



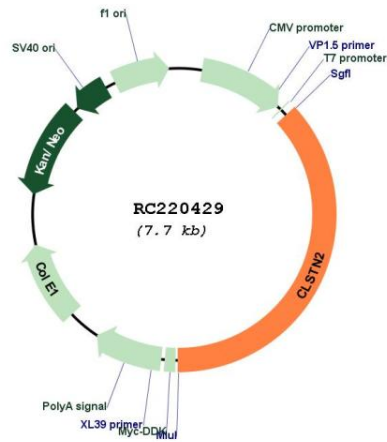
* The last codon before the Stop codon of the ORF

ACCN: NM_022131

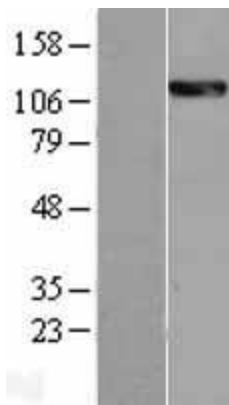
ORF Size: 2865 bp

OTI Disclaimer:	The molecular sequence of this clone aligns with the gene accession number as a point of reference only. However, individual transcript sequences of the same gene can differ through naturally occurring variations (e.g. polymorphisms), each with its own valid existence. This clone is substantially in agreement with the reference, but a complete review of all prevailing variants is recommended prior to use. More info
OTI Annotation:	This clone was engineered to express the complete ORF with an expression tag. Expression varies depending on the nature of the gene.
Components:	The ORF clone is ion-exchange column purified and shipped in a 2D barcoded Matrix tube containing 10ug of transfection-ready, dried plasmid DNA (reconstitute with 100 ul of water).
Reconstitution Method:	<ol style="list-style-type: none">1. Centrifuge at 5,000xg for 5min.2. Carefully open the tube and add 100ul of sterile water to dissolve the DNA.3. Close the tube and incubate for 10 minutes at room temperature.4. Briefly vortex the tube and then do a quick spin (less than 5000xg) to concentrate the liquid at the bottom.5. Store the suspended plasmid at -20°C. The DNA is stable for at least one year from date of shipping when stored at -20°C.
RefSeq:	NM_022131.3
RefSeq Size:	4421 bp
RefSeq ORF:	2868 bp
Locus ID:	64084
UniProt ID:	Q9H4D0
Cytogenetics:	3q23
Protein Families:	Transmembrane
MW:	106.8 kDa
Gene Summary:	May modulate calcium-mediated postsynaptic signals.[UniProtKB/Swiss-Prot Function]

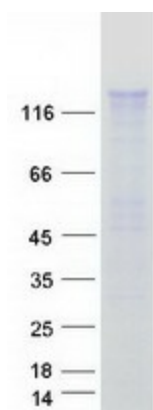
Product images:



Circular map for RC220429



Western blot validation of overexpression lysate (Cat# [LY402909]) using anti-DDK antibody (Cat# [TA50011-100]). Left: Cell lysates from untransfected HEK293T cells; Right: Cell lysates from HEK293T cells transfected with RC220429 using transfection reagent MegaTran 2.0 (Cat# [TT210002]).



Coomassie blue staining of purified CLSTN2 protein (Cat# [TP320429]). The protein was produced from HEK293T cells transfected with CLSTN2 cDNA clone (Cat# RC220429) using MegaTran 2.0 (Cat# [TT210002]).