

## Product datasheet for **RC220405**

### Cullin 4B (CUL4B) (NM\_001079872) Human Tagged ORF Clone

#### Product data:

Product Type:	Expression Plasmids
Product Name:	Cullin 4B (CUL4B) (NM_001079872) Human Tagged ORF Clone
Tag:	Myc-DDK
Symbol:	Cullin 4B
Synonyms:	CUL-4B; MRXHF2; MRXS15; MRXSC; SFM2
Mammalian Cell Selection:	Neomycin
Vector:	pCMV6-Entry (PS100001)
E. coli Selection:	Kanamycin (25 ug/mL)



[View online »](#)

**ORF Nucleotide Sequence:**

>RC220405 representing NM\_001079872  
 Red=Cloning site Blue=ORF Green=Tags(s)

TTTTGTAATACGACTCACTATAGGGCGGCCGGGAATTCGTCGACTGGATCCGGTACCGAGGAGATCTGCC  
 GCC**GCGATCGCC**

ATGTTTCCAACAGGTTTTTCTTCCCCAGTCCCTCAGCTGCTGCTGCTCAGGAGTCCAGATCTGCCA  
 CTGATGGTAATACCAGCACCACTCCGCCACCTCTGCCAAGAAGAGAAAGTTAAACAGCAGCAGCAGTAG  
 CAGCAGTAACAGTAGTAACGAGAGAGAAGACTTTGATTCCACCTCTTCTCCTCTTCCACTCCTCTTTA  
 CAACCCAGGGATTCGGCATCCCCTTCAACCTCGTCTTCTGCCTGGGGTTTCAGTGGTCTTCCAGCC  
 ACGTACCGATACAGAAGAAGCTGCGTTTTGAAGACACCCTGGAGTTTGTAGGTTTGTGCGAAGATGGC  
 TGAGGAATCCTCCTCCTCCTCCTCATCTTACCAACTGCTGCAACATCTCAGCAGCAGCAACTTAAA  
 AATAAGAGTATATTAATCTTCTGTGGCTTCGGTGCATCATGCAAACGGCTAGCCAAATCTTCTACCA  
 CCGTCTCTAGCTTTGCTAACAGCAAACCTGGCTCTGCTAAGAAGTTAGTGATCAAGAAGTTTAAAGATAA  
 GCCTAAATACCAGAAAACCTACACAGATGAAACCTGGCAAAAACGAAAGAAGCAGTGGAAGCTATTCAG  
 AATAGTACTTCAATTAAGTACAATTTAGAAGAAGCTTACCAAGGCTGTAGAAAATCTCTGTTCTTACAAGA  
 TTTCTGCAAACTTGTACAAACAGCTGAGACAGATCTGCGAAGATCACATCAAAGCACAGATTCATCAATT  
 CAGAGAGGATTCATTGGATAGCGTTCTTTTTTAAAGAAGATTGATAGATGCTGGCAAAACCATTGCAGA  
 CAAATGATCATGATCAGGAGCATTTTTTTGTTTCTGGATAGAAGTTACGTTCTTTCAGAAATCAATGCTAC  
 CCTCCATTTGGGACATGGGACTGGAGTTATTTAGGGCTCATATTATAAGTGATCAGAAAGTGCAGAAATA  
 GACAATTGATGGCATTCTTCTCTGATTGAGAGGGAAAGGAATGGTGAAGCAATTGATAGAAGTTTACTT  
 CGAAGCCTTTTAAAGCATGCTGTCTGATTGCAAATTTAACAAGATTCTTTGAACAACGATTTTGAAG  
 AAATAACCGGCTCTATGCAGCTGAAGGCCAAAATTAATGCAAGAAAGAGAGGTTCTGAAATCTACA  
 TCATGTTAACAACAGCTCTAGAAGAAGAAGCAGACAGACTTATTACTTACTTAGATCAGACCACCCAGAAG  
 TCATTAATTGCTACTGTAGAAAAACAATTCTAGGTGAACAATTAAACAGCAATTCTTTCAGAAAGTTTAA  
 ATAACCTCCTTGATGAAAACCGAATTCAGATTTGTCTCTTGTATCAGCTCTTTCAGTAGAGTTTCGAGG  
 TGGAGTTCAGGTTCTTTTGCAGCAGTGGATCGAATATATCAAGGCATTTGGCAGCACTATTGTAATTAAT  
 CCTGAAAAGATAAAAACCATGGTTCAAGAATTGCTGGATTTTAAAGATAAGGTTGACCATATAATTGATA  
 TCTGCTTTCTGAAGAATGAGAAATTTATCAATGCCATGAAAGAAGCATTGAAACGTTTCAATACAAAAG  
 ACCAAATAAACCCAGCTGAACTTATAGCTAAGTATGTAGATTCAAACTTCGTGCAGGCAACAAGAAGCT  
 ACAGATGAAGAAGTTCAGAAAATGTTGGATAAAAATTTATGATCATATTTAGATTTATCTATGGCAAGGATG  
 TTTTGTAGGCCTTCTATAAGAAAGATTTAGCCAAGCGCCTGTTAGTCGGAAAGAGTGCATCTGTAGATGC  
 TGAAAAATCAATGCTGTCCAACTTAAACATGAATGCGGAGCTGCTTTCACCAGCAAACTTGAAGGAATG  
 TTTAAAGACATGGAACTTTCTAAAGACATCATGATTTCAGTTCAAACAGTATATGCAGAATCAGAATGTTT  
 CGGGAAATATTGAGTTAACTGTGAATACTCTGACAATGGGCTATTGGCCGACATATGTGCCTATGGAAGT  
 TCATTTACCACCAGAGATGGTAAAACCTCAGGAGATTTTCAAGACATTTTACCTAGGCAACATAGTGCC  
 AGGAACTTCAGTGGCAGTCAACCCTAGGACACTGTGTGTTAAAAGCAGAATTTAAAGAGGGTAAAAAGG  
 AACTCCAGGCTCTCTTTTTCAAACACTGGTGTGCTAATGTTTAAAGAGGAGAGGTTTCAGTTTAGA  
 AGAGATCAAGCAGGCAACTGGAATAGAGGATGGAGAGTTAAGGAGAACACTGCAGTCAATTAGCCTGTGGC  
 AAAGCTAGAGTTCTGGCGAAAAATCCAAAGGGCAAGACATTGAAGATGGTGACAAGTTCAATTTGTAAATG  
 ATGATTTCAAACATAAACTTTTTCAGGATAAAGATCAATCAATCCAGATGAAAGAACCGTTGAAGAACA  
 AGCAAGCACTACAGAAAGAGTATTTCAAGACAGACAGTATCAAATTTGATGCTGCAATTTGTTGCAATTATG  
 AAGATGAGAAAGACACTTAGCCACAATCTCCTGTTTTCAGAAAGTACAACCAGTTGAAATTTCCAGTAA  
 AGCCTGCTGATCTTAAGAAGAGAATAGAATCTTTAATTGACCGGGACTACATGGAAGAGATAAAGAAAA  
 TCCAAACCACTACAATATTGCA

**ACGCGT**ACGCGGCCGCTCGAGCAGAAAACCTCATCTCAGAAGAGGATCTGGCAGCAATGATATCCTGGATT  
 ACAAGGATGACGACGATAAGGTTTAA

Protein Sequence: >RC220405 representing NM\_001079872  
 Red=Cloning site Green=Tags(s)

```

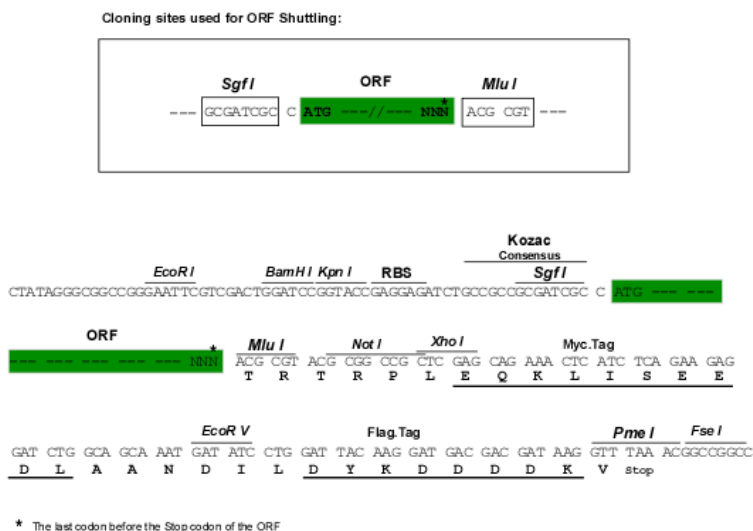
MFPTGFSSPSPSAAAAAQEVRSATDGNTSTTPPTSAKKRKLNSSSSSSSSNSSNEREDFDSTSSSSSTPPL
QPRDSASPSTSSFCLGVSVAASSHVPIQKLRFEDTLEFVGFDAKMAEESSSSSSSSPTAATSQQQLK
NKSILISSVASVHHANGLAKSSSTTVSSFANSKPGSAKKLVIKNFKDKPKLPENYTDQWQLKEAVEAIQ
NSTSIKYNLEEL YQAVENLCSYKISANL YKQLRQICEDHIKAQIHQFREDSLDSVLFLKKIDRCWQNHCR
QMIMIRSIFLFLDRTYVLQNSMLPSIWDMLGLFRAHIIISDQKVNKTIIDGILLI IERERNGEAI DRSL
RSLLSMLSDLQIYQDSFEQRFL EETNRL YAAEQQLMQEREVPEYLHHVKNRLEEADRLITYLDQTTQK
SLIATVEKQLLGEHLT AILQKGLNLLDENRIQDL SLLYQLFSRVRGGVQVLLQQWIEYIKAFGSTIVIN
PEKDKTMQELLDFKDKVDHI IDICFLKNEKFINAMKEAFETFINKRPNKPAELIAKYVDSKLRAGNKEA
TDEELEKMLDKIMII FRFIYGKDVFEAFYKDLAKRLL VGKSASVDAEKSM LSKLKHECGAFTSKLEGM
FKDMELSKDIMIQFKQYMQNQNVPGNIELTVNIL TMGYWPTYVPMVHLPPMVKLQEIFKTFYLGKHS
RKLQWQSTLGHCVLKAEFKEGKELQVSLFQTLVLLMFNEGEESLEEIKQATGIEDGELRRTLQSLACG
KARVLAKNPKGKDIEDGDKFICNDDFKHLFRIKINQIQMKETVEEQASTTERVFQDRQYIDAAIVRIM
KMRKTLSHNLLVSEVYNQLKFPVKPADLKKRIESLIDRDYMERDKENPNQYNYIA
    
```

TRTRPLEQKLISEEDLAANDILDYKDDDDKV

Restriction Sites:

Sgfl-MluI

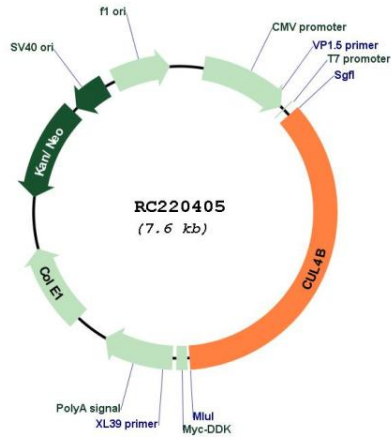
Cloning Scheme:



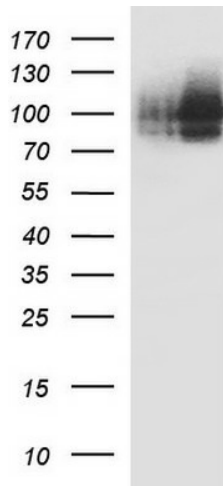
ACCN: NM\_001079872

<b>ORF Size:</b>	2685 bp
<b>OTI Disclaimer:</b>	The molecular sequence of this clone aligns with the gene accession number as a point of reference only. However, individual transcript sequences of the same gene can differ through naturally occurring variations (e.g. polymorphisms), each with its own valid existence. This clone is substantially in agreement with the reference, but a complete review of all prevailing variants is recommended prior to use. <a href="#">More info</a>
<b>OTI Annotation:</b>	This clone was engineered to express the complete ORF with an expression tag. Expression varies depending on the nature of the gene.
<b>Components:</b>	The ORF clone is ion-exchange column purified and shipped in a 2D barcoded Matrix tube containing 10ug of transfection-ready, dried plasmid DNA (reconstitute with 100 ul of water).
<b>Reconstitution Method:</b>	<ol style="list-style-type: none"><li>1. Centrifuge at 5,000xg for 5min.</li><li>2. Carefully open the tube and add 100ul of sterile water to dissolve the DNA.</li><li>3. Close the tube and incubate for 10 minutes at room temperature.</li><li>4. Briefly vortex the tube and then do a quick spin (less than 5000xg) to concentrate the liquid at the bottom.</li><li>5. Store the suspended plasmid at -20°C. The DNA is stable for at least one year from date of shipping when stored at -20°C.</li></ol>
<b>RefSeq:</b>	<a href="#">NM_001079872.2</a>
<b>RefSeq Size:</b>	5198 bp
<b>RefSeq ORF:</b>	2688 bp
<b>Locus ID:</b>	8450
<b>UniProt ID:</b>	<a href="#">Q13620</a>
<b>Cytogenetics:</b>	Xq24
<b>Protein Pathways:</b>	Nucleotide excision repair, Ubiquitin mediated proteolysis
<b>MW:</b>	102.1 kDa
<b>Gene Summary:</b>	This gene is a member of the cullin family. The encoded protein forms a complex that functions as an E3 ubiquitin ligase and catalyzes the polyubiquitination of specific protein substrates in the cell. The protein interacts with a ring finger protein, and is required for the proteolysis of several regulators of DNA replication including chromatin licensing and DNA replication factor 1 and cyclin E. Multiple transcript variants encoding different isoforms have been found for this gene. [provided by RefSeq, Jul 2008]

Product images:



Circular map for RC220405



HEK293T cells were transfected with the pCMV6-ENTRY control (Cat# [PS100001], Left lane) or pCMV6-ENTRY CUL4B (Cat# RC220405, Right lane) cDNA for 48 hrs and lysed. Equivalent amounts of cell lysates (5 ug per lane) were separated by SDS-PAGE and immunoblotted with anti-CUL4B (Cat# [TA590752]).