

## Product datasheet for **RC220401**

### **FBXL18 (NM\_024963) Human Tagged ORF Clone**

#### **Product data:**

Product Type:	Expression Plasmids
Product Name:	FBXL18 (NM_024963) Human Tagged ORF Clone
Tag:	Myc-DDK
Symbol:	FBXL18
Synonyms:	Fbl18
Mammalian Cell Selection:	Neomycin
Vector:	pCMV6-Entry (PS100001)
E. coli Selection:	Kanamycin (25 ug/mL)



[View online »](#)

**ORF Nucleotide  
Sequence:**

>RC220401 representing NM\_024963  
 Red=Cloning site Blue=ORF Green=Tags(s)

TTTTGTAATACGACTCACTATAGGGCGGCCGGAATTCGTCGACTGGATCCGGTACCGAGGAGATCTGCC  
 GCC**CGATCGCC**

ATGCCAGCTCCGGAGAGACATATCCAATGATGATGATGACATGCACCCTGCAGCAGCCGGATGGCAG  
 ACGGGTCCACCTCCTAGGGTTCTCTGATGAGATCCTCCTTACATCCTGAGTCAGTCCCCAGCACAGA  
 TCTGATTCTGAACGTCCGGCGTACCTGTGGAAGCTTGCAGCCCTGTGCCTTGACAAGAGCCTCATCCAC  
 ACCGTGTTGCTGCAAAAGGACTATCAGGCGAGCGAGGACAAAGTGAGGCAGCTGGTGAAGGAGATCGGCC  
 GGGAGATCCAGCAGCTGAGCATGGCTGGCTGCTACTGGCTGCCTGGCTCCACCGTGAACACGTGGCCCG  
 CTGCCGACGCTGGTGAAGGTGAACCTCTCGGGCTGCCACCTCACTTCCCTGCGCCTCTCCAAGATGCTC  
 TCGGCCCTGCAGCACCTGCGCTCGCTGGCCATCGACGTGAGCCCCGGCTTCGACGCCAGCCAGCTGAGCA  
 GCGAGTGAAGGCCACCCTGAGCCGCGTGGGGAGCTCAAGCAGACGCTGTTCACTCCCTCTACGGCGT  
 GGTGCCCTGCTGCACCAGCTAGAGAAGCTGCTGCTACTTCGAGATTCTGGACCGCACGCGGAGGGC  
 GCCATCCTCTCGGGCCAGCTTATGGTGGCCAGAGCAACGTGCCCACTACCAGAACCTGCGGGTCTTCT  
 ATGCGCGCTGGCCCCGGCTACATCAACCAGGAGGTGGTGGCGCTTACCTGGCTGTGCTTAGCGACCG  
 CACTCCTCAGAACCTCCACGCCTTCTCATCTCCGTCCCTGGCAGCTTCGCGGAGAGCGGCCACCAAG  
 AACCTCCTGGACTCCATGGCGCGCAATGTCGTGCTGGATGCCCTGCAGCTGCCAAAGTCTGGTGAACG  
 GCTTTCCTCCTGCAGCACATGAAATTAACAACCCGTTCTACTTCAGTTTCAGCCGCTGTACCCTGTC  
 AGCGGCCATCTGATCCAGCAGTCAACCGCGGGAAGGACCTGCGGAGCCTGGCCAGCTTGAACCTC  
 AGCGGCTGCGTCCACTGCCTGTCCCCAGACTCGCTGCTCCGAAGGCGGAGGACGACATGCACAGCAGCA  
 TCCTGGAGACTCTGGTGGCTCCTGCTGCAACCTGCGCCACCTGAACCTCTCGGCCGCCACCACACAG  
 CTCGGAGGGCCTGGGCCGCCACCTCTGCCAGCTCCTGGCCGGCTGCGTCACTGCGCTCCCTCTCCCTG  
 CCTGTCTGCTCTGTGCTGACTCCGCGCGCGCGCCGACCGCGCGCCCGCCAGCCGCGCCATGCACGCGAG  
 TGCCGCGCGGCTTTGGCAAGAAAGTGCCTGTGGGCGTGCAGTCCGTGCCAGCCCCTTCTCGGGCCAGGC  
 GTGCCCCAGCCCTCCTCCGTGTTCTGGTCTCTGCTGAAGAACCTGCCCTTCTGGAACACCTCGAGCTG  
 ATTGGGTCCAATTCTCCTCCGCATGCCCGCAACGAGCCCGCCATCCGCAACTCGTCCACCCTGCA  
 GCCGCGCACAGAGTGTGGGGACTCGGAGGTGGCCGCCATCGGCCAGCTGGCCTTCTGCGGCACCTGAC  
 GCTCGCACAGCTGCCAGCGTCTTACGGGCTCCGGGCTGGTCAATATCGGCCTGCAGTCCAGCAGTTG  
 CGGTCCCTGTGCTGGCCAACTGGGCATGATGGGAAGGTGGTGTACATGCCCGCGCTCTCAGACATGT  
 TGAAGCACTGCAAGCGGCTGAGGACCTCAGGCTGGAGCAGCCCTACTTCAGCGCAACGCCAGTTCTT  
 CCAGGCGCTGAGCCAGTGCCTCGCTGCAGCGCTGTGCTGGTCTCTCGCAGCGGCACCTCCAGCCC  
 GATGCCGTGCTGGCCTCATGGCTCGCTGCCTGCAGGTTGTCATGTGCCACCTGTTACCGGGGAGTCCC  
 TCGCCACCTGCAAGAGCCTGCAGCAGTCTTCTCCGAGCTTCCAGGCCGAGCGGCCCGGTTAAACGT  
 CGTCATCTCCCTCTGCTCCACGAGGGCCTGACCGACGTCATCCGGGACGTCCCTGGTGCACCTGGAT  
 GAGATCACCTATTTAAGAGCAGAGTGGCCGAGGAACCGCGAACCTGTGGTGG

**ACGCGT**ACGCGGCCGCTCGAGCAGAACTCATCTCAGAAGAGGATCTGGCAGCAAATGATATCCTGGATT  
 ACAAGGATGACGACGATAAGGTTTAA

**Protein Sequence:** >RC220401 representing NM\_024963  
Red=Cloning site Green=Tags(s)

```

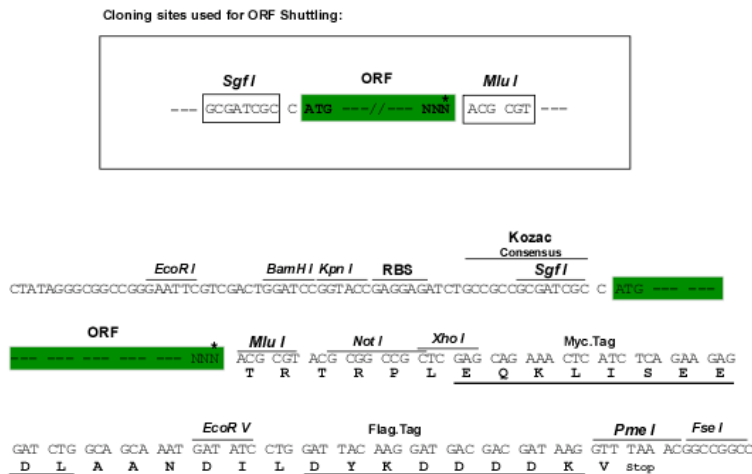
MASSGEDISNDDDDMHPAAAGMADGVHLLGFSDIILLHILSHVPSTDILNVRRTCRKLAALCLDKSLIH
TVLLQKDYQASEDKVRQLVKEIGREIQQLSMAGCYWLPGSTVEHVARCRSLVKVNL SGCHLTSRLSKML
SALQHLRSLAIDVSPGFDAQSLSECKATLSRVRELKQTLFPTSYGVVPCCTSLEKLLL YFEILDRTREG
AILSGQLMVGQSNVPHYQNLRVFYARLAPGYINQEVVRLYLAVLSDRTPQNLHAFLLISVPGSFAESGATK
NLLDSMARNVVLDALQLPKSWLNGSSLLQHMKFNNPFYFYSRCTL SGGHLIQQVINGGKDLRSLASLNL
SGCVHCLSPDSLRLKAEDDIDSSILETLVASCNLRHLNLSAAHHHSSEGLGRHLCQLLARLRHLRSLSL
PVCSVADSAPRADRAPAQAMHAVPRGF GKKVVRVGVQSCSPFSGQACQPSSVFWSLKLNLPFLEHLEL
IGSNFSSAMPRNEPAIRNSLPPCSRAQSVGDSEVAAIGQLAFRLHLTLAQLPSVLTG SGLVNIIGLQCQQ
RSLSLANLGMGKVVYPALSDMLKHCKRLRDLRL EQPYFSANAQFFQALSQCPSLQRLCLVSRSGTLQP
DAVLAFMARCLQVVMCHLFTGESLATCKSLQSSLRSFQAERPALN VVIFPLLHEGLTDVIRDVPLVHLD
EITLFKSRVAEPPNLWW
    
```

TRTRPLEQKLI SEEDLAANDILDYKDDDDKV

**Chromatograms:** [https://cdn.origene.com/chromatograms/mk8020\\_a11.zip](https://cdn.origene.com/chromatograms/mk8020_a11.zip)

**Restriction Sites:** SgfI-MluI

**Cloning Scheme:**



\* The last codon before the Stop codon of the ORF

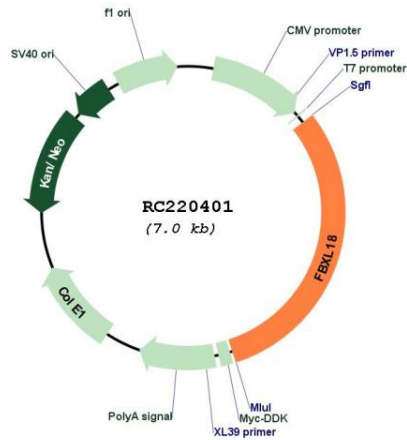
**ACCN:** NM\_024963

**ORF Size:** 2154 bp

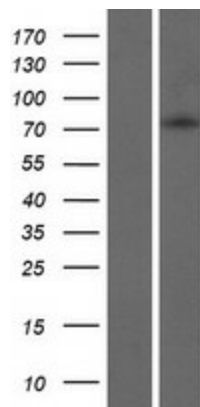
**OTI Disclaimer:** The molecular sequence of this clone aligns with the gene accession number as a point of reference only. However, individual transcript sequences of the same gene can differ through naturally occurring variations (e.g. polymorphisms), each with its own valid existence. This clone is substantially in agreement with the reference, but a complete review of all prevailing variants is recommended prior to use. [More info](#)

**OTI Annotation:** This clone was engineered to express the complete ORF with an expression tag. Expression varies depending on the nature of the gene.

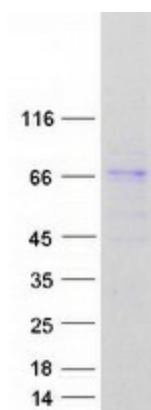
<b>Components:</b>	The ORF clone is ion-exchange column purified and shipped in a 2D barcoded Matrix tube containing 10ug of transfection-ready, dried plasmid DNA (reconstitute with 100 ul of water).
<b>Reconstitution Method:</b>	<ol style="list-style-type: none"><li>1. Centrifuge at 5,000xg for 5min.</li><li>2. Carefully open the tube and add 100ul of sterile water to dissolve the DNA.</li><li>3. Close the tube and incubate for 10 minutes at room temperature.</li><li>4. Briefly vortex the tube and then do a quick spin (less than 5000xg) to concentrate the liquid at the bottom.</li><li>5. Store the suspended plasmid at -20°C. The DNA is stable for at least one year from date of shipping when stored at -20°C.</li></ol>
<b>RefSeq:</b>	<a href="#">NM_024963.6</a>
<b>RefSeq Size:</b>	8253 bp
<b>RefSeq ORF:</b>	2157 bp
<b>Locus ID:</b>	80028
<b>Cytogenetics:</b>	7p22.1
<b>Domains:</b>	F-box
<b>Protein Families:</b>	Druggable Genome
<b>MW:</b>	78.7 kDa
<b>Gene Summary:</b>	The protein encoded by this gene is a member of a family of proteins that contain an approximately 40-amino acid F-box motif. This motif is important for interaction with SKP1 and for targeting some proteins for degradation. The encoded protein has been shown to control the cellular level of FBXL7, a protein that induces mitotic arrest, by targeting it for polyubiquitylation and proteasomal degradation. Members of the F-box protein family, such as FBXL18, are characterized by an approximately 40-amino acid F-box motif. F-box proteins interact with SKP1 through the F box, and they interact with ubiquitination targets through other protein interaction domains. [provided by RefSeq, Mar 2016]

**Product images:**


Circular map for RC220401



Western blot validation of overexpression lysate (Cat# [LY410959]) using anti-DDK antibody (Cat# [TA50011-100]). Left: Cell lysates from untransfected HEK293T cells; Right: Cell lysates from HEK293T cells transfected with RC220401 using transfection reagent MegaTran 2.0 (Cat# [TT210002]).



Coomassie blue staining of purified FBXL18 protein (Cat# [TP320401]). The protein was produced from HEK293T cells transfected with FBXL18 cDNA clone (Cat# RC220401) using MegaTran 2.0 (Cat# [TT210002]).