

Product datasheet for **RC220393**

Cytokeratin 18 (KRT18) (NM_000224) Human Tagged ORF Clone

Product data:

Product Type:	Expression Plasmids
Product Name:	Cytokeratin 18 (KRT18) (NM_000224) Human Tagged ORF Clone
Tag:	Myc-DDK
Symbol:	Cytokeratin 18
Synonyms:	CK-18; CYK18; K18
Mammalian Cell Selection:	Neomycin
Vector:	pCMV6-Entry (PS100001)
E. coli Selection:	Kanamycin (25 ug/mL)



[View online »](#)

ORF Nucleotide Sequence:

>RC220393 representing NM_000224
 Red=Cloning site Blue=ORF Green=Tags(s)

TTTTGTAATACGACTCACTATAGGGCGGCCGGAATTCGTCGACTGGATCCGGTACCGAGGAGATCTGCC
 GCC**CGGATCGCC**

ATGAGTTCACTACTCGCTCCACCTTCTCCACCAACTACCGGTCCTGGGCTCTGTCCAGGCGCCAGCT
 ACGGCGCCCGGCCGGTACGACAGCGGCCAGCGTCTATGCAGGCGCTGGGGCTCTGGTTCCCGGATCTC
 CGTGTCGCCGCTCCACCAGCTTACGGGGCGGCATGGGGTCCGGGGGCTGGCCACCGGGATAGCCGGGGT
 CTGGCAGGAATGGGAGGCATCCAGAACGAGAAGGAGACCATGCAAAGCCTGAACGACCGCTGGCCTCTT
 ACCTGGACAGAGTGAGGAGCCTGGAGACCAGAACCGGAGGCTGGAGAGCAAAATCCGGGAGCACTTGA
 GAAGAAGGACCCAGGTCAGAGACTGGAGCCATTACTTCAAGATCATCGAGGACCTGAGGGCTCAGATC
 TTCGAAATACTGTGGACAATGCCCGCATCGTTCTGCAGATTGACAATGCCCGTCTTGCTGCTGATGACT
 TTAGAGTCAAGTATGAGACAGAGCTGGCCATGCCCGAGTCTGTGGAACGACATCCATGGGCTCCGCA
 GGTCAATTGATGACACCAATATCACAGACTGCAGCTGGAGACAGAGATCGAGGCTCTCAAGGAGGAGCTG
 CTCTTCATGAAGAAGAACCACGAAGAGGAAGTAAAGGCCCTACAAGCCAGATTGCCAGCTCTGGGTGA
 CCGTGGAGGTAGATGCCCCAAATCTCAGGACCTCGCCAAGATCATGGCAGACATCCGGGCCCAATATGA
 CGAGCTGGCTCGGAAGAACCAGAGGAGCTAGACAAGTACTGGTCTCAGCAGATTGAGGAGAGCACCACA
 GTGGTCACCACACAGTCTGCTGAGGTTGGAGCTGCTGAGACGACGCTCACAGAGCTGAGACGTACAGTCC
 AGTCTTTGGAGATCGACCTGGACTCCATGAGAAATCTGAAGGCCAGCTTGGAGAACAGCCTGAGGGAGGT
 GGAGGCCCGCTACGCCCTACAGATGGAGCAGCTCAACGGGATCCTGCTGCACCTTGAGTCAGAGCTGGCA
 CAGACCCGGGCAGAGGGACAGCGCCAGGCCAGGAGTATGAGGCCCTGCTGAACATCAAGGTCAAGCTGG
 AGGCTGAGATCGCCACCTACCGCCGCTGCTGGAAGATGGCGAGGACTTAACTCTGGTGATGCCTTGA
 CAGCAGCAACTCCATGCAAACCATCCAAAAGACCACCCCGCGGATAGTGGATGGCAAAGTGGTGTCT
 GAGACCAATGACACCAAAGTTCTGAGGCAT

ACGCGTACGCGGCCGCTCGAGCAGAACTCATCTCAGAAGAGGATCTGGCAGCAATGATATCCTGGATT
 ACAAGGATGACGACGATAAGGTTTAA

Protein Sequence:

>RC220393 representing NM_000224
 Red=Cloning site Green=Tags(s)

MSFTTRSTFSTNYRSLGSVQAPSYGARPVSSAASVYAGAGGSGSRSISVSRSTSFRRGMGSGGLATGIAGG
 LAGMGGIQNEKETMQSLNDRLASYLDRVRSLETENRRLESKIREHLEKKGQVRDWSHYFKIIEDLRAQI
 FANTVDNARIVLQIDNARLAADDFRVKYETELAMRQSVENDIHGLRKVIDDTNITRLQLETEIEALKEEL
 LFMKKNHEEEVKGLQAQIASSGLTVEVDAPKSQDLAKIMADIRAQYDELARKNREELDKYWSQQIEESTT
 VVTTQSAEVGAAETTLTELRRTVQSLEIDLDSMRNLKASLENSLREVEARYALQMEQLNGILLHLESELA
 QTRAEGRQAQEQYEALLNIKVKLEAEIATYRRLLEDGEDFNLDALDSSNSMQTIQKTTTRRIVDGKVV
 ETNDTKVLRH

TRTRPLEQKLISEEDLAANDILDYKDDDDKV

Chromatograms:

https://cdn.origene.com/chromatograms/mk6043_a10.zip

Restriction Sites:

SgfI-MluI

Cloning Scheme:

ACCN: NM_000224

ORF Size: 1290 bp

OTI Disclaimer: The molecular sequence of this clone aligns with the gene accession number as a point of reference only. However, individual transcript sequences of the same gene can differ through naturally occurring variations (e.g. polymorphisms), each with its own valid existence. This clone is substantially in agreement with the reference, but a complete review of all prevailing variants is recommended prior to use. [More info](#)
OTI Annotation: This clone was engineered to express the complete ORF with an expression tag. Expression varies depending on the nature of the gene.

Components: The ORF clone is ion-exchange column purified and shipped in a 2D barcoded Matrix tube containing 10ug of transfection-ready, dried plasmid DNA (reconstitute with 100 ul of water).

Reconstitution Method:

1. Centrifuge at 5,000xg for 5min.
2. Carefully open the tube and add 100ul of sterile water to dissolve the DNA.
3. Close the tube and incubate for 10 minutes at room temperature.
4. Briefly vortex the tube and then do a quick spin (less than 5000xg) to concentrate the liquid at the bottom.
5. Store the suspended plasmid at -20°C. The DNA is stable for at least one year from date of shipping when stored at -20°C.

RefSeq: [NM_000224.3](#)
RefSeq Size: 1485 bp

RefSeq ORF: 1293 bp

Locus ID: 3875

UniProt ID: [P05783](#)
Cytogenetics: 12q13.13

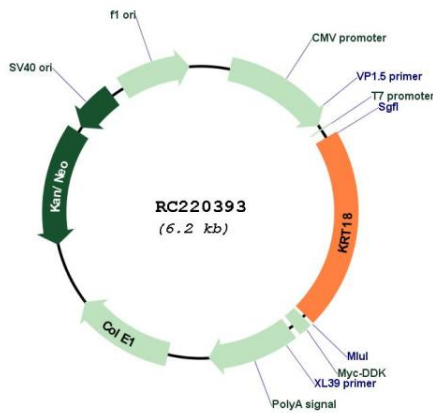
Domains: filament

Protein Pathways: Pathogenic Escherichia coli infection

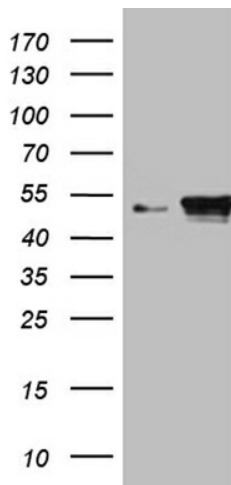
MW: 47.9 kDa

Gene Summary: KRT18 encodes the type I intermediate filament chain keratin 18. Keratin 18, together with its filament partner keratin 8, are perhaps the most commonly found members of the intermediate filament gene family. They are expressed in single layer epithelial tissues of the body. Mutations in this gene have been linked to cryptogenic cirrhosis. Two transcript variants encoding the same protein have been found for this gene. [provided by RefSeq, Jul 2008]

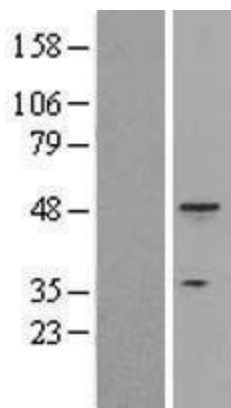
Product images:



Circular map for RC220393



HEK293T cells were transfected with the pCMV6-ENTRY control (Cat# [PS100001], Left lane) or pCMV6-ENTRY KRT18 (Cat# RC220393, Right lane) cDNA for 48 hrs and lysed. Equivalent amounts of cell lysates (5 ug per lane) were separated by SDS-PAGE and immunoblotted with anti-KRT18 (Cat# [TA807029])(1:2000). Positive lysates [LY400083] (100ug) and [LC400083] (20ug) can be purchased separately from OriGene.



Western blot validation of overexpression lysate (Cat# [LY400083]) using anti-DDK antibody (Cat# [TA50011-100]). Left: Cell lysates from untransfected HEK293T cells; Right: Cell lysates from HEK293T cells transfected with RC220393 using transfection reagent MegaTran 2.0 (Cat# [TT210002]).