

Product datasheet for **RC220380**

TTYH1 (NM_020659) Human Tagged ORF Clone

Product data:

Product Type:	Expression Plasmids
Product Name:	TTYH1 (NM_020659) Human Tagged ORF Clone
Tag:	Myc-DDK
Symbol:	TTYH1
Mammalian Cell Selection:	Neomycin
Vector:	pCMV6-Entry (PS100001)
E. coli Selection:	Kanamycin (25 ug/mL)



[View online »](#)

ORF Nucleotide Sequence:

>RC220380 representing NM_020659
 Red=Cloning site Blue=ORF Green=Tags(s)

TTTTGTAATACGACTCACTATAGGGCGGCCGGGAATTCGTCGACTGGATCCGGTACCGAGGAGATCTGCC
 GCC**CGGATCGCC**

ATGGGGGCGCCCCGGGCTACCGCCCTCAGCTTGGGTGCATCTCTCCACCAGCTGCCCGCGCCGACT
 TCCAGCTCCGCCCGGTGCCAGCGTTTTTCGCGCCCAAGAGCAGGAATACCAGCAGGCCTTGTGCTGGT
 GGCGCCCTTGGCGGGCTGGGCTTGGGCTGAGCCTATTTTCATCGCTGTCTACCTCATCCGCTTCTGC
 TGCTGCCGGCCCCGAGCCCCCGGGTCCAAGATCCCCTCGCCCGGGGAGGCTGCGTCACCTGGAGCT
 GCATTGTCGCCCTTCTCGCCGGTGCAGTGGCATTGGCATCGGTTTCTATGGCAACAGTGAGACCAGTGA
 TGGGGTGTCCAGCTCAGCTCTGCGCTGCTGCACGCCAACACACTCAGCACCATTGACCACCTGGTG
 TTGGAGACGGTGGAGAGGCTGGGCGAGGCGGTGAGGACAGAGCTGACCACCCTGGAGGAGGTGCTCGAGC
 CGCGCACGGAGCTGGTGGCTGCCCGCCGAGGGCTCGACGGCAGGCGGAGGCTGCGGCCACGAGCTGCA
 GGGGCTGGCCTTCTGGCAGGGAGTGCCCTGAGCCCCCTGCAGGTGGCTGAAAATGTGTCCTTTGTGGAG
 GAGTACAGGTGGCTGGCCTACGTCTCTGCTGCTCTGGAGCTGCTGGTCTGCCTTTACCCCTCTGG
 GCCTGGCGAAGCAGAGCAAGTGGCTGGTATCGTGATGACAGTCATGAGTCTCTGGTTCTGCTCTGAG
 CTGGGGCTCCATGGGCTGGAGGCAGCCACGGCGTGGGCTCAGTGACTTCTGCTCCAATCCAGACCT
 TATGTTCTGAACCTGACCAGGAGGAGACAGGGCTCAGCTCAGACATCCTGAGCTATTATCTCTCTGCA
 ACCGGGCCGTCTCAACCCCTTCCAACAGAGGCTGACTCTGTCCAGCGAGCTCTGGCCAACATCCACTC
 CCAGCTGCTGGGCTGGAGCGAGAAGCTGTGCCTCAGTCCCTCAGCGCAGAAGCCTCTGCTGTCTTG
 GAGGAGACTCTGAATGTGACAGAAGGAAATTTCCACCAGTTGGTGGCACTGCTACACTGCCGAGCCTGC
 ACAAGGACTATGGTGCAGCCCTCGGGGCTGTGCGAAGACGCCCTGGAAGGCTGCTCTTCTGCTACT
 CTCTCCCTGCTGTCTGACAGGAGCGCTGGCCACTGCCCTCTGCAGCCTGCCCGAGCCTGGGCCCTCTTC
 CCACCCAGTGACGACTACGATGACACAGACGATGACGACCCTTTCAACCTCAGGAATCCAAGCGCTTTG
 TGCAGTGGCAGTCGTCTATC

ACGCGTACGCGGCCGCTCGAGCAGAACTCATCTCAGAAGAGGATCTGGCAGCAAATGATATCTGGATT
 ACAAGGATGACGACGATAAGGTTTAA

Protein Sequence:

>RC220380 representing NM_020659
 Red=Cloning site Green=Tags(s)

MGAPPGYRPSAWVHLHQLPRADFQLRPVPSVFAPEQEYQQALLLVAALAGLGLSLIFIAVYLIRFC
 CCRPPEPPGSKIPSPGGCVTWSCIVALLAGCTGIGIFYGNSETSDGVSQSSALLHANHTLSTIDHLV
 LETVERLGEAVRTELTTLEEVLEPRTEL VAAARGARRQAEAAAQQLQGLAFWQGVPLSPLQVAENVSFVE
 EYRWLAYVLLLLLELLVCLFTLLGLAKQSKWLVIMTVMSLLVLVLSWGSMLAATAVGLSDFCSNPDP
 YVLNLTQEETGLSSDILSYLLCNRAVSNPFQQRLLTSLQRALANIHSQLLGLEREAVPQFPPSAQKPLL
 EETLNVTEGNFHQLVALLHCRSLHKDYGAALRGLCEDALEGLLFLLLFSLLSAGALATALCSLPRAWALF
 PPSDDYDDTDDDDPFNPQESKRFFVQWQSSI

TRTRPLEQKLISEEDLAANDILDYKDDDDKV

Chromatograms:

https://cdn.origene.com/chromatograms/mk8010_c11.zip

Restriction Sites:

SgfI-MluI

Cloning Scheme:


ACCN: NM_020659

ORF Size: 1350 bp

OTI Disclaimer: The molecular sequence of this clone aligns with the gene accession number as a point of reference only. However, individual transcript sequences of the same gene can differ through naturally occurring variations (e.g. polymorphisms), each with its own valid existence. This clone is substantially in agreement with the reference, but a complete review of all prevailing variants is recommended prior to use. [More info](#)

OTI Annotation: This clone was engineered to express the complete ORF with an expression tag. Expression varies depending on the nature of the gene.

Components: The ORF clone is ion-exchange column purified and shipped in a 2D barcoded Matrix tube containing 10ug of transfection-ready, dried plasmid DNA (reconstitute with 100 ul of water).

- Reconstitution Method:**
1. Centrifuge at 5,000xg for 5min.
 2. Carefully open the tube and add 100ul of sterile water to dissolve the DNA.
 3. Close the tube and incubate for 10 minutes at room temperature.
 4. Briefly vortex the tube and then do a quick spin (less than 5000xg) to concentrate the liquid at the bottom.
 5. Store the suspended plasmid at -20°C. The DNA is stable for at least one year from date of shipping when stored at -20°C.

RefSeq: [NM_020659.4](#)

RefSeq Size: 2045 bp

RefSeq ORF: 1353 bp

Locus ID: 57348

UniProt ID: [Q9H313](#)

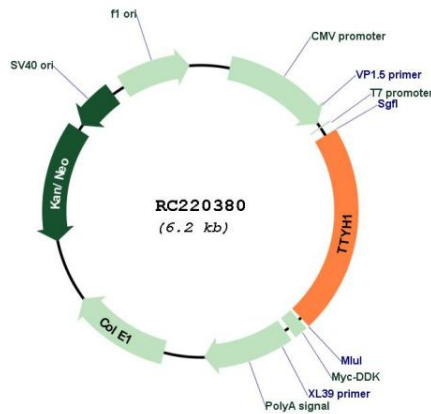
Cytogenetics: 19q13.42

Protein Families: Ion Channels: Other, Transmembrane

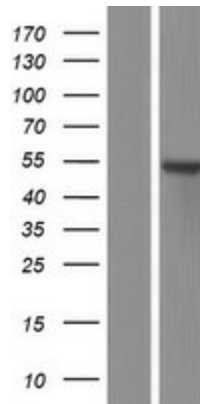
MW: 48.9 kDa

Gene Summary: This gene encodes a member of the tweety family of proteins. Members of this family function as chloride anion channels. The encoded protein functions as a calcium(2+)-independent, volume-sensitive large conductance chloride(-) channel. Three transcript variants encoding distinct isoforms have been identified for this gene. [provided by RefSeq, Jan 2011]

Product images:



Circular map for RC220380



Western blot validation of overexpression lysate (Cat# [LY412397]) using anti-DDK antibody (Cat# [TA50011-100]). Left: Cell lysates from untransfected HEK293T cells; Right: Cell lysates from HEK293T cells transfected with RC220380 using transfection reagent MegaTran 2.0 (Cat# [TT210002]).