

## Product datasheet for **RC220373**

### **NXPH2 (NM\_007226) Human Tagged ORF Clone**

#### Product data:

Product Type:	Expression Plasmids
Product Name:	NXPH2 (NM_007226) Human Tagged ORF Clone
Tag:	Myc-DDK
Symbol:	NXPH2
Synonyms:	NPH2
Mammalian Cell Selection:	Neomycin
Vector:	pCMV6-Entry (PS100001)
E. coli Selection:	Kanamycin (25 ug/mL)
ORF Nucleotide Sequence:	>RC220373 ORF sequence Red=Cloning site Blue=ORF Green=Tags(s)

TTTTGTAATACGACTCACTATAGGGCGGCCGGAATTCGTCGACTGGATCCGGTACCGAGGAGATCTGCC  
GCC**CGATCGCC**

ATGCGCCTGCGGCCGCTGCCCTCGTGGTGGTCCCTGGCTTGCTGCAGCTGCTATTTTGTGACAGTAAGG  
AAGTGGTGCATGCCACGGAGGGGCTGGATTGGGAAGACAAAGATGCTCCAGGGACGTTGGTCGGCAACGT  
GGTGCCTCAAGGATCATCAGTCCCTGCGCCTGTTTGTAAACAGTCTCCGGTGCCCAAGCCCGGCC  
ATGGCGTATGCAGACAGCATGAAAACTTTGGGATTGGCTGGCCAACATCACGGAGATTCAGGAGCCAT  
TGCAAGAATAAACGGAGGCCAATAGTAAAAACAGGAAATTTAAGAAAATGTTTGGATGGGGTGACTT  
TCATCCAACATTAACCTGTCAAACCTCAATCTCCTCATCACAGGAAAAATTGTTGACCATGGAAATGGA  
ACCTTCAGAGTGTATTTCCGACATAATCAACAGGCCTGGGCAATGTTTCAGTGAGCTTGGTACCACCT  
CCAAGGTGGTGAATTTGAAGTTTCCCCCAGTCTACCTTGAGACCAAGGAATCCAATCTTTCAATTG  
TCGATTGAGTATGAAAAACAGATCGGGCGAAAAAGACCGCCCTGTGCAACTTTGACCCATCCAAGATC  
TGCTACCAGGAGCAGACTCAGAGCCATGTGCTTGGTTGTGCTCCAAGCCCTCAAGGTCATTTGCATTT  
ACATTGCCTTTTACAGTGTGATTATAAACTCGTGCAAAAGGTGTGCCCTGACTACAATTACCATAGTGA  
GACCCATACTTATCTTCTGGC

**ACGCGT**ACGCGGCCGCTCGAGCAGAACTCATCTCAGAAGAGGATCTGGCAGCAAATGATATCCTGGATT  
ACAAGGATGACGACGATAAGGTTTAA



**Protein Sequence:** >RC220373 protein sequence  
Red=Cloning site Green=Tags(s)

MRLRPLPLVVVPGLLQLLFCDSKEVVHATEGLDWEDKDAPGTLVGNVVHSRIISPLRLFVKQSPVPKPGP  
 MAYADSMENFWDLANITEIQEPLARTKRRPIVKTGKFKKMFGWGDFHSNIKTVKLNLLITGKIVDHGNG  
 TFRVYFRHNSTGLGNVSVSLVPPSKVVEFEVSPQSTLETKESKSFNCRIEYEKDRAKKTALCNFDPSKI  
 CYQEQTQSHVSWLCSKPFKVICIYIAFYSDYKLVQKVC PDYNYHSETPYLSSG

TRTRPLEQKLISEEDLAANDILDYKDDDDKV

**Chromatograms:** [https://cdn.origene.com/chromatograms/mk6744\\_e06.zip](https://cdn.origene.com/chromatograms/mk6744_e06.zip)

**Restriction Sites:** SgfI-MluI

**Cloning Scheme:**

Cloning sites used for ORF Shuttling:



\* The last codon before the Stop codon of the ORF

**ACCN:** NM\_007226

**ORF Size:** 792 bp

**OTI Disclaimer:** The molecular sequence of this clone aligns with the gene accession number as a point of reference only. However, individual transcript sequences of the same gene can differ through naturally occurring variations (e.g. polymorphisms), each with its own valid existence. This clone is substantially in agreement with the reference, but a complete review of all prevailing variants is recommended prior to use. [More info](#)

**OTI Annotation:** This clone was engineered to express the complete ORF with an expression tag. Expression varies depending on the nature of the gene.

**Components:** The ORF clone is ion-exchange column purified and shipped in a 2D barcoded Matrix tube containing 10ug of transfection-ready, dried plasmid DNA (reconstitute with 100 ul of water).

**Reconstitution Method:**

1. Centrifuge at 5,000xg for 5min.
2. Carefully open the tube and add 100ul of sterile water to dissolve the DNA.
3. Close the tube and incubate for 10 minutes at room temperature.
4. Briefly vortex the tube and then do a quick spin (less than 5000xg) to concentrate the liquid at the bottom.
5. Store the suspended plasmid at -20°C. The DNA is stable for at least one year from date of shipping when stored at -20°C.

**RefSeq:** [NM\\_007226.3](#)

**RefSeq Size:** 2560 bp

**RefSeq ORF:** 795 bp

**Locus ID:** 11249

**UniProt ID:** [O95156](#)

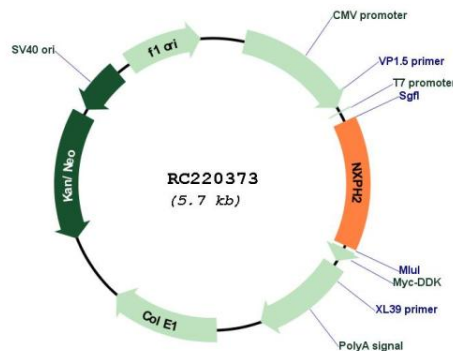
**Cytogenetics:** 2q22.1

**Protein Families:** Secreted Protein

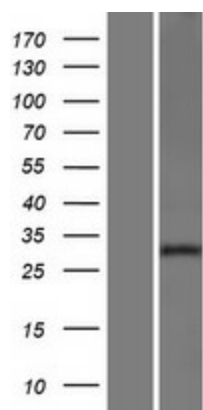
**MW:** 30 kDa

**Gene Summary:** May be signaling molecules that resemble neuropeptides and that act by binding to alpha-neurexins and possibly other receptors.[UniProtKB/Swiss-Prot Function]

**Product images:**



Circular map for RC220373



Western blot validation of overexpression lysate (Cat# [LY416113]) using anti-DDK antibody (Cat# [TA50011-100]). Left: Cell lysates from untransfected HEK293T cells; Right: Cell lysates from HEK293T cells transfected with RC220373 using transfection reagent MegaTran 2.0 (Cat# [TT210002]).