

Product datasheet for **RC220372**

Dystrobrevin beta (DTNB) (NM_033147) Human Tagged ORF Clone

Product data:

Product Type:	Expression Plasmids
Product Name:	Dystrobrevin beta (DTNB) (NM_033147) Human Tagged ORF Clone
Tag:	Myc-DDK
Symbol:	Dystrobrevin beta
Mammalian Cell Selection:	Neomycin
Vector:	pCMV6-Entry (PS100001)
E. coli Selection:	Kanamycin (25 ug/mL)



[View online »](#)

ORF Nucleotide Sequence:

>RC220372 representing NM_033147
 Red=Cloning site Blue=ORF Green=Tags(s)

TTTTGTAATACGACTCACTATAGGGCGGCCGGAATTCGTCGACTGGATCCGGTACCGAGGAGATCTGCC
 GCC**GCGATCGCC**

ATGATTGAGGAAAGTGGGAACAAGCGGAAGACCATGGCAGAGAAGAGGCAGCTGTTCATAGAAAATGCGTG
 CTCAGAATTTTGTATGTCATACGACTATCAACTTACAGAACAGCCTGCAAATTACGATTTGTACAAAAACG
 ATGCAACCTTCATCTTGTGATATCTGGAACATGATTGAAGCCTCCGAGACAATGGCCTTAATACACTG
 GACCATACCACCGAGATCAGTGTGTCCCGCCTCGAAAAGTGCATCTCCTCCATCTACTATCAGTTGAACA
 AGCGCCTTCTTCTACTACCAAATTAGTGTGGAACAATCTATCAGCCTCCTCCTCAACTTTATGATTGC
 TGCATATGACAGTGAGGGCCGAGGCAAGTTGACGGTATTTTCAGTTAAAGCTATGTTAGCAACCATGTGT
 GGTGGAAAAATGCTGGACAAATTGAGATATGTTTTCTCCAGATGTCAGATTCCAATGGCTTAATGATAT
 TTAGCAAGTTGACCAGTTTCTGAAGGAAGTTCTGAAGCTCCCAACAGCTGTCTTTGAAGGGCCATCTTT
 TGTTTACACAGAGCACTCAGTCCGCACCTGTTTTCCACAGCAGAGAAAAGATAATGCTAAAATGTTTTTA
 GACACAATGATGGCTGACCTCCTCCCAAGTGCCTTGTCTGGCTACCTCTCATGCACAGGCTTGCCCATG
 TTGAGAATGTCTTCCATCCCGTGGAGTGCTCCTACTGCCGATGTGAGAGTATGATGGGTTTCCGGTACCG
 ATGCCAGCAGTGCCACAATATCAGCTCTGCCAGAATTGCTTTTGGCGTGGCCATGCCGGCGGCCCTCAC
 AGCAACCAGCACCAGATGAAGGAGCATTCTCTTGGAAATCTCCTGCAAAGAAGCTGAGCCATGCAATTA
 GTAATCTTTGGGGTGTGTACCCACGAGAGAACCCCGCATCTGTTTTTCTGAGCAACCAGAGAAAACC
 ACTTGACCTTGCACATATAGTTCTCCTCGCCCTGACTAATATGAATGACACCATGGTTAGCCACATG
 TCCTCTGGAGTGCCCACTCCCAACAGAGGTTACAGTATAGCCAGGATATACCCAGTCACTGGCCGATG
 AGCATGCGTGATAGCCTCCTATGTGGCCGCTGTCAGCACTGTGCAGCTGTTCTGGACAGTCTTAGCCG
 ACTGGATGAGGAACACCGCTTATAGTCGCTATGCTGCCGGCTGGCTGCAAGAAGCAGGAAACGTGACT
 CGTCTCCCACTGACTTGAGCTTTAACTTTGATGCCAACAAACAACAAAGACAGCTTATTGCAGAACTGG
 AAAACAAAAACAGAGAGATCCTGCAGGAGATTCAGCGTCTCCGCCTGGAACACGAGCAGGCTCCAGCC
 CACCCCTGAGAAGGCACAGCAGAACCCACGCTGCTGGCAGAGCTGCGGCTGCTGAGGCAAAGGAAGGAT
 GAACTGGAGCAGAGGATGTCGGCCCTGCAGGAGCAGGCGGGAGCTGATGGTCCAGCTGGAAGAGCTGA
 TGAAGTTGCTGAAGGAGGAAGAGCAAAGCAGGCAGCTCAGGCCACAGGGTCACCACATACATCGCCAC
 CCATGGAGGCGGCCGCAATGCCATGCCAGTGCCTCCACGTCTGCCGGCTCCACCCCACTGCTGT
 CCGCAGGACTCGCTGAGCGGAGTCGGGGAGAGCTGCAGGAGGCCTTCGACAAGCAGAGGAAGGTGCAG
 AGGAAGAAGAAGAGAAGATGCAGAATGGAAAGACAGAGGT

ACGCGTACGCGGCCGCTCGAGCAGAAACTCATCTCAGAAGAGGATCTGGCAGCAAATGATATCCTGGATT
 ACAAGGATGACGACGATAAGGTTTAA

Protein Sequence:

>RC220372 representing NM_033147
 Red=Cloning site Green=Tags(s)

MIEESGNKRKTMAEKRQLFIEMRAQNFVIRLSTYRTACKLRFVQKRCNLHLVDIWNMIEAFRDNGLNLT
 DHTTEISVSRLETVISSIYYQLNKRLPSTHQISVEQSI SLLLNFMI AAYDSEGRKLT VFSVKAMLATMC
 GGKMLDKLRYVFSQMSDSNGLMIFSKFDQFLKEVLKLP TAVFEGPSF GYTEHSVRTCFPQQRKIMLNMFL
 DTMMADPPPQCLVWLPLMHLRAHVENVHPVECSYCRCE SMMGFYRQCQCHNYQLCQNCFWRGHAGGPH
 SNQHQMKEHSSWKSPAKKLSHAISKSLGCVPTREPPHPVFPEQPEKPLDLAHIVPPRPLTNMNDTMVSHM
 SSGVPTPTKRLQYSQDIPSHLADEHALIASYVARLQHCARVLDSPSRLDEEHLIARYAARLAAEAGNVT
 RPPTDL SFNFDANKQQRQLIAELENKNREILQEIQRLRLEHEQASQPTPEKAQQNPTLLAELRLLRQRKD
 ELEQRMSALQESRRELMVQLEELMKLLKEEQKQAAQATGSPHTSPTHGGGRMPMPVVRSTAGSTPTH
 PQDSL SGVGGDVQEAF AQAE EGAEEEEKMQNGKDRG

TRTRPLEQKLISEEDLAANDILDYKDDDDKV

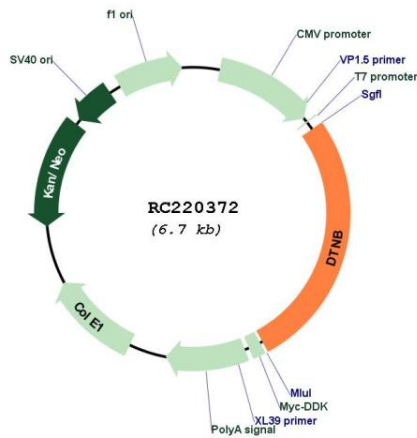
Chromatograms:

https://cdn.origene.com/chromatograms/mk8069_a03.zip

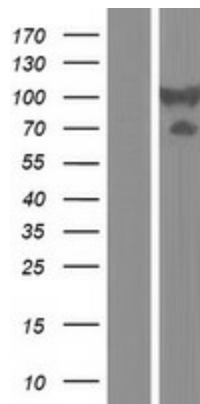
UniProt ID: [O60941](#)
Cytogenetics: 2p23.3
Domains: ZnF_ZZ
MW: 67.9 kDa

Gene Summary: This gene encodes dystrobrevin beta, a component of the dystrophin-associated protein complex (DPC). The DPC consists of dystrophin and several integral and peripheral membrane proteins, including dystroglycans, sarcoglycans, syntrophins and dystrobrevin alpha and beta. The DPC localizes to the sarcolemma and its disruption is associated with various forms of muscular dystrophy. Dystrobrevin beta is thought to interact with syntrophin and the DP71 short form of dystrophin. [provided by RefSeq, Mar 2016]

Product images:



Circular map for RC220372



Western blot validation of overexpression lysate (Cat# [LY409709]) using anti-DDK antibody (Cat# [TA50011-100]). Left: Cell lysates from untransfected HEK293T cells; Right: Cell lysates from HEK293T cells transfected with RC220372 using transfection reagent MegaTran 2.0 (Cat# [TT210002]).