

Product datasheet for **RC220358**

Z DNA binding protein (ZBP1) (NM_030776) Human Tagged ORF Clone

Product data:

Product Type:	Expression Plasmids
Product Name:	Z DNA binding protein (ZBP1) (NM_030776) Human Tagged ORF Clone
Tag:	Myc-DDK
Symbol:	Z DNA binding protein
Synonyms:	C20orf183; DAI; DLM-1; DLM1
Mammalian Cell Selection:	Neomycin
Vector:	pCMV6-Entry (PS100001)
E. coli Selection:	Kanamycin (25 ug/mL)



[View online »](#)

ORF Nucleotide Sequence:

>RC220358 representing NM_030776
 Red=Cloning site Blue=ORF Green=Tags(s)

TTTTGTAATACGACTCACTATAGGGCGGCCGGAATTCGTCGACTGGATCCGGTACCGAGGAGATCTGCC
 GCCGCGATCGCC

ATGGCCCAGGCTCCTGCTGACCCGGCAGAGAAGCCACCTTGAACAAAGAAATCCTGCAGGTGCTGACAG
 AGGCTGGCTCCCGGTGAAACTTGCCAGCTGGTGAAGGAATGCCAAGCACCCAAGAGGGAGCTCAACCA
 AGTCTCTACCGAATGAAAAAGGAGTTGAAAGTCTCCCTCACATCCCCTGCCACCTGGTGCCTGGGCGGG
 ACTGATCTGAAGGCGAGGGTCTGCAGAGCTGGCCTTGTCCAGCCCTGCCAAGAGGCCCCAGCAACATG
 CAGCTACAATTCAGAGACCCCTGGCCCTCAGTTCAGCCAACAACGGGAGGAAGACATCTACAGGTTTCT
 CAAAGACAATGGTCCCCAGAGGGCCCTGGTCATCGCCCAAGCACTGGGAATGAGGACAGCAAAAGATGTG
 AACCGAGACTTGTACAGGATGAAGAGCAGGCACCTTCTGGACATGGATGAGCAGTCAAAGCATGGACGA
 TTTACCGCCAGAAGATTCTGGAAGAAGAGCAAAGTCAGCCTCAATTATTTACCAGCACAATCCAATCAA
 CATGATCTGCCAGAATGGACCCAACAGCTGGATTTCCATTGCAAACCTCCGAAGCCATCCAGATTGGACAC
 GGAACATCATTACAAGACAGACAGTCTCCAGGGAGGACGGTTCGCGCGTCCACGCCACCTCCCTTCAA
 TGGCACCAGGTGATTCTCAACTTGGGGGACCCTAGTTGATCCCTGGGGGCCCCAGGACATCCACATGGA
 GCGGTCCATACTGAGACGGGTGCAGCTGGGACACAGCAATGAGATGAGGCTCCACGGCGTCCCGTCCGAG
 GGCCCTGCCACATCCCCCTGGCAGCCCCCAGTCTCTGCCACTGCTGCCGGCCAGAAGCTTCGTTTTG
 AAGCAAGAATTCAGTCCAGGAACTCACCTGAGGGGGAAGCCGCCAGAGAATCCACATGAAATCGTG
 CTTTCTCGAGGACGCCACCATCGCAACAGCAAAAAATGCTATCAGCCAGGGGTGGCTGGCCAGGA
 GGAGTCGACGGGTCTGGAGAGGGGAGCCAGGGGAGGACGCAGGTCGTCGTCGTCGCGCAGACACACAATCCA
 GAAGTCACCTTCTCGAGACATTGGTCAGCCCATCACTCCAGCCACTCGAAGCTCACCCCAAGCTGGA
 AACTATGACTCTTGGAAACAGGAGTCACAAAGCTGCAGAAGGCAGCCACTATGTGGATGAAGCCTCACAC
 GAGGGGAGCTGGTGGGAGGTGGGATT

ACGCGTACGCGGCCGCTCGAGCAGAAACTCATCTCAGAAGAGGATCTGGCAGCAATGATATCCTGGATT
 ACAAGGATGACGACGATAAGGTTTAA

Protein Sequence:

>RC220358 representing NM_030776
 Red=Cloning site Green=Tags(s)

MAQAPADPGREGHLEQRILQVL TEAGSPVKLAQLVKECQAPKRELNQVL YRMKELKVSL TSPATWCLGG
 TDPEGEPALALSSPAKRPQQAATIPETPGPQFSQQREEDIYRFLKDNGPQRALVIAQALGMRTAKDV
 NRDL YRMKSRHLLDMDEQSKAWTIYRPEDSGRRAKSASIIYQHNPI NMICQNGPNSWISIANSEAIQIGH
 GNIITRQTVSREDGSAGPRHLPSMAPGDSSTWGLVDPWGPQDIHMERSILRRVQLGHSNEMRLHGVPSE
 GPAHIPPSPVSATAAGPEASFEARIPSPGTHPEGEAAQRIHMKSCFLEDATIGNSNKMSISPGVAGPG
 GVAGSGEGEPGEDAGRRPADTQSRSHFPRDIGQPI TPSHKLTPKLETMTLGNRSHKAAEGSHYVDEASH
 EGSWWGGGI

TRTRPLEQKLISEEDLAANDILDYKDDDDKV

Chromatograms:

https://cdn.origene.com/chromatograms/mk6167_e09.zip

Restriction Sites:

Sgfl-Mlul

Cloning Scheme:


ACCN: NM_030776

ORF Size: 1287 bp

OTI Disclaimer: The molecular sequence of this clone aligns with the gene accession number as a point of reference only. However, individual transcript sequences of the same gene can differ through naturally occurring variations (e.g. polymorphisms), each with its own valid existence. This clone is substantially in agreement with the reference, but a complete review of all prevailing variants is recommended prior to use. [More info](#)

OTI Annotation: This clone was engineered to express the complete ORF with an expression tag. Expression varies depending on the nature of the gene.

Components: The ORF clone is ion-exchange column purified and shipped in a 2D barcoded Matrix tube containing 10ug of transfection-ready, dried plasmid DNA (reconstitute with 100 ul of water).

Reconstitution Method:

1. Centrifuge at 5,000xg for 5min.
2. Carefully open the tube and add 100ul of sterile water to dissolve the DNA.
3. Close the tube and incubate for 10 minutes at room temperature.
4. Briefly vortex the tube and then do a quick spin (less than 5000xg) to concentrate the liquid at the bottom.
5. Store the suspended plasmid at -20°C. The DNA is stable for at least one year from date of shipping when stored at -20°C.

RefSeq: [NM_030776.3](#)

RefSeq Size: 2224 bp

RefSeq ORF: 1290 bp

Locus ID: 81030

UniProt ID: [Q9H171](#)

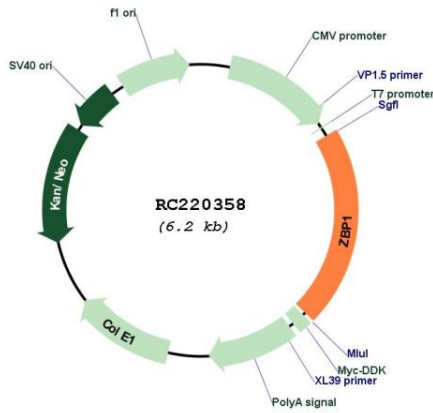
Cytogenetics: 20q13.31

Protein Pathways: Cytosolic DNA-sensing pathway

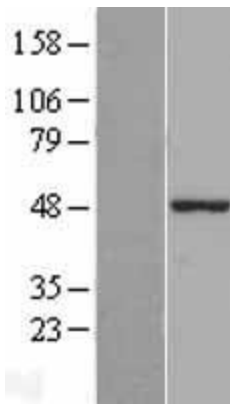
MW: 46.2 kDa

Gene Summary: This gene encodes a Z-DNA binding protein. The encoded protein plays a role in the innate immune response by binding to foreign DNA and inducing type-I interferon production. Alternatively spliced transcript variants encoding multiple isoforms have been observed for this gene. [provided by RefSeq, Dec 2011]

Product images:



Circular map for RC220358



Western blot validation of overexpression lysate (Cat# [LY403079]) using anti-DDK antibody (Cat# [TA50011-100]). Left: Cell lysates from untransfected HEK293T cells; Right: Cell lysates from HEK293T cells transfected with RC220358 using transfection reagent MegaTran 2.0 (Cat# [TT210002]).