

Product datasheet for **RC220356**

C12orf48 (PARPBP) (NM_017915) Human Tagged ORF Clone

Product data:

Product Type:	Expression Plasmids
Product Name:	C12orf48 (PARPBP) (NM_017915) Human Tagged ORF Clone
Tag:	Myc-DDK
Symbol:	C12orf48
Synonyms:	AROM; C12orf48; PARI
Mammalian Cell Selection:	Neomycin
Vector:	pCMV6-Entry (PS100001)
E. coli Selection:	Kanamycin (25 ug/mL)



[View online »](#)

ORF Nucleotide Sequence:

>RC220356 representing NM_017915
 Red=Cloning site Blue=ORF Green=Tags(s)

TTTTGTAATACGACTCACTATAGGGCGGCCGGAATTCGTCGACTGGATCCGGTACCGAGGAGATCTGCC
 GCC**CGGATCGCC**

ATGGCTGTGTTTAAATCAGAAGTCTGTCTCGGATATGATTAAGAGTTTCGAAAAATTGGCGTGCTCTTT
 GTAACCTCTGAGAGAACTACTCTATGTGGTGCAGACTCCATGCTCTTGGCATTGCAGCTTTCTATGGCGGA
 GAACAACAACAGCAGTGGAGAATTTACAGTCTCTCTCAGTGATGTTTTATTGACATGGAAATACTTG
 CTCATGAGAAATTGAACCTACCAGTTGAAAACATGGACGTGACTGACCATTATGAGGACGTTAGGAAGA
 TTTATGATGATTTCTGAAGAACAGTAATATGTTAGATCTGATTGATGTTTATCAAAAATGATAGGCTTT
 GACTTCTAATTGTGAAAATTATAACACAGTATCTCCTAGTCAACTACTGGATTTTCTGTCTGGCAACAG
 TATGCAGTAGGTGATGAACTGATCTTTCTATACCAACATCACCACAAGTAAATACAACCGTGATAATG
 AAAAGGTGCAGCTGCTAGCAAGGAAAATATCTTTTCATATTTAAATCTGCTAGTGAATTCAAAAGATGA
 CCTGGCTGTGGCTTATATTCTCAATATTCCTGATAGAGGACTAGGAAGAGAAGCCTTCAGTATTTGAAA
 CATGCTGCTCGAGAGAAACAAATGTCTATCTTTTTGGTGGCCACGCTTTTTATTAGAACAATAGAGCTTG
 GAGGAAAAGGATATGCACCACCACCATCAGATCCTTTAAGGACACATGTAAGGGATTGTCTAATTTTAT
 TAATTTCAATTGACAAATTAGATGAGATTCTGGAGAAATACCAAACCAAGCATTGCAGGGGGTCAAATA
 CTGTCACTGATAAAGATGCAACTGATTAAGGCCAAAACAGCAGGGATCCTTTTTGCAAAGCAATAGAGG
 AAGTTGCTCAGGATTTGGATTTGAGGATTAATAATTATCAATTCTCAAGAAGGTGTTGTAGCTCTTAG
 CACCACTGACATCAGTCTGCTCGGCCAAAATCTCATGCCATAAACCATGGTACTGCATACTGTGGCAGA
 GATACTGTGAAAGCCTTATTAGTTCTTTGGACGAAGAAGCAGCTAATGCTCCTACCAAAAACAAAGCAG
 AGCTTTTTATGATGAGGAAAACAATCCATCATGGAACGCTTATTTCTTACACTTTTAGTCTCC
 CACACAGGTGAATAATTCGATAAAACCCCTAAGAGAACGCACTGTGTGCAATGCAAGAGAAAAAATT
 AAGATGAAGCAAACTTTAATTAGATCCCAATTTGCTTGTACTTATAAAGATGACTACATGATAAGCAAGG
 ATAATTTGAAATAATGTTAATTTAGCATCAAAGCCTTTGTGTGTTCTTACATGGAAAATGACCTTTCTGA
 GGGTGTAATCCATCTGTTGGAAGATCAACAATTGGAACGAGTTTTGAAATGTTTCATCTGGACAGAAGT
 AAAAATGAAAAGTATCAAGAAAATCAACCAGTCAGACAGGAAAATAAAAGCTCAAAAAGGAAACAGGTGG
 ATTTGGATGGTAAAATATTCTCTGTGATAATAGAAATGAACCACCTCAACATAAAAATGCTAAAATACC
 TAAGAAAATCAAATGATTCACAGAATAGATTGTACGGCAAACCTAGCTAAAGTAGCAAAAAGTAATAAATGT
 ACTGCAAGGACAAGTTGATTTCTGGCCAGGCAAAGTAACTCAGTTTTTTAGACTA

ACGCGTACGCGGCCGCTCGAGCAGAAACTCATCTCAGAAGAGGATCTGGCAGCAAATGATATCCTGGATT
 ACAAGGATGACGACGATAAGGTTTAA

Protein Sequence:

>RC220356 representing NM_017915
 Red=Cloning site Green=Tags(s)

MAVFNQKSVSDMIKEFRKNWRALCNSERTTLCGADSMMLLALQLSMAENNKQHSGEFTVSLSDVLLTWKYL
 LHEKLNLPVENMDVTDHYEDVRKIYDDFLKNSNMLDLIDVYQKCRALTSNCENYNTVSPSQLLDFLSGKQ
 YAVGDETDLSIPTSPKSYNRDNEKVQLLARKIIFSYLNLLVNSKNDLAVAYILNIPDRGLGREAFDLK
 HAAREKQMSIFLVATSFIRTIELGGKGYAPPPSDPLRTHVKGLSNFINFIDKLDEILGEIPNPSIAGGQI
 LSVIKMQLIKGQNSRDPFCKAIEEVAQDLDLRIKNIINSQEGVVALSTTDISPAPKSHAINHGTAAYCGR
 DTVKALLVLLDEEAANAPTKNKAELLYDEENTIHHHGTSILTLFRSPTQVNNSIKPLRERICVSMQEKKI
 KMKQTLIRSQFACTYKDDYMI SKDNWNNVNLASKPLCVLYMENDLSEGVNPSVGRSTIGTSFGNVHLDRS
 KNEKVS RKSTSQTGNKSKRKQVDLDGENILCDNRNEPPQHNAKIPKKSNDSSQNRLYGKLA KVAKSNKC
 TAKDKLISGQAKLTQFFRL

TRTRPLEQKLISEEDLAANDILDYKDDDDKV

Chromatograms:

https://cdn.origene.com/chromatograms/mk8020_b05.zip

Restriction Sites:

Sgfl-Mlul

Cloning Scheme:


ACCN: NM_017915

ORF Size: 1737 bp

OTI Disclaimer: The molecular sequence of this clone aligns with the gene accession number as a point of reference only. However, individual transcript sequences of the same gene can differ through naturally occurring variations (e.g. polymorphisms), each with its own valid existence. This clone is substantially in agreement with the reference, but a complete review of all prevailing variants is recommended prior to use. [More info](#)

OTI Annotation: This clone was engineered to express the complete ORF with an expression tag. Expression varies depending on the nature of the gene.

Components: The ORF clone is ion-exchange column purified and shipped in a 2D barcoded Matrix tube containing 10ug of transfection-ready, dried plasmid DNA (reconstitute with 100 ul of water).

Reconstitution Method:

1. Centrifuge at 5,000xg for 5min.
2. Carefully open the tube and add 100ul of sterile water to dissolve the DNA.
3. Close the tube and incubate for 10 minutes at room temperature.
4. Briefly vortex the tube and then do a quick spin (less than 5000xg) to concentrate the liquid at the bottom.
5. Store the suspended plasmid at -20°C. The DNA is stable for at least one year from date of shipping when stored at -20°C.

RefSeq: [NM_017915.5](#)

RefSeq Size: 2175 bp

RefSeq ORF: 1740 bp

Locus ID: 55010

UniProt ID: [Q9NWS1](#)

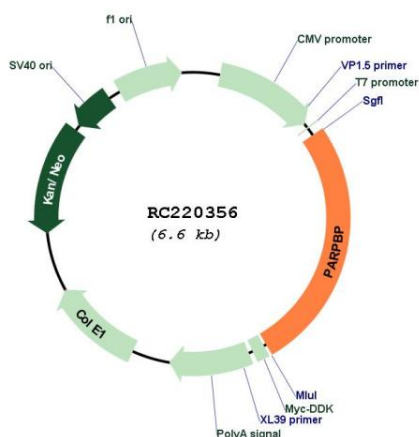
Cytogenetics: 12q23.2

Protein Families: Druggable Genome

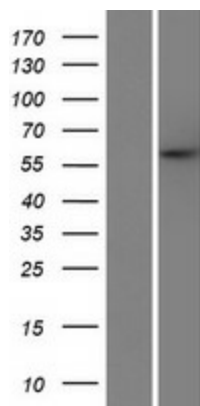
MW: 65.05 kDa

Gene Summary: Required to suppress inappropriate homologous recombination, thereby playing a central role DNA repair and in the maintenance of genomic stability. Antagonizes homologous recombination by interfering with the formation of the RAD51-DNA homologous recombination structure. Binds single-strand DNA and poly(A) homopolymers. Positively regulate the poly(ADP-ribosyl)ation activity of PARP1; however such function may be indirect. [UniProtKB/Swiss-Prot Function]

Product images:



Circular map for RC220356



Western blot validation of overexpression lysate (Cat# [LY413444]) using anti-DDK antibody (Cat# [TA50011-100]). Left: Cell lysates from untransfected HEK293T cells; Right: Cell lysates from HEK293T cells transfected with RC220356 using transfection reagent MegaTran 2.0 (Cat# [TT210002]).