

Product datasheet for **RC220354**

PSD3 (NM_206909) Human Tagged ORF Clone

Product data:

Product Type:	Expression Plasmids
Product Name:	PSD3 (NM_206909) Human Tagged ORF Clone
Tag:	Myc-DDK
Symbol:	PSD3
Synonyms:	EFA6D; EFA6R; HCA67
Mammalian Cell Selection:	Neomycin
Vector:	pCMV6-Entry (PS100001)
E. coli Selection:	Kanamycin (25 ug/mL)



[View online »](#)

ORF Nucleotide Sequence:

>RC220354 representing NM_206909
 Red=Cloning site Blue=ORF Green=Tags(s)

TTTTGTAATACGACTCACTATAGGGCGGCCGGAATTCGTCGACTGGATCCGGTACCGAGGAGATCTGCC
 GCC**CGCATCGCC**

ATGGGCTCTTCTTGGTGTCTGTATGGTTGCTGCAATGCTGGGGTAAAAACAACACGGCTAGAAGCTCATT
 CTGAAATGGGGAGCACTGAAATTTTGGAAAAGGAGACCCAGAAAATCTCAGTAATGGTACCAGCAGCAA
 TGTGGAAGCAGCCAAAAGGTTGGCCAAACGCCTTTATCAGCTGGACAGATTCAAAAGATCAGATGTTGCA
 AAACACCTTGGCAAGAACAACGAATTTAGCAAAGTTCGAGAAGAATATCTGAAGTTTTTTGATTTTA
 CAGGAATGACGCTGGATCAGTCACTCAGGTATTTCTTTAAAGCATTCTCTCTTGTGGGAGAACTCAAGA
 ACGAGAGAGATTTTAATACACTTCTCCAATAGATATTTTTATTGTAACCCAGATACCATTGCTTCACAA
 GATGGAGTCCATTGCCTTACCTGTGCAATAATGCTTCTTAATACCGATCTACATGGCCACAATATTGGAA
 AGAAGATGACCTGTCAGGAGTTCATTGCAAATCTGCAAGGGTAAATGAGGGTGTGATTCTCCAAGGA
 TCTGCTGAAAGCTCTGTACAACCAATCAAGAATGAGAAGCTTGAATGGGCAGTAGATGATGAAGAGAAA
 AAAAAAGTCTCCCTCAGAAAGTACTGAGGAGAAAGCTAACGGAACACATCCAAAGACCATCAGTCGTATTG
 GAAGTACTACTAACCATTTTTGGACATTCCTCATGATCCAAATGCTGCTGTGTACAAAAGTGGATTCTT
 GGCTCGGAAAATTCATGCAGATATGGATGGAAAGAAGACTCCAAGAGGAAAACGAGGATGGAAAACCTTT
 TATGCTGTACTGAAGGGAACAGTTCTTTACTTGCAAAAGGATGAATACAAGCCAGAAAAGGCCTTGTCTG
 AAGAGGACTTGAAAAACGCTGTGAGTGTGCACCACGCATTGGCATCCAAGGCCACGGACTATGAGAAGAA
 ACCAAACGTGTTTAACTTAAACTGCCGACTGGAGGGTCTTGCTTTTCAAACCTCAGAGCCAGAGGAA
 ATGCAAGGTGGATAAACAATAAATCAATTGTGTGCAGCTGTATTTCTGCACCACCATTCCAGCAGCAA
 TCGGCTCTCAGAAGAAGTTTAGCCGCCACTTCTGCCTGCCACTACAACAAAAGTCTCAGGAGGAGCA
 ACTGAAGTCACATGAAAAGTAAAGCTGAAGCAGATCACACCGAGCTGGCCGAGCACCCTCATATCCCCC
 GACAAGAAGTCAAGCCAAGGACGTCGATGAGTACAACTGAAAGACCACTATCTGGAGTTTGAGAAAA
 CCCGCTATGAAATGTATGTCAGCATTCTCAAGGAAGGAGGCAAAGAGCTACTGAGTAACGATGAAAGCGA
 GGCTGCAGGACTGAAGAAGTCGCACTCGAGTCTTTCGCTGAACCCGGATACTTCTCCAATCACTGCCAAA
 GTCAAGCGTAACGTGTCAGAGAGGAAGGATCACCGACCTGAAACACCAAGCATTAAAGCAAAAAGTTACT

ACGCGTACGCGGCCGCTCGAGCAGAAACTCATCTCAGAAGAGGATCTGGCAGCAAATGATATCTGGATT
 ACAAGGATGACGACGATAAGGTTTAA

Protein Sequence:

>RC220354 representing NM_206909
 Red=Cloning site Green=Tags(s)

MGSSWCLYGCCNAGVKTTRLEAHSEMSTEILEKETPENLSNGTSSNVEAAKRLAKRLYLQDRFKRSDVA
 KHLGKNNEFSKLVAAEYLKFFDFTGMLDQSLRYFFKAFSLVGETQERERVL I HFSNRYFYCNPDTIASQ
 DGVHCLTCAIMLLNTDLHGHNIGKMTQCQEFIANLQGVNEGVDFSKDLLKALYNSIKNEKLEWAVDDEEK
 KKSPSESTEKANGTHPKTISRIGSTTNPFLDIPHPNAAVYKSGFLARKIHADMDGKKTTPRGKRWKTF
 YAVLKGTVLYLQKDEYKPEKALSEEDLKNVSVHHALASKATDYEKPNVFKLKTADWRVLLFQTQSPEE
 MQGWINKINCVAAVFSAPPPAAIGSQKFSRPLL PATTTKLSQEEQLKSHEKSLKQITTELAEHRSYPP
 DKKVKAKDVDEYKLDHYLEFEKTRYEMYVSILKEGGKELLSNDESEAGLKKSHSSPSLNPDTSPITAK
 VKRNVSERKDRHPETPSIKQKVT

TRTRPLEQKLISEEDLAANDILDYKDDDDKV

Chromatograms:

https://cdn.origene.com/chromatograms/ja1403_e02.zip

Restriction Sites:

Sgfl-Mlul

Cloning Scheme:


ACCN: NM_206909

ORF Size: 1539 bp

OTI Disclaimer: The molecular sequence of this clone aligns with the gene accession number as a point of reference only. However, individual transcript sequences of the same gene can differ through naturally occurring variations (e.g. polymorphisms), each with its own valid existence. This clone is substantially in agreement with the reference, but a complete review of all prevailing variants is recommended prior to use. [More info](#)

OTI Annotation: This clone was engineered to express the complete ORF with an expression tag. Expression varies depending on the nature of the gene.

Components: The ORF clone is ion-exchange column purified and shipped in a 2D barcoded Matrix tube containing 10ug of transfection-ready, dried plasmid DNA (reconstitute with 100 ul of water).

- Reconstitution Method:**
1. Centrifuge at 5,000xg for 5min.
 2. Carefully open the tube and add 100ul of sterile water to dissolve the DNA.
 3. Close the tube and incubate for 10 minutes at room temperature.
 4. Briefly vortex the tube and then do a quick spin (less than 5000xg) to concentrate the liquid at the bottom.
 5. Store the suspended plasmid at -20°C. The DNA is stable for at least one year from date of shipping when stored at -20°C.

RefSeq: [NM_206909.2](#), [NP_996792.1](#)

RefSeq Size: 6822 bp

RefSeq ORF: 1542 bp

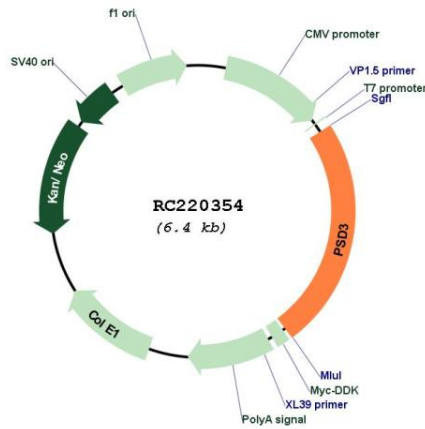
Locus ID: 23362

UniProt ID: [Q9NYI0](#)

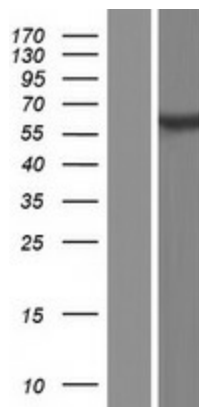
Cytogenetics: 8p22

Protein Pathways: Endocytosis
 MW: 57.9 kDa
 Gene Summary: Guanine nucleotide exchange factor for ARF6.[UniProtKB/Swiss-Prot Function]

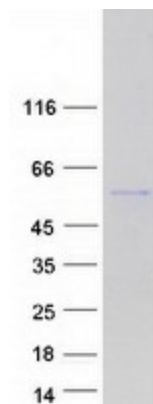
Product images:



Circular map for RC220354



Western blot validation of overexpression lysate (Cat# [LY404163]) using anti-DDK antibody (Cat# [TA50011-100]). Left: Cell lysates from untransfected HEK293T cells; Right: Cell lysates from HEK293T cells transfected with RC220354 using transfection reagent MegaTran 2.0 (Cat# [TT210002]).



Coomassie blue staining of purified PSD3 protein (Cat# [TP320354]). The protein was produced from HEK293T cells transfected with PSD3 cDNA clone (Cat# RC220354) using MegaTran 2.0 (Cat# [TT210002]).