

Product datasheet for **RC220347**

Angiomotin (AMOT) (NM_133265) Human Tagged ORF Clone

Product data:

| | |
|---------------------------|--|
| Product Type: | Expression Plasmids |
| Product Name: | Angiomotin (AMOT) (NM_133265) Human Tagged ORF Clone |
| Tag: | Myc-DDK |
| Symbol: | Angiomotin |
| Mammalian Cell Selection: | Neomycin |
| Vector: | pCMV6-Entry (PS100001) |
| E. coli Selection: | Kanamycin (25 ug/mL) |



[View online »](#)

ORF Nucleotide Sequence:

>RC220347 ORF sequence
 Red=Cloning site Blue=ORF Green=Tags(s)

TTTTGTAATACGACTCACTATAGGGCGGCCGGAATTCGTCGACTGGATCCGGTACCGAGGAGATCTGCC
 GCC**GCGATCGCC**

ATGCCTCGGGCTCAGCCATCCTCTGCTTCTTATCAGCCAGTGCCAGCAGACCCTTTTGGCATTGTTTCCA
 GAGCCCAGCAGATGGTTGAGATCCTCTCAGACGAGAACCAGAACTTGAGGCAAGAGTTGGAAGGATGCTA
 TGAGAAGGTGGCAAGACTGCAGAAGGTGGAGACAGAAATCCAGCGCGTCTCGGAGGCATATGAGAACCTC
 GTGAAGTCATCCTCCAAAAGAGAGGCCCTAGAGAAAGCCATGAGAAAACAAGCTAGAGGGCGAGATTCGGA
 GGATGCATGATTTCAACAGGGATCTGAGAGAGCGTCTAGAGACTGCCAACAGCAGCTTGACAGAGAAGGA
 ATATGAGGGGTGAGAGGACACCAGAAAACCATCTCGCAGCTCTTTGCAAAAAATAAAGAAAAGCCAGCGT
 GAGAAGGAGAAGCTGGAAGCGGAGCTGGCCACTGCCCGTTCTACCAATGAGGACCAAGACGACACATCG
 AAATCCGAGATCAGGCCCTGAGTAATGCCAGGCCAAGGTGGTAAAGCTGGAAGAAGAGCTGAAAAAGAA
 GCAAGTGTACGTTGACAAGGTGGAGAAGATGCAGCAGGCCCTTGTACAGCTCCAGGCAGCATGTGAAAAA
 CGTGAGCAGCTAGAGCACCGTCTCCGGACACGACTGGAGAGGAACTGGAATCCCTGAGAATCCAGCAGC
 GTCAGGGCAACTGTCAGCCCACCAACGTTTCAGAATACAATGCTGCTGCACTGATGGAGCTCCTTCGGGA
 GAAAGAGGAGAGGATTCTGGCTCTGGAAGCTGATATGACAAAAGTGGGAGCAGAAATTTGGAGGAGAAT
 GTGATGAGACATTTTGTCTGGATGCTGCTGCAACTGTGGCTGCTCAGAGGGACACAACAGTCATCAGTC
 ACTCTCCTAACACCAGCTATGACACAGCTCTAGAAGCTCGCATCCAGAAAAGAGGAGGAAGAAATCTTGAT
 GGCCAATAAGCGTTGCCCTGACATGGAGGGCAGGATTAAGACCCTCCATGCCAGATTATTGAGAAGGAT
 GCCATGATCAAAGTACTCCAGCAGCGTTCCCGAAGGAGCCGAGCAAGACAGAGCAGCTGTCGTGCATGC
 GGCCAGCGAAGTCTCTGATGTCCATTTCCAATGCTGGATCAGGCTTGTCTCCACTCATCCACCCTGAC
 TGGCTCCCCCATGGAAGAAAAGCGAGACGACAAGAGCTGGAAGGGGAGCCTAGGCATTCTCCTGGGT
 GGAGACTACCGTCTGAATATGTCCCTCCACACCCTCGCCTGTGCCACCCTCGACTCCCCTGCTCTCGG
 CTCACTCCAAGACAGGCAGCCGAGACTGCAGTACCCAACTGAACGTGGGACGGAATCGAACAAAAGTGC
 AGCTGTTGCTCCCATCTCTGTTCTGCTCCAGTTGCTGCTGCCGCCACTGCTGCCGCCATCACTGCCACT
 GCTGCCACCATCACCACCACCATGGTAGCTGCTGCTCCAGTTGCTGTTGCTGCTGCTGCTGCTCCAGCTG
 CTGCTGCTGCCCCGCTCCAGCCACTGCCGCTGCTACTGCTGCTGCTGTTTCTCCAGCTGCTGCTGGTCA
 GATTCCAGCTGCTGCCTCTGTTGCCTCAGCTGCTGCCGTTGCTCCTTCTGCTGCTGCTGCTGCTGTT
 CAGGTTGCTCCAGCTGCTCCGGCTCCAGTTCAGCTCCGGCTCTGTTCCGGTTCAGCTCCAGCAGCGG
 CTCAGGCTTCTGCTCCTGCTCAGACTCAGGCACCAACTTCAGCTCCGGCTGTGGCTCCAAGTCCAGCTCC
 AACTCCAAGTCCAGCTGTGGCTCAGGCTGAGGTTCTCCTGCAAGTCCAGCTACCGGTCCTGGACCACAT
 CGTTTGTCTATACCAAGTTTGACCTGCAATCCAGACAAAACAGATGGGCCTGTGTTCCACTCCAATACTC
 TGGAAAGAAAAGTCCCATTAGATCCTGGGACAAGAGCCTGATGCAGAGATGGTGAATATCTCATC

ACGCGTACGCGGGCCGCTCGAGCAGAACTCATCTCAGAAGAGGATCTGGCAGCAATGATATCCTGGATT
 ACAAGGATGACGACGATAAGGTTTAA

Protein Sequence: >RC220347 protein sequence
 Red=Cloning site Green=Tags(s)

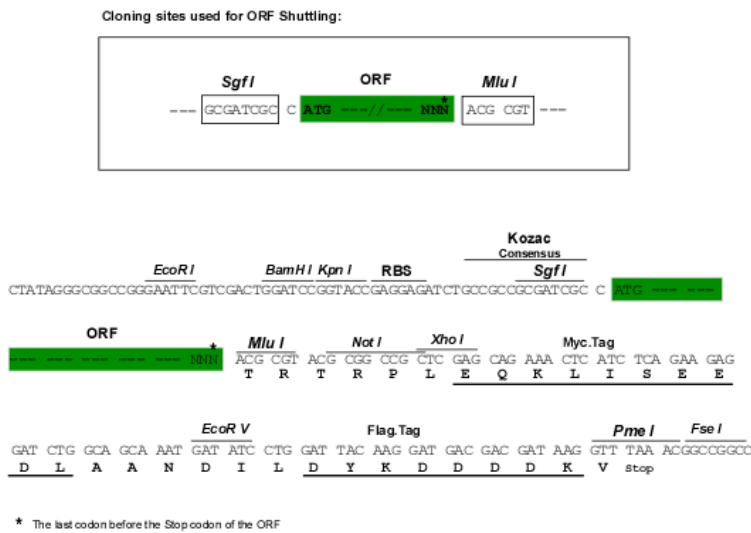
MPRAQPSSASYQVPADPFAIVSRAQQMVEILSDENRNLRQELGECYKVARLQKVETEIQRVSEAYENL
 VKSSSKREALEKAMRNKLEGEIRRMHDFNRDLRERLETANKQLAEKEYEGSEDTRKTISQLFAKNKESQR
 EKEKLEAELATARSTNEDQRRHIEIRDQALSNAQAKVVKLEELKKKQVYVDKVEKMQQALVQLQAACEK
 REQLEHRLRTRLERELESRLIQQRQGNCOPTNVSEYNAALMELLREKEERILALEADMTKWEQKYLEEN
 VMRFHALDAAATVAAQRDTTVISHSPNTSYDTALEARIQKEEEEILMANKRCLDMEGRIKTLHAQIEKD
 AMIKVLQQRSRKEPSKTEQLSCMRPAKSLMSISNAGSGLLSHSSTLTGSPIMEEKRDDKSWKSLGILLG
 GDYRAEYVPSTSPVPPSTPLLSAHSKTGSRDCSTQTERGTESNKTAAVAPISVPAPVAAAAATAAATAT
 AATITTTMVAAPVAVAAAAAPAAAAAPATAAAATAAVSPAAAGQIPAAASVASAAVAPSAAAAAAV
 QVAPAAPVPAPALVPVPAPAAAQASAPAQTSAPAVAPTPAPTPTPAVAQAEVPPASPATGPGPH
 RLSIPSLTCNPKTDGPVFHSNTLERKTPIQILGQEPDAEMVEYLI

TRTRPLEQKLISEEDLAANDILDYKDDDDKV

Chromatograms: https://cdn.origene.com/chromatograms/mk6605_d04.zip

Restriction Sites: SgfI-MluI

Cloning Scheme:



ACCN: NM_133265

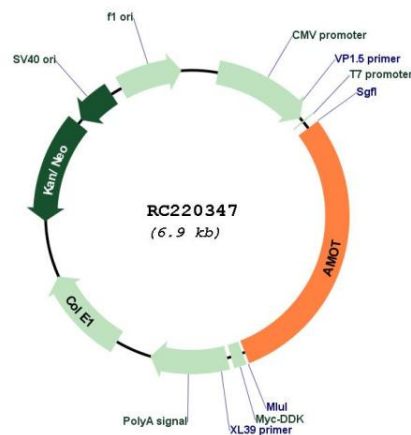
ORF Size: 2028 bp

OTI Disclaimer: The molecular sequence of this clone aligns with the gene accession number as a point of reference only. However, individual transcript sequences of the same gene can differ through naturally occurring variations (e.g. polymorphisms), each with its own valid existence. This clone is substantially in agreement with the reference, but a complete review of all prevailing variants is recommended prior to use. [More info](#)

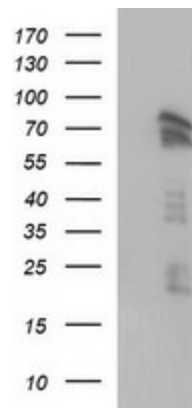
OTI Annotation: This clone was engineered to express the complete ORF with an expression tag. Expression varies depending on the nature of the gene.

- Components:** The ORF clone is ion-exchange column purified and shipped in a 2D barcoded Matrix tube containing 10ug of transfection-ready, dried plasmid DNA (reconstitute with 100 ul of water).
- Reconstitution Method:**
1. Centrifuge at 5,000xg for 5min.
 2. Carefully open the tube and add 100ul of sterile water to dissolve the DNA.
 3. Close the tube and incubate for 10 minutes at room temperature.
 4. Briefly vortex the tube and then do a quick spin (less than 5000xg) to concentrate the liquid at the bottom.
 5. Store the suspended plasmid at -20°C. The DNA is stable for at least one year from date of shipping when stored at -20°C.
- RefSeq:** [NM_133265.3](#)
- RefSeq Size:** 6514 bp
- RefSeq ORF:** 2028 bp
- Locus ID:** 154796
- UniProt ID:** [Q4VCS5](#)
- Cytogenetics:** Xq23
- MW:** 72.6 kDa
- Gene Summary:** This gene belongs to the motin family of angiotonin binding proteins characterized by conserved coiled-coil domains and C-terminal PDZ binding motifs. The encoded protein is expressed predominantly in endothelial cells of capillaries as well as larger vessels of the placenta where it may mediate the inhibitory effect of angiotonin on tube formation and the migration of endothelial cells toward growth factors during the formation of new blood vessels. Alternative splicing results in multiple transcript variants encoding different isoforms. [provided by RefSeq, Jul 2008]

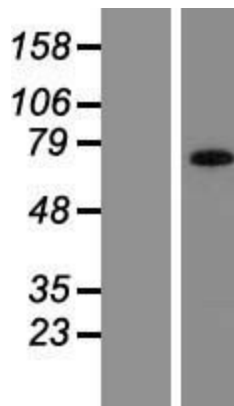
Product images:



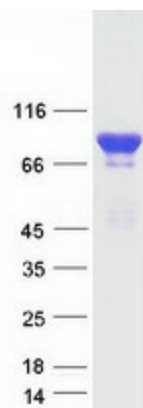
Circular map for RC220347



HEK293T cells were transfected with the pCMV6-ENTRY control (Cat# [PS100001], Left lane) or pCMV6-ENTRY AMOT (Cat# RC220347, Right lane) cDNA for 48 hrs and lysed. Equivalent amounts of cell lysates (5 ug per lane) were separated by SDS-PAGE and immunoblotted with anti-AMOT (Cat# [TA507142]). Positive lysates [LY408854] (100ug) and [LC408854] (20ug) can be purchased separately from OriGene.



Western blot validation of overexpression lysate (Cat# [LY408854]) using anti-DDK antibody (Cat# [TA50011-100]). Left: Cell lysates from untransfected HEK293T cells; Right: Cell lysates from HEK293T cells transfected with RC220347 using transfection reagent MegaTran 2.0 (Cat# [TT210002]).



Coomassie blue staining of purified AMOT protein (Cat# [TP320347]). The protein was produced from HEK293T cells transfected with AMOT cDNA clone (Cat# RC220347) using MegaTran 2.0 (Cat# [TT210002]).