

Product datasheet for **RC220338**

Paralemmin (PALM) (NM_001040134) Human Tagged ORF Clone

Product data:

Product Type:	Expression Plasmids
Product Name:	Paralemmin (PALM) (NM_001040134) Human Tagged ORF Clone
Tag:	Myc-DDK
Symbol:	Paralemmin
Synonyms:	PALM1
Mammalian Cell Selection:	Neomycin
Vector:	pCMV6-Entry (PS100001)
E. coli Selection:	Kanamycin (25 ug/mL)
ORF Nucleotide Sequence:	>RC220338 representing NM_001040134 Red=Cloning site Blue=ORF Green=Tags(s)

TTTGTAAATACGACTCACTATAGGGCGGCCGGAATTCGTCGACTGGATCCGGTACCGAGGAGATCTGCC
 GCC**CGATCGC**C

ATGGAGGTCTGGCGGCAGAGACCACGTCCCAGCAGGAGCGGCTGCAGGCCATCGCAGAGAAGCGGAAGC
 GGCAGGCGGAGATCGAGAACAAGCGCCGGCAGCTGGAGGACGAGCGGAGGCAGCTGCAGCACCTGAAGTC
 CAAGGCACTGCGGGAGCGCTGGTGTCTGGAGGGGACGCCGTCTCGGCCCTCAGAGGGGGATGAGGACCTG
 AGGAGGCAGATGCAGGACGACGAGCAGAAGACACGGCTGCTGGAGGACTCGGTGTCCAGGTTGGAGAAGG
 AAATTGAGGTGCTGGAGCGTGGAGACTCCGCCCCAGCCACTGCCAAGGAGAACCGCGCGGCCCGAGCCCC
 AGTCCGGGCCCGAGCCCCGAGTCCAGCCAAGGAGGAGCGCAAGACAGAGGTGGTGAATTCACAGCAG
 ACGCCGGTGGGCACGCCCAAAGACAAGCGAGTCTCCAACACGCCCTGAGGACGGTTGACGGCTCCCCCA
 TGATGAAGGCAGTGGTCCATGCTGTGGACGGCACCGCCGAGAACGGGATCCACCCCTGAGCTCTCCGA
 GGTGGACGAACATCCACAAAGCGGACGAGGTACGCTGAGCGAGGCAGGGTCCACGGCCGGGGCGGCA
 GAGACCCGGGGGGCTGTGGAGGGGGCAGCCCGGACCACGCCCTCCCGCGGGGAGATACCCGGTGTGAGG
 CACAGCCAGGCGAGGCCACGTCCGGCCCGCGGGATCCAGCCCGGCCAGGAGCCCCGGTCACAATGAT
 CTTTCATGGGTTACAGAACGTGGAGGATGAGGCCGAGACCAAGAAGGTGCTGGGCCTTCAAGATACCATC
 ACGGCGGAGCTGGTGGTCATCGAAGACGCGGCTGAGCCCAAGGAGCCTGCACCACCAACGGCAGTGCTG
 CCGAGCCTCCCACGGAGGCCCGCTCCAGGGAAGAGAATCAGGCGGGGCCGAGGCCACCACGCGACCC
 CCAGGACCTCGACATGAAGAAGCACCGTTGTAATGCTGCTCCATCATG

ACGCGTACGCGGCCGCTCGAGCAGAACTCATCTCAGAAGAGGATCTGGCAGCAAATGATATCCTGGATT
 ACAAGGATGACGACGATAAGGTTTAA


[View online »](#)

Protein Sequence: >RC220338 representing NM_001040134
 Red=Cloning site Green=Tags(s)

MEVLAETTSQQLRLQAIKRRKRAEIEENRRQLEDERRQLQHLKSKALRRWLLEGTPSSASEGDEDL
 RRQMDDDEQKTRLLSDSVSRLEKEIEVLERGDSAPATAKENAAAPSPVRAPAPSPAKEERKTEVVMNSQQ
 TPVGTPKDKRVSNTPRLRTVDGSPMMKAVHVDGTAENGIHPLSSSEVDELIHKADEVTLSEAGSTAGAA
 ETRGAVEGAARTTPSRREITGVQAQPGCATSGPPGIQPGQEPVMTIMFGYQNVDEAEATKKVLGLQDTI
 TAELVVIEDAAEPKEPAPPNGSAAEPTEAASREENQAGPEATTSDPQDLDMKKHRCKCCSIM

TRTRPLEQKLISEEDLAANDILDYKDDDDKV

Chromatograms: https://cdn.origene.com/chromatograms/mk8053_f01.zip

Restriction Sites: SgfI-MluI

Cloning Scheme:



ACCN: NM_001040134

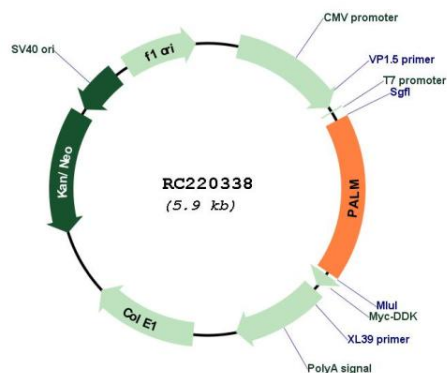
ORF Size: 1029 bp

OTI Disclaimer: Due to the inherent nature of this plasmid, standard methods to replicate additional amounts of DNA in E. coli are highly likely to result in mutations and/or rearrangements. Therefore, OriGene does not guarantee the capability to replicate this plasmid DNA. Additional amounts of DNA can be purchased from OriGene with batch-specific, full-sequence verification at a reduced cost. Please contact our customer care team at custsupport@origene.com or by calling 301.340.3188 option 3 for pricing and delivery.

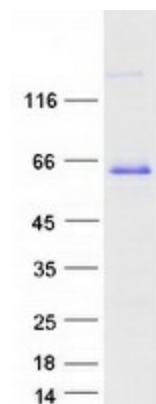
The molecular sequence of this clone aligns with the gene accession number as a point of reference only. However, individual transcript sequences of the same gene can differ through naturally occurring variations (e.g. polymorphisms), each with its own valid existence. This clone is substantially in agreement with the reference, but a complete review of all prevailing variants is recommended prior to use. [More info](#)

OTI Annotation:	This clone was engineered to express the complete ORF with an expression tag. Expression varies depending on the nature of the gene.
Components:	The ORF clone is ion-exchange column purified and shipped in a 2D barcoded Matrix tube containing 10ug of transfection-ready, dried plasmid DNA (reconstitute with 100 ul of water).
Reconstitution Method:	<ol style="list-style-type: none"> 1. Centrifuge at 5,000xg for 5min. 2. Carefully open the tube and add 100ul of sterile water to dissolve the DNA. 3. Close the tube and incubate for 10 minutes at room temperature. 4. Briefly vortex the tube and then do a quick spin (less than 5000xg) to concentrate the liquid at the bottom. 5. Store the suspended plasmid at -20°C. The DNA is stable for at least one year from date of shipping when stored at -20°C.
Note:	Plasmids are not sterile. For experiments where strict sterility is required, filtration with 0.22um filter is required.
RefSeq:	<u>NM_001040134.2</u>
RefSeq Size:	2758 bp
RefSeq ORF:	1032 bp
Locus ID:	5064
UniProt ID:	<u>O75781</u>
Cytogenetics:	19p13.3
MW:	37 kDa
Gene Summary:	This gene encodes a member of the paralemmin protein family. The product of this gene is a prenylated and palmitoylated phosphoprotein that associates with the cytoplasmic face of plasma membranes and is implicated in plasma membrane dynamics in neurons and other cell types. Several alternatively spliced transcript variants have been identified, but the full-length nature of only two transcript variants has been determined. [provided by RefSeq, Jul 2008]

Product images:



Circular map for RC220338



Coomassie blue staining of purified PALM protein (Cat# [TP320338]). The protein was produced from HEK293T cells transfected with PALM cDNA clone (Cat# RC220338) using MegaTran 2.0 (Cat# [TT210002]).