

Product datasheet for RC220336

Liprin alpha 2 (PPFIA2) (NM_003625) Human Tagged ORF Clone

Product data:

Product Type:	Expression Plasmids
Product Name:	Liprin alpha 2 (PPFIA2) (NM_003625) Human Tagged ORF Clone
Tag:	Myc-DDK
Symbol:	Liprin alpha 2
Mammalian Cell Selection:	Neomycin
Vector:	pCMV6-Entry (PS100001)
E. coli Selection:	Kanamycin (25 ug/mL)
ORF Nucleotide Sequence:	>RC220336 representing NM_003625 Red=Cloning site Blue=ORF Green=Tags(s)

TTTTGTAATACGACTCACTATAGGGCGGCCGGAATTCGTCGACTGGATCCGGTACCGAGGAGATCTGCC
GCCCGATCGCC

ATGATGTGTGAAGTGATGCCACGATTAATGAGGACACCCCAATGAGCCAAAGGGGTCCCAAAGCAGTG
GCTCGGACTCAGACTCCCATTTTGAGCAGCTGATGGTGAATATGCTAGATGAAAGGGATCGTCTTCTAGA
CACCTTCGGGAGACCCAGGAAAGCCTCTCACTTGCCAGCAAAGACTTCAGGATGTCATCTATGACCGA
GACTCACTCCAGAGACAGCTCAATTCAGCCCTGCCACAGGATATCGAATCCCTAACAGGAGGCTGGCTG
GTTCTAAGGGGGCTGATCCACCGGAATTTGCTGCACTGACAAAAGAATTAATGCCTGCAGGGAACAAT
TCTAGAAAAGGAAGAAGAAATCTCTGAACCTTAAAGCTGAAAGAAACAACAAGACTATTACTGGAGCAT
TTGGAGTGCCTTGTCACGACATGAAAGATCACTAAGAATGACGGTGGTAAAACGGCAAGCCAGTCTC
CCTCAGGAGTATCCAGTGAAGTTGAAGTTCTCAAGGCACTGAAATCTTTGTTGAGCACCACAAGCCCTT
GGATGAAAAGGTAAGGGAGCGACTGAGGGTTTCTTTAGAAAGAGTCTCTGCACTGGAAGAAGAACTAGCT
GCTGCTAATCAGGAGATTGTTGCCTTGCCTGAACAAAATGTTTCATATACAAAGAAAAATGGCATCAAGCG
AGGGATCCACAGAGTCAGAACATCTTGAAGGGATGGAACCTGGACAGAAAGTCCATGAGAAGCGTTTGTG
CAATGGTTCTATAGACTCAACCGATGAACTAGTCAAATAGTTGAACTACAAGAATTGCTTGAAGGCAA
AACTATGAAATGGCCAGATGAAAGAACGTTTAGCAGCCCTTTCTCCCGAGTGGGAGAGGTGGAACAGG
AAGCAGAGACAGCAAGAAAGGATCTCATTAAAACAGAAGAAATGAACACCAAGTATCAAAGGACATTAG
GGAGGCCATGGCAGAAAAGGAAATATGGAAGAAAGAATTACAACCCCTGAAAAGCGTTACCTCAGTGCT
CAGAGAGAATCTACCTCCATACATGACATGAATGATAAACTAGAAAATGAGTTAGCAAATAAAGAAGCTA
TCCTGCGGCAGATGGAAGAGAAAAACAGACAGTTACAAGAACGCTTTGAGCTAGCTGAACAAAAGTTGCA
GCAGACCATGAGAAAGGCTGAAACCTTGCTGAAAGTAGAGGCTGAACTGGCTCAGAGAATTGCAGCCCTA
ACCAAGGCTGAAGAGAGACATGGAATATTGAAGAACGTATGAGACATTTAGAGGGTCAACTGAAGAGA
AGAATCAAGAACCTCAAAGAGCTAGGCAAAGAGAGAAAAATGAATGAGGAGCATAACAAGAGATTATCGGA
TACGGTTGATAGACTTCTGACTGAATCCAATGAACGCCTACAACACTAAAGGAAAGAATGGCTGCT
CTAGAAGAAAAGAATGTTTTAATCAAGAATCAGAAACTTTAGAAAGAATCTTGAAGAATCTTTACATG
ATAAGGAAAGATTAGCAGAAGAAATGAAAAGCTGAGATCTGAACCTTGACCAATTGAAAATGAGAACTGG



[View online »](#)

CTCTTTAATTGAACCCACAATACCAAGAACTCATCTAGACACCTCAGCTGAGTTGCGGACTCAGTGGGA
 TCCCTAGTGGACAGCCAGTCTGATTACAGAACAATAAGTAATAAGAAGACCAAGGAGAGGCCGCATGG
 GTGTGCGAAGAGATGAGCCAAAGGTGAAATCTCTTGGGGATCACGAGTGGAAATAGAACTCAACAGATTGG
 AGTACTAAGCAGCCACCCCTTTTGAAGTGACACTGAAATGTCTGATATTGATGATGACAGAGAAACA
 ATTTTTAGCTCAATGGATCTTCTCTCCAAGTGGTCATTCGGATGCCAGACGCTAGCCATGATGCTTC
 AGGAACAATTGGATGCCATCAACAAAGAAATCAGGCTAATTCAGGAAGAAAAAGAACTACAGAGTTGCC
 TGCTGAAGAAATTGAAAATAGAGTGGCTAGTGTGAGCCTCGAAGGCCTGAATTTGGCAAGGGTCCACCCA
 GGTACCTCCATTACTGCCTCTGTTACAGCTTCATCGCTGGCCAGTTCATCTCCCCCAGTGGACACTCAA
 CTCCAAAGCTCACCCCTCGAAGCCCTGCCAGGAAATGGATCGGATGGGAGTCATGACACTGCCAAGTGA
 TCTGAGGAAACATCGGAGAAAGATTGCAGTTGTGGAAGAAGATGGTCGAGAGGACAAAGCAACAATAAA
 TGTGAAACTTCTCCTCCTACCCCTAGAGCCCTCAGAATGACTCACACTCTCCCTTCTCCTACCACA
 ATGATGCTCGAAGTAGTTTATCTGTCTCTTGAGCCAGAAAGCCTCGGGCTTGGTAGTCCAACAGCAG
 CCAAGACTCTTTCACAAAGCCCCAAGAAGAAAGGAATCAAGTCTTCAATAGGACGTTTGTGGTAA
 AAAGAAAAGCTCGACTTGGGCAGCTCCGAGGCTTTATGGAGACTGAAGCTGCAGCTCAGGAGTCCCTGG
 GGTAGGCAAACCGAACTCAAGCTGAGAAGGATCGAAGACTAAAGAAAAGCATGAACCTCTTGAAGA
 AGCTCGGAGAAAAGGATTACCTTTTGCCTAGTGGGATGGGCAACTGTGGTCGCATGGCTAGAGCTTTGG
 TTGGGAATGCCTGCGTGGTACGTGGCAGCCTGCCGAGCCAACGTGAAGAGTGGTGCCATCATGTCTGCTT
 TATCTGACACTGAGATCCAGAGAGAAAATGGAATCAGCAATCCACTGCATCGCTTAAAACCTCGATTAGC
 AATCCAGGAGATGGTTTTCCCTAACAAAGTCTTACAGCTCCTCCAACATCTCGAACTCCTCAGGCAACGTT
 TGGGTGACTCATGAAGAAATGAAAAATCTGCAGCTCCAGCAAAAACGAAAGAATCTGAGGAAGGAAGCT
 GGGCCAGTGTCCGGTTTTCTACAGACCCTGGCTTATGGAGATATGAATCATGAGTGGATTGGAAATGA
 ATGGCTTCCCAGCTTGGGGTACCTCAGTACAGAAGTTACTTTATGGAATGCTTGGTAGATGCAAGAATG
 TTAGATCACCTAACAAAAAAGATCTCCGTGCCATTTAAAAATGGTGGATAGTTCCATCGAACAAAGTT
 TACAATATGGAATTATGTGCTTAAAGAGGTTGAATTATGACAGAAAAGAACTAGAAAAGAAGACGGGAAGC
 AAGCCAACATGAAATAAAAGACGTGTTGGTGTGGAGCAATGACCGAGTTATTCGCTGGATACAAGCAATT
 GGACTTCGAGAATATGCAATAATATACTTGAGAGCGGTGTCATGGCTCACTTATAGCCCTGGATGAAA
 ACTTTGACTACAGCAGCTTAGCTTTATTATTACAGATTCCAACACAGAACACCCAGGCAAGGCAGATTCT
 TGAAGAGAAATAACAATAACCTCTTGGCCCTGGAACTGAAAGGCGACTGGATGAAAGTATGACAAGAAC
 TTCAGACGTGGATCAACCTGGAGAAGGCAGTTTCTCCTCGTGAAGTACATGGAATCAGCATGATGCCTG
 GGTCTCAGAAACATTACCAGCTGGATTTAGGTTAACCACAACCTCTGGGCAGTCAAGAAAATGACAAC
 AGATGTTGCTTCATCAAGACTGCAGAGGTTAGACAACCTCACTGTTCCGCACATACTCATGT

ACGCGTACGCGGCGCTCGAGCAGAACTCATCTCAGAAGAGGATCTGGCAGCAAATGATATCCTGGATT
 ACAAGGATGACGACGATAAGGTTTAA

Protein Sequence: >RC220336 representing NM_003625
 Red=Cloning site Green=Tags(s)

MMCEVMP TINEDTPMSQRGSQSSGSDSDSHFEQLMVNMLDERDRLLDTLRETQESLSLAQQRLQDVIYDR
 DSLQRQLNSALPQDIESLTGGLAGSKGADPPEFAALTKELNACREQLLEKEEIESELKAERNRLLLEH
 LECLVSRHERSLRMTVVKRQAQSPSGVSEVEVLKALKSLFEHHKALDEKVRERLRSVSLERVSAL EEELA
 AANQEI VALREQNVHIQRKMASSEGSTSEHLEGMPEGQKVHEKRLSNGSIDSTDETSQIVELQELLEKQ
 NYEMAQMKERLAALSSRVGEVEQEAETARKDLIKTEEMNTKYQRDIREAMAQKEDMEERITTTLEKRYLSA
 QRESTS IHDMNDKLENELANKEAILRQMEEKNRQLQERLELAEQKLQQTMRKAETLPEVEAE LAQRIAAL
 TKAEERHGNI EERMRLHLEGQLEEKNQELQRARQREKMNEEHNRKLSDTVDRLLTESNERLQLHLKERMAA
 LEEKNVL IQESETFRKNLEESLHDKERLAEIEKLRSELDQLKMRGSLIEPTIPRTHLDTSAELRYSVG
 SLVDSQSDYRTTKVIRRRPRRGRMGVRRDEPKVKSLGDHEWNRTQQIGVLSHPFESDTEMSDIDDDDDRET
 IFSSMDLLSPSGHSDAQTLAMMLQEQLDAINKEIRLIQEEKESTELRAEIEENRVASVSL EGNLNRVHP
 GTSITASVTASSLASSPSPGHSTPKLTPRSPAREMDRMGVM TLP SDLRKHRRKIAVVEEDGREDKATIK
 CETSPPTPRALRMTHTLPSSYHNDARSSL SVSLEPESLGLGSANSSQDSLHKAPKKKGIKSSIGRLFGK
 KEKARLGQLRGFMETEA AAQESLGLGKLTQA EKDRRLKKKHELLEEARRKGLPF AQWDGPTVVAWLELW
 LGMPAWYVAACRANVKSGAIMSALSDTEIQREIGISNPLHRLKRLAIQEMVSLTSPSAPTSRTPSGNV
 WYTHEEMENLAAPAKTKESEEGSWAQC PVFLQTLAYGDMNHEWIGNEWLP SGLPQYRSYFMECLVDARM
 LDHLTKKDLRVHLKMVDSFHRTSLQYGIMCLKRLNYDRKELERRREASQHEIKDVLVWSNDRVIRWIQAI
 GLREYANNILESGVHGSLIALDENFDYSS LALLLQIPTQNTQARQILEREYNNLLALGTERRLDESDDKN
 FRRGSTWRRQFPFREVHGISMMPGSSETLPAGFRLTTTSGQSRKMTTDVASSRLQRLDNSTVRYTSC

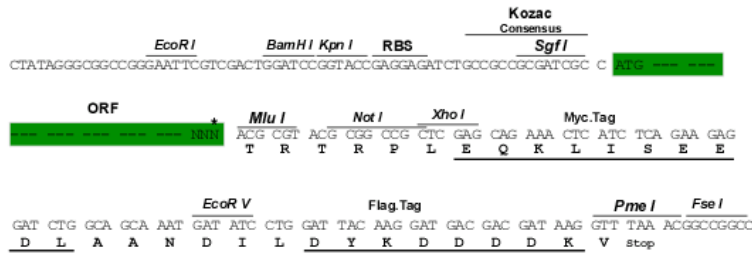
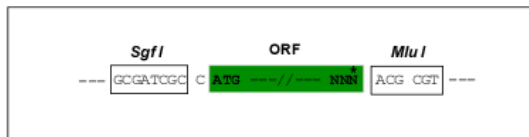
TRTRPLEQKLISEEDLAANDILDYKDDDDKV

Chromatograms: https://cdn.origene.com/chromatograms/mk8020_b10.zip

Restriction Sites: Sgfl-MluI

Cloning Scheme:

Cloning sites used for ORF Shuttling:



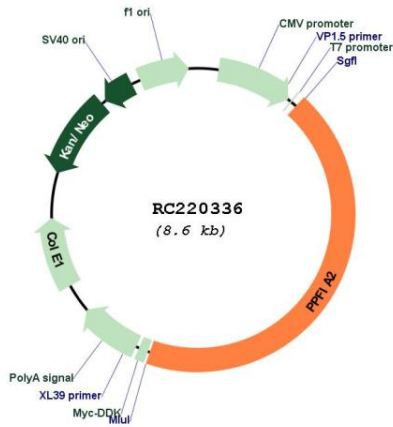
* The last codon before the Stop codon of the ORF

ACCN: NM_003625

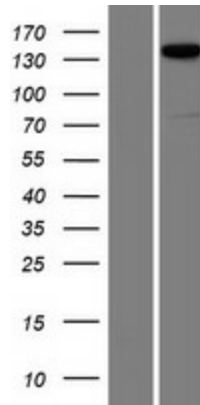
ORF Size: 3771 bp

OTI Disclaimer:	The molecular sequence of this clone aligns with the gene accession number as a point of reference only. However, individual transcript sequences of the same gene can differ through naturally occurring variations (e.g. polymorphisms), each with its own valid existence. This clone is substantially in agreement with the reference, but a complete review of all prevailing variants is recommended prior to use. More info
OTI Annotation:	This clone was engineered to express the complete ORF with an expression tag. Expression varies depending on the nature of the gene.
Components:	The ORF clone is ion-exchange column purified and shipped in a 2D barcoded Matrix tube containing 10ug of transfection-ready, dried plasmid DNA (reconstitute with 100 ul of water).
Reconstitution Method:	<ol style="list-style-type: none">1. Centrifuge at 5,000xg for 5min.2. Carefully open the tube and add 100ul of sterile water to dissolve the DNA.3. Close the tube and incubate for 10 minutes at room temperature.4. Briefly vortex the tube and then do a quick spin (less than 5000xg) to concentrate the liquid at the bottom.5. Store the suspended plasmid at -20°C. The DNA is stable for at least one year from date of shipping when stored at -20°C.
RefSeq:	NM_003625.5
RefSeq Size:	4052 bp
RefSeq ORF:	3774 bp
Locus ID:	8499
UniProt ID:	O75334
Cytogenetics:	12q21.31
Domains:	SAM
Protein Families:	Druggable Genome
MW:	143.1 kDa
Gene Summary:	The protein encoded by this gene is a member of the LAR protein-tyrosine phosphatase-interacting protein (liprin) family. Liprins interact with members of LAR family of transmembrane protein tyrosine phosphatases, which are known to be important for axon guidance and mammary gland development. It has been proposed that liprins are multivalent proteins that form complex structures and act as scaffolds for the recruitment and anchoring of LAR family of tyrosine phosphatases. This protein has been shown to bind the calcium/calmodulin-dependent serine protein kinase (MAGUK family) protein (also known as CASK) and proposed to regulate higher-order brain functions in mammals. Alternative splicing results in multiple transcript variants. [provided by RefSeq, Sep 2013]

Product images:



Circular map for RC220336



Western blot validation of overexpression lysate (Cat# [LY418542]) using anti-DDK antibody (Cat# [TA50011-100]). Left: Cell lysates from untransfected HEK293T cells; Right: Cell lysates from HEK293T cells transfected with RC220336 using transfection reagent MegaTran 2.0 (Cat# [TT210002]).