

Product datasheet for **RC220334**

CRNKL1 (NM_016652) Human Tagged ORF Clone

Product data:

Product Type:	Expression Plasmids
Product Name:	CRNKL1 (NM_016652) Human Tagged ORF Clone
Tag:	Myc-DDK
Symbol:	CRNKL1
Synonyms:	CLF; Clf1; CRN; HCRN; MSTP021; SYF3
Mammalian Cell Selection:	Neomycin
Vector:	pCMV6-Entry (PS100001)
E. coli Selection:	Kanamycin (25 ug/mL)



[View online »](#)

ORF Nucleotide
Sequence:

>RC220334 representing NM_016652
Red=Cloning site Blue=ORF Green=Tags(s)

TTTTGTAATACGACTCACTATAGGGCGGCCGGGAATTCGTCGACTGGATCCGGTACCGAGGAGATCTGCC
GCC**CGGATCGCC**

ATGACGGCAACAGTGGAGAACCTAACGTTCCAGAAGGACACTTTGGGAAATGCTGTTGACAAAAACACAT
CCAGATTGGAGCTCCGTTCTTACTCCCTTGCAGGGCGCCACGGCTCGACAGAGCCACTCGTCTCGCCTG
GTCATCCCAAGTCCGGAGGCTGACCTGGGGATGCGCCCTGGACGCCCTGCACCGCAGTCTTGCCTCGCT
GCTAGTCAGCACGGCGTTACCCACCTCATCCGAGCTCCAGGACGCCGACTCCACGCGCTGCCGAAGG
AGGACGCGCAGCCTGGTACCATGGAACGGTCCGCCTCCGTCACGGCTCAAGCAGAGGTCAAAGGTC
AGTCTGCAAGTCCGCTCCGGTCCGAGATCTGTTTGTCTGAAAGCTTTGTGGTTTCGGTGAGC
TCTCAGAGCCGATTTCTAGCGTCCGTGCCGGGACAGGTGTCCAGAGGTCGACTGCTGCAGACATGGCGG
CCTCCACCGCGGCCGGGAAGCAGCGGATCCCAAAGTGGCCAAGGTGAAAAACAAAGCCCGGCTGAGGT
ACAGATAACTGCTGAACAACTCTTAAGAGAGGCTAAAGAAAGAGAACTTGAGCTTCTCCACCTCCACCT
CAACAGAAAGATCACAGATGAAGAAGAATTAATGATTATAAACTAAGGAAAAGGAAGACTTTTGAAGATA
ATATAAGAAAAACAGGACTGTGATTAGTAACTGGATAAAAATACGCACAATGGGAAGAAAGCCTAAAGGA
GATTCAAAGGGCTCGATCCATATACGAGCGTGCTTAGATGTAGACTACCGAAATATTACACTCTGGCTG
AAATACGCAGAAATGAAATGAAGAATCGCCAAGTCAACCATGCTCGAAATATCTGGGACCGGGCCATAA
CAACGCTGCCTCGAGTTAATCAGTTCGGTACAAGTACACGTACATGGAGGAAATGTTGGGAAACGTTGC
CGGTGCCCGCAGGTGTTGAGCGCTGGATGGAGTGGCAGCCTGAGGAGCAAGCCTGGCACTCTACATC
AACTTTGAGCTGAGATACAAAGAGGTGGATCGGGCCCGCACCATTATGAGCGATTTGCTCCTCGTGACC
CTGATGTTAAGAACTGGATCAAGTATGCCCGCTTTGAAGAAAAACATGCTTATTTGCCCATGACCGGAA
AGTGATGAGAGAGCTGTGGAATCTTTGGAGATGAACATATGGATGAGCACCTTTATGTTGCCTTTGCC
AAGTTTGAAGAAAATCAGAAAGAGTTTGAAGGGTACGAGTGATTTACAAGTATGCCCTGGACAGAATTT
CAAAACAAGATGCCCAAGAACTCTTAAAAATTATACCATCTTTGAGAAGAAGTTTGGTATAGGCGGGG
TATTGAAGATATCATTGTGAGCAAACGGAGATTCCAGTACGAAGAAGAAGTGAAGCGAATCCACACAAT
TATGATGCATGGTTTACTTGCCTTGGTAGAAAGTACGCGAGAAGCTGAAGCCGTGAGAGAAGTCT
ATGAAAGGGCCATTGCCAATGTCCACCCATTGAGGAGAAGGCACTGGAAGCGCTACATTTATCTTTG
GATCAACTATGCACTCTATGAAGAATTGGAGGCAAAGGATCCTGAGAGGACAAGACAGGTGTATCAAGCC
TCTTTGGAATAATTCTCACAAAAAGTTCACATTTGCCAAAATGTGGATACTGTATGCACAGTTTGAAA
TACGACAGAAGAATCTGTCAATTAGCCAGAAGAGCATTGGGAACTCCATAGGCAAATGTCCAAGAACA
ATTATTTAAAGTTTACATAGAATTGGAGCTACAGCTTCGAGAATTTGACAGATGCCGGAAGCTTTATGAA
AAGTTCCTGGAATTTGGACCTGAAAATTGTACCTCATGGATTAATTCGCTGAATTAGAGACAATCCTTG
GTGATATTGACAGAGCACGGGCAATCTATGAATTAGCCATCAGTCAGCCAGCTTTAGACATGCCAGAGGT
GCTTTGGAATCATATATTGATTTTGAATTGAGCAGGAAGAAACAGAAAGAACACGAAACCTTTACCGG
CGGTTGCTTCAACGGACGCAGCATGTCAAGGTATGGATCAGCTTTGCTCAGTTTGAGTTGCTTTCAGGAA
AAGAAGGAAGTTTGACTAAATGCAGACAAATTTATGAAGAAGCTAACAAAACCATGCGAAACTGTGAAGA
AAAGGAAGAGAGACTTATGCTGCTGGAATCTTGCGCAAGTTTGAAGAAGAATTTGGAACAGCTTCAGAT
AAGGAGAGAGTAGACAACTCATGCCAGAGAAAGTCAAGAAGAGAAGAAAGGTCCAGACTGATGGGT
CTGATGCAGGCTGGGAAGAATACTTTGATTACATCTTTCCAGAAGATGCTGCCAACCAACCTAACCTCAA
ACTCCTGGCCATGGCAAACCTGTGGAAGAAACAGCAGCAGGAAAAGGAGGATGCTGAGCACCATCCAGAT
GAGGACGTCGATGAGAGTGAATCC

ACGCGTACGCGGCCGCTCGAGCAGAACTCATCTCAGAAGAGGATCTGGCAGCAAATGATATCCTGGATT
ACAAGGATGACGACGATAAGGTTTAA

Protein Sequence: >RC220334 representing NM_016652
 Red=Cloning site Green=Tags(s)

MTATVENLTFQKDTLGNVADKNTSRLELRSYSLAGRHGSTEPLVLAWSSQFRRLTWGCALDALHRSPCVA
 ASQHGVTHLIRSSRTPHSTRCKEDAQP GHHGNGAASVTAQARGQRSVLQVPLPVP RSCLFSESFVVSVS
 SQSRFLASVPGTVQRSTAADMAASTAGKQRIPKVAKVKNKAPAEVQITAEQLLREAKERELLEPPPP
 QQKITDEEELNDYKLRKRKTFEDNIRKNRTVISNWKIYAQWEESLKEIQRARSIERALD VYRNITLWL
 KYAEMEMKNRQVNHARNIWDRAITTLPRVNQFWYKYTYMEMLGNVAGARQVFERWMEWQPEEQAWHSYI
 NFEFLRYKEVDRARTIYERFVLVHPDVKNWIKYARFEEKHAYFAHARKVYERAVEFFGDEHMHDEHLVYAF
 KFEENQKEFERVRIYKYALDRISKQDAQELFKNYTIFEKKGDRRGIEDIIVSKRRFQYEEEVKANPHN
 YDAWFDYLRVESDAEAEAVREYERAIANVPPIQEKRWKRYIYLWINYALYEELEAKDPERTRQVYQA
 SLELIPHKKFTFAKMWILYAQFEIRQKNLSLARRALGTSIGKCPKNLKFVYIELEQLREFDRCKLYE
 KFLEFGPENTSWIKFAELETILGDIDRARIYELAISQPRLDMP EVLWKS YIDFIEEQEETERNLRYR
 RLLQRTQHVKVI SFAQFELSSGKEGSLTKCRQIYEEANKTMRNCEEKEERLMLLESWRSFEFFEGTASD
 KERVDKLMPEKVKRRKRVQTDGSDAGWEEYFDYIFPEDAANQPNLKLLAMAKLWKKQQQEKEDA EHHHPD
 EDVDESES

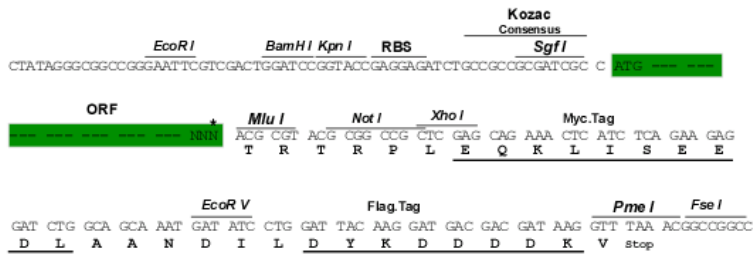
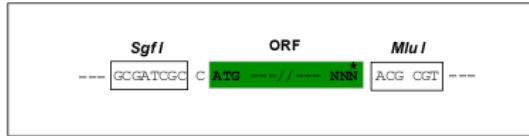
TRTRPLEQKLISEEDLAANDILDYKDDDDKV

Chromatograms: https://cdn.origene.com/chromatograms/mk8020_b11.zip

Restriction Sites: SgfI-MluI

Cloning Scheme:

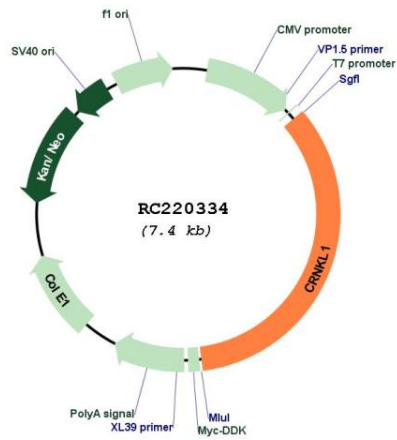
Cloning sites used for ORF Shuttling:



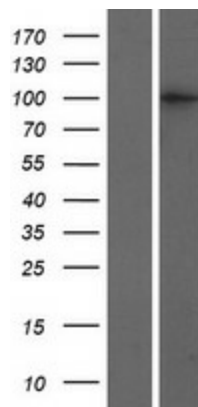
* The last codon before the Stop codon of the ORF

ACCN:	NM_016652
ORF Size:	2544 bp
OTI Disclaimer:	The molecular sequence of this clone aligns with the gene accession number as a point of reference only. However, individual transcript sequences of the same gene can differ through naturally occurring variations (e.g. polymorphisms), each with its own valid existence. This clone is substantially in agreement with the reference, but a complete review of all prevailing variants is recommended prior to use. More info
OTI Annotation:	This clone was engineered to express the complete ORF with an expression tag. Expression varies depending on the nature of the gene.
Components:	The ORF clone is ion-exchange column purified and shipped in a 2D barcoded Matrix tube containing 10ug of transfection-ready, dried plasmid DNA (reconstitute with 100 ul of water).
Reconstitution Method:	<ol style="list-style-type: none">1. Centrifuge at 5,000xg for 5min.2. Carefully open the tube and add 100ul of sterile water to dissolve the DNA.3. Close the tube and incubate for 10 minutes at room temperature.4. Briefly vortex the tube and then do a quick spin (less than 5000xg) to concentrate the liquid at the bottom.5. Store the suspended plasmid at -20°C. The DNA is stable for at least one year from date of shipping when stored at -20°C.
RefSeq:	NM_016652.5 , NP_057736.4
RefSeq Size:	4406 bp
RefSeq ORF:	2547 bp
Locus ID:	51340
UniProt ID:	Q9BZJ0
Cytogenetics:	20p11.23
Protein Pathways:	Spliceosome
MW:	100.3 kDa
Gene Summary:	The crooked neck (crn) gene of Drosophila is essential for embryogenesis and is thought to be involved in cell cycle progression and pre-mRNA splicing. A protein encoded by this human locus has been found to localize to pre-mRNA splicing complexes in the nucleus and is necessary for pre-mRNA splicing. Alternatively spliced transcript variants have been described. [provided by RefSeq, Jul 2013]

Product images:



Circular map for RC220334



Western blot validation of overexpression lysate (Cat# [LY413851]) using anti-DDK antibody (Cat# [TA50011-100]). Left: Cell lysates from untransfected HEK293T cells; Right: Cell lysates from HEK293T cells transfected with RC220334 using transfection reagent MegaTran 2.0 (Cat# [TT210002]).