

Product datasheet for RC220332

SFTPA1 (NM_005411) Human Tagged ORF Clone

Product data:

Product Type:	Expression Plasmids
Product Name:	SFTPA1 (NM_005411) Human Tagged ORF Clone
Tag:	Myc-DDK
Symbol:	SFTPA1
Synonyms:	COLEC4; PSAP; PSP-A; PSPA; SFTP1; SFTPA1B; SP-A; SP-A1; SP-A1 beta; SP-A1 delta; SP-A1 epsilon; SP-A1 gamma; SPA; SPA1
Mammalian Cell Selection:	Neomycin
Vector:	pCMV6-Entry (PS100001)
E. coli Selection:	Kanamycin (25 ug/mL)
ORF Nucleotide Sequence:	>RC220332 ORF sequence Red=Cloning site Blue=ORF Green=Tags(s)

TTTTGTAATACGACTCACTATAGGGCGGCCGGAATTCGTCGACTGGATCCGGTACCGAGGAGATCTGCC
GCCGCGATCGCC

ATGTGGCTGTGCCCTCTGGCCCTCAACCTCATCTTGATGGCAGCCTCTGGTGCTGTGTGCCAAGTGAAGG
ACGTTTGTGTTGGAAGCCCTGGTATCCCCGGCACTCCTGGATCCCACGGCCTGCCAGGCAGGGACGGGAG
AGATGGTCTCAAAGGAGACCCTGGCCCTCCAGGCCCATGGGTCCACCTGGAGAAATGCCATGTCCTCCT
GGAAATGATGGGCTGCCTGGAGCCCTGGTATCCCTGGAGAGTGTGGAGAGAAGGGGGAGCCTGGCGAGA
GGGGCCCTCCAGGGCTTCCAGCTCATCTAGATGAGGAGCTCAAGCCACACTCCACGACTTAGACATCA
AATCCTGCAGACAAGGGGAGCCCTCAGTCTGCAGGGCTCCATAATGACAGTAGGAGAGAAGGTCTTCTCC
AGCAATGGGCAGTCCATCACTTTTGTATGCCATTCAGGAGGCATGTGCCAGAGCAGGCGGCCGATTGCTG
TCCAAGGAATCCAGAGGAAAATGAGGCCATTGCAAGCTTCGTGAAGAAGTACAACATATGCCTATGT
AGGCTGACTGAGGGTCCCAGCCCTGGAGACTCCGCTACTCAGACGGGACCCCTGTAACTACACCAAC
TGGTACCGAGGGGAGCCCGCAGGTGGGGAAAAGAGCAGTGTGTGGAGATGTACACAGATGGGCAGTGGGA
ATGACAGGAAGTGCCTGTACTCCCGACTGACCATCTGTGAGTTC

ACGCGTACGCGGCCGCTCGAGCAGAACTCATCTCAGAAGAGGATCTGGCAGCAAATGATATCCTGGATT
ACAAGGATGACGACGATAAGGTTTAA



[View online »](#)

Reconstitution Method:

1. Centrifuge at 5,000xg for 5min.
2. Carefully open the tube and add 100ul of sterile water to dissolve the DNA.
3. Close the tube and incubate for 10 minutes at room temperature.
4. Briefly vortex the tube and then do a quick spin (less than 5000xg) to concentrate the liquid at the bottom.
5. Store the suspended plasmid at -20°C. The DNA is stable for at least one year from date of shipping when stored at -20°C.

RefSeq: [NM_005411.5](#)

RefSeq Size: 2230 bp

RefSeq ORF: 747 bp

Locus ID: 653509

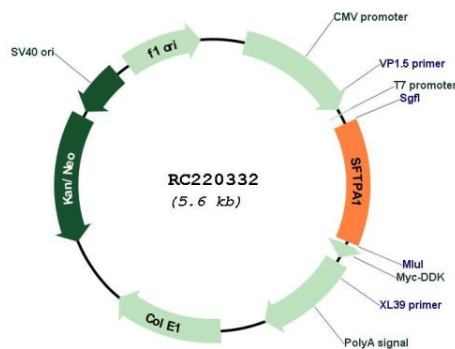
UniProt ID: [Q8IWL2](#)

Cytogenetics: 10q22.3

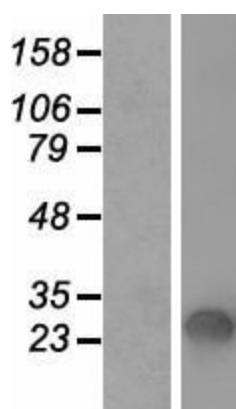
MW: 26.2 kDa

Gene Summary: This gene encodes a lung surfactant protein that is a member of a subfamily of C-type lectins called collectins. The encoded protein binds specific carbohydrate moieties found on lipids and on the surface of microorganisms. This protein plays an essential role in surfactant homeostasis and in the defense against respiratory pathogens. Mutations in this gene are associated with idiopathic pulmonary fibrosis. Alternate splicing results in multiple transcript variants. [provided by RefSeq, May 2010]

Product images:



Circular map for RC220332



Western blot validation of overexpression lysate (Cat# [LY431810]) using anti-DDK antibody (Cat# [TA50011-100]). Left: Cell lysates from untransfected HEK293T cells; Right: Cell lysates from HEK293T cells transfected with [RC228782] using transfection reagent MegaTran 2.0 (Cat# [TT210002]).