

Product datasheet for RC220331

PYGO1 (NM_015617) Human Tagged ORF Clone

Product data:

Product Type:	Expression Plasmids
Product Name:	PYGO1 (NM_015617) Human Tagged ORF Clone
Tag:	Myc-DDK
Symbol:	PYGO1
Mammalian Cell Selection:	Neomycin
Vector:	pCMV6-Entry (PS100001)
E. coli Selection:	Kanamycin (25 ug/mL)
ORF Nucleotide Sequence:	>RC220331 representing NM_015617 Red=Cloning site Blue=ORF Green=Tags(s)

TTTTGTAATACGACTCACTATAGGGCGGCCGGAATTCGTCGACTGGATCCGGTACCGAGGAGATCTGCC
GCCCGATCGCC

ATGCCCGCCGAGAACTCTCCAGCTCCCGTTACAAAGTTTCTCGCATGGTGGTGATAGTGGACTGGATG
GGTTAGGAGGACCAGGTGTACAACCTAGGAAGCCAGATAAGAAAAAGCGCAAGGCAAATACACAGGGACC
TTCTTTCCCTCCATTGTCTGAGTATGCTCCACCACCGAATCCAACTCTGACCATCTAGTGGCTGCTAAT
CCATTTGATGACAATAAATACTATTTCTATAAACCACTACCTTCGTCAAATCCATATCTTGGCCCTG
GTTATCCTGGCTTTGGAGGCTATAGTACATTCAGAATGCCACCTCACGTTCCCCAAGAATGTCTCCCC
ATACTGTGGTCTTACTCACTCAGGAACCCACACCCATTTCTCAGAATCCTCTGGGCATGGGTTTT
AATCGACCTCATGCTTTAACTTTGGGCCACATGATAATTCAAGTTTCGGTAATCCATCTTATAAATG
CACTAAGTCAGAAATGCAACATGCCTAATCAACATTTTAGACAAAATCCTGCTGAAAATTCAGTCAAAT
TCCTCCACAGAATGCTAGCCAAGTTTCTAACCCGATTTGGCATCTAATTTTGTCTGGAAATAATTCA
AATTTTACTTCTCCGTTAGAATCTAATCATTTTATTCTCCCCAACACTTTTGGTCAAGCAAAG
CACCACCCCAAAACAAGACTTTACTCAAGGAGCAACCAAAACACTAATCAAATTCCTCTGCTCATCC
ACCTCACTTGAATATGGATGACACAGTGAATCAGAGTAATATTGAATAAAAATGTTAATCGAAACAAT
GCAGTAAATCAGGAGAACAGCCGTTCAAGTAGCACTGAAGCCACAAACAATAACCTGCAATGGGACGC
AGAATAAGCCACGACAACCAAGAGGTGCAGCAGATGCCTGCACCACAGAAAAAGCAATAAATCCTCTCT
TACCCAAACCGTCATGGCCATTCGTTCTGACCCAGTGTATCCTTGTGGAATTTGTACAACGAGGTG
AACGATGATCAGGATGCCATCTTATGTGAGGCCTCTTGTGAGAAATGGTTTCATCGGATCTGACTGGAA
TGACTGAAACAGCTTATGGCCTCTTAACTGCAGAAGCATCTGCAGTATGGGGCTGTGATACCTGTATGGC
TGACAAAGATGTCCAGTTAATGCGTACTAGAGAACTTTTGGTCCATCTGCAGTGGGCAGTGATGCT

ACGCGTACGCGGCCGCTCGAGCAGAACTCATCTCAGAAGAGGATCTGGCAGCAAATGATATCCTGGATT
ACAAGGATGACGACGATAAGGTTTAA



[View online »](#)

Protein Sequence: >RC220331 representing NM_015617
Red=Cloning site Green=Tags(s)

MPAENSPAPAYKVSSHGGDSGLDGLGGPGVQLGSPDKKKRKANTQGPSFPPLSEYAPPPNPNSDHLVAAN
 PFDDNYNTISYKPLPSSNPYLPGYPGFGGYSTFRMPPHVPPRMSSPYCGPYSLRNQPHFPQNPLGMGF
 NRPHAFNFGPHDNSSFGNPSYNNALSQNVNMPNQHFQRQPAENFSQIPPQNASQVSNPDLASNFVPGNNS
 NFTSPLESNHSFIPPPNTFGQAKAPPPKQDFTQGATKNTNQNSSAHPHLMDDTVNQSNIELKNVNRNN
 AVNQENSRSSSTEATNNNPANGTQNKPRQPRGAADACTTEKSNKSSLHPNRHGHSSSDPVYPCGICTNEV
 NDDQDAILCEASCQKWFHRICTGMTETAYGLLTAESAVWGCDTCMADKDVQLMRTRETFGPSAVGSDA

TRTRPLEQKLISEEDLAANDILDYKDDDDKV

Chromatograms: https://cdn.origene.com/chromatograms/mg4103_f09.zip

Restriction Sites: Sgfl-MluI

Cloning Scheme:

Cloning sites used for ORF Shuttling:



* The last codon before the Stop codon of the ORF

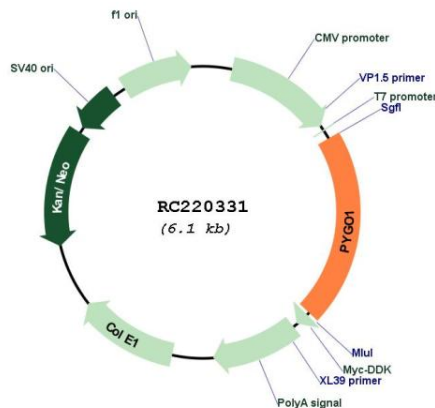
ACCN: NM_015617

ORF Size: 1257 bp

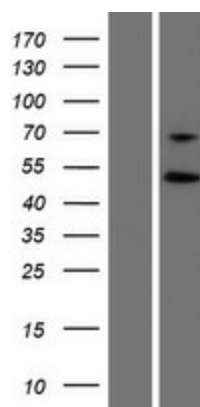
OTI Disclaimer: Due to the inherent nature of this plasmid, standard methods to replicate additional amounts of DNA in E. coli are highly likely to result in mutations and/or rearrangements. Therefore, OriGene does not guarantee the capability to replicate this plasmid DNA. Additional amounts of DNA can be purchased from OriGene with batch-specific, full-sequence verification at a reduced cost. Please contact our customer care team at custsupport@origene.com or by calling 301.340.3188 option 3 for pricing and delivery.

The molecular sequence of this clone aligns with the gene accession number as a point of reference only. However, individual transcript sequences of the same gene can differ through naturally occurring variations (e.g. polymorphisms), each with its own valid existence. This clone is substantially in agreement with the reference, but a complete review of all prevailing variants is recommended prior to use. [More info](#)

OTI Annotation:	This clone was engineered to express the complete ORF with an expression tag. Expression varies depending on the nature of the gene.
Components:	The ORF clone is ion-exchange column purified and shipped in a 2D barcoded Matrix tube containing 10ug of transfection-ready, dried plasmid DNA (reconstitute with 100 ul of water).
Reconstitution Method:	<ol style="list-style-type: none"> 1. Centrifuge at 5,000xg for 5min. 2. Carefully open the tube and add 100ul of sterile water to dissolve the DNA. 3. Close the tube and incubate for 10 minutes at room temperature. 4. Briefly vortex the tube and then do a quick spin (less than 5000xg) to concentrate the liquid at the bottom. 5. Store the suspended plasmid at -20°C. The DNA is stable for at least one year from date of shipping when stored at -20°C.
RefSeq:	<u>NM_015617.3</u>
RefSeq Size:	1260 bp
RefSeq ORF:	1260 bp
Locus ID:	26108
UniProt ID:	<u>Q9Y3Y4</u>
Cytogenetics:	15q21.3
Protein Families:	Druggable Genome
MW:	44.9 kDa
Gene Summary:	Involved in signal transduction through the Wnt pathway.[UniProtKB/Swiss-Prot Function]

Product images:


Circular map for RC220331



Western blot validation of overexpression lysate (Cat# [LY414458]) using anti-DDK antibody (Cat# [TA50011-100]). Left: Cell lysates from untransfected HEK293T cells; Right: Cell lysates from HEK293T cells transfected with RC220331 using transfection reagent MegaTran 2.0 (Cat# [TT210002]).