

Product datasheet for **RC220329**

AP1S3 (NM_001039569) Human Tagged ORF Clone

Product data:

Product Type: Expression Plasmids
Product Name: AP1S3 (NM_001039569) Human Tagged ORF Clone
Tag: Myc-DDK
Symbol: AP1S3
Synonyms: PSORS15; sigma1C
Mammalian Cell Selection: Neomycin
Vector: pCMV6-Entry (PS100001)
E. coli Selection: Kanamycin (25 ug/mL)
ORF Nucleotide Sequence: >RC220329 representing NM_001039569
Red=Cloning site Blue=ORF Green=Tags(s)

TTTTGTAATACGACTCACTATAGGGCGGCCGGAATTCGTCGACTGGATCCGGTACCGAGGAGATCTGCC
GCC**CGATCGCC**

ATGATACATTTTCATATTGCTCTTCAGTCGACAAGGAAATTACGGCTACAGAAATGGTACATCACTCTCC
CTGATAAAGAGAGGAAGAAGATCACCCGGAAATTGTTTCAGATTATTCTCTCCCGTGGTCACAGGACAAG
CAGTTTTGTTGACTGGAAGGAGCTAAAACCTGTTTATAAAAGGTATGCTAGTTTATATTTTTGCTGTGCA
ATAGAAAATCAGGACAATGAGCTCTTGACGCTAGAGATTGTGCATCGTTACGTGGAGCTGCTGGACAAT
ATTTTGAAATGTCTGTGAGCTGGATATTATCTTTAATTTGAAAAGGCTATTTTCATCCTGGACGAGTT
TATAATAGGTGGGAAATTCAGGAAACATCCAAGAAAATTGCTGTCAAAGCCATTGAAGACTCTGATATG
TTACAGGAGACAATGGAAGAATACATGAACAAGCCTACATTT

ACGCGTACGCGGCCGCTCGAGCAGAACTCATCTCAGAAGAGGATCTGGCAGCAAATGATATCCTGGATT
ACAAGGATGACGACGATAAGGTTTAA

Protein Sequence: >RC220329 representing NM_001039569
Red=Cloning site Green=Tags(s)

MIHFILLFSRQGLRLQKWYITLPDKERKKITREIVQIILSRGHRSSFVDWKLKLVYKRYASLYFCCA
IENQDNELLTLEIVHRYVELLDKYFGNVCELDIIFNFEKAYFILDEFIIGGEIQETSKKIAVKAIEDSDM
LQETMEEYMNKPTF

TRTRPLEQKLISEEDLAANDILDYKDDDDKV

Chromatograms: https://cdn.origene.com/chromatograms/mk8020_c01.zip



[View online »](#)

Restriction Sites: SgfI-MluI

Cloning Scheme:



ACCN: NM_001039569

ORF Size: 462 bp

OTI Disclaimer: The molecular sequence of this clone aligns with the gene accession number as a point of reference only. However, individual transcript sequences of the same gene can differ through naturally occurring variations (e.g. polymorphisms), each with its own valid existence. This clone is substantially in agreement with the reference, but a complete review of all prevailing variants is recommended prior to use. [More info](#)

OTI Annotation: This clone was engineered to express the complete ORF with an expression tag. Expression varies depending on the nature of the gene.

Components: The ORF clone is ion-exchange column purified and shipped in a 2D barcoded Matrix tube containing 10ug of transfection-ready, dried plasmid DNA (reconstitute with 100 ul of water).

Reconstitution Method:

1. Centrifuge at 5,000xg for 5min.
2. Carefully open the tube and add 100ul of sterile water to dissolve the DNA.
3. Close the tube and incubate for 10 minutes at room temperature.
4. Briefly vortex the tube and then do a quick spin (less than 5000xg) to concentrate the liquid at the bottom.
5. Store the suspended plasmid at -20°C. The DNA is stable for at least one year from date of shipping when stored at -20°C.

RefSeq: [NM_001039569.2](#)

RefSeq Size: 4005 bp

RefSeq ORF: 465 bp

Locus ID: 130340

UniProt ID: [Q96PC3](#)

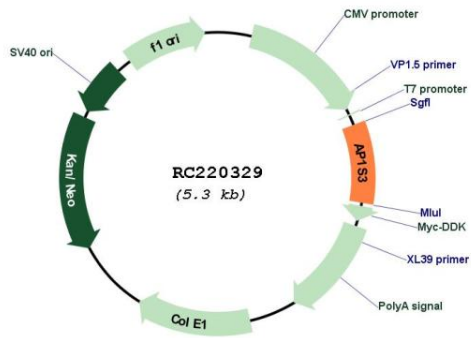
Cytogenetics: 2q36.1

Protein Pathways: Lysosome

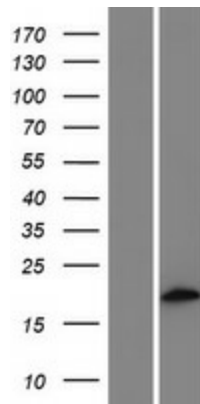
MW: 18.3 kDa

Gene Summary: This gene encodes a member of the adaptor-related protein complex 1, sigma subunit genes. The encoded protein is a component of adaptor protein complex 1 (AP-1), one of the AP complexes involved in clathrin-mediated vesicular transport from the Golgi or endosomes. Disruption of the pathway for display of HIV-1 antigens, which prevents recognition of the virus by cytotoxic T cells, has been shown to involve the AP-1 complex (PMID: 15569716). Alternative splicing results in multiple transcript variants. [provided by RefSeq, Mar 2014]

Product images:



Circular map for RC220329



Western blot validation of overexpression lysate (Cat# [LY422072]) using anti-DDK antibody (Cat# [TA50011-100]). Left: Cell lysates from untransfected HEK293T cells; Right: Cell lysates from HEK293T cells transfected with RC220329 using transfection reagent MegaTran 2.0 (Cat# [TT210002]).