

Product datasheet for **RC220328**

C10orf78 (SFR1) (NM_001002759) Human Tagged ORF Clone

Product data:

Product Type:	Expression Plasmids
Product Name:	C10orf78 (SFR1) (NM_001002759) Human Tagged ORF Clone
Tag:	Myc-DDK
Symbol:	C10orf78
Synonyms:	bA373N18.1; C10orf78; MEI5; MEIR5
Mammalian Cell Selection:	Neomycin
Vector:	pCMV6-Entry (PS100001)
E. coli Selection:	Kanamycin (25 ug/mL)
ORF Nucleotide Sequence:	>RC220328 representing NM_001002759 Red=Cloning site Blue=ORF Green=Tags(s)

TTTTGTAATACGACTCACTATAGGGCGGCCGGAATTCGTCGACTGGATCCGGTACCGAGGAGATCTGCC
GCC**CGATCGCC**

ATGGCGGACGCAGAGAAAAACCAAGATTTCACTTTCAAGATGGAAAGTCCGTCAGGCTCAGCTGTGGTTT
TACCTAGCACTCCTCAGGCCTCTGCGAATCCATCATCTCCCTATACAAATAGTCCCGAAAAACACCTAT
GAGTGCAACACTTAGAGAAAGATTAAGGAAAAACAAGATTTTCATTTAATTCCTCTTACAATGTGGTGAAA
CGTCTTAAAGTAGAGAGTGAAGAAAATGATCAGACCTTTTCAGAGAAACCAGCATCTCCACAGAGGAAA
ACTGTTTGAATTTCAAGAAAGTTTTAAACATATAGACAGTGAATTTGAAGAAAATACAAATTTGAAAAA
TACTTTGAAGAATCTCAATGTCTGTGAATCTCAGTCACCTGATTCTGGATCATGCAGTGCCTCCAAAAT
GAGTTTGTGAGTGAAGCTTCTAAACAAGATTAACGCTGAAAAAGCCAAATTTGGTGAAGCAGGTTT
AGGAGAAAGAAGACCTTCTCGGAGGCTAAAACAGTCAAAATGTATAGATCAAAGAATGATCTGTCTCA
GTTACAGTTGTTAATAAAGAAGTGGAGAAGCTGTAGCCAGCTCTTGCTTTATGAGTTGCAGTCAGCTGTG
TCTGAAGAGAACAAGAACTAAGCCTTACTCAATTGATAGACCACTATGGGTTAGATGATAAATTACTAC
ACTATAACAGAAGTGAAGAAGAATTTATAGATGTT

ACGCGTACGCGGCCGCTCGAGCAGAAACTCATCTCAGAAGAGGATCTGGCAGCAAATGATATCCTGGATT
ACAAGGATGACGACGATAAGGTTTAA



[View online »](#)

Protein Sequence: >RC220328 representing NM_001002759
Red=Cloning site Green=Tags(s)

MADAENQDFTFKMESPSGSAVLPSTPQASANPSSPYTNSSRKQPMATLRERLRKTRFSFNSSYNVVK
 RLKVESEENDQTFSEKPASSTEENCLFQESFKHIDSEFEENTNLKNTLKNLNVCESQSLDSGSCSALQN
 EYVSEKLPKQRLNAEKAKLVKQVQEKEDLLRRLKLVKMYRSKNDLSQLQLLIKKWRSCSQQLLLVELQSAV
 SEENKKLSLTQLIDHYGLDDKLLHYNRSEEFIDV

TRTRPLEQKLISEEDLAANDILDYKDDDDKV

Chromatograms: https://cdn.origene.com/chromatograms/mg3959_a09.zip

Restriction Sites: SgfI-MluI

Cloning Scheme:



ACCN: NM_001002759

ORF Size: 735 bp

OTI Disclaimer: The molecular sequence of this clone aligns with the gene accession number as a point of reference only. However, individual transcript sequences of the same gene can differ through naturally occurring variations (e.g. polymorphisms), each with its own valid existence. This clone is substantially in agreement with the reference, but a complete review of all prevailing variants is recommended prior to use. [More info](#)

OTI Annotation: This clone was engineered to express the complete ORF with an expression tag. Expression varies depending on the nature of the gene.

Components: The ORF clone is ion-exchange column purified and shipped in a 2D barcoded Matrix tube containing 10ug of transfection-ready, dried plasmid DNA (reconstitute with 100 ul of water).

Reconstitution Method:

1. Centrifuge at 5,000xg for 5min.
2. Carefully open the tube and add 100ul of sterile water to dissolve the DNA.
3. Close the tube and incubate for 10 minutes at room temperature.
4. Briefly vortex the tube and then do a quick spin (less than 5000xg) to concentrate the liquid at the bottom.
5. Store the suspended plasmid at -20°C. The DNA is stable for at least one year from date of shipping when stored at -20°C.

RefSeq: [NM_001002759.1](#), [NP_001002759.1](#)

RefSeq Size: 1447 bp

RefSeq ORF: 738 bp

Locus ID: 119392

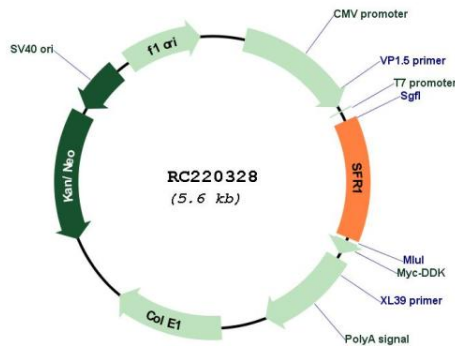
UniProt ID: [Q86XK3](#)

Cytogenetics: 10q25.1

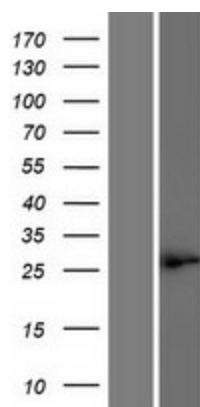
MW: 28.1 kDa

Gene Summary: Component of the SWI5-SFR1 complex, a complex required for double-strand break repair via homologous recombination (PubMed:21252223). Acts as a transcriptional modulator for ESR1 (PubMed:23874500).[UniProtKB/Swiss-Prot Function]

Product images:



Circular map for RC220328



Western blot validation of overexpression lysate (Cat# [LY424152]) using anti-DDK antibody (Cat# [TA50011-100]). Left: Cell lysates from untransfected HEK293T cells; Right: Cell lysates from HEK293T cells transfected with RC220328 using transfection reagent MegaTran 2.0 (Cat# [TT210002]).