

Product datasheet for **RC220324**

PARP8 (NM_024615) Human Tagged ORF Clone

Product data:

Product Type:	Expression Plasmids
Product Name:	PARP8 (NM_024615) Human Tagged ORF Clone
Tag:	Myc-DDK
Symbol:	PARP8
Synonyms:	ARTD16; pART16
Mammalian Cell Selection:	Neomycin
Vector:	pCMV6-Entry (PS100001)
E. coli Selection:	Kanamycin (25 ug/mL)



[View online »](#)

ORF Nucleotide
Sequence:

>RC220324 representing NM_024615
 Red=Cloning site Blue=ORF Green=Tags(s)

TTTTGTAATACGACTCACTATAGGGCGGCCGGGAATTCGTGACTGGATCCGGTACCGAGGAGATCTGCC
 GCC**CGGATCGCC**

ATGGGGATGTGTTCAAGCAAGAGCGAATTCAGAAGGATATCGACGTCGTGATCCAGAAGTCCAGAGCTG
 AGAAGGACTGCCTGTTTGCAGATTTAGATACTCTGACTCCACCTTTACTTTTACCTACGTTGGCGGCC
 CAGAAGTGTATCCTACTCAGTACATGTATCTGAAGATTACCCAGATAATACATATGTGTCAAGTTCAGAG
 AATGATGAAGATGTGCTAGTTACTACAGAGCCAATACCAGTAATTTTTCATAGAATAGCAACAGAATTAA
 GAAAAACAAATGACATTAAGTGTGCTTATCCATAAAAACCAAAATACAAAAGGAAAAATGGGAGGAATC
 AAGACAGAATAGTACAGTGGAGGAAGATTCTGAAGGTGACAATGATTCGAAGAATTTTATTACGGAGGG
 CAGGTGAAGTATGATGGGAACTGCACAAGCACCCACAAGTGAAGCTGATTTGTCAGCAGTTAGAGAGA
 TATATGGGCCACATGCAGTTTCTCTCAGGAATATGGAGCCATTGATGATGTAGATATTGATCTGCATAT
 CGATGTTAGCTTCTTGTGAGGAGATTGCTGTGGCTTGGGAAGTAATTCGAACAGAACCTATAATTGTT
 CGACTACACTGTTCACTTACACAGTATTTAAATGGCCAGTGCCCACTGTTGATGTCTTTAGATTTCCA
 CAAAAGAGCGATTTGGATTGGGACATCAGCTGAAAAAATCATGCAGACATTTGTTACACAGCAGTGGAA
 ACAGAGCAAAGAAAAATCCAATTGCCTGCACAATAAAAAGTTGTGAGAGAAGAAAGTGAAGTCTCCCTG
 CATTTATTTTCTACTTTGCGCAGGTCGCAAGTTATCCTCCCCCTGGTTGTGGCAAAAGCAAATCCAAAC
 TGAAATCTGAGCAGGACGGAATCTCAAACCGCATAAGCTGTGCGGAGGACTTGTTCAGCACAGTCAA
 GACTGATGATGTGTGTGTCAAAAGTCAACAGGACCTTTGGCCGCTCCTGTCCAGCGATCCCAGGGCG
 GAGCAGGCTATGACAGCAATTAATCGCACAACTTTGAACCGTCTTGCCTGCAGCTGTTAAGTCAG
 AGGAATGCCTAACTCAAAGTCGCATAGACTATTGACTCGATCTGTTTCTGGAGATCCACAGTGTGAGCA
 CAACACAAACTTGAAGCCCCATAAACTGTTAAGCAGGTCTTACTCTAGTAATCTCAGAATGGAAGAATTA
 TATGGACTGAAAAATCACAAATTGCTCAGCAAGTCTTACTCCAGTGCCCCCAAGTCATCCAAAAGTGAAGC
 TTTTCAAGGAACCTAACGCAGAGGGCAGGAGGCTCTCTTACCTCAGGGCTTATTGGTATCCTAACACC
 ATCTTCATCTTCTCAGCTTGTCTCAAATGGTGCAAAATGCATTCCAGTACGAGACCGTGGCTTC
 CTGGTGCAGACAATTGAGTTTGTGAACAGCGGATCCCTGTATTAATGAATATTGTGTGGTTTGTGATG
 AGCCACATGTGTTTCAAATGGCCCTATGCTTAGGCCTACCGTATGTGAACGGGAGCTGTGTGTGTTTGC
 TTTTCAAACCCTGGGAGTAATGAATGAAGCTGCTGATGAATAGCAACTGGAGCTCAGGTGGTAGATCTA
 CTAGTATCCATGTGTAGTCTGCGTTGGAATCTCTAGAAAAGTTGTGATTTTCGAGCCATATCCTTCTG
 TGGTAGATCCTAATGATCCTCAGATGTTGGCCTTCAACCCAGGAAAAAGAACTATGATCGAGTAATGAA
 AGCACTGGATAGCATAACTTCTATCAGAGAAATGACACAAGCACCATATCTGGAATCAAGAAGCAAATG
 GATAAACAGGACCCCTTGTCTATCCCTTACTGCAATGGGTTATATCAAGTAATAGATCACATATTGTGA
 AACTGCCAGTTAACAGGCAATTGAAGTTTATGCATACTCCACATCAGTTCCTTCTTCTCAGCAGTCCACC
 AGCCAAAGAAATCCAATTTTAGAGCTGCTAAAAACTCTTTGGAAGCACCTTTCATTTATGCTCACAC
 ATTGAAAAGTGGCACTCCATCCTGAGGAATGGTCTGGTTGTTGCTTCTAATACAGATTGCAGCTCCATG
 GTGCAATGTATGGAAGTGAATCTATCTTAGTCCAATGTCAAGCATATCATTGGTTACTCAGGGATGAA
 CAAGAAACAGAAGGTGTGAGCAAGGACGAGCAGCTTCAAGCAGTAAAAGCAGCAATACATCACAGTCA
 CAGAAAAAAGGACAGCAATCCCAATTCCTGCAAAGCCGTAACCTAAAATGCATAGCCTTATGTGAAGTGA
 TCACCTCATCTGACCTGCACAAACATGGAGAGATATGGGTTGTCCCAACTGACCATGTCTGCACACG
 ATTCTTTTTCGTCTATGAAGACGGCAAGTGGGAGATGCAAAATTAATACACAAGAAGGAGGCATTAC
 AAAGAGATCCTCCGAGTAATTGGTAATCAAAGTCTACTGGT

ACGCGTACGCGGCCGCTCGAGCAGAACTCATCTCAGAAGAGGATCTGGCAGCAATGATATCCTGGATT
 ACAAGGATGACGACGATAAGGTTTAA

Protein Sequence: >RC220324 representing NM_024615
 Red=Cloning site Green=Tags(s)

MGMCSRQERIQKDIDVVIQKSRAEKDCLFADFRYSDSTFTFTYVGGPRSVSVHVSSEDPDNTYVSSSE
 NDEDVLTTEPIPVIFHRIATELRKTNDINCLSIKSKLQKENGEESRQNSTVEEDSEGDNDSEEFYYGG
 QVNYDGELHKHPQLEADLSAVREIYGPHAVSLREYGAIDVDIDLHIDVSFLDEEIAVAWEVIRTEPIIV
 RLHCSLTQYLNQPVPTVDVFIQISTKERFGLGHQLKKIMQTFVTQQWKQSKKEKSNCLHNKLLSEKKVKSPL
 HLFSTLRRSPSYPPPGCGKSKSKLSEQDGI SKTHKLLRRTCSSTVKTDDVCVTKSHRTFGRSLSSDPRA
 EQAMTAIKSHKLLNRPCPAAVKSEECLTLKSHRLLTRSCSGDPRCEHNTNLKPHKLLSRYSNLRMEEL
 YGLKNHKLLSKSYSSAPKSSKTELFKEPNAEGRRLSLTSGLIGILTPSSSSSSQLAPNGAKCIPVRDRGF
 LVQTIIEFAEQRIQIPVLENEVCVVCDEPHVFQNGPMLRPTVCERELCVFAFQTLGVMNEAADEIATGAQVVDL
 LVSMCRSALESPRKVVIFEPYPSVVDPNPQMLAFNPRKKNYDRVMKALDSITSIREMTQAPYLEIKKQM
 DKQDPLAHPQLQWVSSNRSHIVKLPVNRQLKFMHTPHQFLLSSPPAKESNFRAAKKLFGSTFAFHGSH
 IENWHSILRNLVVASNTRLQLHGAMYGSGIYLSMSSISFGYSGMKNKQKVSADKDEPASSKSSNTSQS
 QKKGQSQFLQSRNLKCIALCEVITSSDLHKHGEIWWVPNTDHCVTRFFVYEDGQVGDANINTQEGGIIH
 KEILRVIGNQTATG

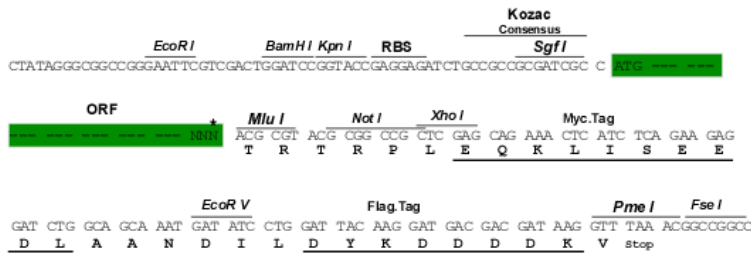
TRTRPLEQKLISEEDLAANDILDYKDDDDKV

Chromatograms: https://cdn.origene.com/chromatograms/mk8019_h03.zip

Restriction Sites: SgfI-MluI

Cloning Scheme:

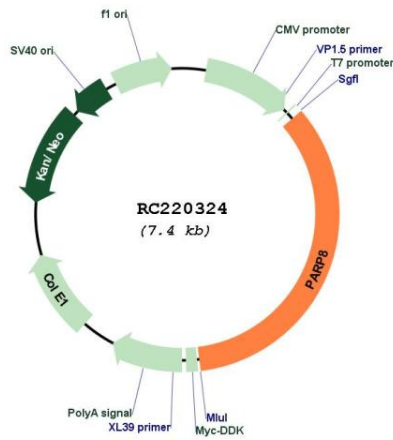
Cloning sites used for ORF Shuttling:



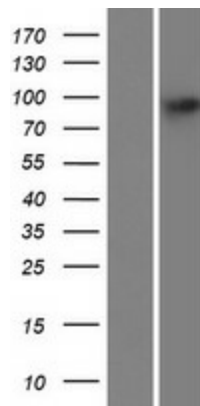
* The last codon before the Stop codon of the ORF

ACCN:	NM_024615
ORF Size:	2562 bp
OTI Disclaimer:	The molecular sequence of this clone aligns with the gene accession number as a point of reference only. However, individual transcript sequences of the same gene can differ through naturally occurring variations (e.g. polymorphisms), each with its own valid existence. This clone is substantially in agreement with the reference, but a complete review of all prevailing variants is recommended prior to use. More info
OTI Annotation:	This clone was engineered to express the complete ORF with an expression tag. Expression varies depending on the nature of the gene.
Components:	The ORF clone is ion-exchange column purified and shipped in a 2D barcoded Matrix tube containing 10ug of transfection-ready, dried plasmid DNA (reconstitute with 100 ul of water).
Reconstitution Method:	<ol style="list-style-type: none">1. Centrifuge at 5,000xg for 5min.2. Carefully open the tube and add 100ul of sterile water to dissolve the DNA.3. Close the tube and incubate for 10 minutes at room temperature.4. Briefly vortex the tube and then do a quick spin (less than 5000xg) to concentrate the liquid at the bottom.5. Store the suspended plasmid at -20°C. The DNA is stable for at least one year from date of shipping when stored at -20°C.
RefSeq:	NM_024615.4
RefSeq Size:	2974 bp
RefSeq ORF:	2565 bp
Locus ID:	79668
UniProt ID:	Q8N3A8
Cytogenetics:	5q11.1
MW:	95.7 kDa
Gene Summary:	Mono-ADP-ribosyltransferase that mediates mono-ADP-ribosylation of target proteins. [UniProtKB/Swiss-Prot Function]

Product images:



Circular map for RC220324



Western blot validation of overexpression lysate (Cat# [LY411204]) using anti-DDK antibody (Cat# [TA50011-100]). Left: Cell lysates from untransfected HEK293T cells; Right: Cell lysates from HEK293T cells transfected with RC220324 using transfection reagent MegaTran 2.0 (Cat# [TT210002]).