

## Product datasheet for RC220323

### C18orf1 (LDLRAD4) (NM\_004338) Human Tagged ORF Clone

#### Product data:

Product Type:	Expression Plasmids
Product Name:	C18orf1 (LDLRAD4) (NM_004338) Human Tagged ORF Clone
Tag:	Myc-DDK
Symbol:	C18orf1
Synonyms:	C18orf1
Mammalian Cell Selection:	Neomycin
Vector:	pCMV6-Entry (PS100001)
E. coli Selection:	Kanamycin (25 ug/mL)
ORF Nucleotide Sequence:	>RC220323 representing NM_004338 Red=Cloning site Blue=ORF Green=Tags(s)

TTTTGTAATACGACTCACTATAGGGCGCCGGAATTCGTCGACTGGATCCGGTACCGAGGAGATCTGCC  
GCC**CGATCGC**C

ATGGCAGCGGAGCTGGAGTTCGCCAAATCATCATCATCGTCGTGGTGGTCACGGTGATGGTGGTGGTCA  
TCGTCTGCCTGCTGAACCACTACAAAGTCTCCACGCGGTCCTTCATCAACCGCCGAACAGAGCCGGAG  
GCGGGAGGACGGGCTGCCGAGGAAGGGTGCCTGTGGCCTTCAGACAGCGCCGACCGCGGCTGGGCGCC  
TCGGAGATCATGCATGCCCGCGGTCCAGGGACAGGTTACAGCGCCGTCCTTCATCCAGAGGGATCGT  
TCAGCCGCTTCAGCCACCTACCCCTATGTGCAGCAGGATTGATCTTCTCCACCATCTCCCTGTC  
CGACGGTGAAGAGCCACCTCCTTACCAGGGCCCTGCACCTGCAGCTCCGGGACCCTGAACAGCAGATG  
GAACTCAACCGAGAGTCCGTGAGGGCCCCACCCAAACCGAACCATATTTGACAGTGATTTAATAGACATTG  
CTATGTATAGCGGGGTCCATGCCACCCAGCAGCAACTCGGGCATCAGTGCAAGCACCTGCAGCAGTAA  
CGGGAGGATGGAGGGGCCACCCCCACATACAGCGAGGTGATGGGCCACCCAGGCGCCTCTTTCCTC  
CATCACCAGCGCAGCAACGCACACAGGGGCGAGACTGCAGTTTCAGCAGAACAATGCAGAGAGCACAA  
TAGTACCCATCAAAGGCAAAGATAGGAAGCCTGGGAACCTGGTC

**ACGCGT**ACGCGGCCGCTCGAGCAGAACTCATCTCAGAAGAGGATCTGGCAGCAAATGATATCCTGGATT  
ACAAGGATGACGACGATAAGGTTTAA



[View online »](#)

**Protein Sequence:** >RC220323 representing NM\_004338  
Red=Cloning site Green=Tags(s)

```
MAAELEFAQIIIIIVVVVTVVVVIVCLLNHYKVSTRSFINRPNQSRREDGLPQEGCLWPSDSAAPRLGA
SEIMHAPRSRDRFTAPSFIQDRFSRFQPTYVYVQHEIDLPTTISLSDGEEPPPYQGCTLQLRDPEQQM
ELNRESVRAPPNRTIFDSLIDIAMYSGGPCPPSSNSGISASTCSSNGRMEGPPPTYSEVMGHHPGASFL
HHQRSNAHRGSRLLQFQQNNAESTIVPIKGDKDRKPGNLV
```

TRTRPLEQKLISEEDLAANDILDYKDDDDKV

**Restriction Sites:** SgfI-MluI

**Cloning Scheme:**

Cloning sites used for ORF Shuttling:



\* The last codon before the Stop codon of the ORF

**ACCN:** NM\_004338

**ORF Size:** 744 bp

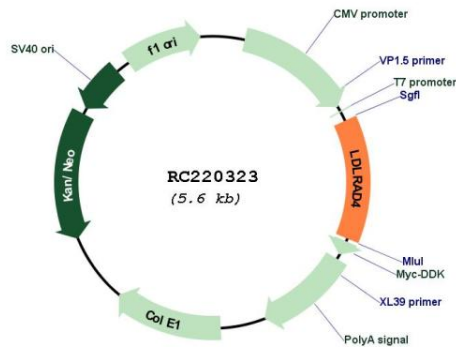
**OTI Disclaimer:** Due to the inherent nature of this plasmid, standard methods to replicate additional amounts of DNA in E. coli are highly likely to result in mutations and/or rearrangements. Therefore, OriGene does not guarantee the capability to replicate this plasmid DNA. Additional amounts of DNA can be purchased from OriGene with batch-specific, full-sequence verification at a reduced cost. Please contact our customer care team at [custsupport@origene.com](mailto:custsupport@origene.com) or by calling 301.340.3188 option 3 for pricing and delivery.

The molecular sequence of this clone aligns with the gene accession number as a point of reference only. However, individual transcript sequences of the same gene can differ through naturally occurring variations (e.g. polymorphisms), each with its own valid existence. This clone is substantially in agreement with the reference, but a complete review of all prevailing variants is recommended prior to use. [More info](#)

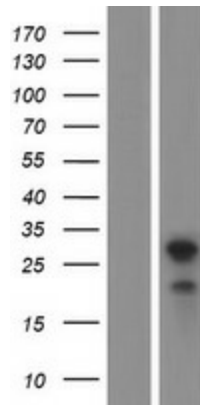
**OTI Annotation:** This clone was engineered to express the complete ORF with an expression tag. Expression varies depending on the nature of the gene.

<b>Components:</b>	The ORF clone is ion-exchange column purified and shipped in a 2D barcoded Matrix tube containing 10ug of transfection-ready, dried plasmid DNA (reconstitute with 100 ul of water).
<b>Reconstitution Method:</b>	<ol style="list-style-type: none"><li>1. Centrifuge at 5,000xg for 5min.</li><li>2. Carefully open the tube and add 100ul of sterile water to dissolve the DNA.</li><li>3. Close the tube and incubate for 10 minutes at room temperature.</li><li>4. Briefly vortex the tube and then do a quick spin (less than 5000xg) to concentrate the liquid at the bottom.</li><li>5. Store the suspended plasmid at -20°C. The DNA is stable for at least one year from date of shipping when stored at -20°C.</li></ol>
<b>RefSeq:</b>	<u><a href="#">NM_004338.3</a></u> , <u><a href="#">NP_004329.1</a></u>
<b>RefSeq Size:</b>	8086 bp
<b>RefSeq ORF:</b>	746 bp
<b>Locus ID:</b>	753
<b>Cytogenetics:</b>	18p11.21
<b>Protein Families:</b>	Druggable Genome, Transmembrane
<b>MW:</b>	27.6 kDa
<b>Gene Summary:</b>	Functions as a negative regulator of TGF-beta signaling and thereby probably plays a role in cell proliferation, differentiation, apoptosis, motility, extracellular matrix production and immunosuppression. In the canonical TGF-beta pathway, ZFYVE9/SARA recruits the intracellular signal transducer and transcriptional modulators SMAD2 and SMAD3 to the TGF-beta receptor. Phosphorylated by the receptor, SMAD2 and SMAD3 then form a heteromeric complex with SMAD4 that translocates to the nucleus to regulate transcription. Through interaction with SMAD2 and SMAD3, LDLRAD4 may compete with ZFYVE9 and SMAD4 and prevent propagation of the intracellular signal.[UniProtKB/Swiss-Prot Function]

Product images:



Circular map for RC220323



Western blot validation of overexpression lysate (Cat# [LY418054]) using anti-DDK antibody (Cat# [TA50011-100]). Left: Cell lysates from untransfected HEK293T cells; Right: Cell lysates from HEK293T cells transfected with RC220323 using transfection reagent MegaTran 2.0 (Cat# [TT210002]).