

Product datasheet for **RC220322**

CCK4 (PTK7) (NM_152881) Human Tagged ORF Clone

Product data:

Product Type:	Expression Plasmids
Product Name:	CCK4 (PTK7) (NM_152881) Human Tagged ORF Clone
Tag:	Myc-DDK
Symbol:	CCK4
Synonyms:	CCK-4; CCK4
Mammalian Cell Selection:	Neomycin
Vector:	pCMV6-Entry (PS100001)
E. coli Selection:	Kanamycin (25 ug/mL)



[View online »](#)

ORF Nucleotide Sequence:

>RC220322 representing NM_152881
 Red=Cloning site Blue=ORF Green=Tags(s)

TTTTGTAATACGACTCACTATAGGGCGGCCGGGAATTCGTCGACTGGATCCGGTACCGAGGAGATCTGCC
 GCC**CGGATCGCC**

ATGGGAGCTGCGCGGGGATCCCCGCCAGACCCCGCCGGTTGCCTCTGCTCAGCGTCTGCTGCTGCCG
 TGCTGGGCGGTACCCAGACAGCCATTGTCTTCATCAAGCAGCCGCTCCAGGATGCACTGCAGGGGCG
 CCGGGCGCTGTTTCGCTGTGAGGTTGAGGCTCCGGGCCCGGTACATGTGTACTGGCTGCTCGATGGGGCC
 CCTGTCCAGGACACGGAGCGGCTTTCCGCCAGGGCAGCAGCCTGAGCTTTGCAGCTGTGGACCGCTGC
 AGGACTCTGGCACCTTCCAGTGTGTGGCTCGGGATGATGTCACTGGAGAAGAAGCCCGAGTGCCAAACGC
 CTCCTTCAACATCAAATGGATTGAGGCAGGTCTGTGGTCTGAAGCATCCAGCCTCGGAAGCTGAGATC
 CAGCCACAGACCCAGGTCACTTCTGTGCCACATTGATGGGCACCCTCGGCCACCTACCAATGGTTCC
 GAGATGGGACCCCTTTCTGATGGTCAAGCAACACAGTCAAGCAGCAAGGAGCGGAACCTGACGCT
 CCGGCCAGCTGGTCTGAGCATAGTGGGCTGTATTCTGCTGCGCCACAGTGTCTTTGGCCAGGCTTGC
 AGCAGCCAGAACTTACCTTGTGATGATGAAAGCTTTGCCAGGGTGGTGTGGCACCCAGGACG
 TGGTAGTAGCGAGGTATGAGGAGGCCATGTTCCATTGCCAGTTCTCAGCCAGCCACCCCGAGCCTGCA
 GTGGCTCTTTGAGGATGAGACTCCCATCACTAACCAGCAGTCCGCCCCACACCTCCGAGAGCCACAGTG
 TTTGCCAACGGTCTCTGCTGCTGACCCAGGTCGGCCACGCAATGCAGGGATCTACCGTGCATTGGCC
 AGGGGCAGAGGGGCCACCCATCATCTGGAAGCCACACTTACCTAGCAGAGATTGAAGACATGCCGCT
 ATTTGAGCCACGGGTGTTTACAGCTGGCAGCGAGGAGCGTGTGACCTGCCTTCCCCCAAGGGTCTGCCA
 GAGCCCAGCGTGTGGTGGGAGCACGCGGGAGTCCGGCTGCCACCCATGGCAGGGTCTACCAGAAGGGCC
 ACGAGCTGGTGTGGCCAATATTGCTGAAAGTATGCTGGTGTCTACACCTGCCACGCGGCCAACCTGGC
 TGGTCAGCGGAGACAGGATGTCAACATCACTGTGGCCAATGGGAGCAGCCTCCAGAGTGGGTGACAGAC
 AACGCTGGGACCTGCATTTTGCCTGGGTGACTCGAGATGACGCTGGCAACTACACTTGCATTGCCTCCA
 ACGGGCCGAGGGCCAGATTTCGTGCCATGTCCAGCTCACTGTGGCAGTTTTTATCACCTTCAAAGTGGA
 ACCAGAGCGTACGACTGTGTACCAGGGCCACAGCCCTACTGCAGTGGCAGGGCCAGGGGGACCCCAAG
 CCGCTGATTCAAGTGGAAAGGCAAGGACCGCATCTGGACCCACCAAGCTGGGACCCAGGATGCACATCT
 TCCAGAATGGCTCCCTGGTATCCATGACGTGGCCCTGAGGACTCAGGCCGCTACACCTGCATTGCAGG
 CAACAGCTGCAACATCAAGCACAGGAGGCCCTCTATGTCGTGGACAAGCCTGTGCCGAGGAGTCCG
 GAGGGCCCTGGCAGCCCTCCCCCTACAAGATGATCCAGACCATTGGGTTGTGGTGGTGGCCTGTGG
 CCTACATCATTGCCGTGCTGGGCCCTCATGTTCTACTGCAAGAAGCGCTGCAAGCCAAGCGGCTGCAGAA
 GCAGCCCAGGGCGAGGAGCCAGAGATGGAATGCCTCAACGGTGGGCCTTTGCAGAACGGGACGCCCTCA
 GCAGAGATCCAAGAAGAAGTGGCCTTGACCAGCTTGGGCTCCGGCCCCGGGCCACCAACAACGCCACA
 GCACAAGTGATAAGATGCACTTCCCACGGTCTAGCCTGCAGCCCATCACCACGCTGGGGAAGAGTGAGTT
 TGGGGAGGTGTTCTGGCAAAGGCTCAGGGCTTGGAGGAGGAGTGGCAGAGACCCTGGTACTTGTGAAG
 AGCCTGCAGAGCAAGGATGAGCAGCAGCAGCTGGACTTCCGGAGGGAGTGGAGATGTTTGGGAAGCTGA
 ACCACGCCAACGTGGTGGGCTCCTGGGCTGTGCCGGGAGGCTGAGCCCCACTACATGGTGTGGAATA
 TGTGGATCTGGGAGACCTCAAGCAGTTCCTGAGGATTTCCAAGCAAGGATGAAAAATGAAGTACACAG
 CCCCTCAGCACCAGCAGAAGTGGCCCTATGCACCCAGGTAGCCCTGGGATGGAGCACCTGTCCAACA
 ACCGCTTTGTGCATAAGGACTTGGCTGCGGTAAGTGCCTGGTCAAGTGGCCAGAGACAAGTGAAGGTGTC
 TGCCCTGGGCTCAGCAAGGATGTGTACAACAGTGAAGTACTACCACTTCCGCCAGGCCTGGGTGCCGCTG
 CGCTGGATGTCCCCGAGGCCATCCTGGAGGGTGAATCTCTACCAAGTCTGATGTCTGGGCTTCCGGT
 TGCTGATGTGGGAAGTGTACACATGGAGAGATGCCCATGGTGGCAGGCAGATGATGAAGTACTGGC
 AGATTTGCAGGCTGGGAAGGCTAGACTTCTCAGCCCAGGGCTGCCCTTCCAACTCTATCGGCTGATG
 CAGCGCTGCTGGGCCCTCAGCCCAAGGACCGGCCCTCCTCAGTGAAGTGGCAGGCCCTGGGAGACA
 GCACCGTGGACAGCAAGCCG

ACGCGTACGCGGCCGCTCGAGCAGAACTCATCTCAGAAGAGGATCTGGCAGCAAATGATATCCTGGATT
 ACAAGGATGACGACGATAAGGTTTAA

Protein Sequence: >RC220322 representing NM_152881
 Red=Cloning site Green=Tags(s)

MGAARGSPARPRRLPLLSVLLLPLGGTQTAIVFIKQPSSQDALQGRALLRCEVEAPGPVHVYLLDGA
 PVQDTERRFAQSSLSFAAVDRLQDSGTFQCVARDDVTGEEARSANASFNKIEWIEAGPVVLLKHPASEAEI
 QPQTQVTLRCHIDGHPRTYQWFRDGTPLSDGQSNHTVSSKERNLTLRPAGPEHSGLYSCCAHSFQAC
 SSQNFLLSIADESFARVVLAPQDVVVARYEEMFHCQFSAQPPPSLQWLFEDETPITNRSRPPHLRRATV
 FANGSLLLTQVRPRNAGIYRCIGQGQRPPIILEATLHLAEIEDMPLFEPRVFTAGSEERVTCCLPPKGLP
 EPSVWWEHAGVRLPTHGRVYQKGHELVLANIAESDAGVYTCHAAANLAGQRRQDVNITVANGSSLEPWVTD
 NAGTLHFARVTRDDAGNYTCIASNGPQQQIRAHVQLTVAVFITFKVEPERTTVYQGHALLQCEAQGDPK
 PLIQWKGKDRILDPTKLGPRMHIFQNGSLVIHDVAPEDSGRYTCIAGNSCNKHTEAPLYVVDKPVPEES
 EGPSPPPYKMIQTIIGLSVGAAYIIVLGLMFYCKKRCKAKRLQKQPEGEEPEMECLNGGPLQNGQPS
 AEIQEEVALTSLGSGPAATNKRHSTSDKMHFPRSSLQPIITTLGKSEFGEVFLAKAQGLEEVAETLVLVK
 SLQSKDEQQQLDFRRELEMFGLNHANVVRLLGLCREAEPHYMVLEYVDLGDLLKQFLRISKSKDEKLKSKQ
 PLSTKQKVALCTQVALGMEHLSNNRFVHKDLAARNCLVSAQRQVKVSALGLSKDVYNSEYHFRQAVVPL
 RWSPEAILEGDFSTKSDVWAFGLMWEVFTHGEMPHGGQADDEVLADLQAGKARLPQPEGCP SKLYRLM
 QRCWALSPKDRPSFSEIASALGDSTVDSKP

TRTRPLEQKLISEEDLAANDILDYKDDDDKV

Chromatograms: https://cdn.origene.com/chromatograms/mk8012_f02.zip

Restriction Sites: SgfI-MluI

Cloning Scheme:

Cloning sites used for ORF Shuttling:



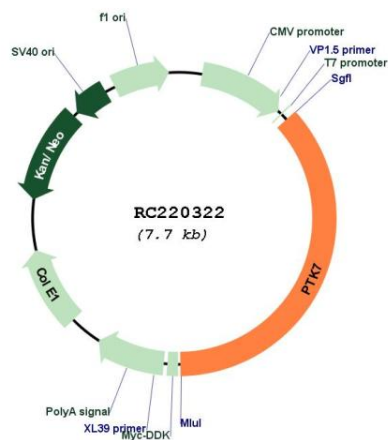
* The last codon before the Stop codon of the ORF

ACCN: NM_152881

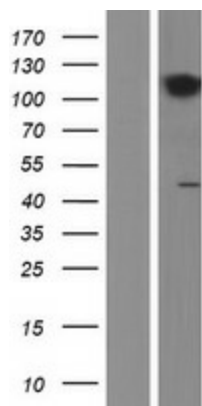
ORF Size: 2820 bp

OTI Disclaimer:	The molecular sequence of this clone aligns with the gene accession number as a point of reference only. However, individual transcript sequences of the same gene can differ through naturally occurring variations (e.g. polymorphisms), each with its own valid existence. This clone is substantially in agreement with the reference, but a complete review of all prevailing variants is recommended prior to use. More info
OTI Annotation:	This clone was engineered to express the complete ORF with an expression tag. Expression varies depending on the nature of the gene.
Components:	The ORF clone is ion-exchange column purified and shipped in a 2D barcoded Matrix tube containing 10ug of transfection-ready, dried plasmid DNA (reconstitute with 100 ul of water).
Reconstitution Method:	<ol style="list-style-type: none">1. Centrifuge at 5,000xg for 5min.2. Carefully open the tube and add 100ul of sterile water to dissolve the DNA.3. Close the tube and incubate for 10 minutes at room temperature.4. Briefly vortex the tube and then do a quick spin (less than 5000xg) to concentrate the liquid at the bottom.5. Store the suspended plasmid at -20°C. The DNA is stable for at least one year from date of shipping when stored at -20°C.
RefSeq:	NM_152881.4
RefSeq Size:	3859 bp
RefSeq ORF:	2823 bp
Locus ID:	5754
UniProt ID:	Q13308
Cytogenetics:	6p21.1
Protein Families:	Druggable Genome, Protein Kinase, Transmembrane
MW:	100.4 kDa
Gene Summary:	This gene encodes a member of the receptor protein tyrosine kinase family of proteins that transduce extracellular signals across the cell membrane. The encoded protein lacks detectable catalytic tyrosine kinase activity, is involved in the Wnt signaling pathway and plays a role in multiple cellular processes including polarity and adhesion. Alternatively spliced transcript variants encoding multiple isoforms have been observed for this gene. [provided by RefSeq, Jul 2012]

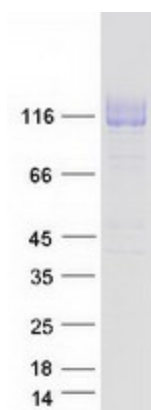
Product images:



Circular map for RC220322



Western blot validation of overexpression lysate (Cat# [LY407251]) using anti-DDK antibody (Cat# [TA50011-100]). Left: Cell lysates from untransfected HEK293T cells; Right: Cell lysates from HEK293T cells transfected with RC220322 using transfection reagent MegaTran 2.0 (Cat# [TT210002]).



Coomassie blue staining of purified PTK7 protein (Cat# [TP320322]). The protein was produced from HEK293T cells transfected with PTK7 cDNA clone (Cat# RC220322) using MegaTran 2.0 (Cat# [TT210002]).