

Product datasheet for RC220320

ADAMTS13 (NM_139025) Human Tagged ORF Clone

Product data:

Product Type:	Expression Plasmids
Product Name:	ADAMTS13 (NM_139025) Human Tagged ORF Clone
Tag:	Myc-DDK
Symbol:	ADAMTS13
Synonyms:	ADAM-TS13; ADAMTS-13; C9orf8; vWF-CP; VWFCP
Mammalian Cell Selection:	Neomycin
Vector:	pCMV6-Entry (PS100001)
E. coli Selection:	Kanamycin (25 ug/mL)
ORF Nucleotide Sequence:	>RC220320 representing NM_139025 Red=Cloning site Blue=ORF Green=Tags(s)

TTTTGTAATACGACTCACTATAGGGCGGCCGGAATTCGTCGACTGGATCCGGTACCGAGGAGATCTGCC
GCC**CGATCGCC**

ATGCACCAGCGTCACCCCGGGCAAGATGCCCTCCCCTCTGTGTGGCCGGAATCCTTGCCTGTGGCTTTC
TCCTGGGCTGCTGGGACCCTCCCATTTCCAGCAGAGTTGTCTTCAGGCTTTGGAGCCACAGGCCGTGTC
TTCTTACTTGAGCCCTGGTGTCTCCCTAAAAGGCCGCCCTCCTCCCCTGGCTTCCAGAGCAGAGGCAG
AGGCAGAGGCGGGCTGCAGGCGGCATCCTACACCTGGAGCTGCTGGTGGCCGTGGCCCCGATGTCTTCC
AGGCTCACAGGAGGACACAGAGCGCTATGTGCTCACCAACCTCAACATCGGGCAGAAGTCTTCGGGA
CCCGTCCCTGGGGCTCAGTTTCGGGTGCACCTGGTGAAGATGGTCATTCTGACAGAGCCTGAGGGTGC
CCAAATATCACAGCCAACCTCACCTCGTCCCTGCTGAGCGTCTGTGGGTGGAGCCAGACCATCAACCCTG
AGGACGACACGGATCCTGGCCATGCTGACCTGGTCCCTCTATATCACTAGGTTTGACCTGGAGTTGCCTGA
TGGTAACCGGCAGGTGCGGGGCGTCACCCAGCTGGGCGGTGCCTGCTCCCCAACCTGGAGCTGCCTCATT
ACCGAGGACACTGGCTTCGACCTGGGAGTACCATTGCCCATGAGATTGGGCACAGCTTCGGCCTGGAGC
ACGACGGCGGCCCGGCAGCGGCTGCGGCCAGCGGACAGTATGGCTTCGGACGGCGCCGCGCCCCG
CGCCGGCTCGCTGGTCCCCGTCAGCCGCGGCGAGCTGCTGAGCCTGCTCAGCGCAGGACGGCGCGC
TGCGTGTGGACCCCGCGGCTCAACCCGGTCCGCGGGCACCCCGGATGCGCAGCTGGCCTCT
ACTACAGGCCAACGAGCAGTGCCTGGCTTCGGCCCAAGGCTGTGCTGACCTTCGCCAGGGA
GCACCTGGATATGTGCCAGGCCCTCCTGCCACACAGACCCGCTGGACCAAAGCAGCTGCAGCCGCTC
CTCGTTCTCTCTGGATGGGACAGAATGTGGCGTGGAGAAGTGGTCTCCAAGGTCGCTGCCGCTCCC
TGGTGGAGCTGACCCCATAGCAGCAGTGCATGGGCGTGGTCTAGCTGGGGTCCCCGAAGTCTTGTCTC
CCGCTCTGCGGAGGAGGTGTGGTACCAGGAGGCGGAGTGAACAACCCAGACCTGCCTTTGGGGG
CGTGATGTGTTGGTGTGACCTCCAGGCCGAGATGTGCAACACTCAGGCTGCGAGAAGACCCAGCTGG
AGTTCATGTGCAACAGTGCAGGACGACGGCCAGCCGCTGCGCTCCTCCCCTGGCGGCGCTCCTT
CTACCACTGGGGTGTGCTGTACCACACAGCCAAGGGATGCTCTGTGCAGACACATGTGCCGGCCATT



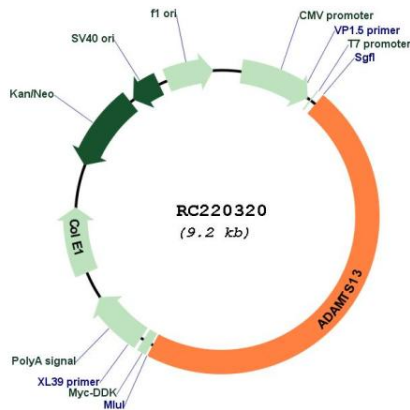
[View online >](#)

GCGGAGAGCTTCATCATGAAGCGTGGAGACAGCTTCCTCGATGGGACCCGGTGTATGCCAAGTGGCCCC
GGGAGGACGGGACCCTGAGCCTGTGTGTGTCGGGCAGCTGCAGGACATTTGGCTGTGATGGTAGGATGGA
CTCCCAGCAGGTATGGGACAGGTGCCAGGTGTGTGGTGGGACAACAGCACGTGCAGCCACGGAAGGGC
TCTTTCACAGCTGGCAGAGCGAGAGAATATGTCACATTTCTGACAGTTACCCCAACCTGACCAGTGTCT
ACATTGCCAACACAGGCCTCTCTTCACACACTGGCGGTGAGGATCGGAGGGCGCTATGTCGTGGCTGG
GAAGATGAGCATCTCCCCTAACACCACCTACCCCTCCCTCCTGGAGGATGGTCGTGTCGAGTACAGAGTG
GCCCTCACCGAGGACCGCTGCCCGCCTGGAGGAGATCCGCATCTGGGGACCCCTCCAGGAAGATGCTA
ACATCCAGGTTTACAGGCGGTATGGCGAGGAGTATGGCAACCTCACCCGCCAGACATCACCTTCACCTA
CTTCCAGCCTAAGCCACGGCAGGCTGGGTGTGGGCCGCTGTGCGTGGGCCCTGCTCGGTGAGCTGTGGG
GCAGGGCTGCGCTGGTAAACTACAGCTGCCTGGACCAGGCCAGGAAGGAGTTGGTGGAGACTGTCCAGT
GCCAAGGGAGCCAGCAGCCACCAGCTGGCCAGAGGCCTGCGTGTCTGAACCTGCCCTCCCTACTGGGC
GGTGGGAGACTTCGGCCATGCAGCGCCTCTGTGGGGCGGCCCTGCGGGAGCGGCCAGTGCCTGCGTG
GAGGCCAGGGCAGCCTCTGAAGACATTGCCCCAGCCCGTGCAGAGCAGGGGCCAGCAGCCAGCTG
TGGCGCTGAAACCTGCAACCCAGCCCTGCCCTGCCAGGTGGAGGTGTGAGAGCCAGCTCATGCAC
ATCAGCTGGTGGAGCAGGCTGGCTTGGAGAACGAGACCTGTGTGCCAGGGCAGATGGCTGGAGGCT
CCAGTGACTGAGGGGCTGGCTCCGTAGATGAGAAGCTGCCTGCCCTGAGCCCTGTGTCGGGATGTCAT
GTCTCCAGGCTGGGGCCATCTGGATGCCACCTCTGCAGGGGAGAAGGCTCCCTCCCATGGGGCAGCAT
CAGGACGGGGGCTCAAGCTGCACACGTGTGGACCCTGCGGCAGGGTCTGTCTCCGTCTCCTGCGGGCGA
GGTCTGATGGAGCTGCGTTTCTGTGCATGGACTCTGCCCTCAGGGTGCCTGTCCAGGAAGAGCTGTGTG
GCCTGGCAAGCAAGCCTGGGAGCCGGCGGGAGGTCTGCCAGGCTGTCCGTGCCCTGCTCGGTGGCAGTA
CAAGCTGGCGCCTGCAGCGTGAAGTGTGGGAGAGGGTCTGCGGAGGATCCTGTATTGTGCCCGGGCC
CATGGGAGGACGATGGTGAAGATCCTGTTGGACCCAGTGCAGGGGCTGCCTCGCCCGGAACCC
AGGAGCCCTGCAGCCTGGAGCCCTGCCACCTAGGTGGAAGTCATGTCCCTTGGCCCATGTTGGCCAG
CTGTGGCCTTGGCACTGCTAGACGCTCGGTGGCCTGTGTGCAGCTCGACCAAGGCCAGGACGTGGAGGTG
GACGAGGCGCCTGTGCGGCGCTGGTGCAGCCAGGCAAGTGTCCCTGTCTATTGCCGACTGCACCT
ACCGCTGGCATGTTGGCACCTGGATGGAGTGTCTGTTTCTGTGGGGATGGCATCCAGCGCCGGCGTGA
CACCTGCCTCGGACCCAGGCCAGGCGCTGTGCCAGCTGATTCTGCCAGCACTTGCCCAAGCCGGTG
ACTGTGCGTGGCTGTGGGCTGGGCCCTGTGTGGGACAGGGTACGCCAGCCTGGTGCCTCCAGGAGG
CCGCTGCTCCAGGACGGACCACAGCCACCCTGCTGGTGCCTCCCTGGAGTGGTCCAGGCCCCGGGGCT
GCTTTCTCCCGGCTCCCGAGCCTCGGCGCTCCTGCCCGGGCCAGGAAAACCTAGTGCAGTCCAGT
GCCTGTGGCAGGCAGCACCTTGAGCCAACAGGAACATTGACATGCGAGGCCAGGGCAGGCAGACTGTG
CAGTGGCCATTGGGCGGCCCTCGGGGAGGTGGTACCCTCCGCGTCTTGAGAGTTCTCTCAACTGCAG
TGGCGGGGACATGTTGCTGCTTTGGGGCCGGCTCACCTGGAGGAAGATGTGCAGGAAGCTGTTGGACATG
ACTTTCAGCTCCAAGACCAACACGCTGGTGGTGGGACAGCGCTGCGGGCGGCCAGGAGGTGGGGTGTCTG
TGCGGTATGGGAGCCAGCTTGTCTGAAACCTTCTACAGAGAATGTGACATGCAGCTCTTTGGGCCCTG
GGGTGAAATCGTGAGCCCTCGCTGAGTCCAGCCACGAGTAATGCAGGGGGCTGCCGGCTTTCATTAAT
GTGGCTCCGCACGCACGGATTGCCATCCATGCCCTGGCCACCAACATGGGCGCTGGGACCGAGGGAGCCA
ATGCCAGCTACATCTTGATCCGGGACACCCACAGCTTGAAGGACACAGCCTTCCATGGGCAGCAGGTGCT
CTACTGGGAGTCAGAGAGCAGCCAGGCTGAGATGGAGTTCAGCGAGGGCTTCTGAAGGCTCAGGCCAGC
CTGCGGGGCCAGTACTGGACCCTCAATCATGGGTACCGGAGATGCAGGACCCTCAGTCTGGAAGGGAA
AGGAAGGAACC

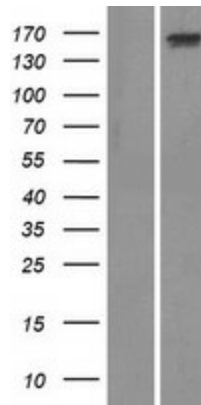
ACGCGTACGCGGCCGCTCGAGCAGAACTCATCTCAGAAGAGGATCTGGCAGCAATGATATCCTGGATT
ACAAGGATGACGACGATAAGGTTTAA

OTI Disclaimer:	The molecular sequence of this clone aligns with the gene accession number as a point of reference only. However, individual transcript sequences of the same gene can differ through naturally occurring variations (e.g. polymorphisms), each with its own valid existence. This clone is substantially in agreement with the reference, but a complete review of all prevailing variants is recommended prior to use. More info
OTI Annotation:	This clone was engineered to express the complete ORF with an expression tag. Expression varies depending on the nature of the gene.
Components:	The ORF clone is ion-exchange column purified and shipped in a 2D barcoded Matrix tube containing 10ug of transfection-ready, dried plasmid DNA (reconstitute with 100 ul of water).
Reconstitution Method:	<ol style="list-style-type: none">1. Centrifuge at 5,000xg for 5min.2. Carefully open the tube and add 100ul of sterile water to dissolve the DNA.3. Close the tube and incubate for 10 minutes at room temperature.4. Briefly vortex the tube and then do a quick spin (less than 5000xg) to concentrate the liquid at the bottom.5. Store the suspended plasmid at -20°C. The DNA is stable for at least one year from date of shipping when stored at -20°C.
RefSeq:	NM_139025.3
RefSeq Size:	4933 bp
RefSeq ORF:	4284 bp
Locus ID:	11093
UniProt ID:	Q76LX8
Cytogenetics:	9q34.2
Protein Families:	Secreted Protein, Transmembrane
MW:	149.9 kDa
Gene Summary:	This gene encodes a member of a family of proteins containing several distinct regions, including a metalloproteinase domain, a disintegrin-like domain, and a thrombospondin type 1 (TS) motif. The enzyme encoded by this gene specifically cleaves von Willebrand Factor (vWF). Defects in this gene are associated with thrombotic thrombocytopenic purpura. Alternative splicing results in multiple transcript variants. [provided by RefSeq, Jul 2013]

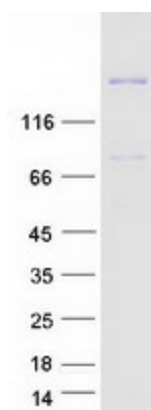
Product images:



Circular map for RC220320



Western blot validation of overexpression lysate (Cat# [LY408324]) using anti-DDK antibody (Cat# [TA50011-100]). Left: Cell lysates from untransfected HEK293T cells; Right: Cell lysates from HEK293T cells transfected with RC220320 using transfection reagent MegaTran 2.0 (Cat# [TT210002]).



Coomassie blue staining of purified ADAMTS13 protein (Cat# [TP320320]). The protein was produced from HEK293T cells transfected with ADAMTS13 cDNA clone (Cat# RC220320) using MegaTran 2.0 (Cat# [TT210002]).