

Product datasheet for RC220315

ETV3L (NM_001004341) Human Tagged ORF Clone

Product data:

Product Type:	Expression Plasmids
Product Name:	ETV3L (NM_001004341) Human Tagged ORF Clone
Tag:	Myc-DDK
Symbol:	ETV3L
Mammalian Cell Selection:	Neomycin
Vector:	pCMV6-Entry (PS100001)
E. coli Selection:	Kanamycin (25 ug/mL)
ORF Nucleotide Sequence:	>RC220315 representing NM_001004341 Red=Cloning site Blue=ORF Green=Tags(s)

TTTTGTAATACGACTCACTATAGGGCGGCCGGAATTCGTCGACTGGATCCGGTACCGAGGAGATCTGCC
GCC**CGATCGCC**

ATGCACTGCAGCTGCTTGGCTGAGGGCATCCCAGCCAACCCCGCAACTGGATCTCAGGGTTGGCCTTCC
CTGATTGGGCCTACAAGCCGAGTCGTCCCAGGCTCCCGGCAGATCCAGCTGTGGCACTTCATCTGGA
GCTGCTGCAGAAGGAAGATTCCGCCATGTCATCGCTGGCAGCAGGGAGAGTACGGGGAATTTGTCATC
AAGGATCCAGATGAGGTGGCCCGCTCTGGGGCCGAGGAAATGCAAACACAGATGAATTATGACAAGC
TGAGCCGGGCCCTCAGATATTACTACAATAAGAGGATCCTGCATAAGACCAAAGGCAAAGTTTACATA
CAAGTTCAACTTCAGCAAGCTCATCGTAGTCAACTATCCTTTGTGGGAAGTGGGGCGCCGCCATCCCC
CACTTGCTGCTGGGGCCCTGCCTGTGTGCGCCAGCGCTGGTGCCTGGGTGTGCAGAGTGAGCTCC
TGACAGCATGCTATTTGCCATCAGGCCATGGTGGAGCAGCTGACAGGACAGCAGACCCCCGAGGGCC
ACCAGAGACCTCTGGGATAAGAAGGGGAGCAGCAGCAGCGTCTACCGACTTGGCTCTGCCCCAGGCCCC
TGCCGGCTGGGCCTTTGCTGCCATTTGGGGAGCGTCCAAGGCGAGCTGCCTGGTGTGCTCCTTCACTC
CTCCCCTCCCGCCCCCTCTGCCCTCAACTGGACCTGTCTCTCGGGGCCCTTCTTGCTCCTCTCCCGTC
AGAGCAGCAGCTCCAGGGGCTTTAAGCCAGACATCCTGCTCCAGGACCTAGGAGCCTCCAGGGGCC
TGGCATTTTCCAGGGCTTCTCTTTGGCAGGGCTGGGACAGGGTGCGGGTGAGAGGCTTTGGCTCTTGT
CCCTCAGGCCCGAGGGGCTGGAAGTAAAGCCTGCTCCCATGATGGAGGCAAAGGGAGGCCTGGATCCCAG
GGAGGTCTTGTCCCAGAGACCCGAGACTCAAACCTGGGGAGGAAAGCCTTACTCCCCAATCTGGAG
AACCTCAAAGCAGTGTGGCCCTTGGATCCTCT

ACGCGTACGCGGCCGCTCGAGCAGAACTCATCTCAGAAGAGGATCTGGCAGCAAATGATATCCTGGATT
ACAAGGATGACGACGATAAGGTTTAA



[View online »](#)

Protein Sequence: >RC220315 representing NM_001004341
Red=Cloning site Green=Tags(s)

MHCSCLAEGIPANPGNWISGLAFPDWAYKAESSPGSRQIQLWHFILLELLQKEEFRHVIAWQQGEYGEFVI
 KDPDEVARLWGRRKCKPQMNYDKLSRALRYYYNKRILHKTKGKRFTYKFNF SKLIVVNYPLWEVRAPPSP
 HLLLGPALCRPALVPVGVQSELLHSM LFAHQAMVEQLTGQOTPRGPPETSGDKKGS SSSVYRLGSAPGP
 CRLGLCCHLGSVQGELPGVASFT PPLPPPLPSNWTCLSGPFLPPLPSEQQLPGAFKPDILLGPRSLPGA
 WHFPGLPLLGLGQGAGERLWLLSLRPEGLEVKPAPMMEAKGGLDPREVF CPETRRLKTGEESL TSPNLE
 NLKAVWPLDPP

TRTRPLEQKLISEEDLAANDILDYKDDDDKV

Chromatograms: https://cdn.origene.com/chromatograms/mk8020_b04.zip

Restriction Sites: Sgfl-MluI

Cloning Scheme:

Cloning sites used for ORF Shuttling:



* The last codon before the Stop codon of the ORF

ACCN: NM_001004341

ORF Size: 1083 bp

OTI Disclaimer: The molecular sequence of this clone aligns with the gene accession number as a point of reference only. However, individual transcript sequences of the same gene can differ through naturally occurring variations (e.g. polymorphisms), each with its own valid existence. This clone is substantially in agreement with the reference, but a complete review of all prevailing variants is recommended prior to use. [More info](#)

OTI Annotation: This clone was engineered to express the complete ORF with an expression tag. Expression varies depending on the nature of the gene.

Components: The ORF clone is ion-exchange column purified and shipped in a 2D barcoded Matrix tube containing 10ug of transfection-ready, dried plasmid DNA (reconstitute with 100 ul of water).

Reconstitution Method:

1. Centrifuge at 5,000xg for 5min.
2. Carefully open the tube and add 100ul of sterile water to dissolve the DNA.
3. Close the tube and incubate for 10 minutes at room temperature.
4. Briefly vortex the tube and then do a quick spin (less than 5000xg) to concentrate the liquid at the bottom.
5. Store the suspended plasmid at -20°C. The DNA is stable for at least one year from date of shipping when stored at -20°C.

RefSeq: [NM_001004341.2](#)

RefSeq Size: 1976 bp

RefSeq ORF: 1086 bp

Locus ID: 440695

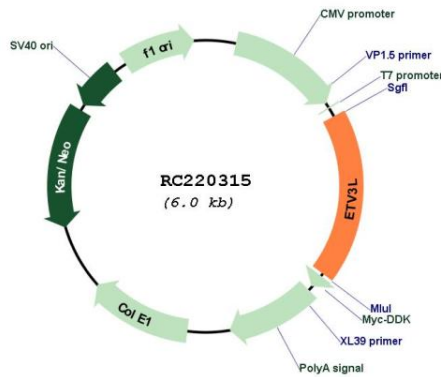
UniProt ID: [Q6ZN32](#)

Cytogenetics: 1q23.1

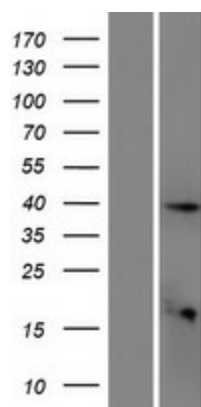
MW: 39.8 kDa

Gene Summary: Transcriptional regulator.[UniProtKB/Swiss-Prot Function]

Product images:



Circular map for RC220315



Western blot validation of overexpression lysate (Cat# [LY423735]) using anti-DDK antibody (Cat# [TA50011-100]). Left: Cell lysates from untransfected HEK293T cells; Right: Cell lysates from HEK293T cells transfected with RC220315 using transfection reagent MegaTran 2.0 (Cat# [TT210002]).