

Product datasheet for RC220309

PLA2G2F (NM_022819) Human Tagged ORF Clone

Product data:

| | |
|---------------------------|---|
| Product Type: | Expression Plasmids |
| Product Name: | PLA2G2F (NM_022819) Human Tagged ORF Clone |
| Tag: | Myc-DDK |
| Symbol: | PLA2G2F |
| Synonyms: | GIIFsPLA2; sPLA2-IIF |
| Mammalian Cell Selection: | Neomycin |
| Vector: | pCMV6-Entry (PS100001) |
| E. coli Selection: | Kanamycin (25 ug/mL) |
| ORF Nucleotide Sequence: | >RC220309 representing NM_022819 Red=Cloning site Blue=ORF Green=Tags(s) |

TTTTGTAATACGACTCACTATAGGGCGGCCGGAATTCGTCGACTGGATCCGGTACCGAGGAGATCTGCC
GCC**CGATCGCC**

ATGGCAGATGGGGCAAAGGCCAACCCCAAGGGTTCAAAAAGAAGGTGCTGGATAGATGCTTCTCTGGGT
GGAGGGGGCCACGCTTCGGGGCCCTCCTGTCTTCAAGAACCTCCAGGTCTAGCCTGGGTATGAAGAAGTT
CTTCACCGTGGCCATCCTTGCTGGCAGCGTTCTGTCCACAGCTCACGGCAGCCTGCTCAACCTGAAGGCC
ATGGTGGAGGCCGTACAGGGAGGAGCGCCATCCTGTCTTCGTGGGCTACGGTTGCTACTGTGGGCTGG
GGGGCCGTGGCCAGCCAAAGGATGAGGTGGACTGGTGTGCCACGCCACGACTGCTGCTACCAGGAACT
CTTTGACCAAGGCTGTACCCCTATGTGGACCACTATGATCACACCATCGAGAACAACACTGAGATAGTC
TGCACTGACCTCAACAAGACAGAGTGTGACAAGCAGACATGCATGTGTGACAAGAACATGTTTCTGTGCC
TCATGAACCAGACGTACCGAGAGGAGTACCGTGGCTTCTCAATGTCTACTGCCAGGGCCCCACGCCCAA
CTGCAGCATCTATGAACCGCCCCCTGAGGAGGTCACCTGCAGTCACCAATCCCCAGCGCCCCCGCCCT
CCC

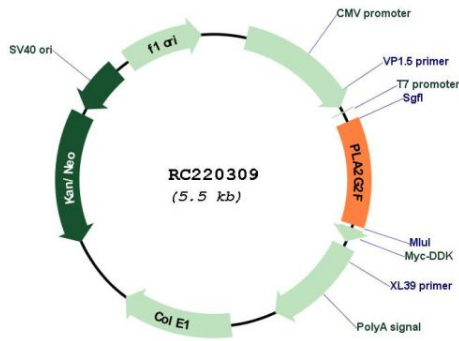
ACGCGTACGCGGGCCGCTCGAGCAGAACTCATCTCAGAAGAGGATCTGGCAGCAAATGATATCTGGATT
ACAAGGATGACGACGATAAGGTTTAA



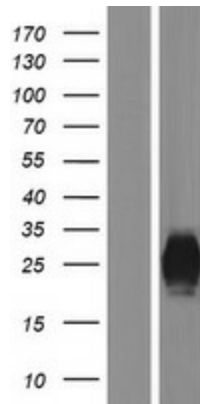
[View online »](#)

| | |
|-------------------------------|--|
| Reconstitution Method: | <ol style="list-style-type: none">1. Centrifuge at 5,000xg for 5min.2. Carefully open the tube and add 100ul of sterile water to dissolve the DNA.3. Close the tube and incubate for 10 minutes at room temperature.4. Briefly vortex the tube and then do a quick spin (less than 5000xg) to concentrate the liquid at the bottom.5. Store the suspended plasmid at -20°C. The DNA is stable for at least one year from date of shipping when stored at -20°C. |
| RefSeq: | NM_022819.4 |
| RefSeq Size: | 2737 bp |
| RefSeq ORF: | 636 bp |
| Locus ID: | 64600 |
| UniProt ID: | Q9BZM2 |
| Cytogenetics: | 1p36.12 |
| Protein Families: | Druggable Genome, Secreted Protein |
| Protein Pathways: | alpha-Linolenic acid metabolism, Arachidonic acid metabolism, Ether lipid metabolism, Fc epsilon RI signaling pathway, Glycerophospholipid metabolism, GnRH signaling pathway, Linoleic acid metabolism, Long-term depression, MAPK signaling pathway, Metabolic pathways, Vascular smooth muscle contraction, VEGF signaling pathway |
| MW: | 23.1 kDa |
| Gene Summary: | May play a role in lipid mediator production in inflammatory conditions, by providing arachidonic acid to downstream cyclooxygenases and lipoxygenases (By similarity). Phospholipase A2, which catalyzes the calcium-dependent hydrolysis of the 2-acyl groups in 3-sn-phosphoglycerides (PubMed:11112443). Hydrolyzes phosphatidylethanolamine more efficiently than phosphatidylcholine, with only a modest preference for arachidonic acid versus linoelic acid at the sn-2 position. Comparable activity toward 1-palmitoyl-2-oleoyl-phosphatidylserine vesicles to that toward 1-palmitoyl-2-oleoyl-phosphatidylglycerol (By similarity). Hydrolyzes phosphatidylglycerol versus phosphatidylcholine with a 15-fold preference (PubMed:11112443).[UniProtKB/Swiss-Prot Function] |

Product images:



Circular map for RC220309



Western blot validation of overexpression lysate (Cat# [LY411526]) using anti-DDK antibody (Cat# [TA50011-100]). Left: Cell lysates from untransfected HEK293T cells; Right: Cell lysates from HEK293T cells transfected with RC220309 using transfection reagent MegaTran 2.0 (Cat# [TT210002]).