

Product datasheet for **RC220306**

GCNF (NR6A1) (NM_033334) Human Tagged ORF Clone

Product data:

Product Type:	Expression Plasmids
Product Name:	GCNF (NR6A1) (NM_033334) Human Tagged ORF Clone
Tag:	Myc-DDK
Symbol:	GCNF
Synonyms:	CT150; GCNF; GCNF1; hGCNF; hRTR; NR61; RTR
Mammalian Cell Selection:	Neomycin
Vector:	pCMV6-Entry (PS100001)
E. coli Selection:	Kanamycin (25 ug/mL)



[View online »](#)

ORF Nucleotide Sequence:

>RC220306 representing NM_033334
 Red=Cloning site Blue=ORF Green=Tags(s)

TTTTGTAATACGACTCACTATAGGGCGGCCGGAATTCGTCGACTGGATCCGGTACCGAGGAGATCTGCC
 GCC**CGGATCGCC**

ATGGAGCGGGACGAACCGCCGCTAGCGGAGGGGAGGCGGGGGGCTCGGCGGGTTCCTGGAGCCTC
 CCGCCGCTACCTCCGCGCCGCGCAACGGTTTCTGTACAGGATGAATTGGCAGAGCTTGACCCAGGCAC
 TATTTCTGCAGATGATCGGGCTGAACAACGAACCTGTCTCATTTGTGGGACCGCTACAGGCTTGCAC
 TATGGGATCATCTCCTGTGAGGGCTGCAAAGGGTTTTTCAAGCGGAGCATTGCAACAAACGGGTATATC
 GATGCAGTCGTGACAAGAAGTGTGTATGTCTCGGAAGCAGAGGAACAGGTGCCAGTACTGCCGCTGCT
 CAAATGCCTCCAGATGGGGATGAACCGGAAGGCTATCAGAGAAGATGGCATGCCTGGAGGCCGAATAAG
 AGCATTGGGCCAGTCCAGATATCGGAAGAAGAAATCGAAAGGATCATGTCTGGGCAGGAGTTTGAGGAAG
 AGGCCAATCACTGGAGCAACCATGGTATAGTGACCACAGTCCCCTGGGAACAGGGCTTCGGAGAGCAA
 CCAGCCCTCACCAGGCTCCACACTGTCTCCAGGTCTGTGGAACGAATGGATTCATGGCCTTCAGGGAA
 CAGTACATGGGAATGTCTGTGCCTCCACATTACCAATATATACCGCACCTTTTTAGCTATTCTGGCCACT
 CACCACCTCTGCCCAACAAGCTCGCAGCTGGATCCCCAGTCATACAGTCTGATTACACAGCTGTTATC
 AGCCGAGGACCTGGAACCATGGGCACGCCATGTTGATTGAAGATGGATACGCTGTGACACAGGCAGAA
 CTATTTGCCCTGCTTTGCCGCTGGCCGACGAGCTGCTCTTAGGCAGATTGCCTGGATCAAGAACTGC
 CTTTCTTCTGCGAGCTCTCAATCAAGGATTACACGTGCCTCTTGAGCTCTACGTGGCAGGAGCTAATCCT
 GCTGTCTCCCTACCGTTTACAGCAAGCAGATCTTTGGGAACTGGCTGATGCTACTGCCAAGTACTCG
 CCCTCCGATGAAGAACTACACAGATTTAGTGATGAAGGGATGGAGGTGATCGAGCGGCTCATCTACCTCT
 ATCACAAGTCCATCAGCTAAAGGTCAGCAACGAGGAGTATGCTTGCATGAAAGCAATTAACCTCTAAA
 TCAAGATATCAGGGGCTGACCAGTGCCTCACAGCTGGAACAATTGAATAAACGATACTGGTACATTTGC
 CAGGATTTTACTGAATATAAATACACACATCAGCCGAACCGCTTTCCTGATCTCATGATGTGCTTACCTG
 AGATTCGATATATTGCAGGAAAGATGGTGAATGTGCCCTGGAGCAGCTGCCCTCTCTTAAGGTGGT
 GCTGCATTCTGCAAGACCAGTGTGGGCAAGGAA

ACGCGTACGCGGCCGCTCGAGCAGAAACTCATCTCAGAAGAGGATCTGGCAGCAATGATATCCTGGATT
 ACAAGGATGACGACGATAAGGTTTAA

Protein Sequence:

>RC220306 representing NM_033334
 Red=Cloning site Green=Tags(s)

MERDEPPPSGGGGGGSAGFLEPPAALPPPPRNGFCQDELAELDPGTISADDRAEQRTCLICGDRATGLH
 YGIISCEGCKGFFKRSICNKRVRCSRDKNVMSRKQRNRCQYCRLLKCLQMGMNRKAIREDMGPPGGRNK
 SIGPVQISEEEIERIMSGQEFEEENHWSNHGSDHSSPGNRAESNQSPGSTLSSRSVELNGFMAFRE
 QYMGMSVPPHYQYIPHLFSYSGHSPLLPQARSLDPQSYSLIHQLLSAEDLEPLGTPMLIEDGYAVTQAE
 LFALLCRLADELLFRQIAWIKKLPFFCELSIKDYTCLLSSTWQELILLSLTVYSKQIFGELADVTAKYS
 PSDEELHRFSDEGMEVIERLIYLYHKFHQLKVSNEEYACMKAINFLNQDIRGLTSASQLEQLNKRYWYIC
 QDFTEYKYTHQPNRFPDLMCLPEIRYIAGKMNVPLEQLPLLFKVVVLSCKTSVGKE

TRTRPLEQKLISEEDLAANDILDYKDDDDKV

Chromatograms:

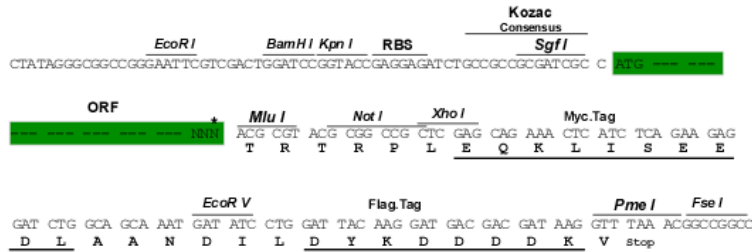
https://cdn.origene.com/chromatograms/mg4947_g02.zip

Restriction Sites:

Sgfl-MluI

Cloning Scheme:

Cloning sites used for ORF Shutting:



* The last codon before the Stop codon of the ORF

ACCN: NM_033334

ORF Size: 1814 bp

OTI Disclaimer: The molecular sequence of this clone aligns with the gene accession number as a point of reference only. However, individual transcript sequences of the same gene can differ through naturally occurring variations (e.g. polymorphisms), each with its own valid existence. This clone is substantially in agreement with the reference, but a complete review of all prevailing variants is recommended prior to use. [More info](#)
OTI Annotation: This clone was engineered to express the complete ORF with an expression tag. Expression varies depending on the nature of the gene.

Components: The ORF clone is ion-exchange column purified and shipped in a 2D barcoded Matrix tube containing 10ug of transfection-ready, dried plasmid DNA (reconstitute with 100 ul of water).

Reconstitution Method:

1. Centrifuge at 5,000xg for 5min.
2. Carefully open the tube and add 100ul of sterile water to dissolve the DNA.
3. Close the tube and incubate for 10 minutes at room temperature.
4. Briefly vortex the tube and then do a quick spin (less than 5000xg) to concentrate the liquid at the bottom.
5. Store the suspended plasmid at -20°C. The DNA is stable for at least one year from date of shipping when stored at -20°C.

RefSeq: [NM_033334.4](#)
RefSeq Size: 1918 bp

RefSeq ORF: 1443 bp

Locus ID: 2649

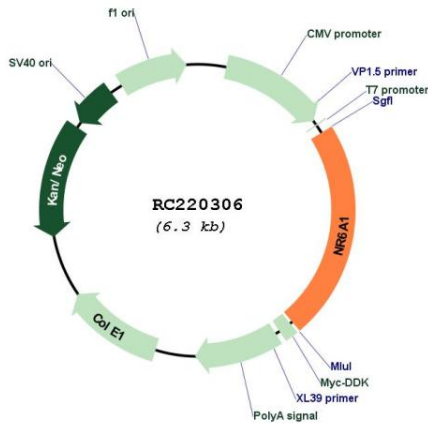
UniProt ID: [Q15406](#)
Cytogenetics: 9q33.3

Protein Families: Druggable Genome, ES Cell Differentiation/IPS, Transcription Factors

MW: 54.2 kDa

Gene Summary: This gene encodes an orphan nuclear receptor which is a member of the nuclear hormone receptor family. Its expression pattern suggests that it may be involved in neurogenesis and germ cell development. The protein can homodimerize and bind DNA, but in vivo targets have not been identified. Alternate splicing results in multiple transcript variants.[provided by RefSeq, Jun 2013]

Product images:



Circular map for RC220306