

Product datasheet for **RC220303**

PSD3 (NM_015310) Human Tagged ORF Clone

Product data:

Product Type:	Expression Plasmids
Product Name:	PSD3 (NM_015310) Human Tagged ORF Clone
Tag:	Myc-DDK
Symbol:	PSD3
Synonyms:	EFA6D; EFA6R; HCA67
Mammalian Cell Selection:	Neomycin
Vector:	pCMV6-Entry (PS100001)
E. coli Selection:	Kanamycin (25 ug/mL)
ORF Nucleotide Sequence:	>RC220303 representing NM_015310 Red=Cloning site Blue=ORF Green=Tags(s)

TTTTGTAATACGACTCACTATAGGGCGGCCGGAATTCGTCGACTGGATCCGGTACCGAGGAGATCTGCC
GCC**CGATCGCC**

ATGGAAGGAAGGAGCGCAGCGGCAGAGACATTTGTTGGGTGAACAATGCATCTGCACATCCCAGAGTG
TTGCCAAGGCCAAATATGAATTTTTATTTGGCAGATCTGAAGGGAAAGCTCCAGATACTAGTGATCATGG
AGGAAGCACTTTACTCCCACAAATGTCACAAATGAATTTCCAGAATATGGGACCATGGAGGAAGGTGGA
GAAGGCCAAGGGCTTCTCTGGAATTTGATGGTGAGGCTCTGCCATGCCACCCACAAGAGCAGCAGGGTG
TCCAGCCTCTTACTGGCTGCCACTCTGGGCTCGACAGTGTACAGAAGGACCAAAAGATGTCAGAGAGGC
CCCTCTCAAAGTCATCTCAAGGAACAAAGTTTACAGCCATTGACTCTTTGATTTGAGCTCTGAAAGCC
ACAGAAGCCAGAATCATTCCGGAACATTACAGGCTACAAGGTACTGGACCAAGATGCTGTTTTCTAGTT
TTTCAGTTCAGCAGGTGGAAAAAGAGCTGGACACTGCCAGTCGTAACACAGAGAGTCAACAAAACGCT
CCCTGTGGCCAAAAAATTTACCAGAAATACCTCTTTCAGCTGAAGTAACAACGGAGGAAAGTTTTTAT
TTGAGCATCCAGAAAGATCTCACCGCGCTGTTAACTGGAGACACTCAGGCAGAGATTTCCAGATAATGA
ATAATGGGAGGAAAGGGCTGTCTGTGTGCAGGAGCCATCTTGTCTTTGGCCTCCCTCGGGAGCTCAGC
AGTGACCTGCCACTCTGCAGGCAGTGTGGTTTTCTTAAAAGAGCAGAGGTCTGCTCTTGGGAGAGACAC
CCAGGGGATGTGATCGAAGCAGCTCCATGGGACGCCAGCCGCGGTCAAACATGTGGAATTTCAAGGAG
TGGAAACTGTGGACAGGAGGAGACAAGAGAGAGACCCAGCATCCTATAGATTTTGAGACATCACTGCA
AAGAACAGCCTCTCCTGACAGCAAGAGTCTTCCAAAGTGCCACGCCATCTCATCTCATCAGCTGGTTTG
TGTAATCAAGTAGTTTAACTGAGAATGTTGGGATGAATCCTGGAAAGCTCCTTCAGAGAGGCCTGGCA
CTAGCTCGGGACATTTCCCTGTGCGTCTTGATGAGAGTGGAGAGGATGAAGTCTTCTACAGGAAAA
CAAACAGCATCTTGAGAAGACACCTAAACCAGAGAGAGACAGGGAAAGGATCAGCGAACAAGAGGAGCAC
GTTAAGGGGAAGATGAAGACATCCTTGGGCTGGATATACGGAGGACTCCACCGACGTGTACAGCTCCC
AGTTTGAACCATTTTGGACAACACTTCTTTATACTACAGTGCAGAGTCCCTGGAGACATTATACTCAGA
GCCTGATAGCTATTTAGCTTTGAAATGCCCTCACTCCAATGATACAACAGCGCATTAAAGAAGGTGGT



[View online »](#)

CAGTTCCTGGAGAGGACATCAGGGGGAGGACATCAGGATATCCTGAGTGTGTCTGCAGATGGTGGCATCG
 TGATGGGCTATTCTAGTGGCGTACCAATGGGCTGAATGATGCCAGCGACTCCATCTACACGAAAGGCAC
 CCCGGAGATTGCTTTCTGGGGAAGCAATGCTGGGGTAAAAACAACACGGCTAGAAGCTCATTCTGAAATG
 GGGAGCACTGAAATTTGGAAAAGGAGACCCAGAAAACTCAGTAATGGTACCAGCAGCAATGTGGAAG
 CAGCCAAAAGGTTGGCCAAACGCCTTTATCAGCTGGACAGATTCAAAGATCAGATGTTGCAAAACACCT
 TGGCAAGAACAACGAATTTAGCAAACAGTTGCAGAAGAATATCTGAAGTTTTTGTATTTACAGGAATG
 ACGCTGGATCAGTCACTCAGGTATTTCTTTAAAGCATTCTCTTGTGGGAGAAAACCAAGAACGAGAGA
 GAGTTTTAATACACTTCTCCAATAGATATTTTATTGTAACCCAGATACCATTGCTTACAAGATGGAGT
 CCATTGCCTTACCTGTGAATAATGCTTCTTAATACCGATCTACATGGCCACAATATTGGAAGAAGATG
 ACCTGTGAGGAGTTCATTGCAAATCTGCAAGGGTAAATGAGGGTGTGATTTCTCCAAGGATCTGCTGA
 AAGCTCTGTACAACCAATCAAGAATGAGAAGCTTGAATGGGCAGTAGATGATGAAGAGAAAAAAGTC
 TCCCTCAGAAAGTACTGAGGAGAAAGCTAACGGAACACATCCAAAGACCATCAGTCGATTGGAAGTACT
 ACTAACCCATTTTGGACATTCTCATGATCCAAATGCTGCTGTGTACAAAAGTGGATTCTTGGCTCGGA
 AAATTCATGCAGATATGGATGGAAGAAGACTCCAAGAGGAAAACGAGGATGGAAAACCTTTTATGCTGT
 ACTGAAGGGAACAGTTCTTTACTTGCAAAAGGATGAATACAAGCCAGAAAAGGCCTTGTCTGAAGAGGAC
 TTGAAAAACGCTGTGAGTGTGCACCACGATTGGCATCCAAGGCCACGGACTATGAGAAGAAACCAAACG
 TGTTTAAACTTAAACTGCCGACTGGAGGGTCTTGTCTTTTCAAACCTCAGAGCCCAGAGGAAATGCAAGG
 GTGGATAAAACAAATCAATTGTGTGGCAGCTGATTTTCTGCACCACCATTTCCAGCAGCAATCGGCTCT
 CAGAAGAAGTTTAGCCGCCACTTCTGCCTGCCACTACAACAAAACCTGTCTCAGGAGGAGCAACTGAAGT
 CACATGAAAGTAAAGTGAAGCAGATCACCACCGAGCTGGCCGAGCACCCTCATATCCCCCGACAAGAA
 GGTCAAAGCCAAGGACGTCGATGAGTACAACTGAAAGACCCTATCTGGAGTTTGAGAAAACCCGCTAT
 GAAATGTATGTCAGCATTCTCAAGGAAGGAGGCAAGAGCTACTGAGTACGATGAAAGCGAGGCTGCAG
 GACTGAAGAAGTGCACCTCGAGTCTTCGCTGAACCCGGATACTTCTCCAATCACTGCCAAAGTCAAGCG
 TAACGTGTCAGAGAGGAAGGATCACCGACTGAAACACCAAGCATTAAAGCAAAAAGTTACT

ACGCGTACGCGGCCGCTCGAGCAGAAAACATCTCAGAAGAGGATCTGGCAGCAATGATATCCTGGATT
 ACAAGGATGACGACGATAAGGTTTAA

Protein Sequence:

>RC220303 representing NM_015310
 Red=Cloning site Green=Tags(s)

MEGRSAAAEFVWVNNASAHQSVAKAKYEFVLFGRSEGKAPDTS DHGGSTLLPPNVTNEFPYGTMEEGG
 EGLRASLEFDGEALPCHPQEQQGVQPLTGCHSGLDSVTEGPKDREAPSQSHLKEQSLQPIDSLISALKA
 TEARIISGTLQATKVLDDQDAVSSFSVQQVEKELDTASRKTQRVNKTL PAGQKNLPEIPLSAEVTTEESFY
 LSIQKDLTALLTGDTQAEISQIMNNGRKGAVCVQEPSCPLASLGSSAVTCHSAGSVGFLKEQRSALGREH
 PGGCDRSSMGRPGRVKHVEFQVEILWTGGDKRETQHPIDFETSLQRTASPDSKESKVPRLISSAGL
 CNSSSLTENVWDESWKAPSERPGTSSGTFSPVRLDESGEDEVFLQENKQHLEKTPKPERDRERISEQEEH
 VKGEDEDILGPGYTEDSTDVYSSQFETILDNTSLYYSAESLETLYSEPDYF SFEMPLTPMIQQRKEGG
 QFLERTSGGGHQDILSVSADGGIVMGYSSGVTNGLNDASDSIYTKGTPEIAFWGSNAGVKTTRLEAHSEM
 GSTEILEKETPENL SNGTSSNVEAAKRLAKRLYQLDRFKRSDVAKHLGKNNEF SKLVAEEYLKFFDFTGM
 TLDQSLRYFFKAFSLVGETQERERVL IHF SNRYFYCNPDTIASQDGVHCLTCAIMLLNTDLHGHNIGKMM
 TCQEFIANLQGVNEGVD FSKDLLKALYNSIKNEKLEWAVDDEEKKKSPSESTE EKANGTHPKTISRIGST
 TNPF LDIPHPNAAVYKSGFLARKIHADMDGKTPRGKRGWKT FYAVLKGTVLYLQKDEYKPEKALSEED
 LKNAVSVHHALASKATDYEKKNVFKLKTADWRVLLFQTQSPEEMQGWINKINCVAAVFSAPPFPAAIGS
 QKKFSRPLL PATTTKLSQEEQLKSHE SKLKQITTELAEHR SYPPDKVKAKDVDEYKLDHYLEFEKTRY
 EMYVSILKEGGKELL SNDESEAGLKKSHSSPSLNPDTSPITAKVKRNVSERKDRHPETPSIKQKVT

TRTRPLEQKLI SEEDLAANDILDYKDDDDKV

Chromatograms:

https://cdn.origene.com/chromatograms/mk8020_b02.zip

Restriction Sites:

Sgfl-Mlul

Cloning Scheme:


ACCN: NM_015310

ORF Size: 3141 bp

OTI Disclaimer: The molecular sequence of this clone aligns with the gene accession number as a point of reference only. However, individual transcript sequences of the same gene can differ through naturally occurring variations (e.g. polymorphisms), each with its own valid existence. This clone is substantially in agreement with the reference, but a complete review of all prevailing variants is recommended prior to use. [More info](#)

OTI Annotation: This clone was engineered to express the complete ORF with an expression tag. Expression varies depending on the nature of the gene.

Components: The ORF clone is ion-exchange column purified and shipped in a 2D barcoded Matrix tube containing 10ug of transfection-ready, dried plasmid DNA (reconstitute with 100 ul of water).

Reconstitution Method:

1. Centrifuge at 5,000xg for 5min.
2. Carefully open the tube and add 100ul of sterile water to dissolve the DNA.
3. Close the tube and incubate for 10 minutes at room temperature.
4. Briefly vortex the tube and then do a quick spin (less than 5000xg) to concentrate the liquid at the bottom.
5. Store the suspended plasmid at -20°C. The DNA is stable for at least one year from date of shipping when stored at -20°C.

RefSeq: [NM_015310.4](#)

RefSeq Size: 11687 bp

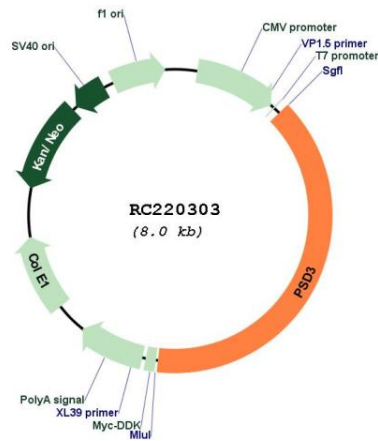
RefSeq ORF: 3144 bp

Locus ID: 23362

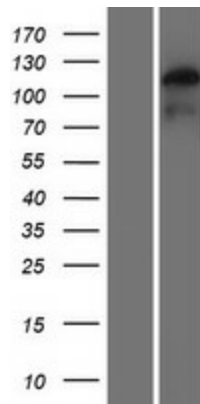
UniProt ID: [Q9NYY0](#)

Cytogenetics: 8p22
Domains: Sec7, PH
Protein Pathways: Endocytosis
MW: 115.8 kDa
Gene Summary: Guanine nucleotide exchange factor for ARF6.[UniProtKB/Swiss-Prot Function]

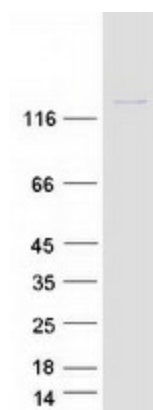
Product images:



Circular map for RC220303



Western blot validation of overexpression lysate (Cat# [LY414642]) using anti-DDK antibody (Cat# [TA50011-100]). Left: Cell lysates from untransfected HEK293T cells; Right: Cell lysates from HEK293T cells transfected with RC220303 using transfection reagent MegaTran 2.0 (Cat# [TT210002]).



Coomassie blue staining of purified PSD3 protein (Cat# [TP320303]). The protein was produced from HEK293T cells transfected with PSD3 cDNA clone (Cat# RC220303) using MegaTran 2.0 (Cat# [TT210002]).